



# JEFFRIES RED ANGUS

## ANNUAL BULL & FEMALE SALE

FRIDAY, SEPTEMBER 25TH 12:30PM CHECOTAH, OKLAHOMA

***90 Age-Advantaged Red Angus Bulls...***

***Powerful, Athletic and Ready to Work!***



# Legacy...

*a knowledge of the industry handed down from generations of  
experience in the Seedstock business!*

Dear Red Angus Enthusiasts & Cattlemen,

So the question has been brought to my attention... who, what, why and where is Legacy Genetics? Well here is an attempt to answer all these questions, knowing that Legacy Genetics is a new growing entity that will change and evolve with time.

**Who is Legacy Genetics?** In the spring of 2013, I sold one of the great young bulls in the Red Angus breed, C-Bar Eldorado, to a fellow breeder, Josh Dykes, Dykes Cattle Company. As long-time acquaintances, we had always enjoyed visiting about cattle and we shared similar views and a passion for the Red Angus breed. Those discussions culminated in the summer of 2014 to start a joint venture between him and I known as Legacy Genetics.

**What is Legacy Genetics?** More than just a company, Legacy Genetics is a way of life in the cattle business. I am fortunate enough to have grown up in one of the great livestock families in the world, and those experiences have given me a wealth of knowledge of this industry that has made me who I am today. Through my sales management business, I have also surrounded myself with clients that share my views and passion for this way of life... good, God loving, hard working families that live with their cattle and like to do their business with a handshake! They are the backbone and the members of Legacy Genetics.

**Why Legacy Genetics?** One of the major goals of this company is to better identify superior Red Angus genetics so we can provide a more reliable product to our customers. With the current members, we have well over a 1,000 head purebred Red Angus gene pool to test and prove young genetics, and we are also searching for large commercial test herds to evaluate our young sires. Through Legacy Genetics, our customers will have more options to market their calves and receive true values for their premium product.

**Where is Legacy Genetics?** Our members and partners are scattered across the country, from Washington, to Idaho, Montana, Minnesota, Kansas and Oklahoma. These members will maintain their current marketing programs, thus bringing the values and goals of Legacy Genetics right to your door step!

With that I am proud to be associated with Jerry Jeffries and his family here at Jeffries Red Angus. He is one of the most progressive breeders in the country and is committed to raising Red Angus genetics that work in the hot and humid Southeast portion of this country. You will find functional, sound, rugged age-advantaged bulls that are ready to go to work! He is also offering a beautiful set of open halter-broke heifers again this year. If you have any questions about the offering or Legacy Genetics please feel free to contact me, via my email (sal1968@msn.com) or by phone (406) 591-5651.

Sincerely,

Seth Leachman

**Josh Dykes**

**(509) 366-1968**

**joshdykes@legacydirect.com**

**Seth Leachman**

**(406) 591-5651**

**sal1968@msn.com**

**LEGACY  
GENETICS**



# JEFFRIES RED ANGUS



## ANNUAL BULL & FEMALE SALE

FRIDAY, SEPTEMBER 25<sup>TH</sup>, 2015 12:30 PM CHECOTAH, OKLAHOMA

### Schedule of Events:

**Thursday, September 24<sup>th</sup> –**

*Pre-sale viewing of cattle all day. Refreshments and snacks available.*

*6:00pm - Prime rib steak dinner served at the sale barn, followed by comments from RAAA Chief Executive Officer, Twig Marston!*

**Friday, September 25<sup>th</sup> –**

*11:30 pm – Lunch is served!*

*12:30 pm – Jeffries Annual Bull & Female Sale*

*Please join us after the sale for a ribeye steak diner at the sale barn!*

### Auctioneer:

**Colonel James M. Birdwell**  
Fletcher, Oklahoma  
(580) 549-6636

### Ranch Manager:

**Kirk Breed - (405) 830-5279**

### Herdsmen:

**J C Andras - (580) 399-9730**

### Special Sale Representatives:

**Chisholm Kinder – Oklahoma Cowman**  
(405) 235-4391

**Doug Paul – The Stock Exchange**  
(405) 820-3982

**Mark Sims - High Plains Journal**  
(580) 795-0901

**Phil Stoll - The Weekly Livestock Reporter**  
(817) 366-7332

**Delvin Heldermon - Special Agent**  
(580) 622-4016

**JW Brune - Midwest Marketer**  
(785) 865-6624

**Pete Crow - Western Livestock Journal**  
(303) 810-8831

**Bill Schermer - Midwest Beef Producer**  
(641) 425-2541

### Sale Day Phones:

**Sale Barn Office – (918) 473-0335**

**Jerry Jeffries – (918) 638-3317**

**Tricia Jeffries - (918) 638-3042**

**Kirk Breed – (405) 830-5279**

**Seth Leachman – (406) 591-5651**

**J C Andras - (580) 399-9730**

### Lodging:

**Stay Inn Eufaula – Checotah, OK**

**(918) 689-3999 Hwy 150 & Hwy 69**

**Best Western Eufaula Inn - Eufaula, OK**  
**(918) 689-5553**

**Americas Best Value Inn – Checotah, OK**  
**(918) 473-2381 Hwy 266 & Hwy 69**

### Delivery/Trucking:

Free delivery for purchases over 5 head. All other deliveries at \$150/head or less. All commercial heifers delivered at buyer's expense.

### Breed Representatives:

**Twig Marston – RAAA Chief Executive Officer**  
**(940) 387-3502**

Sale Managed by

**Seth Leachman**

**LEGACY GENETICS**

Bid online at:

**DVAuction**  
Broadcasting Real-Time Auctions

**CONTACTO EN MEXICO**

**(406) 591-5651 sal1968@msn.com**

**BILLY ESTRADA CEL: 618-815-1495**

**NEXTEL: 72\*14\* 44493**

**WWW.JEFFRIESCATTLE.COM**

**JERRY & TRICIA JEFFRIES**  
**CHECOTAH OKLAHOMA 74426**

**918-638-3317**

## JEFFRIES RED ANGUS- ARTICLE FROM AMERICAN CATTLEMEN

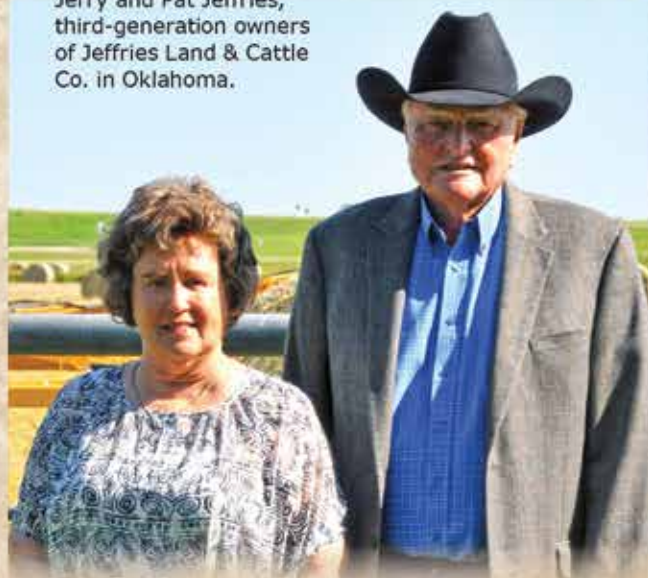
*This article is featured in the 2015 Cattle Auction Guide of the American Cattlemen magazine.*

**W**hen it comes to breeding and raising cattle, it all comes down to one key: choice of breed and quality. One of the premiere cattle breeds in the world is the Red Angus. One of the most respected breeders in the industry is Jerry L. Jeffries, who along with his wife Patricia, owns Jeffries Land & Cattle Co., ([www.jeffriescattle.com](http://www.jeffriescattle.com)) located near Checotah, Oklahoma. With a breeding program based on Red Angus quality and the needs of the industry, Jeffries Land & Cattle Co. has built a clientele of satisfied customers, large and small, commercial or registered cattlemen.

Jeffries takes great pride in the heritage of the land on which Jeffries Land & Cattle is located. "I grew up right here where I live today." Originally purchased by his grandfather, Jeffries has grown and expanded the original property and says members of the fifth and sixth generation also live on the ranch. Even though he could take the time to slow down, Jeffries has no intentions of retiring and currently raises 370 head of Red Angus on the ranch. "I'm just having too much fun. I like to meet and work with people."

In discussing his Red Angus cattle, Jeffries believes it is important to always be looking to improve the genetics of his cattle. "As genetics evolve and types may change, we will continue to place our emphasis on the beef-industry traits that have carried us to our success — fertility, soundness, conformation, muscle, and style. We believe in the Red Angus breed and its place in the global beef industry, and work hard to make sure our cattle meet the criteria and characteristics that help feed the world. We

Jerry and Pat Jeffries, third-generation owners of Jeffries Land & Cattle Co. in Oklahoma.



have a strict culling process to maintain the high standard of cows that produce the type of bull that we are proud to sell. This is required to satisfy the needs of every step in the production chain."

Jeffries continues, "We're always looking for the freshest genetics out there." Jeffries is a member of the newly formed Legacy Genetics, a group working together to improve genetics with the goal of making Red Angus one of the most valued breeds on the market.

### KEEPING ON THE CUTTING EDGE

One of the keys to the success of Jeffries Land & Cattle Co. has been the ability to make changes as the market changes. "We put a high emphasis on phenotype and structural soundness in the Jeffries Land & Cattle Co. breeding programs. As the focus of the industry has shifted to added value from carcass genetics, the Jeffries Land & Cattle Co. herd sires have set the standard for the industry with young sires set to push the bar even higher. Through the years, our sales have been private treaty sales negotiated at the ranch and in the last five years our annual Bull and Female Sale."

According to Jeffries, several employees have been instrumental in the growth and overall success of Jeffries Land & Cattle Co. Kirk Breed has been Operations Manager for over 25 years, J. C. Andras has been herdsman for over four years and for the past six years Jeff Taylor has been overseer of all of the part time help and FFA members that come to work at the ranch. "Without these guys, our operation wouldn't be where it is today. They are hard workers and take pride in what we do here."





### THE ANNUAL AUCTION

Jeffries Land & Cattle Co., is the source for Red Angus seedstock and commercial genetics in the Southeast. Highlight of the year comes the last Friday in September, when Jeffries Land & Cattle Co., holds its annual Bull and Female Sale. This year's sale takes place on Friday, September 25, 2015 with 100 of the finest Red Angus bulls and 50 of the finest Red Angus females to be auctioned off. At the same time, 10-12 Red Angus show heifers will be sold. "Kids that have bought one of our heifers have done very well. We like to say, 'we grow 'em; you show 'em!'"

"This will be our fifth annual Bull and Female Sale." According to Jeffries, the sale continues to grow each year. "We sell bulls all over the United States and Mexico, and our females have been purchased by producers across the country and in Canada. We start off on Thursday evening with several ag-related speakers and a prime rib dinner. Then on Friday, we grill up burgers and all the fixings for lunch with the auction starting promptly at 12:30 p.m."

In addition to the annual sale, Jeffries also offers private sales for producers who want to come to the ranch and pick out their bulls or heifers. "We have cattle that are not quite ready for the September sale, so when they are ready, we then sell them privately."

Jeffries is quick to point out the pride that he has for the region of Oklahoma where he resides, and believes in giving back. "We support the local FFA chapters any way that we can. They can arrange visits to the ranch and use our cattle to work with their judging teams. We also do the same for the local colleges. We have also hosted the Oklahoma Cattleman's Association." For Jeffries, it is truly about giving back! ♦



## LIVING A GOLDEN LIFE

In addition to their passion for ranching and Red Angus cattle, Jeffries and his wife also have other interests. "My wife has owned the Checotah Flower and Gift Shop nearby Checotah for nearly 25 years." Jerry, meanwhile, has over 40 years of experience in surveying, mapping, inspection of pipelines, right-of-way and construction management throughout the United States.

Jeffries founded Jeffries & Associates, Inc. in 1976 headquartered in Tulsa, Oklahoma with nationwide operations to the pipeline, gas transmissions, and telecommunications fields. He later sold Jeffries & Associates in 1984 and continued employment as President until leaving in 1994.

Jeffries founded Golden Field Services, Inc. (jjeffries@golden-fieldservices.com) in 1997 endeavoring to organize and furnish to the pipeline, power, and telecommunications industries coordinated survey, mapping, inspection, rights-of-way, and construction management services. Jeffries has worked with and identified the most qualified resources in terms of capabilities, experience, safety, quality standards, specifications and permit compliance.

Once again, it's about the people. "I like meeting and working with people." Jeffries will do all of the preliminary work to get bids accepted and then turn the next steps over to his project managers. According to Jeffries, success is based on the quality people working at Golden Field Services. "I have people who have been working with me since the 1970s!

Yes, owning a ranch, selectively breeding Red Angus cattle and running Golden Field Services take a lot of time, and although he could retire, Jeffries is quick to say, "I'm having too much fun to quit!"

Jeffries family members from all generations help to run the ranch.



# JEFFRIES RED ANGUS - THE CREW

*The people behind the scenes that make the difference!*



*Jeff Taylor*



*Kirk Breed... Ranch Manager*



*Not pictured:  
Deryk Bollinger  
Whitney Andras*



*Mike Breed*



*Zach Mcartney*



*JC Andras... Herdsman*



*Join us  
Thursday night  
with live entertainment  
from Quin Peterson*

*Look for the  
orange boot!*



## *Directions to our new sale facility...*

From Muskogee, take 69S to Hwy 266 exit, go 3.3 miles west on Hwy 266.

From Eufala, take 69N to Hwy 266 exit, go 3.3 miles west on Hwy 266.

From Oklahoma City, take 40E to Exit 262, go 2 miles north on Lotawatah Rd.

From Ft Smith, take 40W to Exit 262, go 2 miles north on Lotawatah Rd.

**This sale will be broadcast live on the internet.**

# **DVAuction**

**Broadcasting Real-Time Auctions**

**Real time bidding & proxy bidding available.**

*For information on the offering contact  
Chad Gordon, our DVAuction representative  
(580) 678-1918*



**Watch & Bid online for FREE!**

**Can't make the sale?**

*Let DVAuction bring the sale to you!*

**Busy during the sale?**

*Let DVAuction represent your bid!*

**Visit [www.dvauction.com](http://www.dvauction.com) and Register!**

**It's as easy as 1, 2, 3...**

1. Create an account at [www.dvauction.com](http://www.dvauction.com) under the "create new account" tab
2. Apply for bidding by clicking "apply for bidding" in the upper left corner of your screen, at least 24 hours prior to the auction
3. Tune into the sale and make your purchases!

**For General Questions Please Contact Our Office:  
(402) 316-5460 or [support@dvauction.com](mailto:support@dvauction.com)**

*\*High Speed Internet Access Required*



### BIEBER ROLLIN DEEP Y118

02/10/11 1A 100.0% RAB/Y118 #1436844

BIEBER ROUGH RIDER 10712

**BIEBER ROOSEVELT W384**

BIEBER SHEBA 9602

BIEBER BOONE 8000

**BIEBER TILLY 399W**

BIEBER TILLY 303S

#### RAAA EPDs

HB	GM	CED	BW	WW	YW	MILK	ME	HPG	CEM	STAY	MB	REA
91	53	5	-0.7	77	127	30	-1	10	3	8	0.75	0.56

*Rollin Deep was one of the top bulls to come out of Bieber's '12 sale, where he sold to Silver Spur Ranches in CO. His progeny have been well recieved, and have earned him one of the most balanced EPD profiles in the breed. Reference AI sire only.*



### VGW OLY 903

01/27/09 1A 100.0% VGW/903 #1322060

RED CROWFOOT OLE'S OSCAR

**RED SSS OLY 554T**

RED SSS GOLD EDGE 77R

VGW TRADEMARK 4101

**VGW TM-DORA 0758**

VGW PT- DORY 0361

**\$25  
per  
unit**

#### RAAA EPDs

HB	GM	CED	BW	WW	YW	MILK	ME	HPG	CEM	STAY	MB	REA
116	55	1	-6.7	57	113	18	5	9	7	10	0.44	0.28

*Oly 903 is an exciting young sire with a huge birth to yearling spread. His sire is one of the most talked about proven calving ease bulls in the breed today. SEMEN AVAILABLE.  
Co-owned with Bieber Red Angus, Leola, SD.*



### BIEBER H HUGHES W109

01/23/09 1A 100.0% RAB/W109 #1311331

BASIN HOBO 79E

**BASIN HOBO 0545**

BASIN ERICA 330E

RED BRYLOR NEW TREND 22

**BASIN ROSE 06T0**

BASIN ROSE F521

**\$40  
per  
unit**

#### RAAA EPDs

HB	GM	CED	BW	WW	YW	MILK	ME	HPG	CEM	STAY	MB	REA
188	50	2	-2.1	79	108	14	-3	15	3	20	0.56	0.22

*H Hughes 109W is one of the most balanced young bulls in the breed today. His calves appear to be full of growth and carcass traits. LIMITED SEMEN AVAILABLE.  
Co-owned with Bieber Red Angus in Leola, SD.*



## RED LONE STONE PURSUIT 81W

02/02/09 1A 100.0% 81W #1528643

PERKS ADVANCE 121R

**RED CINDER PURSUIT 101S**

RED HOWE MS HEATHER DDH 101G

RED DIMLER INDEED 441P

**RED LONE STONE MISS INDEED 6**

RED MYALTA 104H PETULA 26P

### RAAA EPDs

HB	GM	CED	BW	WW	YW	MILK	ME	HPG	CEM	STAY	MB	REA
96	47	1	3.0	89	123	-4	-15	6	7	7	0.03	0.44

**\$25  
per  
unit**

*Pursuit is a very exciting young outcross Canadian sire with extra muscle and style.  
US SEMEN AVAILABLE. Co-owned with Silver Spur Ranches, Encampment, WY.*

## BASIN EXT 8926

02/18/08 1A 100.0% DES/8926 #1236734

BASIN EXT 1925

**BASIN EXT 5233**

BASIN PRIMROSE 2043

BASIN SENSATION 702E

**BASIN ROSE J694**

BASIN ROSE F118

### RAAA EPDs

HB	GM	CED	BW	WW	YW	MILK	ME	HPG	CEM	STAY	MB	REA
97	49	9	-1.3	69	111	25	16	10	4	10	0.15	0.05



*A powerful EXT 5233 son with great birth to growth spread and he also ranks in the top percentiles for Milk and Total Maternal. Co-owned with Bieber Red Angus, SD and Tres Marias, Mexico.*

## TJS COWBOY WAY Y423

05/26/11 1A 100.0% TJS/Y423 #1466391

RED LAZY MC STOUT 30S

**RED LAZY MC COWBOY CUT 26U**

RED LAZY MC STAR 185M

LORENZEN JULIAN 3811

TJS PRIDE T785

TJS PRIDE P419

### RAAA EPDs

HB	GM	CED	BW	WW	YW	MILK	ME	HPG	CEM	STAY	MB	REA
131	50	5	-1.9	64	102	18	-6	8	7	12	0.24	0.45

**\$25  
per  
unit**



*Cowboy Way was our pick of the Shick's '13 bull sale, and his first calves are proving to be our best.  
SEMEN AVAILABLE. Co-owned with TJS Red Angus, Lodge Grass, Montana.*



## RED SIX MILE INTRIGUE 348X

03/08/10 1A 100.0% SIXM/348X #1424012

S A V 004 PREDOMINANT 4438

**PEAK DOT PREDOMINANT 135S**

LADY OF PEAK DOT 610K

RED TOWAW INDEED 104H

**RED SIX MILE MINERVA 681R**

RED CUMNOCK MINERVA 910F

### RAAA EPDs

HB	GM	CED	BW	WW	YW	MILK	ME	HPG	CEM	STAY	MB	REA
85	48	0	2.0	63	99	12	-14	9	5	7	0.35	0.10

*Intrigue 348X was one of two bulls we picked from the '11 Six Mile Ranch bull sale. He is sired by an outcross sire, Peak Dot Predominant 135S. SEMEN AVAILABLE. Co-owned with Six Mile Red Angus in Saskatchewan, Canada.*

## RED SIX MILE GRINGE 269X

02/21/10 1A 100.0% SIXM/269X #1424011

RED SIX MILE AVIATOR 217P

**RED SIX MILE SAKIC 832S**

RED SIX MILE SIERA 257P

RED VW ADMIRAL 80L

**RED YY SUPERIOR 373M**

RED BULLTOWN SUPERIOR 73K

### RAAA EPDs

HB	GM	CED	BW	WW	YW	MILK	ME	HPG	CEM	STAY	MB	REA
110	47	4	-1.5	68	97	18	-4	9	15	9	0.10	-0.18



*Gringe 269X is a powerful, top performing son of the popular Six Mile Sakic. SEMEN AVAILABLE. Co-owned with Six Mile Red Angus in Saskatchewan, Canada.*



## COLEY'S 503R TRAILBOSS 7170

04/08/07 1A 100.0% ICC/7170 #1185133

PERKS ADVANCE 121R

**COLEY'S MOJITO 503R**

NER COPPER QUEEN 2657

GILCHRIST CHIEF W515

MKM PRINCESS 3F

MKM PRINCESS 56D

**\$25  
per  
unit**

### RAAA EPDs

HB	GM	CED	BW	WW	YW	MILK	ME	HPG	CEM	STAY	MB	REA
82	48	2	0.2	57	98	20	0	11	5	8	0.11	0.06

*Coley's 503R Trailboss 7170 is a powerful son of growth leader, Coley's Mojito. As a yearling he posted a 17.37 REA! Co-owned with Coley Cattle Company in Birmingham, IA.*

***Our Latest Herdsires...***



**ANDRAS THUNDER A092**

11/05/13 1A 100.0% A092/WSA #1671538

ANDRAS THUNDER B106

ANDRAS THUNDER R196

ANDRAS PINETA B73

BFCK CHEROKEE CNYN 4912

MLK CRK LAKINA 502

MLK CRK LAKINA 156

***RAAA EPDs***

HB	GM	CED	BW	WW	YW	MILK	ME	HPG	CEM	STAY	MB	REA
119	51	6	-2.0	69	110	32	0	11	-2	12	0.48	0.18

*Our latest genetic acquisition, Thunder is the exciting top selling outcross bull from Andras' '15 spring bull sale.. Co-owned with Andras Stock Farm, IL, and Dykes Cattle Company, WA.*

**LSF RR EXTEND 2313Z**

01/28/12 1A 100.0% LJRA/2313Z #1547474

BASIN EXT 1925

BASIN EXT 5233

BASIN PRIMROSE 2043

UBAR GRAND PRIX 102

LSF RAINDANCE P4063 U8229

LSF RAINDANCE K1480 P4063

***RAAA EPDs***

HB	GM	CED	BW	WW	YW	MILK	ME	HPG	CEM	STAY	MB	REA
102	50	5	-0.9	75	117	22	12	11	8	11	0.11	0.53

***\$25  
per  
unit***



*We purchased Extend 2313Z after he was named the Grand Champion Red Angus bull at the '13 NILE. He is a son of EXT 5233 and out of a daughter of past National Champion bull, Grand Prix.*

**SEMEN AVAILABLE.** Co-owned with Ludvigson Stock Farm, MT and Seth Leachman, MT.

**ANDRAS JLJ SMART CHOICE R264**

09/01/12 1A 100.0% WSA/R264 #1600121

ANDRAS BANDO B120

ANDRAS MR BLACK JEANS R179

ANDRAS AMY B121

ANDRAS THUNDER B106

ANDRAS KURUBA R194

ANDRAS KURUBA B71

***RAAA EPDs***

HB	GM	CED	BW	WW	YW	MILK	ME	HPG	CEM	STAY	MB	REA
135	51	9	-2.1	61	102	32	-3	11	2	12	0.64	0.24

***\$25  
per  
unit***

***Smart Choice is the  
AI sire on many of  
the commercial bred  
heifers selling!***

*Exciting \$14,000 second high seller from the '14 Andras bull sale, Smart Choice is a complete outcross. Co-owned with Andras Stock Farm, IL.*



**JEFFRIES RED ANGUS - AGE ADVANTAGED 18 MONTH OLD BULLS**



## **Jeffries Age-Advantaged Red Angus Bulls...**

**Powerful...**

**Rugged...**

**Athletic...**

**Sound...**

**Fertile...**



**and ready to  
go to work!**



**Lots 1 through 86!**





**JEFFRIES RED ANGUS - AGE ADVANTAGED 18 MONTH OLD BULLS**



## Herd Bull Prospect...

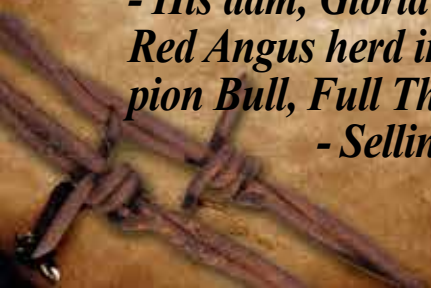


LOT 1		JEFFRIES DEEP END 498A													
		12/29/2013 JLJ/498A 1A-100 #1677964													
BIEBER ROOSEVELT W384 BIEBER ROLLIN DEEP Y118 BIEBER TILLY 399W  RED 6 MILE FULL THROTTLE171T JEFFRIES MS GLORIA Y934 SIX MILE GLORIA 125T MPPA: 96.4										Performance					
										BW AWW 8/1 WT 8/1 SC %IMF REA		65 637 1325 38.5 cm 3.83 13.43			
	EBL	GRID	CED	BW	WW	YW	MILK	ME	HPG	CEM	STAY	MB	YG	CW	REA
EPDs	86	52	2	-4.2	53	95	22	0	9	3	8	0.53	0.09	28	0.28
Top%	81	8	66	8	72	41	40	39	78	67	87	31	73	32	18

*- We couldn't think of a better way to kick off this year's event then with this awesome specimen. Deep End 498A is an extremely balanced, calving ease bull that posted a 110 REA ratio!*

*- His dam, Gloria Y934, comes from the highly decorated and renowned Six Mile Red Angus herd in Canada. She is sired by the 2009 World Angus Forum Champion Bull, Full Throttle.*

*- Selling 1/2 interest and full possession.*





**JEFFRIES RED ANGUS - AGE ADVANTAGED 18 MONTH OLD BULLS**

## Herd Bull Prospect...



LOT 2	JEFFRIES GO DEEP 516B														
	1/1/2014 JLJ/516B 1A-100 #1677986														
BIEBER ROOSEVELT W384 BIEBER ROLLIN DEEP Y118 BIEBER TILLY 399W										<i>Performance</i>					
RED PEAK DOT PREDOMINANT 77U JEFFRIES MS LIBRA Y970 SIX MILE LIBRA 889W MPPA: 98.8										BW	77				
										AWW	681				
										8/1 WT	1330				
										8/1 SC	39.5 cm				
										%IMF	4.61				
										REA	12.18				
	HRD	GRID	CED	BW	WW	YW	MILK	ME	HPG	CEM	STAY	MB	YG	CW	REA
EPDs	87	51	2	-0.6	60	103	21	-5	12	5	7	0.66	0.18	33	0.26
Top%	80	21	66	58	47	26	45	13	26	34	94	14	95	19	21



*- Go Deep 516B is another calving ease son of Rollin Deep, posting impressive 107 IMF and 105 REA ratios. A real looker, he very well made and easy to look at!*

*- His dam, Ms Libra Y970, is a young daughter of Peak Dot Predominant 77U, the out-cross sire that combines the likes of Angus Pathfinders, Traveler 004, Bando 598 and Saugahatchee. The grand-dam is a daughter of Sakic, one of the breed's premier CEM leaders.*

*- Selling 1/2 interest and full possession.*



**JEFFRIES RED ANGUS - AGE ADVANTAGED 18 MONTH OLD BULLS**



## **Herd Bull Prospect...**



LOT 3		JEFFRIES DEPTH CHARGE 556B													
		1/13/2014    JLJ/556B    1A-100    #1678020													
BIEBER ROOSEVELT W384 BIEBER ROLLIN DEEP Y118 BIEBER TILLY 399W  BASIN ENERGIZER 20R5 BASIN SAM 8948 BASIN SAM J430 MPPA: 99.4										Performance					
										BW				85	
										AWW				643	
										8/1 WT				1350	
										8/1 SC				40 cm	
										%IMF				4.51	
										REA				13.59	
	HRD	GRD	CED	BW	WW	YW	MILK	ME	HPG	CEM	STAY	MB	YG	CW	REA
EPDs	80	52	4	0.3	67	114	24	2	11	3	7	0.68	0.10	35	0.46
Top%	85	10	45	75	22	9	19	58	45	67	92	12	77	14	6



**- Here is one powerful and attractive dude! Depth Charge 556B is a premier growth and carcass sire, posting an awesome ultrasound with ratios of 114 for IMF and 120 for REA!**

**- His dam, Sam 8948, is an out-cross Basin bred cow, stacking EXT, Traveler and Rito 2100 with the great Primrose 258 cow.**

**- Selling 1/2 interest and full possession.**





**JEFFRIES RED ANGUS - AGE ADVANTAGED 18 MONTH OLD BULLS**



## Herd Bull Prospect...



LOT		JEFFRIES EVEN DEEPER 531B													
4		1/4/2014 JLJ/531B 1A-100 #1677995													
BIEBER ROOSEVELT W384 BIEBER ROLLIN DEEP Y118 BIEBER TILLY 399W  RED BRYLOR NEW TREND 22 RED BRYLOR PRISCILLA 304S RED WIL-SEL PRISCILLA R. 21K MPPA: 99.1										Performance					
										BW AWW 8/1 WT 8/1 SC %IMF REA			88 711 1410 37 cm 3.78 13.1		
	HRD	GRID	CED	BW	WW	YW	MILK	ME	HPG	CEM	STAY	MB	YG	CW	REA
EPDs	83	49	-1	2.1	71	112	23	-4	12	1	9	0.49	0.09	40	0.27
Top%	83	46	90	96	13	12	32	16	26	89	77	39	73	7	19



Lot 4's dam...  
Priscilla 304S!

*that possesses that wedge shape and unreal muscle expression.*

*- His dam, Priscilla 304S, was our pick of the cows in Brylor's '12 female offering, and she is an impressive matron! She might be the deepest ribbed female the breed has ever seen. Her sire, New Trend 22D, is a proven +30 Milk trait leader.*

*- Selling 1/2 interest and full possession.*



# Performance & muscle... Rollin Deep sons!

*Lot 5 & 6...  
as good of a set  
of twins as you  
will find!*



LOT 5		MLCRA MASSEY'S SHOOTER B001														
		1/14/2014 MLCRA/B001 1A-100 #1678780														
BIEBER ROOSEVELT W384 BIEBER ROLLIN DEEP Y118 BIEBER TILLY 399W  LSF CANYON CLASSIC 3037N JEFFRIES U522 MS 12L HIGH MARK OF 4L R94P MPPA: 104 50K DNA Tested										Performance						
										BW AWW 8/1 WT 8/1 SC %IMF REA			71 747 1490 42 cm 3.66 12.54			
	HRD	GRID	CED	BW	WW	YW	MILK	ME	HPG	CEM	STAY	MB	YG	CW	REA	
EPDs	60	50	2	1.9	80	126	22	3	12	3	6	0.53	0.11	48	0.43	
Top%	96	27	66	95	3	3	35	67	31	67	98	31	80	2	7	

*- The first of a pair of powerful twin Rollin Deep sons, Shooter B001 is loaded with performance and muscle, ranking in the top 3% of the breed for WW and YW!*



Lot 5 & 6's dam, Jeffries U522...

*- Boom B003 is an absolute tank! Super deep ribbed and easy fleshing, he offers breed leading growth and carcass traits!*

LOT 6		MLCRA MASSEY'S BOOM B003														
		1/14/2014 MLCRA/B003 1A-100 #1678781														
		BIEBER ROOSEVELT W384 BIEBER ROLLIN DEEP Y118 BIEBER TILLY 399W  LSF CANYON CLASSIC 3037N JEFFRIES U522 MS 12L HIGH MARK OF 4L R94P MPPA: 104 50K DNA Tested										Performance				
												BW AWW 8/1 WT 8/1 SC %IMF REA		89 642 1400 44 cm 5.07 11.99		
		HRD	GRID	CED	BW	WW	YW	MILK	ME	HPG	CEM	STAY	MB	YG	CW	REA
EPDs		68	50	2	1.7	78	121	23	3	12	4	6	0.57	0.11	44	0.46
Top%		93	31	66	94	4	5	32	67	20	51	95	25	80	4	6



**JEFFRIES RED ANGUS - AGE ADVANTAGED 18 MONTH OLD BULLS**

## **Herd Bull Prospect...**



LOT 7		JEFFRIES AMERICAN BREW 533B													
		1/4/2014 JLJ/533B 1A-100 #1677999													
RED SSS OLY 554T VGW OLY 903 VGW TM-DORA 0758  5L AMERICAN RIDE 3265-9078 JEFFRIES MS RIDGE Z69 MS RIDGE RUNNER OF 4L T761 MPPA: 103.2										<i>Performance</i>					
										BW AWW 8/1 WT 8/1 SC %IMF REA		79 764 1435 38 cm 4.43 11.79			
	UPLD	GRD	CED	BW	WW	YW	MILK	ME	HPG	CEM	STAY	MB	YG	CW	REA
EPDs	108	52	1	-0.9	66	121	16	6	9	5	11	0.35	0.04	40	0.3
Top%	56	8	76	52	26	5	86	88	70	34	52	71	51	7	16

*- Like a good beer, American Brew 533B is really smooth! This low birth Oly son is a spitting image of his daddy. He posted positive indexes across the board with a 108 WR, 111 YR, 103 IMF and 102 REA.*

*- His dam, Ms Ridge Z69, is a first calf daughter of 5L American Ride, the black/red carrier 5L Tradition son that sold in Mehlhoff's fall '09 sale to Silver Spur Ranches.*

*- Selling 1/2 interest and full possession.*



# JEFFRIES RED ANGUS - AGE ADVANTAGED 18 MONTH OLD BULLS

## Oly 903 sons for Calving ease and longevity...

*Lot 7... he has  
the performance  
and look of a  
champion!*



LOT 8		JEFFRIES CONTENDER 551B													
		1/9/2014 JLJ/551B 1A-100 #1678015													
RED SSS OLY 554T VGW OLY 903 VGW TM-DORA 0758										Performance					
RED LONE STONE PURSUIT 81W JEFFRIES MS DUCHESS Z50 RED KBJ DUCHESS 1020U MPPA: 103.2										BW		85			
										AWW		763			
										8/1 WT		1445			
										8/1 SC		36 cm			
										%IMF		3.72			
										REA		12.88			
	EBL	GRD	CED	BW	WW	YW	MILK	ME	HPG	CEM	STAY	MB	YG	CW	REA
EPDs	98	50	0	1	73	119	11	0	10	6	9	0.28	-0.02	43	0.42
Top%	67	30	84	86	9	6	97	42	52	21	78	84	25	5	8

*- Wow check out the cookie-cutter pattern this stud displays! Contender 551B posted indexes of: 108 WR, 107 YR and 111 REA ratio.*

*- His dam is a first calf daughter of muscle and type leader, Lone Stone Pursuit 81W.*



*Lot 8... bares the  
'Abigrace' royal  
family name!*

LOT 9		JEFFRIES 903-453A													
		12/14/2013 JLJ/453A 1A-100 #1677927													
RED SSS OLY 554T VGW OLY 903 VGW TM-DORA 0758										Performance					
SIX MILE INTEGRITY 691W JEFFRIES MS ABIGRACE Z72 C-BAR ABIGRACE X34 MPPA: 103.6										BW		77			
										AWW		764			
										8/1 WT		1365			
										8/1 SC		39 cm			
										%IMF		4.47			
										REA		12.69			
	EBL	GRD	CED	BW	WW	YW	MILK	ME	HPG	CEM	STAY	MB	YG	CW	REA
EPDs	139	52	2	-2.6	64	105	23	3	10	9	14	0.59	-0.01	31	0.27
Top%	21	8	66	23	33	22	32	67	51	3	27	22	29	22	19

*- Another top Oly son, 453A boasts excellent performance indexes of: 109 WR, 104 YR, 109 IMF and 103 REA.*

*- His dam is a first calf Integrity daughter that comes from the famed Abigrace cow family.*



**JEFFRIES RED ANGUS - AGE ADVANTAGED 18 MONTH OLD BULLS**



## **Herd Bull Prospect...**



LOT 10		JEFFRIES POWER KEG 528B																						
		1/3/2014    JLJ/528B    1A-100    #1677974																						
RED SSS OLY 554T VGW OLY 903 VGW TM-DORA 0758  LSF COMBINATION A301M BIEBER NOLINAGE 159U BIEBER NOLINAGE 10051 MPPA: 100										Performance					BW AWW 8/1 WT 8/1 SC %IMF REA					88 770 1610 39.5 cm 3.8 12.84				
		IBLD	GRID	CED	BW	WW	YW	MILK	ME	HPG	CEM	STAY	MB	YG	CW	REA								
EPDs		77	52	-4	0.6	74	127	11	6	12	2	9	0.63	0.06	44	0.35								
Top%		88	5	99	80	7	2	97	92	23	80	82	17	61	4	12								

*- Power Keg 528B is exactly what his name implies... he is loaded with performance and muscle! He posted a 107 WR and 111 YR.*

*- His dam, Nolinage 159U, has been a very solid producer, with progeny averages of five calves of: 102 AWR, 102 AYR, 104 IMF and 108 REA. Her young Hughes W109 daughter in the*

*herd is the dam of the Brown Alliance open heifer featured as Lot 95.*

*- Selling 1/2 interest and full possession.*





**JEFFRIES RED ANGUS - AGE ADVANTAGED 18 MONTH OLD BULLS**



## **Herd Bull Prospect...**



LOT		JEFFRIES CALCULATED 518B													
11		1/1/2014		JLJ/518B		1A-100		#1677988							
RED SSS OLY 554T										Performance					
VGW OLY 903										BW		95			
VGW TM-DORA 0758										AWW		775			
SHOCO DATA										8/1 WT		1560			
MS CALCULATOR OF 4L 19R										8/1 SC		38 cm			
4L MISSY RAMBO R624										%IMF		3.46			
MPPA: 98.2										REA		13.16			
	HBLD	GRD	CED	BW	WW	YW	MILK	ME	HPG	CEM	STAY	MB	YG	CW	REA
EPDs	103	50	1	1.3	68	111	16	6	8	7	11	0.44	0.06	34	0.21
Top%	61	37	76	89	19	13	86	91	86	12	56	49	61	17	28



**- One of the most impressive bulls ever raised at Jeffries, Calculated 581B is near flawless in his structure, performance and type! He posted impressive performance indexes of 107 WR, 109 YR and 105 REA ratio!**

**- His dam, 19R, is a model cow, deep in her kind and loaded with productivity. She is sired by Shoco Data, a past ABS sire who is known for his outstanding females.**

**- Selling 1/2 interest and full possession.**





**JEFFRIES RED ANGUS - AGE ADVANTAGED 18 MONTH OLD BULLS**



**Oly 903 sons with extra performance...**

*Lot 12... this  
truck will mash  
the scales!*



LOT 12	JEFFRIES 903-512A															
	12/31/2013 JLJ/512A 1A-100 #1677982															
RED SSS OLY 554T VGW OLY 903 VGW TM-DORA 0758  BASIN SALUTE R060 BASIN ERICA 8150 BASIN ERICA 1791 MPPA: 101.1										Performance						
										BW AWW 8/1 WT 8/1 SC %IMF REA		83 715 1450 37.5 cm 3.94 12.57				
	IBLD	GRID	CED	BW	WW	YW	MILK	ME	HPG	CEM	STAY	MB	YG	CW	REA	
EPDs	103	52	-1	-0.2	63	119	17	6	10	6	11	0.62	0.13	40	0	
Top%	62	4	90	66	38	6	77	88	57	21	59	18	86	7	70	

*- Rugged and super stout, 512A posted impressive indexes of: 101 WR, 108 YR, 102 IMF and 103 REA.*

*- His dam has yet to miss, earning a 101.1 MPPA on her five calves.*

*Lot 13... covers a  
broad area of  
country!*



LOT 13	JEFFRIES 903-447A														
	12/11/2013    JLJ/447A    1A-100    #1677922														
RED SSS OLY 554T VGW OLY 903 VGW TM-DORA 0758  3J MAC W259 3J MS KAMEY Y317 3J MS MATTIE UP W317 MPPA: 98.4										Performance					
										BW		90			
										AWW		673			
										8/1 WT		1505			
										8/1 SC		36 cm			
										%IMF		3.59			
										REA		12.01			
	HB	GR	CE	BW	WW	YW	MILK	ME	HPG	CEM	STAY	MB	YG	CW	REA
EPDs	108	51	2	-0.1	66	115	15	3	11	6	10	0.39	0.12	39	0.15
Top%	55	22	66	68	25	9	91	67	38	21	66	61	83	9	38

*- Another chunk by Oly 903, 447A boasts a pretty nice -0.6 BW to 115 YW EPD spread.*

*- His dam comes from the famed Mattie cow family that produced bulls like Firestorm and King O Mat.*

## Herd Bull Prospect...



LOT 14		JEFFRIES BRAVEHEART 580B (ET)														
		1/22/2014 JLJ/580B 1A-100 #1678041														
RED SSS OLY 554T VGW BRAVO 955 VGW 262-YUMA 0526  BASIN EXT 8926 JEFFIES MS DIXIE Y947 MS ADVANCER OF 4L RM37 MPPA: 102												Performance				
												BW		96		
												AWW		827		
												8/1 WT		1680		
												8/1 SC		43 cm		
												%IMF		3.99		
												REA		16.62		
		BLD	GRD	CED	BW	WW	YW	MILK	ME	HPG	CEM	STAY	MB	YG	CW	REA
EPDs	85	51	-1	0.7	72	124	17	8	8	2	10	0.42	-0.02	45	0.68	
Top%	82	11	90	82	10	4	78	97	86	80	68	54	25	3	2	

*- In order to bring our customers a better and more consistent product, we have greatly expanded our ET program, implanting over 150 embryos this past spring! Braveheart 580B is the result of our ET program... and he is just the tip of the iceberg!*

*- Braveheart is the stoutest bull in the offering, posting an amazing 827 AWW and weighing in at 1680 lbs. the first of August! His growth EPDs rank in the*

*top 10% for WW and the top 4% for YW and he also ranks in the top 2% for REA! - His dam, Ms Dixie Y947, is the top young EXT 8926 daughter in the herd, earning a 103.7 MPPA on her progeny with a 106 AWR, 104 AYR and 112 REA average.*

*- Selling 1/2 interest and full possession.*



**JEFFRIES RED ANGUS - AGE ADVANTAGED 18 MONTH OLD BULLS**



## The last of the Basin EXT 8926 sons...

*Lot 15... boasts a  
5.60 %IMF with  
a 144 ratio!*



LOT 15	JEFFRIES 8926-513B														
	1/1/2014    JLJ/513B    1A-100    #1677983														
BASIN EXT 5233 BASIN EXT 8926 BASIN ROSE J694  MESSMER PACKER S008 JEFFRIES MS DYNA Y854 BASIN DYNAMO 8359 MPPA: 101.1										Performance					
										BW		72			
										AWW		705			
										8/1 WT		1405			
										8/1 SC		37.5 cm			
										%IMF		5.6			
										REA		11.1			
	HBLD	GRID	CED	BW	WW	YW	MILK	ME	HPG	CEM	STAY	MB	YG	CW	REA
EPDs	132	51	6	-1.6	68	114	19	10	14	6	13	0.55	0.23	35	0.13
Top%	27	16	28	39	20	10	62	99	5	21	32	28	98	14	42

*- Here is an awesome heifer bull prospect with great carcass quality trait!*

*- He is royally bred, stacking EXT with Packer, back onto a 104.9 MPPA Mulberry daughter.*

*Lot 16... we  
would like all our  
heifer bulls to  
look like this!*



LOT 16	JEFFRIES 8926-485A														
	11/26/2013 JLJ/485A 1A-100 #1677951														
BASIN EXT 5233 BASIN EXT 8926 BASIN ROSE J694  RED TER-RON RELOAD 703T SIX MILE & CO LASSIE 384X SIX MILE LASSIE 377P MPPA: 90.7										Performance					
										BW AWW 8/1 WT 8/1 SC %IMF REA		75 559 1380 39 cm			
	HBLD	GRID	CED	BW	WW	YW	MILK	ME	HPG	CEM	STAY	MB	YG	CW	REA
EPDs	99	48	4	-1.6	50	80	15	-1	8	2	11	0.33	0.03	14	0.01
Top%	66	65	45	39	81	73	90	30	86	80	64	75	47	75	68

*- Another low birth, calving ease EXT son out of an outcross Canadian bred dam that stacks Reload and Towaw Indeed 104H.*



## Herd Bull Prospect...



LOT 17	JEFFRIES EXTRA 629B (ET)														
	2/4/2014    JLJ/629B    1A-100    #1678254														
BASIN EXT 5233										Performance					
BASIN EXT 7455															
BASIN CHINOOK 06P7										BW			95		
										AWW			602		
BIEBER H HUGHES W109										8/1 WT			1300		
JEFFRIES MS QUEEN Y930										8/1 SC			37 cm		
BASIN RED QUEEN 8630										%IMF			3.99		
MPPA: 99.2										REA			11.55		
	IBLD	GRID	CED	BW	WW	YW	MILK	ME	HPG	CEM	STAY	MB	YG	CW	REA
EPDs	148	50	4	-0.8	73	111	22	6	16	7	14	0.46	0.05	35	0.02
Top%	14	27	45	54	10	13	40	88	2	12	18	45	56	15	66

- Another product of our ET program, Extra 629B is a very long and smooth made bull with an exciting heritage!

- His sire, EXT 7455, was a top herd-sire at Strawberry Ridge in MT for many years, and he is a paternal brother to EXT 8926! His full sister in blood topped our sale last year to Dykes Cattle Co. in WA, for \$14,000.

- His dam, Ms Queen Y930, is a powerful young Hughes W109 daughter

going back to a daughter of perpetual maternal leader, Basin Trendsetter 6074. The foundation dam is an outcross female stacking Angus greats, Dateline and Precision.

- Selling 1/2 interest and full possession.



**JEFFRIES RED ANGUS - AGE ADVANTAGED 18 MONTH OLD BULLS**



## Herd Bull Prospect...



LOT 18		JEFFRIES STACKED BEEF 456A													
		12/16/2013    JLJ/456A    1A-100    #1677929													
BECKTON JULIAN GG B571 HXC CONQUEST 4405P HXC ELLIE MAY MA638  BIEBER H HUGHES W109 JEFFRIES MS DYNAMO Z97 BASIN DYNAMO 8359 MPPA: 105.2										Performance					
										BW		75			
										AWW		792			
										8/1 WT		1405			
										8/1 SC		37 cm			
										%IMF		5.13			
										REA		10.87			
	IBLD	GRID	CED	BW	WW	YW	MILK	ME	HPG	CEM	STAY	MB	YG	CW	REA
EPDs	168	52	10	-2.8	76	118	23	1	6	6	16	0.83	0.2	39	0.18
Top%	6	4	7	21	6	6	28	46	96	21	7	5	96	8	33

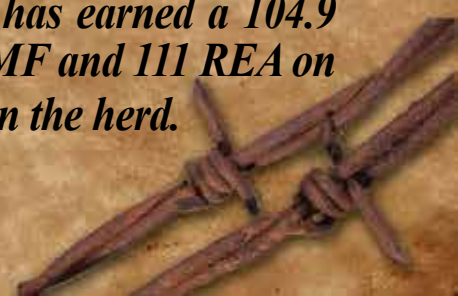
*- Stacked Beef 456A is a real chunk! Loaded with performance and a royally bred pedigree, he posted indexes of 113 WR, 108 YR and 125 IMF ratio! He ranks in the top 8% or better in the entire breed for eight different traits!*

*- His sire, Conquest, needs no introductions. The #1 used sire in the breed for the past several years, he is the industry's premier calving ease bull.*

*- His dam, Ms Dynamo Z97, is an awe-*

*some young Hughes W109 daughter out of Basin Dynamo 8359, one of our premier donors in the herd. This powerful Mulberry daughter has earned a 104.9 MPPA with an awesome record of: 106 AWR, 110 AYR, 113 IMF and 111 REA on five calves, including a young Rollin Deep daughter retained in the herd.*

*- Selling 1/2 interest and full possession.*





# JEFFRIES RED ANGUS - AGE ADVANTAGED 18 MONTH OLD BULLS



## Our Latest Genetics... Conquest sons out of 1st Calf Heifers!



LOT 19	JEFFRIES CONQUEST 458A														
	12/17/2013 JLJ/458A 1A-100 #1677930														
BECKTON JULIAN GG B571 HXC CONQUEST 4405P HXC ELLIE MAY MA638  SIX MILE WITCH DOCTOR 18W JEFFRIES MS GIRL Z125 JEFFRIES KBJ 899T-W568 MPPA: 99.2										Performance					
										BW		80			
										AWW		689			
										8/1 WT		1365			
										8/1 SC		41 cm			
										%IMF		3.57			
										REA		13.44			
	HBLD	GRID	CED	BW	WW	YW	MILK	ME	HPG	CEM	STAY	MB	YG	CW	REA
EPDs	118	48	6	-0.2	61	97	23	-3	2	2	14	0.28	0.09	31	0.36
Top%	43	66	28	66	44	38	27	19	99	80	25	84	73	24	11

- 458A leads off three Conquest sons all out of first calf heifers. This moderate and meaty, big testicled bull posted a 110 REA ratio and is out of an outcross Canadian bred dam!

LOT 20		JEFFRIES CONQUEST 493A													
		11/28/2013    JLJ/493A    1A-100    #1677959													
BECKTON JULIAN GG B571 HXC CONQUEST 4405P HXC ELLIE MAY MA638  RED SIX MILE SAKIC 832S JEFFRIES MS LAKINA Z10 JEFFRIES P256-W591 MPPA: 96										Performance					
										BW AWW 8/1 WT 8/1 SC %IMF REA		68 631 1305 36.5 cm			
	HBLD	GRID	CED	BW	WW	YW	MILK	ME	HPG	CEM	STAY	MB	YG	CW	REA
EPDs	121	50	10	-4.7	62	96	21	4	2	7	12	0.35	0.1	25	-0.1
Top%	39	28	7	5	41	40	46	76	99	12	39	71	77	42	89



- 493A is a very deep bodied, calving ease bull that ranks in the top 5% for BW and top 7% for CED! Maternally he is out of a daughter of CEM leader, Sakic, going back to a Marias x Cherokee Cnyn bred foundation.

LOT 21	JEFFRIES CONQUEST 489A														
	12/26/2013 JLJ/489A 1A-100 #1677955														
BECKTON JULIAN GG B571 HXC CONQUEST 4405P HXC ELLIE MAY MA638  BASIN EXT 8926 JEFFRIES MS LADY R Z169 RED KBJ LADY ROSETTE 876R MPPA: 100										Performance					
										BW		63			
										AWW		670			
										8/1 WT		1210			
										8/1 SC		38 cm			
										%IMF		3.3			
										REA		12.52			
	HBLD	GRID	CED	BW	WW	YW	MILK	ME	HPG	CEM	STAY	MB	YG	CW	REA
EPDs	114	51	11	-5.4	48	80	27	4	4	4	12	0.45	0.06	13	-0.05
Top%	47	23	5	3	83	72	9	75	99	51	48	47	61	77	81



- Top calving ease and maternal, 489A ranks in the top 3% for BW, the top 5% for CED and the top 9% for Milk. His dam is a first calf EXT 8926 daughter going back to an outcross Rainmaker x Premier Patriot bred foundation.





**JEFFRIES RED ANGUS - AGE ADVANTAGED 18 MONTH OLD BULLS**



## Calving Ease deluxe... Peerless sons out of 1st Calf Heifers!



LOT		JEFFRIES PEERLESS 603B													
22		1/27/2014    JLJ/603B    1A-100    #1678063													
BECKTON JULIAN GG B571  CRS DIAMND PEERLESS 9017  MS CASEY 575   SIX MILE ITEGRITY 691W  JEFFRIES MS DIXIE Z30  JEFFRIES MS DIXIE X651  MPPA: 102.8										Performance					
										BW				72	
										AWW				705	
										8/1 WT				1300	
										8/1 SC				39.5 cm	
%IMF				4.03											
REA				13.87											
	BLD	GRID	CED	BW	WW	YW	MILK	ME	HPG	CEM	STAY	MB	YG	CW	REA
EPDs	160	50	11	-2.8	64	98	16	-3	10	8	14	0.38	0.05	26	0.45
Top%	9	36	5	21	32	36	84	21	54	6	25	63	56	37	6

- 603B leads off a set of three paternal brothers sired by calving ease leader, Peerless 9017. He posted a 107 WR, 107 YR and 110 REA ratio with only a 72 BW!



LOT		JEFFRIES PEERLESS 605B													
23		1/29/2014 JLJ/605B 1A-100 #1678065													
BECKTON JULIAN GG B571 CRS DIAMND PEERLESS 9017 MS CASEY 575  BROWN ENDORSEMENT W7671 JEFFRIES MS ENDORS Z100 TR LORI CATALYST W903 MPPA: 100										Performance					
										BW				60	
										AWW				656	
										8/1 WT				1185	
										8/1 SC				35 cm	
										%IMF				5.07	
										REA				13.31	
	BLD	GRID	CED	BW	WW	YW	MILK	ME	HPG	CEM	STAY	MB	YG	CW	REA
EPDs	147	53	12	-5.9	53	87	16	-1	9	8	12	0.91	0.05	16	0.26
Top%	15	3	3	2	72	60	84	30	72	6	48	3	56	69	21

- Wow! Check out the data on this heifer bull deluxe: 60 BW, 100 WR, 104 YR, 111 IMF and 106 REA! Maternally he stacks Marbling leader, Endorsement, with foundation sires, Marias and King Rob!

LOT		JEFFRIES PEERLESS 651B													
24		2/12/2014 JLJ/651B 1A-100 #1678110													
BECKTON JULIAN GG B571 CRS DIAMND PEERLESS 9017 MS CASEY 575  RED LONE STONE PURSUIT 81W JEFFRIES MS Z101 BASIN SAM 8948 MPPA: 98										Performance					
										BW				65	
										AWW				620	
										8/1 WT				1200	
										8/1 SC				36.5 cm	
										%IMF				4.97	
										REA				10.71	
	BLD	GRID	CED	BW	WW	YW	MILK	ME	HPG	CEM	STAY	MB	YG	CW	REA
EPDs	133	50	12	-4.6	50	80	12	-7	10	8	10	0.42	0.12	12	-0.07
Top%	27	40	3	6	80	73	96	7	64	6	69	54	83	79	84



- Top 3% CED, top 6% BW, top 7% ME and top 6% CEM on this smooth made Peerless son. He posted a 109 IMF ratio!



**Top Herdbuilder sons of Hughes W109...**

**Lot 25... this  
bruiser posted an  
826 AWW!**



LOT	JEFFRIES HUGHES 584B															
25	1/23/2014 JLJ/584B 1A-100 #1678045															
BASIN HOBO 0545 BIEBER H HUGHES W109 BASIN ROSE 06T0  RED WILDMAN DENALI 19L PRIDE OF SIX MILE 520R RED PTTV PRIDE 3'97 MPPA: 103.6								Performance								
								BW	84							
								AWW	826							
								8/1 WT	1555							
								8/1 SC	42 cm							
								%IMF	3.3							
								REA	13.71							
	EBL	GRD	CED	BW	WW	YW	MILK	ME	HPG	CEM	STAY	MB	YG	CW	REA	
EPDs	135	48	2	0.1	66	98	20	-1	13	6	14	0.18	0.08	23	0.16	
Top%	25	83	66	72	26	35	60	31	15	21	21	93	69	47	36	

**- One of the top performers in the offering, 584B posted an 826 AWW, 115 WR, 117 YR and 110 REA ratio!**

**- His dam is an outcross Canadian bred female stacking Rambo, High Line and New Trend!**

**Lot 26...  
double bred  
Hughes W109!**



LOT	JEFFRIES HUGHES 641B															
26	2/9/2014 JLJ/641B 1A-100 #1678100															
BASIN HOBO 0545 BIEBER H HUGHES W109 BASIN ROSE 06T0  BIEBER H HUGHES W109 JEFFRIES MS TILLY Y874 BIEBER TILLY 121U MPPA: 102.4								Performance								
								BW	72							
								AWW	708							
								8/1 WT	1430							
								8/1 SC	39 cm							
								%IMF	4.72							
								REA	12.94							
	EBL	GRD	CED	BW	WW	YW	MILK	ME	HPG	CEM	STAY	MB	YG	CW	REA	
EPDs	168	51	3	-2.6	72	110	19	0	12	3	17	0.66	0.13	27	0.3	
Top%	6	12	55	23	11	14	64	36	18	67	4	14	86	34	16	

**- A double bred Hughes W109 son, 641B boasts one of the best records in the sale: 72 BW, 106 WR, 112 YR, 119 IMF and 114 REA!**



# JEFFRIES RED ANGUS - AGE ADVANTAGED 18 MONTH OLD BULLS



**Bred for longevity... Hughes W109 boasts a +20 Stayability EPD!**

LOT	JEFFRIES HUGHES 578B														
27	1/21/2014 JLJ/578B 1A-100 #1678039														
BASIN HOBO 0545 <b>BIEBER H HUGHES W109</b> BASIN ROSE 06T0  RED SIX MILE SAKIC 832S <b>JEFFRIES MS LASSIE-Y886</b> SIX MILE LASSIE 321T MPPA: 108										Performance					
										BW	75				
										AWW	801				
										8/1 WT	1380				
										8/1 SC	34 cm				
										%IMF	4.6				
										REA	10.87				
	HBLD	GRID	CED	BW	WW	YW	MILK	ME	HPG	CEM	STAY	MB	YG	CW	REA
EPDs	147	48	2	-1.4	68	95	22	-3	10	8	15	0.47	0.15	23	-0.06
Top%	15	67	66	43	20	42	38	23	59	6	12	43	90	49	83



- Huge ratios and record, 578B posted a 75 BW with a 801 AWW, 120 WR, 116 YR and 116 IMF ratio! His dam is a 108 MPPA daughter of Sakic, one of the breed's premier CEM leaders with a +19 EPD!



LOT	JEFFRIES HUGHES 585B														
28	1/24/2014 JLJ/585B 1A-100 #1678046														
BASIN HOBO 0545 <b>BIEBER H HUGHES W109</b> BASIN ROSE 06T0  BIEBER MAKIN HAY 9913 <b>BIEBER DAPHINE 183U</b> BIEBER DAPHINE 8419 MPPA: 103.1										Performance					
										BW	87				
										AWW	721				
										8/1 WT	1460				
										8/1 SC	40 cm				
										%IMF	4.02				
										REA	11.1				
	HBLD	GRID	CED	BW	WW	YW	MILK	ME	HPG	CEM	STAY	MB	YG	CW	REA
EPDs	116	49	1	1.6	81	123	15	3	10	0	14	0.43	0.13	41	0.2
Top%	45	44	76	92	2	4	90	67	51	94	26	52	86	6	29

- Another top performer, 585B posted a 108 WR, 114 YR and 102 IMF ratio! His dam is a 103.1 MPPA daughter of maternal leader, Bieber Makin Hay 9913.

LOT	JEFFRIES HUGHES 562B														
29	1/15/2014 JLJ/562B 1A-100 #1678025														
BASIN HOBO 0545 <b>BIEBER H HUGHES W109</b> BASIN ROSE 06T0  RED SIX MILE AVIATOR 217P <b>SIX MILE MS. DYNAMO 317X</b> RED SIX MILE MS. DYNAMO 579K MPPA: 92.4										Performance					
										BW	72				
										AWW	699				
										8/1 WT	1520				
										8/1 SC	36.5 cm				
										%IMF	3.8				
										REA	10.81				
	HBLD	GRID	CED	BW	WW	YW	MILK	ME	HPG	CEM	STAY	MB	YG	CW	REA
EPDs	152	47	1	-0.4	64	86	14	-4	10	5	17	0.32	0.03	20	0.07
Top%	13	87	76	62	33	61	93	15	53	34	6	77	47	57	54



**Proud member for over 20 years!**

- One of the stout bulls in the offering at 1520 lbs, 562B is out of an outcross Canadian bred dam stacking Aviator 217P and Towaw Indeed 104H.



## Herd Bull Prospect...



LOT 30	JEFFRIES OK COWBOY 508A														
	12/31/2013 JLJ/508A 1A-100 #1677978														
RED LAZY MC COWBOY CUT 26U TJS COWBOY WAY Y423 TJS PRIDE T785										Performance					
RED FINE LINE MULBERRY 26P JEFFRIES MS MIMI Y835 BIEBER MIMI 261U MPPA: 103.1										BW	78				
										AWW	722				
										8/1 WT	1420				
										8/1 SC	39 cm				
										%IMF	6.13				
										REA	11.46				
	HBLD	GRID	CED	BW	WW	YW	MILK	ME	HPG	CEM	STAY	MB	YG	CW	REA
EPDs	144	51	2	-0.5	69	113	15	-4	13	8	13	0.63	0.14	35	0.22
Top%	17	15	66	60	18	11	88	15	17	6	33	17	88	14	26



- Check out the Marbling here! OK Cowboy 508A posted the #1 IMF scan in the offering with a 6.13 %IMF and 159 ratio! He also posted a 101 WR and 108 YR.
- His dam, Ms Mimi Y835, is one of the top young cows in the herd, earning a 103.1 MPPA with a 105 AWR and 108 AYR on her calves. She stacks Mulberry on top of a Bieber Prince Charles x Make My Day bred dam from the famed Mimi tribe.
- Selling 1/2 interest and full possession.



# JEFFRIES RED ANGUS - AGE ADVANTAGED 18 MONTH OLD BULLS



## The 'Cowboy kind'... sons of TJS Cowboy Way Y423!



LOT 31		JEFFRIES COWBOY 555B													
		1/12/2014    JLJ/555B    1A-100    #1678019													
RED LAZY MC COWBOY CUT 26U TJS COWBOY WAY Y423 TJS PRIDE T785										Performance					
RED SIX MILE SAKIC 832S SIX MILE LARKISA 707W RED SIX MILE LARKISA 46G MPPA: 97.6										BW AWW 8/1 WT 8/1 SC %IMF REA		75 672 1330 40 cm 3.48 12.61			
	BLD	GRD	CED	BW	WW	YW	MILK	ME	HPG	CEM	STAY	MB	YG	CW	REA
EPDs	108	48	4	-2.2	54	84	19	0	7	9	10	0.11	0.02	17	0.09
Top%	56	76	45	29	69	65	64	38	92	3	68	96	42	67	50

- This stud has the look of a herdbull! 555B is a very shapely Cowboy Way son with a 75 BW and a -2.2 BW EPD.

- His dam, Larkisa 707W, is a productive daughter of maternal calving ease leader, Six Mile Sakic 832S.



LOT 32		JEFFRIES COWBOY 606B													
		1/29/2014    JLJ/606B    1A-100    #1678066													
RED LAZY MC COWBOY CUT 26U TJS COWBOY WAY Y423 TJS PRIDE T785										Performance					
RED GOLD-BAR TANTALIZE R 122 JEFFRIES KBJ 899T-W568 RED KBJ RED GIRL 899T MPPA: 101.8										BW AWW 8/1 WT 8/1 SC %IMF REA		80 657 1230 39.5 cm 4.05 13.39			
	BLD	GRD	CED	BW	WW	YW	MILK	ME	HPG	CEM	STAY	MB	YG	CW	REA
EPDs	109	48	-1	0.8	59	94	21	-6	9	4	12	0.23	-0.03	27	0.53
Top%	53	69	90	83	53	43	49	9	80	51	46	89	22	35	4

- Check out the muscle shape on this truck! 606B posted an impressive 104 YR, 102 IMF and 118 REA with only an 80 BW.

- His dam, W568, is a total Canadian outcross female out of Red Girl 899T, one of the top females in the herd with a 106 MPPA on seven calves.



# JEFFRIES RED ANGUS - AGE ADVANTAGED 18 MONTH OLD BULLS

## Calving ease sons of Cowboy Way...

Come join us for lunch!



LOT		JEFFRIES COWBOY 552B													
33		1/10/2014    JLJ/552B    1A-100    #1678016													
RED LAZY MC COWBOY CUT 26U TJS COWBOY WAY Y423 TJS PRIDE T785  RED SIX MILE AVIATOR 217P SIX MILE ROSELLA 430U RED SIX MILE ROSELLA 514R MPPA: 95.6											Performance				
											BW	85			
											AWW	681			
											8/1 WT	1285			
											8/1 SC	35 cm			
											%IMF	3.55			
											REA	9.92			
	HBLD	GRID	CED	BW	WW	YW	MILK	ME	HPG	CEM	STAY	MB	YG	CW	REA
EPDs	104	46	5	-0.8	51	74	17	-4	9	8	10	0.1	0.04	12	-0.09
Top%	60	96	36	54	76	82	80	18	77	6	73	96	51	79	87

- Calving ease and low maintenance Cowboy Way son out of an outcross Canadian bred dam!

LOT		JEFFRIES COWBOY 517B													
34		1/1/2014    JLJ/517B    1A-100    #1677987													
RED LAZY MC COWBOY CUT 26U TJS COWBOY WAY Y423 TJS PRIDE T785  BIEBER WECOTA 10786 BIEBER KANNA 147U BIEBER KANNA 9623 MPPA: 100.4											Performance				
											BW	77			
											AWW	694			
											8/1 WT	1235			
											8/1 SC	34 cm			
											%IMF	3.66			
											REA	13			
	HBLD	GRID	CED	BW	WW	YW	MILK	ME	HPG	CEM	STAY	MB	YG	CW	REA
EPDs	96	48	2	-0.6	59	86	17	2	8	5	11	0.4	0	26	0.37
Top%	70	71	66	58	50	62	80	53	84	34	64	58	33	39	10



- A very well balanced, heavy muscled Cowboy Way son, 517B posted a 13.0 REA and 104 ratio! Maternally he stacks Trendsetter, Make Mimi and Canyon Hawk.



LOT 35		JEFFRIES COWBOY 597B													
		1/26/2014    JLJ/597B    1A-100    #1678058													
RED LAZY MC COWBOY CUT 26U TJS COWBOY WAY Y423 TJS PRIDE T785										Performance					
RED FINE LINE MULBERRY 26P JEFFRIES W577 JEFFRIES PR PRIDE 1207-P314 MPPA: 97.6										BW AWW 8/1 WT 8/1 SC %IMF REA		78 654 1275 36 cm 3.71 11.23			
	HBLD	GRID	CED	BW	WW	YW	MILK	ME	HPG	CEM	STAY	MB	YG	CW	REA
EPDs	130	49	3	-1.5	68	105	17	0	12	9	13	0.27	0.08	32	0.24
Top%	30	51	55	41	20	22	78	36	27	3	36	85	69	21	23

- 597B boasts a big birth to yearling spread, with a 78 BW, -1.5 BW EPD and 105 YW EPD. He stacks three of the breed's premier growth and type sires with Cowboy Cut, Mulberry and Gold Robber.



**JEFFRIES RED ANGUS - AGE ADVANTAGED 18 MONTH OLD BULLS**



## Herd Bull Prospect...



LOT 36		JEFFRIES TRAILHEAD 506A													
		12/30/2013 JLJ/506A 1A-100 #1677972													
COLEY'S MOJITO 503R COLEY'S 503R TRAILBOSS 7170 MKM PRINCESS 3F  UBAR GOLD CAP 6017 JEFFRIES W584 LSF JLJ KYLA S439 MPPA: 102										Performance					
										BW	84				
										AWW	762				
										8/1 WT	1505				
										8/1 SC	37 cm				
										%IMF	3.59				
										REA	10.13				
	HLD	GRD	CED	BW	WW	YW	MILK	ME	HPG	CEM	STAY	MB	YG	CW	REA
EPDs	79	48	4	-0.2	63	100	18	0	11	5	7	0.32	0.19	27	-0.18
Top%	87	69	45	66	36	32	76	41	46	34	93	77	95	35	96

- If you are looking for extra length and performance, check out this powerhouse! Trailhead 506A is one of the stoutest bulls in the offering.

- His sire, Coley's 503R Trailboss 7170, is one of the breed's top Mojito sons. He himself posted an impressive 17.37 REA and his progeny have a 105 REA ratio average.

- His dam, Jeffries W584, has been cruising along with a 102 AWR and

104 AYR with only a 96 ABR on four calves. She is a granddaughter of BJR High Capacity 224, out of a top producing Grand Canyon dam.

- Selling 1/2 interest and full possession.



# JEFFRIES RED ANGUS - AGE ADVANTAGED 18 MONTH OLD BULLS

**Lead the pack with these powerful Trailboss sons...**

*Lot 37... he is a lot of bull for a 78 BW!*



LOT	JEFFRIES TRAILBOSS 524B														
37	1/2/2014 JLJ/524B 1A-100 #1677994														
COLEY'S MOJITO 503R COLEY'S 503R TRAILBOSS 7170 MKM PRINCESS 3F  RED DMM BRYLOR THUMP 2T 3J MS BETHANY X504 BUF CRK AMBER M096 MPPA: 102.3										Performance					
										BW	78				
										AWW	770				
										8/1 WT	1455				
										8/1 SC	38 cm				
										%IMF	3.42				
										REA	11.34				
	BOLD	GRID	CED	BW	WW	YW	MILK	ME	HPG	CEM	STAY	MB	YG	CW	REA
EPDs	92	48	4	-0.7	59	92	19	-1	10	5	9	0.25	0.13	26	-0.19
Top%	74	77	45	56	52	49	62	35	52	34	82	87	86	38	96

*- 524B is a top performer, posting a 770 AWW, 107 WR and 104 YR with only a 78 BW!*

*- His dam is a daughter of Thump, the Rob Roy son out of the famed Essence 42G cow in Canada, and maternally stems from the famed Buf Crk Amber cow.*



LOT	JEFFRIES TRAILBOSS 490A														
38	12/27/2013 JLJ/490A 1A-100 #1677956														
COLEY'S MOJITO 503R COLEY'S 503R TRAILBOSS 7170 MKM PRINCESS 3F  RED SIX MILE SAKIC 832S JEFFRIES W555 MS ADVANCER OF 4L R28P MPPA: 96										Performance					
										BW	88				
										AWW	691				
										8/1 WT	1440				
										8/1 SC	35.5 cm				
										%IMF	3.53				
										REA	13.08				
	BOLD	GRID	CED	BW	WW	YW	MILK	ME	HPG	CEM	STAY	MB	YG	CW	REA
EPDs	65	47	-1	3	67	105	17	5	8	8	8	0.07	0.08	35	0.08
Top%	94	93	90	99	22	22	78	81	85	6	87	99	69	14	52

*- Moderate and loaded with muscle, Trailboss 490A posted a 13.08 REA with a 107 ratio!*

*- His dam is a Sakic daughter out of our longtime donor, Ms Advancer of 4L R28P.*





**JEFFRIES RED ANGUS - AGE ADVANTAGED 18 MONTH OLD BULLS**



## Herd Bull Prospect...



LOT 39	JEFFRIES HOT PURSUIT 478A															
	12/23/2013 JLJ/478A 1A-100 #1677944															
RED CINDER PURSUIT 101S RED LONE STONE PURSUIT 81W RED LONE STONE MISS INDEED 6  RED KBJ RAINMAKER 963N RED KBJ LADY ROSETTE 876R RED KBJ LADY ROSETTE 924M MPPA: 100.5										Performance						
										BW AWW 8/1 WT 8/1 SC %IMF REA		75 768 1605 43 cm 4.66 11.5				
	BBLD	GRID	CED	BW	WW	YW	MILK	ME	HPG	CEM	STAY	MB	YG	CW	REA	
EPDs	88	48	1	-0.2	57	89	11	-10	10	5	7	0.31	0.09	26	0.06	
Top%	78	74	76	66	60	54	97	3	53	34	92	79	73	38	57	

*- Hot Pursuit 478A could be the best son of Lone Stone Pursuit 81W to date. He has all the right parts in all the right places, posting a record of: 75 BW, 94 BR, 108 WR, 112 YR and 121 IMF ratio!*

*- His dam, Lady Rosette 876R, has been one of the most steady producing females in the herd, with a 100 AWR, 100 AYR and 102 IMF average on eight calves. She stacks breed legends, Rain-*

*maker, Premier Patriot 16, and CV Four Times.*

*- Selling 1/2 interest and full possession.*



**Check out the records on these powerhouse Pursuit sons!**

LOT 40		JEFFRIES PURSUIT 520B													
		1/1/2014    JLJ/520B    1A-100    #1677990													
RED CINDER PURSUIT 101S RED LONE STONE PURSUIT 81W RED LONE STONE MISS INDEED 6  BASIN DATELINE 5955 BR BASIN CENTURIA 8609 BASIN CENTURIA 6313 MPPA: 101.8										Performance					
										BW AWW 8/1 WT 8/1 SC %IMF REA		78 770 1400 43 cm 4.33 12.58			
	HBLD	GRID	CED	BW	WW	YW	MILK	ME	HPG	CEM	STAY	MB	YG	CW	REA
EPDs	109	48	4	-0.6	70	98	12	-6	9	7	10	0.33	-0.02	30	0.3
Top%	54	66	45	58	15	36	97	9	69	12	75	75	25	26	16



- Perfect record: 78 BW, 107 WR, 103 YR, 111 IMF and 101 REA! Pursuit 520B is out of a 101.8 MPPA Basin bred dam that stacks Dateline, Trendsetter and Cherokee Cnyn.



**JLJ Bulls trying to stay cool this summer!**

- Another big record Pursuit son, 530B posted indexes of: 108 WR, 104 YR, 114 IMF and 107 REA! His dam is royally bred, stacking EXT 5233, Logan 210 and Hobo 79E going back to the famed Primrose 258 cow.

LOT		JEFFRIES PURSUIT 530B													
41		1/4/2014 JLJ/530B 1A-100 #1677976													
RED CINDER PURSUIT 101S RED LONE STONE PURSUIT 81W RED LONE STONE MISS INDEED 6  BASIN EXT 5233 BASIN ROSE 8325 BASIN ROSE 3138 MPPA: 102.4										Performance					
										BW			78		
										AWW			782		
										8/1 WT			1400		
										8/1 SC			43 cm		
%IMF			4.44												
REA			13.37												
	BLD	GRD	CED	BW	WW	YW	MILK	ME	HPG	CEM	STAY	MB	YG	CW	REA
EPDs	126	49	4	-1	74	106	13	-6	10	9	11	0.34	0.04	34	0.35
Top%	34	54	45	50	8	20	95	9	65	3	64	73	51	15	12



LOT 42		JEFFRIES PURSUIT 486A													
		12/26/2013 JLJ/486A 1A-100 #1677952													
RED CINDER PURSUIT 101S RED LONE STONE PURSUIT 81W RED LONE STONE MISS INDEED 6  BASIN SALUTE R060 BASIN ROSE 8165 BASIN ROSE L185 MPPA: 102.2										Performance					
										BW			72		
										AWW			787		
										8/1 WT			1380		
										8/1 SC			42 cm		
%IMF			3.72												
REA			12.75												
	BLD	GRD	CED	BW	WW	YW	MILK	ME	HPG	CEM	STAY	MB	YG	CW	REA
EPDs	100	49	3	-0.9	64	99	10	-6	9	8	8	0.29	0.04	31	0.12
Top%	65	56	55	52	31	33	98	11	82	6	85	82	51	24	44

- 72 BW on this 111 WR and 107 YR Pursuit son! 486A posted a 105 REA ratio too!



**JEFFRIES RED ANGUS - AGE ADVANTAGED 18 MONTH OLD BULLS**



## A second draft of powerful Rollin Deep sons!



LOT 43		JEFFRIES ROLLIN 539B														
		1/7/2014 JLJ/539B 1A-100 #1678005														
		BIEBER ROOSEVELT W384 BIEBER ROLLIN DEEP Y118 BIEBER TILLY 399W  BASIN CHEROKEE 5856 BASIN BONNEBELL 8564 BASIN BONNEBELL 5018 BR MPPA: 103.3										Performance				
												BW AWW 8/1 WT 8/1 SC %IMF REA		96 796 1440 40 cm 4.71 14.19		
		HB	GR	CE	BW	WW	YW	MILK	ME	HPG	CEM	STAY	MB	YG	CW	REA
EPDs		103	51	5	2.9	81	132	23	4	11	3	10	0.74	0.16	47	0.4
Top%		62	13	36	98	2	2	26	75	34	67	65	9	92	2	9

- Loaded with performance and carcass, 539B posted a record of: 110 WR, 116 YR, 121 IMF and 114 REA! His maternal sister is a featured 'halterbroke' heifer selling as Lot 97.

LOT 44		JEFFRIES ROLLIN 499A															
		12/29/2013 JLJ/499A 1A-100 #1677965															
		BIEBER ROOSEVELT W384 BIEBER ROLLIN DEEP Y118 BIEBER TILLY 399W  BASIN EXT 8926 JEFFIES MS DIXIE Y947 MS ADVANCER OF 4L RM37 MPPA: 102										Performance					
												BW AWW 8/1 WT 8/1 SC %IMF REA		95 737 1365 41 cm 3.87 11.64			
		IBLD	GRID	CED	BW	WW	YW	MILK	ME	HPG	CEM	STAY	MB	YG	CW	REA	
EPDs		72	50	3	3.1	82	131	25	8	10	2	8	0.44	0.14	53	0.4	
Top%		91	37	55	99	2	2	17	97	56	80	86	49	88	1	9	



- Another top performer, 499A boasts indexes of 105 WR and 104 YR. His 103.1 MPPA dam is also the donor dam of Jeffries Braveheart 580B, the powerhouse herd bull prospect selling as Lot 14.

## Scenes from the sale...



# JEFFRIES RED ANGUS - AGE ADVANTAGED 18 MONTH OLD BULLS

## Three moderate, carcass loaded Rollin Deep sons!



LOT 45	JEFFRIES ROLLIN 538B														
	1/7/2014 JLJ/538B 1A-100 #1678004														
BIEBER ROOSEVELT W384 BIEBER ROLLIN DEEP Y118 BIEBER TILLY 399W  MESSMER PACKER S008 JEFFRIES MS CLARE X623 RED KBJ LADY 966T MPPA: 97.7										Performance					
										BW AWW 8/1 WT 8/1 SC %IMF REA		90 673 1300 38.5 cm 3.41 12.84			
	HB	GR	CE	BW	WW	YW	MILK	ME	HPG	CEM	STAY	MB	YG	CW	REA
EPDs	99	50	4	0.9	69	110	21	0	9	5	10	0.47	0.02	35	0.49
Top%	66	33	45	85	17	14	52	42	72	34	74	43	42	14	5

- This moderate dark red stud really ripples with muscle! He combines two breed greats with his sire, Rollin Deep, and his maternal grandsire, Messmer Packer S008. Lot 46 is a 3/4 brother.

LOT 46		JEFFRIES ROLLIN 543B														
		1/8/2014    JLJ/543B    1A-100    #1678009														
BIEBER ROOSEVELT W384 BIEBER ROLLIN DEEP Y118 BIEBER TILLY 399W  MESSMER PACKER S008 JEFFRIES MS WILMA X652 JEFF K29 N232 MPPA: 93.6											Performance					
											BW AWW 8/1 WT 8/1 SC %IMF REA		95 609 1370 40.5 cm 4.15 12.58			
	HB	GR	CE	BW	WW	YW	MILK	ME	HPG	CEM	STAY	MB	YG	CW	REA	
EPDs	77	50	3	2.1	69	113	20	3	12	4	7	0.58	0.01	39	0.65	
Top%	88	24	55	96	18	10	53	69	24	51	93	23	38	8	2	



- This thick made, easy doing Rollin Deep son posted a nice carcass scan with indexes of 106 IMF and 101 REA! His dam stacks Packer with Bandito Tres and King Rob.

LOT 47	JEFFRIES ROLLIN 583B														
	1/23/2014    JLJ/583B    1A-100    #1678044														
BIEBER ROOSEVELT W384 BIEBER ROLLIN DEEP Y118 BIEBER TILLY 399W  LORENZEN CATALYST 6454 JEFFRIES W589 LSF JLJ KARI S409 MPPA: 100.4										Performance					
										BW		77			
										AWW		690			
										8/1 WT		1220			
										8/1 SC		42 cm			
										%IMF		3.65			
										REA		11.7			
	HB	GR	CE	BW	WW	YW	MILK	ME	HPG	CEM	STAY	MB	YG	CW	REA
EPDs	97	50	5	-1.7	66	109	24	5	10	6	9	0.46	0.17	34	0.27
Top%	69	26	36	37	25	16	21	81	49	21	81	45	93	16	19



JLJ Bulls are managed on grass from June until sale time!

- Great heifer bull prospect... 583B posted a 103 WR, 103 YR and 103 REA ratio with only a 77 BW! His dam stacks many breed greats, including Marias, Gold Robber, Above Heaven & Red Top.



# JEFFRIES RED ANGUS - AGE ADVANTAGED 18 MONTH OLD BULLS

## Calving ease Oly 903 sons!



LOT 48		JEFFRIES 903-535B													
		1/5/2014 JLJ/535B 1A-100 #1678001													
RED SSS OLY 554T VGW OLY 903 VGW TM-DORA 0758  SIX MILE WILD WEST 0913W JEFFRIES MS DAY Z06 4L MS R903 CUB R34N MPPA: 99.6										Performance					
										BW	71				
										AWW	700				
										8/1 WT	1200				
										8/1 SC	34 cm				
										%IMF	4.58				
										REA	9.87				
	BLD	GRID	CED	BW	WW	YW	MILK	ME	HPG	CEM	STAY	MB	YG	CW	REA
EPDs	96	50	0	-4.1	57	92	17	2	10	6	10	0.4	0.12	24	-0.07
Top%	69	28	84	9	60	48	77	52	56	21	75	58	83	44	84

- A moderate, masculine, little man, 535B ranks in the top 9% of the breed with a -4.1 BW EPD, and he posted a 106 IMF ratio!

LOT 49		JEFFRIES 903-495A													
		12/28/2013 JLJ/495A 1A-100 #1677961													
RED SSS OLY 554T VGW OLY 903 VGW TM-DORA 0758  RED HIPS EL GRANDE 9R RED KBJ MISTY 944U RED KBJ MISTY 408H MPPA: 91.8										Performance					
										BW	79				
										AWW	678				
										8/1 WT	1380				
										8/1 SC	38 cm				
										%IMF	3.59				
										REA	10.29				
	BLD	GRID	CED	BW	WW	YW	MILK	ME	HPG	CEM	STAY	MB	YG	CW	REA
EPDs	85	49	-1	-2	57	91	12	1	9	5	9	0.28	0.05	18	-0.12
Top%	81	56	90	32	57	51	96	45	80	34	79	84	56	64	91

- 1380 lbs. Heifer bull with a 79 BW and -2 BW EPD!

LOT 50		JEFFRIES 903-505A													
		12/30/2013 JLJ/505A 1A-100 #1677971													
RED SSS OLY 554T VGW OLY 903 VGW TM-DORA 0758  LORENZEN CATALYST 6454 JEFFRIES W596 MS 12L HIGH MARK OF 4L R84P MPPA: 95.7										Performance					
										BW	73				
										AWW	586				
										8/1 WT	1235				
										8/1 SC	38 cm				
										%IMF	3.89				
										REA	11.01				
	BLD	GRID	CED	BW	WW	YW	MILK	ME	HPG	CEM	STAY	MB	YG	CW	REA
EPDs	112	51	4	-5.3	47	84	14	4	10	8	10	0.33	-0.02	12	0.01
Top%	50	16	45	3	86	65	91	74	65	6	65	75	25	80	68

- This -5.3 BW heifer bull is moderate, dark red and stout! He ranks in the top 3% of the breed for BW EPD!



# JEFFRIES RED ANGUS - AGE ADVANTAGED 18 MONTH OLD BULLS

## Heifer bulls sired by Hughes W109!

LOT 51		JEFFRIES HUGHES 559B													
		1/14/2014    JLJ/559B    1A-100    #1678022													
BASIN HOBO 0545 <b>BIEBER H HUGHES W109</b> BASIN ROSE 06T0  RED GOLD-BAR RIP ET ML 116R <b>RED GOLD-BAR FIRST LADY R 11</b> RED GOLD-BAR FIRST LADY 214R MPPA: 99.1										<i>Performance</i>					
										<b>BW</b>		65			
										<b>AWW</b>		696			
										<b>8/1 WT</b>		1280			
										<b>8/1 SC</b>		41.5 cm			
										<b>%IMF</b>		5.31			
										<b>REA</b>		11.7			
	HBLD	GRID	CED	BW	WW	YW	MILK	ME	HPG	CEM	STAY	MB	YG	CW	REA
EPDs	148	50	4	-4.8	57	79	18	-6	13	2	14	0.60	0.04	8	0.04
Top%	15	34	45	5	60	75	73	10	11	51	80	21	21	51	86



- Unreal record: 65 BW, 104 WR, 104 YR, 134 IMF and 103 REA! 559B ranks in the top 5% for BW, the top 10% for ME and the top 11% for HPG!



LOT 52		JEFFRIES HUGHES 616B													
		1/31/2014    JLJ/616B    1A-100    #1678086													
BASIN HOBO 0545  <b>BIEBER H HUGHES W109</b>  BASIN ROSE 06T0    SIX MILE WILD WEST 0913W  <b>JEFFRIES MS WHET Y965</b>  JEFFRIES WHET U489  MPPA: 111.2										Performance					
										BW			79		
										AWW			856		
										8/1 WT			1285		
										8/1 SC			36 cm		
%IMF			3.63												
REA			12.05												
	IBBL	GRID	CED	BW	WW	YW	MILK	ME	HPG	CEM	STAY	MB	YG	CW	REA
EPDs	161	48	3	-0.5	75	100	21	-4	14	5	16	0.4	0.12	30	0.19
Top%	8	79	55	60	7	31	43	18	5	34	8	58	83	26	31

- Huge 856 AWW and 128 WR, with a 115 YR, 106 REA ratio, and only a 79 BW! His dam is one of the top young Wild West females in the herd, earning a 111.2 MPPA.

LOT 53		JEFFRIES HUGHES 567B														
		1/18/2014   JLJ/567B   1A-100   #1678029														
BASIN HOBO 0545  <b>BIEBER H HUGHES W109</b>  BASIN ROSE 06T0    LORENZEN CATALYST 6454  <b>JEFFRIES MS KYLO Y791</b>  JEFFRIES REBELLA T468  MPPA: 102.4										Performance						
										BW			71			
										AWW			710			
										8/1 WT			1210			
										8/1 SC			36 cm			
%IMF			4													
REA			11.87													
		EBLD	GRID	CED	BW	WW	YW	MILK	ME	HPG	CEM	STAY	MB	YG	CW	REA
EPDs	151	50	4	-3.4	72	106	16	1	11	5	15	0.45	0.11	29	0.13	
Top%	13	27	45	14	11	20	87	47	32	34	15	47	80	29	42	



- Another great record bull, 567B has one of the best EPD spreads in the offering! He posted indexes of: 106 WR, 104 YR, 101 IMF and 104 REA with only a 71 BW!



# JEFFRIES RED ANGUS - AGE ADVANTAGED 18 MONTH OLD BULLS



## More sons of TJS Cowboy Way Y423...

LOT	JEFFRIES COWBOY 667B														
54	2/21/2014 JLJ/667B 1A-100 #1678126														
RED LAZY MC COWBOY CUT 26U TJS COWBOY WAY Y423 TJS PRIDE T785  RED SIX MILE UTAH 455U C-BAR BONNIE BELLE X29 TLS BONNE BELLE T701 MPPA: 108										Performance					
										BW	60				
										AWW	714				
										8/1 WT	1170				
										8/1 SC	37.5 cm				
										%IMF	4.36				
										REA	10.85				
	BLD	GRID	CED	BW	WW	YW	MILK	ME	HPG	CEM	STAY	MB	YG	CW	REA
EPDs	127	50	7	-5.9	58	90	22	-5	8	10	10	0.23	0.03	18	0.1
Top%	33	30	21	2	56	54	41	14	88	2	67	89	47	64	48



- 667B posted a 107 WR, 106 YR and 110 IMF ratio with only a 60 BW! Calving ease bull with carcass... his dam has three calves now with a record of: 112 AWR, 110 AYR and 110 IMF average ratio!



LOT	JEFFRIES COWBOY 621B														
55	2/2/2014 JLJ/621B 1A-100 #1678079														
RED LAZY MC COWBOY CUT 26U TJS COWBOY WAY Y423 TJS PRIDE T785  COLEY'S 503R TRAILBOSS 7170 JEFFRIES W585 JRSF RACHEL 702N MPPA: 100.3										Performance					
										BW	81				
										AWW	685				
										8/1 WT	1065				
										8/1 SC	35 cm				
										%IMF	3.95				
										REA	12.38				
	BLD	GRID	CED	BW	WW	YW	MILK	ME	HPG	CEM	STAY	MB	YG	CW	REA
EPDs	118	50	5	-1.4	60	95	18	-6	10	6	10	0.36	0.01	23	0.21
Top%	42	42	36	43	47	41	74	11	64	21	66	68	38	48	28

- Another positive record calving ease bull with ratios of: 102 WR, 104 YR, 100 IMF and 109 REA.

LOT	JEFFRIES COWBOY 677B														
56	2/25/2014 JLJ/677B 1A-100 #1678136														
RED LAZY MC COWBOY CUT 26U TJS COWBOY WAY Y423 TJS PRIDE T785  RED SIX MILE TRUMP TOWER 233 SIX MILE FANNY 854W RED SIX MILE FANNY 186T MPPA: 98.8										Performance					
										BW	83				
										AWW	649				
										8/1 WT	1100				
										8/1 SC	36 cm				
										%IMF	3.4				
										REA	12.14				
	BLD	GRID	CED	BW	WW	YW	MILK	ME	HPG	CEM	STAY	MB	YG	CW	REA
EPDs	112	48	5	-0.6	54	83	18	-10	9	6	10	0.18	-0.02	17	0.25
Top%	50	80	36	58	70	67	71	3	80	21	71	93	25	67	22



- Like peas in a pod, these Cowboy Way sons are low birth, moderate bulls with great muscle shape. 667B posted a 107 REA ratio.



**More sons of TJS Cowboy Way Y423...**

LOT	<b>JEFFRIES COWBOY 500A</b>														
57	12/29/2013 JLJ/500A 1A-100 #1677966														
RED LAZY MC COWBOY CUT 26U <b>TJS COWBOY WAY Y423</b> TJS PRIDE T785  LOOSLI NEW DEAL 503 <b>BIEBER CLEMENCY 115U</b> BIEBER CLEMENCY 265S MPPA: 95.6										<b>Performance</b>					
										<b>BW</b>	79				
										<b>AWW</b>	704				
										<b>8/1 WT</b>	1160				
										<b>8/1 SC</b>	36 cm				
										<b>%IMF</b>	3.87				
										<b>REA</b>	11.97				
	HRD	GRID	CED	BW	WW	YW	MILK	ME	HPG	CEM	STAY	MB	YG	CW	REA
EPDs	119	48	6	-1.5	60	83	20	-2	11	4	12	0.37	0	16	0.27
Top%	41	73	28	41	48	66	54	27	47	51	44	66	33	70	19



**- Big EPD spread on this 79 BW heifer bull... 500A posted a 704 AWW!**



LOT	<b>JEFFRIES COWBOY 579B</b>														
58	1/21/2014 JLJ/579B 1A-100 #1678040														
RED LAZY MC COWBOY CUT 26U <b>TJS COWBOY WAY Y423</b> TJS PRIDE T785  RED SIX MILE SAKIC 832S <b>SIX MILE FANNY 837W</b> RED SIX MILE FANNY T 151H MPPA: 92.4										<b>Performance</b>					
										<b>BW</b>	75				
										<b>AWW</b>	605				
										<b>8/1 WT</b>	1085				
										<b>8/1 SC</b>	36 cm				
										<b>%IMF</b>	3.62				
										<b>REA</b>	11.3				
	HRD	GRID	CED	BW	WW	YW	MILK	ME	HPG	CEM	STAY	MB	YG	CW	REA
EPDs	115	48	5	-2.6	51	79	18	-4	8	10	10	0.14	0.03	12	0.01
Top%	46	77	36	23	78	73	71	17	86	2	65	95	47	81	68

**- Moderate and stout, 579B boasts a 75 BW, -2.6 BW EPD, and a 10 CEM which ranks him in the top 2% of the breed!**

LOT	<b>JEFFRIES PURSUIT 491A</b>														
59	12/27/2013 JLJ/491A 1A-100 #1677957														
RED CINDER PURSUIT 101S <b>RED LONE STONE PURSUIT 81W</b> RED LONE STONE MISS INDEED 6  RED GOLD-BAR RIP ET ML 116R <b>RED GOLD-BAR LACIER 1181U</b> RED GOLD-BAR LACIE H 206P MPPA: 99.5										<b>Performance</b>					
										<b>BW</b>	90				
										<b>AWW</b>	783				
										<b>8/1 WT</b>	1385				
										<b>8/1 SC</b>	43 cm				
										<b>%IMF</b>	2.95				
										<b>REA</b>	14.17				
	HRD	GRID	CED	BW	WW	YW	MILK	ME	HPG	CEM	STAY	MB	YG	CW	REA
EPDs	108	46	2	2.6	74	102	8	-15	8	5	10	0.02	-0.02	32	0.26
Top%	56	97	66	98	8	26	99	1	88	34	72	99	25	21	21



**- 491A leads off another draft of performance packed, heavy muscled Pursuit sons and grandsons. He posted an awesome record of: 110 WR, 111 YR, and 116 REA ratio with 43cm testicles!**



# JEFFRIES RED ANGUS - AGE ADVANTAGED 18 MONTH OLD BULLS

**Lots 59-67... for extra performance and muscle!**

LOT 60		JEFFRIES PURSUIT 494A													
		12/28/2013 JLJ/494A 1A-100 #1677960													
RED CINDER PURSUIT 101S RED LONE STONE PURSUIT 81W RED LONE STONE MISS INDEED 6  BASIN EXT 8141 JEFFRIES MS GOLDIE X705 RED GOLD-BAR GOLDIE NO 204R MPPA: 106.6										Performance					
										BW			94		
										AWW			865		
										8/1 WT			1390		
										8/1 SC			41 cm		
										%IMF			3.62		
										REA			11.36		
	EBL	GRD	CED	BW	WW	YW	MILK	ME	HPG	CEM	STAY	MB	YG	CW	REA
EPDs	103	46	3	3.8	84	115	13	-8	8	7	9	0.21	0.09	41	0.23
Top%	62	95	55	99	1	9	95	5	83	12	76	91	73	6	25

- Huge 865 AWW, 122 WR and 110 YR! His maternal sister is featured as Lot 93.

LOT 61		JEFFRIES GOLD CUP A473													
		12/22/2013 JLJ/A473 1A-100 #1677941													
RED CINDER PURSUIT 101S RED LONE STONE PURSUIT 81W RED LONE STONE MISS INDEED 6  BASIN EXT 8926 JEFFRIES MS GOLD CAP X665 JEFFRIES GOLD CAP 505U MPPA: 102.4										Performance					
										BW			82		
										AWW			741		
										8/1 WT			1465		
										8/1 SC			39.5 cm		
%IMF			3.19												
REA			14.25												
	EBL	GRD	CED	BW	WW	YW	MILK	ME	HPG	CEM	STAY	MB	YG	CW	REA
EPDs	94	49	5	0.4	78	120	7	-1	9	6	8	0.19	0.04	41	0.3
Top%	73	52	36	77	4	5	99	30	80	21	91	92	51	6	16

- Posted a 104 WR, 109 YR and huge 14.25 REA with a 117 ratio!

LOT 62		JEFFRIES PURSUIT 477A													
		12/23/2013 JLJ/477A 1A-100 #1677943													
RED CINDER PURSUIT 101S RED LONE STONE PURSUIT 81W RED LONE STONE MISS INDEED 6  UBAR GOLD CAP 6017 JEFFRIES U495 JEFFRIES J1394-P257 MPPA: 104.7										Performance					
										BW				88	
										AWW				714	
										8/1 WT				1430	
										8/1 SC				43 cm	
%IMF				3.92											
REA				11.82											
	EBL	GRD	CED	BW	WW	YW	MILK	ME	HPG	CEM	STAY	MB	YG	CW	REA
EPDs	86	48	3	1.3	75	107	6	-8	8	4	7	0.4	0.08	35	0.3
Top%	80	71	55	89	6	18	99	5	84	51	92	58	69	14	16

- Stout made Pursuit son out of one of the top females in the herd... his dam is a 104.7 MPPA matron that stacks Marias, Cherokee Cyn and Robin Hood!

LOT 63		JEFFRIES PURSUIT 487A													
		12/26/2013 JLJ/487A 1A-100 #1677953													
RED CINDER PURSUIT 101S RED LONE STONE PURSUIT 81W RED LONE STONE MISS INDEED 6  BIEBER BOONE 8000 BIEBER MINOLA 206U OLC MINOLA N443 MPPA: 101.6										Performance					
										BW			85		
										AWW			764		
										8/1 WT			1345		
										8/1 SC			37 cm		
%IMF			3.67												
REA			13.34												
	EBL	GRD	CED	BW	WW	YW	MILK	ME	HPG	CEM	STAY	MB	YG	CW	REA
EPDs	60	47	2	1.2	79	106	9	-2	6	5	6	0.28	0.02	34	0.24
Top%	96	85	66	88	3	20	99	28	94	34	97	84	42	17	23

- Powerful 764 AWW with a 107 WR, and a 13.34 REA with a 109 ratio!



# EFFRIES RED ANGUS - AGE ADVANTAGED 18 MONTH OLD BULLS

**More Pursuit sons for added performance and muscle!**



LOT 64		JEFFRIES PURSUIT 540B													
		1/8/2014    JLJ/540B    1A-100    #1678006													
RED CINDER PURSUIT 101S RED LONE STONE PURSUIT 81W RED LONE STONE MISS INDEED 6  RED SIX MILE PRICELESS 268P SIX MILE GLORIA 125T RED KORAN GLORIA 117K 349 MPPA: 91.3										Performance					
										BW			87		
										AWW			701		
										8/1 WT			1320		
										8/1 SC			40 cm		
%IMF			3.44												
REA			12.18												
	HLD	GRD	CED	BW	WW	YW	MILK	ME	HPG	CEM	STAY	MB	YG	CW	REA
EPDs	95	46	1	2.2	67	92	8	-8	11	5	9	0.13	0.01	29	0.11
Top%	71	97	76	96	22	48	99	5	49	34	80	95	38	29	46

- Extra length and frame here, 540B is a maternal brother to the dam of Lot 1!

LOT		JEFFRIES 33Z-658B													
65		2/14/2014 JLJ/658B 1A-100 #1678117													
RED LONE STONE PURSUIT 81W JEFFRIES PURSUIT 33Z BIEBER PENELOPE 126U  RED SIX MILE SAKIC 832S C-BAR ABIGRACE X40 BROWN C- A502M ABIGRACE R544 MPPA: 100										Performance					
										BW AWW 8/1 WT 8/1 SC %IMF REA		65 654 1230 36.5 cm 4.03 11.65			
	HBLD	GRID	CED	BW	WW	YW	MILK	ME	HPG	CEM	STAY	MB	YG	CW	REA
EPDs	108	50	3	-4	68	102	19	3	9	9	10	0.33	0.05	25	0.17
Top%	56	29	55	9	19	28	66	64	78	3	69	75	56	41	34



--4.0 BW heifer bull from the famed Abigrace cow family that has produced more \$\$\$\$ in this breed than any other tribe!

LOT 66		JEFFRIES 33Z-626B													
		2/3/2014 JLJ/626B 1A-100 #1678084													
RED LONE STONE PURSUIT 81W JEFFRIES PURSUIT 33Z BIEBER PENELOPE 126U  LSF JBOB EXPECTATION 6034S JEFFRIES MS PRIMROSE X667 BASIN PRIMROSE 8216 MPPA: 106.7										Performance					
										BW AWW 8/1 WT 8/1 SC %IMF REA		72 689 1170 35.5 cm 4.54 9.98			
	BLD	GRD	CED	BW	WW	YW	MILK	ME	HPG	CEM	STAY	MB	YG	CW	REA
EPDs	129	52	5	-2.6	72	116	19	3	9	7	12	0.55	0.14	37	0.19
Top%	30	10	36	23	11	8	68	65	68	12	47	28	88	11	31



- Check out the EPD spread on this heifer bull! From the famed Primrose cow family, 626B posted a 103 WR, 105 YR and 115 IMF ratio!



# JEFFRIES RED ANGUS - AGE ADVANTAGED 18 MONTH OLD BULLS



LOT 67		JEFFRIES 33Z-614B													
		1/31/2014    JLJ/614B    1A-100    #1678074													
RED LONE STONE PURSUIT 81W JEFFRIES PURSUIT 33Z BIEBER PENELOPE 126U  LEACHMAN END CUT 1383G SIX MILE PRECIOUS 8W RED JEWEL PRECIOUS 25P MPPA: 98.5										Performance					
										BW AWW 8/1 WT 8/1 SC %IMF REA			82 586 1200 37 cm 3.6 9.96		
	EBL	GRID	CED	BW	WW	YW	MILK	ME	HPG	CEM	STAY	MB	YG	CW	REA
EPDs	97	47	5	-0.7	53	80	15	-6	6	7	9	0.18	0.07	17	-0.03
Top%	69	90	36	56	71	72	89	9	95	12	81	93	65	68	75

- A very attractive, clean made heifer bull, 614B stacks None Heavier and Grand Canyon in his maternal tabulation!

## Lots 68-72... sons out outcross sire, Six Mile Intrigue 348X!



Lot 68's maternal sister by Oly 903 is featured as Lot 92!



LOT 68		JEFFRIES 348X-610B													
		1/29/2014    JLJ/610B    1A-100    #1678070													
PEAK DOT PREDOMINANT 135S RED SIX MILE INTRIGUE 348X RED SIX MILE MINERVA 681R  BASIN CHEROKEE 5856 BASIN LAURA 8524 BASIN LAURA 5046 MPPA: 104.7										Performance					
										BW			89		
										AWW			741		
										8/1 WT			1250		
										8/1 SC			38 cm		
%IMF			5.23												
REA			9.81												
	EBL	GRID	CED	BW	WW	YW	MILK	ME	HPG	CEM	STAY	MB	YG	CW	REA
EPDs	86	48	3	2	69	97	12	-4	10	4	8	0.59	0.14	34	-0.03
Top%	80	78	55	95	18	38	96	18	58	51	87	22	88	15	75

- 610B leads off a great sire group by Intrigue 348X! He posted an impressive 111 WR and 132 IMF ratio!  
- His dam is a 104.7 MPPA Cherokee Cnyn grand-daughter going back to a Basin Max x Logan 210 foundation. She is also the dam of one of our featured 'halterbroke' females selling as Lot 92!



# EFFRIES RED ANGUS - AGE ADVANTAGED 18 MONTH OLD BULLS

**Lots 68-72... sons out outcross sire, Six Mile Intrigue 348X!**



LOT 69		JEFFRIES INTRIGUE 649B													
		2/12/2014 JLJ/649B 1A-100 #1678108													
PEAK DOT PREDOMINANT 135S RED SIX MILE INTRIGUE 348X RED SIX MILE MINERVA 681R  BASIN SALUTE R060 BASIN PRIDE 8025 BASIN PRIDE 0503 MPPA: 95.7										Performance					
										BW AWW 8/1 WT 8/1 SC %IMF REA		88 646 1230 38.5 cm 3.93 11.9			
	BLD	GRID	CED	BW	WW	YW	MILK	ME	HPG	CEM	STAY	MB	YG	CW	REA
EPDs	91	48	2	1.9	58	95	12	-5	9	6	8	0.43	0.07	29	0.05
Top%	76	67	66	94	53	41	97	12	70	21	87	52	65	27	59

- 649B is extra long and deep with very shapely testicles...his -5 ME ranks in the top 12% of the breed!

LOT 70		JEFFRIES 348X-588B													
		1/24/2014    JLJ/588B    1A-100    #1678049													
PEAK DOT PREDOMINANT 135S RED SIX MILE INTRIGUE 348X RED SIX MILE MINERVA 681R  RED SHODEREE DESTINY 114P SIX MILE MARTA 138T RED BAR-E-L MARTA 39H MPPA: 98										Performance					
										BW AWW 8/1 WT 8/1 SC %IMF REA		92 658 1150 37 cm 4.49 10.21			
	BLD	GRID	CED	BW	WW	YW	MILK	ME	HPG	CEM	STAY	MB	YG	CW	REA
EPDs	98	46	1	2.9	65	88	13	-10	9	6	10	0.35	0.07	28	0.1
Top%	67	97	76	98	31	57	95	3	78	21	75	71	65	31	48



- A maternal brother to Six Mile Integrity 691W, 588B posted a 113 IMF ratio!



LOT 71		JEFFRIES INTRIGUE 670B													
		2/21/2014    JLJ/670B    1A-100    #1678129													
PEAK DOT PREDOMINANT 135S RED SIX MILE INTRIGUE 348X RED SIX MILE MINERVA 681R  BASIN TREND SETTER 6074 BASIN RED QUEEN 8630 BASIN RED QUEEN 6114 MPPA: 99.8										Performance					
										BW AWW 8/1 WT 8/1 SC %IMF REA		79 658 1160 37 cm 4.04 12.16			
	BLD	GRID	CED	BW	WW	YW	MILK	ME	HPG	CEM	STAY	MB	YG	CW	REA
EPDs	92	49	4	-0.6	58	91	17	-7	11	6	7	0.41	-0.03	23	0.19
Top%	74	47	45	58	57	51	82	8	49	21	94	56	22	49	31

- Great carcass scan on this heifer bull... 670B posted a 102 IMF ratio and 107 REA ratio!



## JEFFRIES RED ANGUS - AGE ADVANTAGED 18 MONTH OLD BULLS



LOT 72	JEFFRIES INTRIGUE 669B														
	2/21/2014 JLJ/669B 1A-100 #1678128														
PEAK DOT PREDOMINANT 135S RED SIX MILE INTRIGUE 348X RED SIX MILE MINERVA 681R  BASIN SALUTE R060 BASIN ROSE 8321 BASIN ROSE 3345 MPPA: 98.3										Performance					
										BW AWW 8/1 WT 8/1 SC %IMF REA		77 614 1065 36 cm 3.43 11.27			
	HBLD	GRID	CED	BW	WW	YW	MILK	ME	HPG	CEM	STAY	MB	YG	CW	REA
EPDs	87	49	0	-0.2	51	88	16	-3	9	6	8	0.46	0.05	24	-0.09
Top%	79	45	84	66	77	56	83	19	70	21	86	45	56	44	87

- Another low birth Intrigue son, 669B posted a 77 BW with a 94 BR! He is out of an outcross dam sired by Basin Salute and goes back to a daughter of Glacier Marias 548.

## Lots 73-80... the influence of Six Mile Sakic 832S!

LOT 73		JEFFRIES 269X-594B														
		1/25/2014 JLJ/594B 1A-100 #1678055														
RED SIX MILE SAKIC 832S RED SIX MILE GRINGE 269X RED YY SUPERIOR 373M  RED SIX MILE MATADOR 817M RED KBJ LADY BIRD 896T RED DREAM MAKERS LADYBIRD 79 MPPA: 102.3											Performance					
											BW AWW 8/1 WT 8/1 SC %IMF REA		75 734 1395 36.5 cm 4.54 12.87			
	HBLD	GRID	CED	BW	WW	YW	MILK	ME	HPG	CEM	STAY	MB	YG	CW	REA	
EPDs	103	48	2	-0.9	57	81	23	-10	10	9	9	0.46	0.07	18	0.08	
Top%	61	78	66	52	58	72	32	3	58	3	82	45	65	65	52	



*Six Mile Sakic 832S... one of the most widely used bulls in the breed & a CEM leader!*

- Bigtime record on this 75 BW Gringe son... 594B posted indexes of: 110 WR, 105 YR, 115 IMF and 113 REA!



LOT 74	JEFFRIES 269X-602B															
	1/27/2014    JLJ/602B    1A-100    #1678062															
RED SIX MILE SAKIC 832S RED SIX MILE GRINGE 269X RED YY SUPERIOR 373M  RED BCAR WILD CARD RED KBJ MOLLY 1030T RED GOLD-BAR MOLLY RA 130N MPPA: 96.3										Performance						
										BW AWW 8/1 WT 8/1 SC %IMF REA		72 663 1370 35 cm 3.83 11.97				
	HBLD	GRID	CED	BW	WW	YW	MILK	ME	HPG	CEM	STAY	MB	YG	CW	REA	
EPDs	119	49	7	-3.3	54	86	16	-5	10	11	9	0.29	0.13	12	-0.08	
Top%	42	59	21	15	68	62	85	14	60	1	80	82	86	79	86	

- This good looking bull sports a -3.3 BW EPD, ranked in the top 15% of the breed and he also posted a 104 YR and 105 REA ratio!



# EFFRIES RED ANGUS - AGE ADVANTAGED 18 MONTH OLD BULLS

## More influence from Six Mile Sakic 832S...

LOT		JEFFRIES 269X-595B													
75		1/25/2014 JLJ/595B 1A-100 #1678056													
RED SIX MILE SAKIC 832S RED SIX MILE GRINGE 269X RED YY SUPERIOR 373M  BASIN EXT 5233 BASIN CHINOOK 8459 BASIN CHINOOK 08P6 MPPA: 105.5										Performance					
										BW AWW 8/1 WT 8/1 SC %IMF REA		73 689 1270 37 cm 3.83 11.66			
	HBLD	GRID	CED	BW	WW	YW	MILK	ME	HPG	CEM	STAY	MB	YG	CW	REA
EPDs	120	49	5	-2.8	62	95	27	6	11	11	11	0.29	0.18	26	0
Top%	40	61	36	21	39	42	9	91	32	1	52	82	95	39	70

- 103 WR and 103 REA ratio with only a 73 BW!

LOT		JEFFRIES GRINGE 636B													
76		2/7/2014 JLJ/636B 1A-100 #1678095													
RED SIX MILE SAKIC 832S RED SIX MILE GRINGE 269X RED YY SUPERIOR 373M  RED WILDMAN DENALI 19L SIX MILE EMPRESS 201T RED SIX MILE EMPRESS 592R MPPA: 109.8										Performance					
										BW		90			
										AWW		809			
										8/1 WT		1180			
										8/1 SC		37.5 cm			
										%IMF		3.38			
										REA		10.15			
	HBLD	GRID	CED	BW	WW	YW	MILK	ME	HPG	CEM	STAY	MB	YG	CW	REA
EPDs	95	45	4	1.5	69	88	22	-4	10	13	8	0.11	0.2	28	-0.31
Top%	71	99	45	91	17	57	35	18	59	1	86	96	96	32	99

- Unreal performance with a 809 AWW and 121 WR!  
He is out of our top producing Six Mile cow.

LOT 77		JEFFRIES 272-631B													
		2/5/2014 JLJ/631B 1A-100 #1678089													
RED SIX MILE SAKIC 832S JEFFRIES SAKIC 27Z BASIN BONNEBELL 8564  LORENZEN CATALYST 6454 JEFFRIES W606 MS ADVANCER OF 4L 106R MPPA: 86.9										Performance					
										BW AWW 8/1 WT 8/1 SC %IMF REA		83 651 1300 38 cm 3.47 9.12			
	HBLD	GRID	CED	BW	WW	YW	MILK	ME	HPG	CEM	STAY	MB	YG	CW	REA
EPDs	109	47	3	0.7	75	104	8	4	9	9	12	0.24	0.26	33	-0.3
Top%	54	94	55	82	7	23	99	71	74	3	46	89	99	19	99

- 631B leads off a set of four half brothers sired by Jeffries Sakic 27Z, the top son of Sakic 832S that we raised two seasons ago!



LOT 78		JEFFRIES 27Z-619B													
		2/1/2014 JLJ/619B 1A-100 #1678077													
RED SIX MILE SAKIC 832S JEFFRIES SAKIC 27Z BASIN BONNEBELL 8564										Performance					
RED SIX MILE MASTERMIND 490U C-BAR ABIGRACE X32 C-BAR & BROWN ABIGRACE T705 MPPA: 98.7										BW AWW 8/1 WT 8/1 SC %IMF REA		74 628 1245 35 cm 4.32 10.73			
	HOLD	GRID	CED	BW	WW	YW	MILK	ME	HPG	CEM	STAY	MB	YG	CW	REA
EPDs	115	50	1	-1.1	70	109	14	2	11	8	11	0.59	0.23	33	-0.1
Top%	46	30	76	49	16	15	93	60	38	6	52	22	98	19	93

- A little mud won't hurt this big spread heifer bull... and he comes from the famed Abigrace tribe!





# JEFFRIES RED ANGUS - AGE ADVANTAGED 18 MONTH OLD BULLS



LOT	JEFFRIES 27Z-617B														
79	1/31/2014 JLJ/617B 1A-100 #1678090														
RED SIX MILE SAKIC 832S JEFFRIES SAKIC 27Z BASIN BONNEBELL 8564  5L NORSEMAN KING 2291 SIX MILE CHRISTINE 686W RED SIX MILE CHRISTINE 230T MPPA: 98										Performance					
										BW	97				
										AWW	652				
										8/1 WT	1265				
										8/1 SC	37.5 cm				
										%IMF	3.74				
										REA	10.71				
	BLD	GRD	CED	BW	WW	YW	MILK	ME	HPG	CEM	STAY	MB	YG	CW	REA
EPDs	84	47	2	3.7	71	104	17	-1	8	5	9	0.31	0.16	34	-0.02
Top%	83	94	66	99	12	23	82	34	83	34	76	79	92	17	73

- Top 12% WW EPD and top 17% CW EPD!

LOT	JEFFRIES 27Z-653B														
80	2/13/2014 JLJ/653B 1A-100 #1678112														
RED SIX MILE SAKIC 832S JEFFRIES SAKIC 27Z BASIN BONNEBELL 8564  MESSMER PACKER S008 JEFFRIES GOLD RIB X654 TPIE GOLDRIB 439 MPPA: 98										Performance					
										BW	84				
										AWW	704				
										8/1 WT	1175				
										8/1 SC	39 cm				
										%IMF	3.18				
										REA	10.47				
	BLD	GRD	CED	BW	WW	YW	MILK	ME	HPG	CEM	STAY	MB	YG	CW	REA
EPDs	110	48	3	0.5	76	108	15	6	12	6	12	0.33	0.15	35	0.05
Top%	53	75	55	79	6	16	89	87	29	21	46	75	90	14	59

- Top 6% WW on this 105 WR, 101 YR bull out of a Packer x Cherokee Cyn bred dam!

## The last of our Six Mile Wild West 0913W sons...



LOT	JEFFRIES WILD WEST 462A (ET)														
81	12/19/2013 JLJ/462A 1A-100 #1677933														
RED SIX MILE MASTERMIND 854M SIX MILE WILD WEST 0913W JCC ELORA 45S  MLK CRK CUB 722 4L MS R903 CUB R34N 4L MS MAKE MY DAY R903 MPPA: 97.8										Performance					
										BW	84				
										AWW	542				
										8/1 WT	1310				
										8/1 SC	36 cm				
										%IMF	3.11				
										REA	12.51				
	BLD	GRD	CED	BW	WW	YW	MILK	ME	HPG	CEM	STAY	MB	YG	CW	REA
EPDs	72	47	-2	-0.7	55	81	18	-2	10	4	8	0.32	0.13	17	-0.15
Top%	91	88	95	56	65	71	70	26	62	51	85	77	86	66	94

- Just like his daddy, 462A possesses that extra length and muscle shape!

LOT	JEFFRIES WILDWEST 638B														
82	2/8/2014 JLJ/638B 1A-100 #1678097														
RED SIX MILE MASTERMIND 854M SIX MILE WILD WEST 0913W JCC ELORA 45S  RED MOBO HIGH INTEREST RED KBJ INATEX 1036U RED KBJ INATEX 969N MPPA: 99.6										Performance					
										BW	87				
										AWW	663				
										8/1 WT	1110				
										8/1 SC	35 cm				
										%IMF	3.61				
										REA	13				
	BLD	GRD	CED	BW	WW	YW	MILK	ME	HPG	CEM	STAY	MB	YG	CW	REA
EPDs	96	47	-1	1.5	60	90	16	-13	13	2	9	0.28	0.08	21	0.06
Top%	70	89	90	91	48	52	83	2	16	80	81	84	69	55	57



- This moderate framed meat wagon posted a 105 YR and a 114 REA ratio!

# JEFFRIES RED ANGUS - AGE ADVANTAGED 18 MONTH OLD BULLS

## More Pursuit sons for added performance and muscle!

LOT 83	JEFFRIES PURSUIT 550B															
	1/9/2014 JLJ/550B 1A-100 #1678014															
RED CINDER PURSUIT 101S RED LONE STONE PURSUIT 81W RED LONE STONE MISS INDEED 6  LSF JBOB EXPECTATION 6034S JEFFRIES MS DANA X696 BIEBER MISS DANA 119U MPPA: 102.8										Performance						
										BW AWW 8/1 WT 8/1 SC %IMF REA		95 775 1345 40 cm 3.72 13.49				
	HBLD	GRID	CED	BW	WW	YW	MILK	ME	HPG	CEM	STAY	MB	YG	CW	REA	
EPDs	91	47	2	3.4	80	102	9	-7	8	7	8	0.53	-0.02	39	0.36	
Top%	75	88	66	99	3	28	99	7	88	12	86	31	25	8	11	



- One of the best Pursuit sons in the offering, 550B posted a 775 AWW and ranks in the top 3% of the breed with a 80 WW EPD! He also posted a 108 REA ratio!



LOT 84		JEFFRIES PURSUIT 464A													
		12/20/2013 JLJ/464A 1A-100 #1677935													
RED CINDER PURSUIT 101S RED LONE STONE PURSUIT 81W RED LONE STONE MISS INDEED 6  BECKTON EPIC U368 KM JEFFRIES MS TWYLA X764 BASIN SAM 8948 MPPA: 104.9										Performance					
										BW			81		
										AWW			770		
										8/1 WT			1295		
										8/1 SC			40.5 cm		
%IMF			3.6												
REA			10.25												
	BLD	GRD	CED	BW	WW	YW	MILK	ME	HPG	CEM	STAY	MB	YG	CW	REA
EPDs	118	47	5	0.6	76	101	13	-12	9	7	9	0.39	0.1	30	0.12
Top%	43	85	36	80	5	30	95	2	79	12	76	61	77	26	44

- Check out the numbers... he ranks in the top 5% for WW, the top 2% for ME and the top 12% for CEM!

LOT 85	JEFFRIES PURSUIT 544B															
	1/8/2014 JLJ/544B 1A-100 #1678010															
RED CINDER PURSUIT 101S RED LONE STONE PURSUIT 81W RED LONE STONE MISS INDEED 6  RED T-K SUM-MIT 28T SIX MILE BARBIE 819W RED ROSE HILL BARBIE 3T MPPA: 98.9										Performance						
										BW AWW 8/1 WT 8/1 SC %IMF REA		93 791 1120 35 cm 3.42 12.03				
	HBLD	GRID	CED	BW	WW	YW	MILK	ME	HPG	CEM	STAY	MB	YG	CW	REA	
EPDs	79	45	-1	4.5	80	104	2	-11	9	4	8	0.18	0.11	41	0.16	
Top%	87	99	90	99	2	23	99	2	70	51	91	93	80	6	36	



- 544B posted a 791 AWW to earn him an 80 WW EPD, ranked in the top 2% of the breed!



**JEFFRIES RED ANGUS - AGE ADVANTAGED 18 MONTH OLD BULLS**



## Club Calf Heifer Bull Prospect...



LOT 86	JEFFRIES PURSUIT 560B														
	1/14/2014 JLJ/560B 1A-100 #1678023														
RED CINDER PURSUIT 101S RED LONE STONE PURSUIT 81W RED LONE STONE MISS INDEED 6										<i>Performance</i>					
RED SIX MILE SAKIC 832S SIX MILE ABBEY 841W RED SIX MILE ABBY 774S MPPA: 99.6										BW	77				
										AWW	541				
										8/1 WT	1200				
										8/1 SC	34.5 cm				
										%IMF	3.22				
										REA	12.38				
	HRD	GRD	CED	BW	WW	YW	MILK	ME	HPG	CEM	STAY	MB	YG	CW	REA
EPDs	102	48	2	-1.3	57	89	8	-10	7	9	9	0.06	-0.01	18	0.22
Top%	62	78	66	45	60	55	99	3	92	3	84	99	29	63	26

*Lot 86... he's got the look!*



- 560B has the pattern and the muscle shape to make a potential big-time heifer bull to be used for siring club calves!
- He is backed by a very strong maternal tabulation, stacking Six Mile Sakic and Towaw Indeed 104H.



***Lots 91-100... the best of our Open Heifers  
They are all halterbroke and ready to go!***



*Her GDam,  
Abby 689S...*

*Her dam's full brother, C-Bar  
Evolution, is a premier calving ease  
sire at ABS!*

***- Once again, we are offering the top prospects from our entire open heifer crop!***

***- Ms Abby B719 is one of the most complete genetic packages you will find offered this fall! Moderate and very typey, she comes from a first calf dam that is a full sister to the popular ABS sire, C-Bar Evolution.***

LOT 91	JEFFRIES MS ABBY B719														
	12/15/2014			JLJ/B719			1A-100.0			#1750110					
RED SSS OLY 554T VGW OLY 903 VGW TM-DORA 0758  TR COLT 45 UT806 JEFFRIES MS COLT A417 LGS ABBY 689S MPPA: 99.2										Performance					
										BW AWW WR			55 601 99		
	HERD	GRID	CED	BW	WW	YW	MILK	ME	HPG	CEM	STAY	MB	YG	CW	REA
EPDs	125	53	3	-5.5	58	107	20	3	10	4	12	0.36	0.04	28	0.18
Top%	32	3	54	3	55	18	55	71	54	51	41	67	52	29	31



## JEFFRIES RED ANGUS - PICK OF THE HEIFER CALVES

*All the sale heifers have been pre-entered into the 2015 National Red Angus Show at the Nile in Billings, MT!*



LOT 92	JEFFRIES MS LAURA C881														
	01/21/2015    JLJ/C881    1A-100.0    #1750264														
RED SSS OLY 554T VGW OLY 903 VGW TM-DORA 0758  BASIN CHEROKEE 5856 BASIN LAURA 8524 BASIN LAURA 5046 MPPA: 105.1										Performance					
										BW AWW WR			78 690 107		
	HBLD	GRID	CED	BW	WW	YW	MILK	ME	HPG	CEM	STAY	MB	YG	CW	REA
EPDs	104	52	3	-1.7	65	111	15	6	10	5	10	0.55	0.04	27	0.18
Top%	59	6	54	36	29	12	88	90	51	34	69	25	52	35	31



*Lot 91 & 92's sire, VGW Oly 903... at six years of age he is as masculine, sound and easy doing of a beef bull as you will find in the industry!*

- *Wow! Here is one you don't find for sale every day! Ms Laura C881 is a big-time, world class female, both genetically and in phenotype.*
- *Her dam is one our many good Basin bred females, earning a 105.1 MPPA with a record of 107 AWR, 103 AYR and 133 IMF average on her progeny.*
- *Retaining the right to two (2) ET flushes with a minimum of four (4) good embryos per flush, at buyers convenience and our expense.*

**Lot 93...**  
**welcome to the**  
**big leagues!**



LOT 93	JEFFRIES MS GOLDIE C858														
	01/14/2015 JLJ/C858 1A-100.0 #1750214														
LJT CITADEL 812 TROTTERS STRONGHOLD 156 LJT PEARL 579  BASIN EXT 8141 JEFFRIES MS GOLDIE X705 RED GOLD-BAR GOLDIE NO 204R MPPA: 105.6										<b>Performance</b>					
										BW	80				
										AWW	674				
										WR	106				
	IBLD	GRID	CED	BW	WW	YW	MILK	ME	HPG	CEM	STAY	MB	YG	CW	REA
EPDs	105	47	2	1.8	65	96	25	0	10	7	11	0.44	0.19	32	0.06
Top%	57	84	65	92	27	37	15	44	55	11	53	48	97	21	56

**- Ms Goldie C858 is a female that will compete in any arena! Out of a powerful 105.6 MPPA EXT 8141 dam, she is sired by Trotters Stronghold 156, the exciting growth and type sire at Genex.**

**- Retaining the right to two (2) ET flushes with a minimum of four (4) good embryos per flush, at buyers convenience and our expense.**



**Lot 94...**  
**is headed in the**  
**'right direction'!**

LOT 94	JEFFRIES MS JANE B735														
	12/21/2014 JLJ/B735 1A-100.0 #1750126														
ANDRAS IN FOCUS B152 ANDRAS NEW DIRECTION R240 ANDRAS KURUBA B111  BIEBER H HUGHES W109 JEFFRIES MS JANE Z236 MS ADVANCER OF 4L R28P MPPA: 105.2										<b>Performance</b>					
										BW	72				
										AWW	680				
										WR	112				
	IBLD	GRID	CED	BW	WW	YW	MILK	ME	HPG	CEM	STAY	MB	YG	CW	REA
EPDs	114	51	3	1.0	84	135	23	0	11	6	11	0.48	0.20	46	0.20
Top%	46	19	54	84	1	1	26	45	41	20	57	39	98	3	28

**- One of the first Andras New Direction daughters to sell, she is out of a first calf Hughes W109 dam.**

**- Retaining the right to two (2) ET flushes with a minimum of four (4) good embryos per flush, at buyers convenience and our expense.**



**JEFFRIES RED ANGUS - PICK OF THE HEIFER CALVES**



**Lot 95...**  
**has the data to**  
**become a top**  
**donor!**

LOT 95	JEFFRIES MS NOLINAGE C851														
	01/12/2015 JLJ/C851 1A-100.0 #1750207														
BECKTON NEBULA P P707 <b>BROWN ALLIANCE X7795</b> C-BAR & BROWN ABIGRACE T714  BIEBER H HUGHES W109 <b>JEFFRIES MS NOLINAGE Z149</b> BIEBER NOLINAGE 159U MPPA: 104.9										<b>Performance</b>					
										<b>BW</b>	74				
										<b>AWW</b>	669				
										<b>WR</b>	107				
	UPLD	GRID	CED	BW	WW	YW	MILK	ME	HPG	CEM	STAY	MB	YG	CW	REA
EPDs	145	53	0	0.5	85	134	15	3	16	2	15	0.99	0.20	46	0.15
Top%	16	2	84	77	1	1	87	64	1	81	17	2	98	3	36

**- Ms Nolinage C851 ranks in the top 3% or better in the entire breed for six different traits!**

**- Her 104.9 MPPA first calf dam is a maternal sister to Jeffries Power Keg 528B, featured as Lot 10.**

**Lot 96...**  
**for those that**  
**prefer more**  
**muscle!**



LOT 96	JEFFRIES MS KARINA C822														
	01/07/2015 JLJ/C822 1A-100.0 #1750232														
COLEY'S MOJITO 503R <b>COLEY'S 503R TRAILBOSS 7170</b> MKM PRINCESS 3F  SIX MILE INTEGRITY 691W <b>JEFFRIES MS KARINA Y880</b> TR KARINA RANGER W904 MPPA: 103.7										<b>Performance</b>					
										<b>BW</b>	81				
										<b>AWW</b>	687				
										<b>WR</b>	108				
	UPLD	GRID	CED	BW	WW	YW	MILK	ME	HPG	CEM	STAY	MB	YG	CW	REA
EPDs	99	48	1	1.4	61	96	20	-2	12	5	11	0.23	0.04	22	0.07
Top%	65	78	76	89	44	39	56	27	21	34	56	89	52	49	54

**- Ms Karina C822 is super stout... she has that added muscle shape and fullness to her hip!**

**- She combines two of our owned sires, Trailboss and Six Mile Integrity 691W.**



**Lot 97...**  
**a picture of**  
**power and**  
**productivity!**



LOT 97	JEFFRIES BONNEBELL B737														
	12/21/2014 JLJ/B737 1A-100.0 #1750128														
VGW JUSTICE 614 <b>FRITZ JUSTICE 8013</b> FRITZ CHRIS 6047  BASIN CHEROKEE 5856 <b>BASIN BONNEBELL 8564</b> BASIN BONNEBELL 5018 BR MPPA: 104.2										<b>Performance</b>					
										<b>BW</b>		73			
										<b>AWW</b>		717			
										<b>WR</b>		105			
	HBLD	GRID	CED	BW	WW	YW	MILK	ME	HPG	CEM	STAY	MB	YG	CW	REA
EPDs	128	52	7	-0.9	79	130	21	5	10	7	12	0.65	0.26	44	0.06
Top%	30	7	19	51	3	2	51	84	51	11	45	13	99	4	56

*- Bonnebell B737 comes by her breed leading looks and performance naturally... her 104.2 MPPA dam has already produced us a herdsire, Sakic 27Z, with progeny in this event!*

*- Retaining the right to two (2) ET flushes with a minimum of four (4) good embryos per flush, at buyers convenience and our expense.*

**Lot 98...**  
**redefines the**  
**meaning of**  
**'brood cow'!**



LOT 98	JEFFRIES MS BRIDGET B743														
	12/24/2014 JLJ/B743 1A-100.0 #1750133														
VGW JUSTICE 614 <b>FRITZ JUSTICE 8013</b> FRITZ CHRIS 6047  HXC CONQUEST 4405P <b>JEFFRIES MS BRIDGET X674</b> BIEBER BRIDGET 112U MPPA: 99.1										<b>Performance</b>					
										<b>BW</b>		78			
										<b>AWW</b>		676			
										<b>WR</b>		99			
	HBLD	GRID	CED	BW	WW	YW	MILK	ME	HPG	CEM	STAY	MB	YG	CW	REA
EPDs	129	52	10	-1.0	80	132	22	4	5	8	11	0.71	0.24	43	0.15
Top%	29	4	6	49	3	2	34	71	98	6	50	9	99	5	36

*- Ms Bridget B743 is a tank! This deep sided donor prospect ranks in the top 9% or better in the breed for seven traits! Her dam is a top young daughter of breed calving ease legend, HXC Conquest 4405P.*



**JEFFRIES RED ANGUS - PICK OF THE HEIFER CALVES**



*Lot 99...  
her time  
is right now!*

LOT 99		JEFFRIES MS CHICO B690														
		09/16/2014 JLJ/B690 1A-100.0 #1737930														
		BECKTON JULIAN GG B571 TJS TIMELESS Y606 MCGEE PRIMROSE 6757  TJS BERRY CHERRY 8801 TJS CHICO X0294 LCC CHICA LA195 MPPA: 106.9										Performance				
												BW AWW WR		71 672 112		
		HB	GR	CE	BW	WW	YW	MILK	ME	HPG	CEM	STAY	MB	YG	CW	REA
EPDs	142	50	6	-1.6	59	93	23	-0	12	6	14	0.54	0.08	23	0.15	
Top%	18	33	26	38	51	45	26	40	25	20	25	27	71	46	36	

*- Ms Chico B690 is a Sept. '14 born that will be very competitive in her division. She is royally bred, stacking breed legends, Julian B571, Golden Boy 719, and Double Chief N601.*



*TJS Mattie X0143...*

LOT 100		JEFFRIES MS DIAMOND B710														
		10/04/2014 JLJ/B710 1A-100.0 #1737949														
BECKTON JULIAN GG B571 TJS TIMELESS Y606 MCGEE PRIMROSE 6757  TJS BERRY CHERRY 8801 TJS DIAMOND Y441 TJS DIAMOND MA484 MPPA: 98.0												Performance				
												BW AWW WR		68 630 105		
	IBLD	GRID	CED	BW	WW	YW	MILK	ME	HPG	CEM	STAY	MB	YG	CW	REA	
EPDs	126	50	4	-1.5	61	97	17	2	12	3	13	0.50	-0.01	23	0.32	
Top%	31	25	44	39	42	36	78	54	20	67	31	35	30	46	13	



*- This fancy Oct. '14 born is another Timeless heifer out of Diamond Y441, a full sister to the '12 NAJRAE Grand Champion Owned Female, TJS Mattie X0143!*



LOT 101

*Liss Ranch, Elbert, CO*

## **Commerical Bred Heifers - 80+ head all AI Bred!**

- Offering 80+ head (2 potloads) of commercial Red Angus bred heifers, all confirmed AI bred. One load will be on display at the sale Jeffries sale facility.
- Heifers are AI'd to Andras Smart Choice R264. reg# 1600121 (see Reference sire pg 10 for more info), due to calve February 1, 2016.
- Freight from the Jeffries sale site and / or Liss Ranch, CO is the buyer's responsibility.
- Vaccination program: Bovi-Shield Gold FGVL5, Multimin, and Ivermectin pour on. Complete Mineral program.
- Heifers will sell in groups of 10 head, and the winning bidder has the option to take as many in multiples of ten up to all 80+ head.

For information on these heifers contact...  
Garrett Liss 303-243-0321 cell  
Jason & Mary Sue Liss 719-495-3927 Home



## LOT 102 A & B

*Cowling Land & Cattle Co, Yukon, OK*

### **Commerical Bred Heifers - 30+ Head!**

- Lot 102A - 15+ Head of heifers examined 6 mos.+ bred to calving ease Red Angus bulls.
- Lot 102B - 15+ Head of heifers 30 days bred to calving ease Red Angus bulls.

For information on these heifers contact...  
Bob Cowley 405-620-7362.



## LOT 103

*Alfadale Stock Farms, El Reno, OK*

### **10+ Head of open yearling fall born Red Angus heifers!**

- 10+ commercial Red Angus open yearling heifers born in the fall of 2014.
- Many females would have originated from the Rethal King program.

For information on these heifers  
contact...

Peter Jeffrey (405) 202-7694.



Hours:  
Mon-Fri 8:00-5:00  
Sat 8:00-Noon

**GOLDEN**  
**AG INC.**

**918.473.0335**

416917 Hwy. 266  
Checotah, OK 74426

At **GOLDEN AG INC.** We possess a broad range of knowledge gained through years in the industry and a passion for helping you succeed. Call or visit us today!

We are located 3 miles west of Checotah on Highway 266

**Vermeer®**



We are a Full-Service parts provider for Vermeer & have an on-site Vermeer certified technician



We provide services ranging from new and used Vermeer equipment sales to parts, service and support.



Werk Weld troughs are available in many sizes & types



Call for more information & prices for Pearson cattle chutes



WW corrals are durable & easy-to-set-up



They can be set up in several different configurations



**PARTS**  
FOR MANY BRANDS  
OF FARM EQUIPMENT

Hydraulic hoses and fittings for many applications.  
Custom built to meet your needs.  
Give us a call for more information & prices



**WWW.GOLDENAGINC.COM**

## **SALE TERMS AND CONDITIONS**

Except for those stated in the terms and conditions below, there are no warranties, either expressed or implied, as to the merchantability or fitness for a particular purpose with respect to the cattle being sold at this auction. The warranties and guarantees set forth in the "Terms and Conditions" are in lieu of all other warranties, either expressed or implied, and the remedies provided therein shall be the sole and exclusive remedy for the Buyer, or any party claiming through Buyer, for any breach of warranty or guarantee therein provided, and all other obligations or liabilities.

All cattle in this sale are offered according to the laws of the State wherein the sale is conducted. The right to bid, as provided under law, is reserved for all sellers unless otherwise announced.

### **1. BIDDING**

The Auctioneer in charge will settle any disputes as to bids, and his decision on such matters shall be final.

### **2. TERMS**

Terms of sale are cash unless satisfactory credit arrangements have been made with Sale Management prior to sale.

### **3. PURCHASER'S RISK**

Each animal becomes the risk of the Buyer as soon as sold, but it shall be the obligation of the Seller to see that animals are fed and cared for free of charge to Buyer, until loaded for shipment or until the expiration of 48 hours after the sale, whichever occurs sooner.

### **4. CERTIFICATE OF REGISTRY**

A transferred certificate of registry will be furnished to the Buyer for each animal.

### **5. HEALTH**

All animals are eligible for interstate shipment, except as otherwise announced. Interstate health papers will be furnished for each animal requiring tuberculosis and brucellosis tests in accordance with Federal Regulations.

### **6. ANNOUNCEMENTS**

Any changes from information of any kind in the sale catalog or related materials will be announced from the auction block and such announcements shall take precedence.

### **7. BREEDING GUARANTEE**

The nature and extent of the Breeding Guarantee is set forth in section 10 of the Red Angus Association of America's Sale Terms and Conditions.

### **8. DEFAULT**

In the event the Buyer defaults on payment, the Buyer shall be responsible for all costs, including attorney's costs, incurred by Sale Management or Seller in connection with collecting, or attempting to collect, payment due.

### **9. SELLER'S SEMEN RIGHTS**

The Seller reserves the right to 1/3 semen interest in every bull sold, unless specified differently in the sale catalog. Any semen collected for the Seller will be at their cost and the Buyer's convenience.

### **10. LIABILITIES**

All persons who attend the sale do so at his or her own risk. The Seller, and the Sale Manager assume no liability of accidents that may occur. It is to be clearly understood that the Sale Manager and their representatives act only as a medium between the Buyer and Seller.

### **11. CONTRACT**

The above terms and conditions shall constitute as a contract between the Buyer and Seller for each sale animal and shall be equally binding upon both. Each sale and/or resale of a sale animal constitutes a separate transaction.

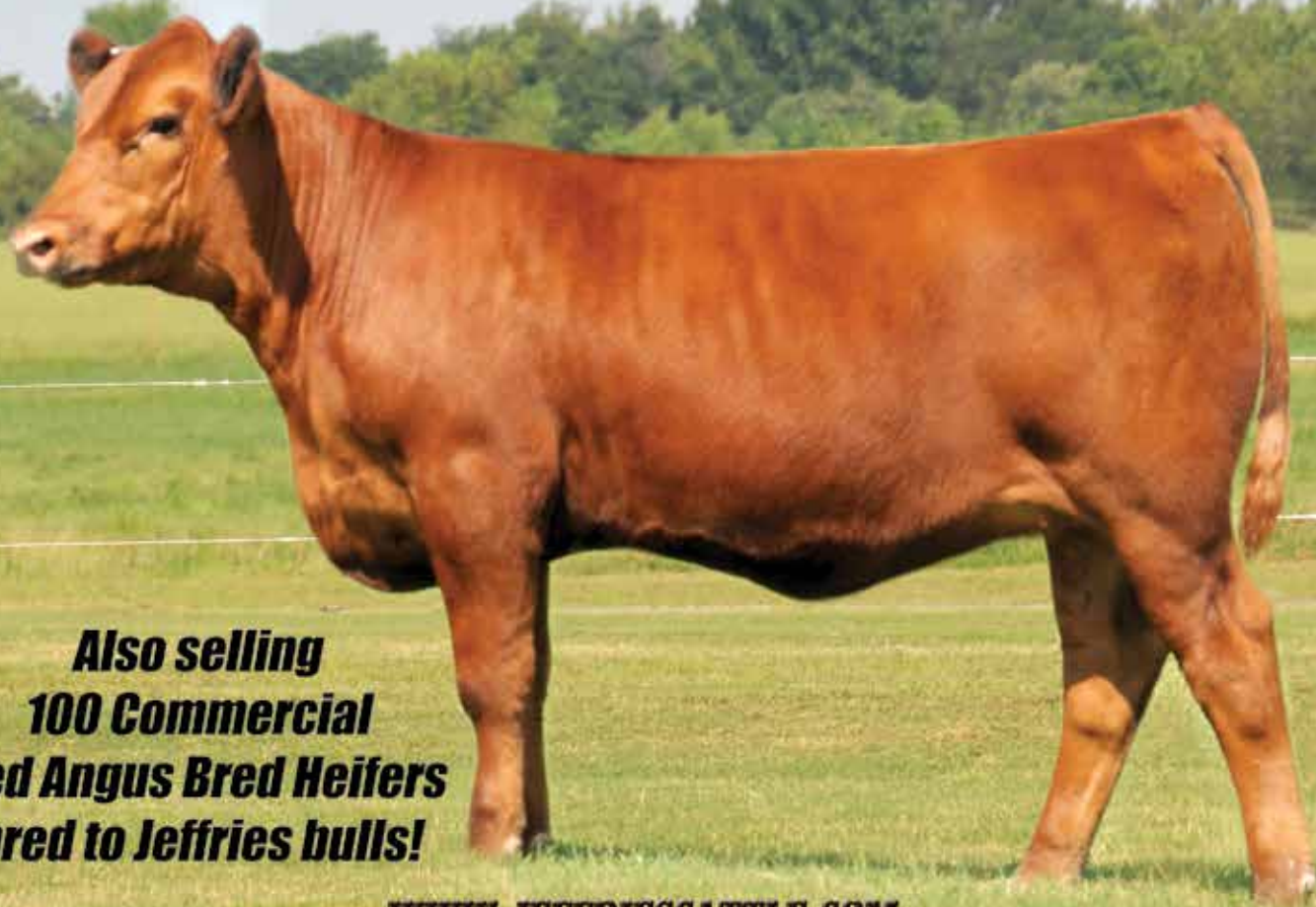
## **Thank You... Please Join Us Again!**

**JERRY & TRICIA JEFFRIES**  
419526 E 1070 Road  
Checotah, Oklahoma 74426

*DATED MATERIAL*



***The pick of our heifer calf crop...  
all halterbroke and ready to go!***



***Also selling  
100 Commercial  
Red Angus Bred Heifers  
bred to Jeffries bulls!***

**WWW.JEFFRIESCATTLE.COM**