



EFFRIES RED ANGUS

ANNUAL BULL & FEMALE SALE

FRIDAY, SEPTEMBER 30TH 12:30PM CHECOTAH, OKLAHOMA



***Our
Program
is on the
move...***

Legacy...

*a knowledge of the industry handed down from generations of
experience in the Seedstock business!*

Dear Red Angus Enthusiasts & Cattlemen,

Legacy Genetics is proud to be associated with Jerry Jeffries and his family here at Jeffries Red Angus. He is one of the most progressive breeders in the country and is committed to raising Red Angus genetics that work in the hot and humid Southeast portion of this country.

The Jeffries program has been on the move... moving towards better, sounder, more predictable genetics to provide to the commercial cowman. With extensive embryo transplant work, they have taken their best genetics and are mass producing them to provide a superior genetic product to their customers.

As a member of Legacy Genetics, they are involved with a very select group of Red Angus breeders around the country that all have similar goals in mind... providing the genetics and services for their customers that will increase the productivity and profitability of their operations.

This offering features a set of functional, sound, rugged age-advantaged bulls that are ready to go to work! Jeffries is also offering a beautiful set of open halter-broke heifers again this year. Once again, they are offering a set of mature bred cows, their most proven genetics. These cows include a set of foundation females from the famed Basin Reds program out of Montana, and many of the cows are carrying ET calves with Jeffries' most advanced genetics!

If you have any questions about the offering or Legacy Genetics please feel free to contact me, via my email (sal1968@msn.com) or by phone (406) 591-5651.

Sincerely,
Seth Leachman

Josh Dykes
(509) 366-1968
joshdykes@legacydirect.com

Seth Leachman
(406) 591-5651
sal1968@msn.com

LEGACY
GENETICS



JEFFRIES RED ANGUS



ANNUAL BULL & FEMALE SALE

FRIDAY, SEPTEMBER 30TH, 2016 12:30 PM CHECOTAH, OKLAHOMA

Schedule of Events:

Thursday, September 29th –

Pre-sale viewing of cattle all day. Refreshments and snacks available.

6:00pm - Prime rib steak dinner served at the sale barn, followed by comments from RAAA Director of Business Development, Harold Bertz!

Friday, September 30^h –

11:30 pm – Lunch is served!

12:30 pm – Jeffries Annual Bull & Female Sale

Please join us after the sale for a ribeye steak diner at the sale barn!

Auctioneer:

Colonel James M. Birdwell

Fletcher, Oklahoma

(580) 549-6636

Ranch Manager:

Kirk Breed - (405) 830-5279

Herdsmen:

J C Andras - (580) 399-9730

Special Sale Representatives:

Chisholm Kinder – Oklahoma Cowman

(405) 235-4391

Doug Paul – The Stock Exchange

(405) 820-3982

Mark Sims - High Plains Journal

(580) 795-0901

Phil Stoll - The Weekly Livestock Reporter

(817) 366-7332

Delvin Heldermon - Special Agent

(580) 622-4016

JW Brune - Midwest Marketer

(785) 865-6624

Bill Schermer - Midwest Beef Producer

(641) 425-2541

Sale Day Phones:

Sale Barn Office – (918) 473-0335

Jerry Jeffries – (918) 638-3317

Tricia Jeffries - (918) 638-3042

Kirk Breed – (405) 830-5279

Seth Leachman – (406) 591-5651

J C Andras - (580) 399-9730

Lodging:

Stay Inn Eufaula – Checotah, OK

(918) 689-3999 Hwy 150 & Hwy 69

Best Western Eufaula Inn - Eufaula, OK

(918) 689-5553

Americas Best Value Inn – Checotah, OK

(918) 473-2381 Hwy 266 & Hwy 69

Breed Representatives:

Harold Bertz – RAAA Director of Business Development

(816) 661-2289 harold@redangus.org

Delivery/Trucking:

Free delivery for purchases over 5 head. All other deliveries at \$150/head or less. All commercial heifers delivered at buyer's expense.

Sale Managed by

Seth Leachman GENETICS



Bid online at:



CONTACTO EN MEXICO

(406) 591-5651 sal1968@msn.com

BILLY ESTRADA CEL: 618-815-1495

NEXTEL: 72*14* 44493

WWW.JEFFRIESCATTLE.COM

**JERRY & TRICIA JEFFRIES
CHECOTAH OKLAHOMA 74426**

918-638-3317

JEFFRIES RED ANGUS- ARTICLE FROM AMERICAN CATTLEMEN

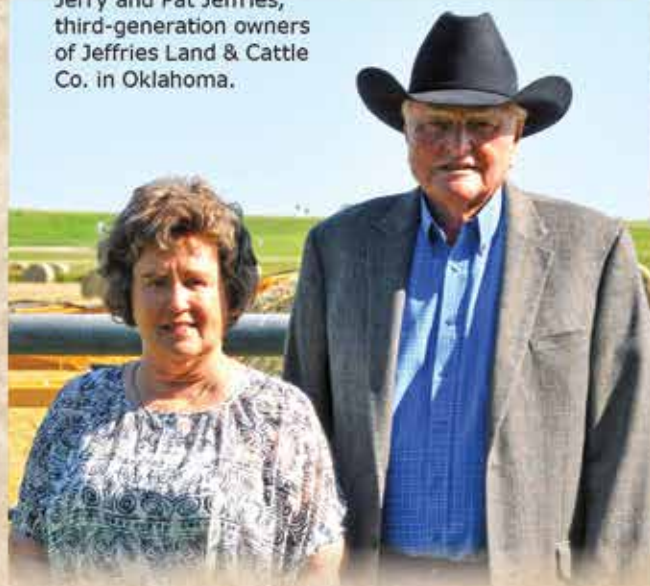
This article is featured in the 2015 Cattle Auction Guide of the American Cattlemen magazine.

When it comes to breeding and raising cattle, it all comes down to one key: choice of breed and quality. One of the premiere cattle breeds in the world is the Red Angus. One of the most respected breeders in the industry is Jerry L. Jeffries, who along with his wife Patricia, owns Jeffries Land & Cattle Co., (www.jeffriescattle.com) located near Checotah, Oklahoma. With a breeding program based on Red Angus quality and the needs of the industry, Jeffries Land & Cattle Co., has built a clientele of satisfied customers, large and small, commercial or registered cattlemen.

Jeffries takes great pride in the heritage of the land on which Jeffries Land & Cattle is located. "I grew up right here where I live today." Originally purchased by his grandfather, Jeffries has grown and expanded the original property and says members of the fifth and sixth generation also live on the ranch. Even though he could take the time to slow down, Jeffries has no intentions of retiring and currently raises 370 head of Red Angus on the ranch. "I'm just having too much fun. I like to meet and work with people."

In discussing his Red Angus cattle, Jeffries believes it is important to always be looking to improve the genetics of his cattle. "As genetics evolve and types may change, we will continue to place our emphasis on the beef-industry traits that have carried us to our success — fertility, soundness, conformation, muscle, and style. We believe in the Red Angus breed and its place in the global beef industry, and work hard to make sure our cattle meet the criteria and characteristics that help feed the world. We

Jerry and Pat Jeffries, third-generation owners of Jeffries Land & Cattle Co. in Oklahoma.



have a strict culling process to maintain the high standard of cows that produce the type of bull that we are proud to sell. This is required to satisfy the needs of every step in the production chain."

Jeffries continues, "We're always looking for the freshest genetics out there." Jeffries is a member of the newly formed Legacy Genetics, a group working together to improve genetics with the goal of making Red Angus one of the most valued breeds on the market.

KEEPING ON THE CUTTING EDGE

One of the keys to the success of Jeffries Land & Cattle Co., has been the ability to make changes as the market changes. "We put a high emphasis on phenotype and structural soundness in the Jeffries Land & Cattle Co. breeding programs. As the focus of the industry has shifted to added value from carcass genetics, the Jeffries Land & Cattle Co. herd sires have set the standard for the industry with young sires set to push the bar even higher. Through the years, our sales have been private treaty sales negotiated at the ranch and in the last five years our annual Bull and Female Sale."

According to Jeffries, several employees have been instrumental in the growth and overall success of Jeffries Land & Cattle Co. Kirk Breed has been Operations Manager for over 25 years, J. C. Andras has been herdsman for over four years and for the past six years Jeff Taylor has been overseer of all of the part time help and FFA members that come to work at the ranch. "Without these guys, our operation wouldn't be where it is today. They are hard workers and take pride in what we do here."



© 2011



THE ANNUAL AUCTION

Jeffries Land & Cattle Co., is the source for Red Angus seedstock and commercial genetics in the Southeast. Highlight of the year comes the last Friday in September, when Jeffries Land & Cattle Co., holds its annual Bull and Female Sale. This year's sale takes place on Friday, September 25, 2015 with 100 of the finest Red Angus bulls and 50 of the finest Red Angus females to be auctioned off. At the same time, 10-12 Red Angus show heifers will be sold. "Kids that have bought one of our heifers have done very well. We like to say, 'we grow 'em; you show 'em!'"

"This will be our fifth annual Bull and Female Sale." According to Jeffries, the sale continues to grow each year. "We sell bulls all over the United States and Mexico, and our females have been purchased by producers across the country and in Canada. We start off on Thursday evening with several ag-related speakers and a prime rib dinner. Then on Friday, we grill up burgers and all the fixings for lunch with the auction starting promptly at 12:30 p.m."

In addition to the annual sale, Jeffries also offers private sales for producers who want to come to the ranch and pick out their bulls or heifers. "We have cattle that are not quite ready for the September sale, so when they are ready, we then sell them privately."

Jeffries is quick to point out the pride that he has for the region of Oklahoma where he resides, and believes in giving back. "We support the local FFA chapters any way that we can. They can arrange visits to the ranch and use our cattle to work with their judging teams. We also do the same for the local colleges. We have also hosted the Oklahoma Cattleman's Association." For Jeffries, it is truly about giving back! ♦



LIVING A GOLDEN LIFE

In addition to their passion for ranching and Red Angus cattle, Jeffries and his wife also have other interests. "My wife has owned the Checotah Flower and Gift Shop nearby Checotah for nearly 25 years." Jerry, meanwhile, has over 40 years of experience in surveying, mapping, inspection of pipelines, right-of-way and construction management throughout the United States.

Jeffries founded Jeffries & Associates, Inc. in 1976 headquartered in Tulsa, Oklahoma with nationwide operations to the pipeline, gas transmissions, and telecommunications fields. He later sold Jeffries & Associates in 1984 and continued employment as President until leaving in 1994.

Jeffries founded Golden Field Services, Inc. (jjeffries@golden-fieldservices.com) in 1997 endeavoring to organize and furnish to the pipeline, power, and telecommunications industries coordinated survey, mapping, inspection, rights-of-way, and construction management services. Jeffries has worked with and identified the most qualified resources in terms of capabilities, experience, safety, quality standards, specifications and permit compliance.

Once again, it's about the people. "I like meeting and working with people." Jeffries will do all of the preliminary work to get bids accepted and then turn the next steps over to his project managers. According to Jeffries, success is based on the quality people working at Golden Field Services. "I have people who have been working with me since the 1970s!

Yes, owning a ranch, selectively breeding Red Angus cattle and running Golden Field Services take a lot of time, and although he could retire, Jeffries is quick to say, "I'm having too much fun to quit!"

Jeffries family members from all generations help to run the ranch.





JEFFRIES RED ANGUS - THE CREW



The people behind the scenes that make the difference!



Kirk Breed... Ranch Manager

*Not pictured:
Deryk Bollinger
Whitney Andras
Deb Andras*



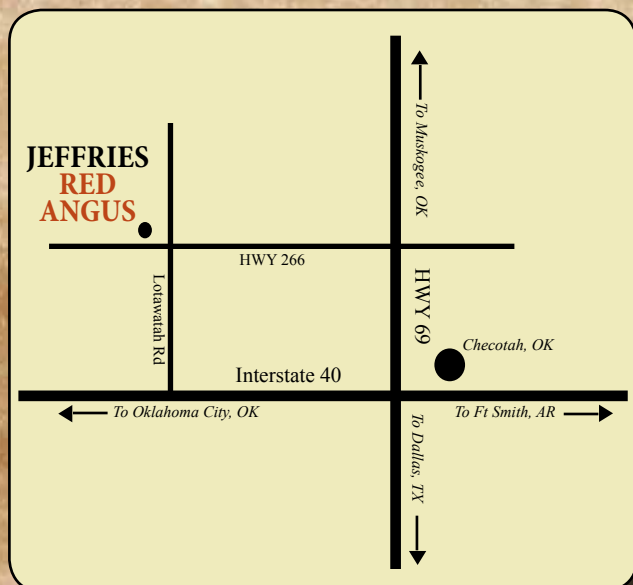
Mike Breed



Zach McCartney



JC Andras... Herdsman



*Look for
the
Orange
Boot!*



Directions to our new sale facility...

From Muskogee, take 69S to Hwy 266 exit, go 3.3 miles west on Hwy 266.

From Eufala, take 69N to Hwy 266 exit, go 3.3 miles west on Hwy 266.

From Oklahoma City, take 40E to Exit 262, go 2 miles north on Lotawatah Rd.

From Ft Smith, take 40W to Exit 262, go 2 miles north on Lotawatah Rd.



This sale will be broadcast live on the internet.

DVAuction

Broadcasting Real-Time Auctions

Real time bidding & proxy bidding available.

*For information on the offering contact
Chad Gordon, our DVAuction representative
(580) 678-1918*



Watch & Bid online for FREE!

Can't make the sale?

Let DVAuction bring the sale to you!

Busy during the sale?

Let DVAuction represent your bid!

Visit www.dvauction.com and Register!

It's as easy as 1, 2, 3...

1. Create an account at www.dvauction.com under the "create new account" tab
2. Apply for bidding by clicking "apply for bidding" in the upper left corner of your screen, at least 24 hours prior to the auction
3. Tune into the sale and make your purchases!

For General Questions Please Contact Our Office:
(402) 316-5460 or support@dvauction.com

**High Speed Internet Access Required*



ANDRAS NEW DIRECTION R240

09/25/11 1A 100.0% WSA/R240 #1506922

MYTTY IN FOCUS

ANDRAS IN FOCUS B152

ANDRAS PINETA B91

MORGANS DIRECTION 111 9901

ANDRAS KURUBA B111

ANDRAS KURUBA B71

RAAA EPDs

HB	GM	CED	BW	WW	YW	MILK	ME	HPG	CEM	STAY	MB	REA
61	52	5	-1.1	65	111	32	-5	10	8	3	0.84	-0.01

One of the breed's premier AI sires, New Direction offers a complete outcross pedigree for most. His calves are big ribbed, dark red and loaded with performance and eye appeal. Last year, New Direction sired our \$17,000 high selling heifer calf.



VGW OLY 903

01/27/09 1A 100.0% VGW/903 #1322060

RED CROWFOOT OLE'S OSCAR

RED SSS OLY 554T

RED SSS GOLD EDGE 77R

VGW TRADEMARK 4101

VGW TM-DORA 0758

VGW PT- DORY 0361

**\$25
per
unit**

RAAA EPDs

HB	GM	CED	BW	WW	YW	MILK	ME	HPG	CEM	STAY	MB	REA
109	53	2	-4.6	59	114	24	5	8	8	10	0.32	0.29

*Oly 903 is an exciting young sire with a huge birth to yearling spread. His sire is one of the most talked about proven calving ease bulls in the breed today. SEMEN AVAILABLE.
Co-owned with Bieber Red Angus, Leola, SD.*



FRITZ JUSTICE 8013

01/31/08 1A 100.0% FJE/8013 #1255322

BUF CRK PATRIOT M183

VGW JUSTICE 614

VGW M82-FIREFLY 0479

5L HOBO BEN 04-4422

FRITZ CHRIS 6047

FRITZ CRIS 1051

RAAA EPDs

HB	GM	CED	BW	WW	YW	MILK	ME	HPG	CEM	STAY	MB	REA
139	52	12	0.1	88	145	33	0	8	14	10	0.63	0.03

Justice is the powerful growth sire at Accelerated Genetics. He sired many of our top calves the past two years including two of our Pen of Three Bulls at the NWSS this past January. A son, Jeffries Checotah 817C sold in the Mile High Classic Red Angus sale to ABS, and Jeffries Commander 793C was retained in the herd.



TROTTERS STRONGHOLD 156
 10/25/11 1A 100.0% LJT/156 #1496650
 GMRA CITADEL 6109
LJT CITADEL 812
 RCJS JERRI
 TROTTERS ADVANCE 140
LJT PEARL 579
 TROTTER PEARL 312

RAAA EPDs

HB	GM	CED	BW	WW	YW	MILK	ME	HPG	CEM	STAY	MB	REA
103	48	0	6.9	94	138	18	2	11	8	11	0.45	0.33

Stronghold is one of the breed's premier power sires. A top AI sire with Genex, he is off the charts for growth and sports great carcass traits. His progeny excel for sound structure and breed leading type. Last year he sired our \$17,000 high selling heifer calf.

LSF RR EXTEND 2313Z
 01/28/12 1A 100.0% LJRA/2313Z #1547474
 BASIN EXT 1925
BASIN EXT 5233
 BASIN PRIMROSE 2043
 UBAR GRAND PRIX 102
LSF RAINDANCE P4063 U8229
 LSF RAINDANCE K1480 P4063

RAAA EPDs

HB	GM	CED	BW	WW	YW	MILK	ME	HPG	CEM	STAY	MB	REA
96	49	5	-1.5	63	97	26	12	10	8	9	0.04	0.32

**\$25
per
unit**



We purchased Extend 2313Z after he was named the Grand Champion Red Angus bull at the '13 NILE. He is a son of EXT 5233 and out of a daughter of past National Champion bull, Grand Prix. SEMEN AVAILABLE. Co-owned with Ludvigson Stock Farm, MT and Seth Leachman, MT.



TJS COWBOY WAY Y423
 05/26/11 1A 100.0% TJS/Y423 #1466391
 RED LAZY MC STOUT 30S
RED LAZY MC COWBOY CUT 26U
 RED LAZY MC STAR 185M
 LORENZEN JULIAN 3811
 TJS PRIDE T785
 TJS PRIDE P419

RAAA EPDs

HB	GM	CED	BW	WW	YW	MILK	ME	HPG	CEM	STAY	MB	REA
93	49	3	0.4	68	103	17	-7	10	6	9	0.19	0.60

**\$25
per
unit**

Cowboy Way was our pick of the Shick's '13 bull sale, and his first calves are proving to be our best. SEMEN AVAILABLE. Co-owned with TJS Red Angus, Lodge Grass, Montana.



ANDRAS THUNDER A092

11/05/13 1A 100.0% A092/WSA #1671538

ANDRAS THUNDER B106

ANDRAS THUNDER R196

ANDRAS PINETA B73

BFCK CHEROKEE CNYN 4912

MLK CRK LAKINA 502

MLK CRK LAKINA 156

RAAA EPDs

HB	GM	CED	BW	WW	YW	MILK	ME	HPG	CEM	STAY	MB	REA
75	50	6	-1.1	70	109	32	0	10	-2	8	0.40	0.16

Our latest genetic acquisition, Thunder is the exciting top selling outcross bull from Andras' '15 spring bull sale.. Co-owned with Andras Stock Farm, IL, and Dykes Cattle Company, WA.

ANDRAS OUTER LIMIT A032

03/12/13 1A 100.0% WSA/A032 #1648338

HLH OUTER LIMIT 851 4073

WHITE OAKS COPPER 873

WOF MISS COPPERTOP 674

MCPHEE PACIFIC PRIDE 4127

ANDRAS ROSE 9027

ANDRAS RAMBLIN ROSE 7007

RAAA EPDs

HB	GM	CED	BW	WW	YW	MILK	ME	HPG	CEM	STAY	MB	REA
87	50	0	0.5	71	116	33	8	10	6	9	0.52	0.24

**\$25
per
unit**



Outer Limit was one of two bulls we selected from Andras Stock Farm's '14 Bull sale, posting a record of: 76 BW, 106 WR, 107 YR, 122 IMF and 108 REA. Maternally he is out of a daughter of perpetual growth and muscle leader, Pacific Pride. Co-owned with Andras Stock Farm, Manchester, IL.



COLEY'S 503R TRAILBOSS 7170

04/08/07 1A 100.0% ICC/7170 #1185133

PERKS ADVANCE 121R

COLEY'S MOJITO 503R

NER COPPER QUEEN 2657

GILCHRIST CHIEF W515

MKM PRINCESS 3F

MKM PRINCESS 56D

RAAA EPDs

HB	GM	CED	BW	WW	YW	MILK	ME	HPG	CEM	STAY	MB	REA
72	47	1	1.4	61	100	20	1	11	4	8	0.05	-0.13

**\$25
per
unit**

Coley's 503R Trailboss 7170 is a powerful son of growth leader, Coley's Mojito. As a yearling he posted a 17.37 REA! Co-owned with Coley Cattle Company in Birmingham, IA.

Our Latest Herdsires...

JEFFRIES BLUEPRINT 258Z

12/29/12 1A 100.0% JLJ/258Z #1603489

HXC CONQUEST 4405P

C-BAR CONTOUR 107X

BROWN C- ABIGRACE S602

FEDDES BIG SKY R9

BROWN MS BIG SKY U7877

BROWN C- JOLENE S605

RAAA EPDs

HB	GM	CED	BW	WW	YW	MILK	ME	HPG	CEM	ST	MB	REA
138	53	10	-2.9	74	109	18	4	14	2	12	0.85	0.52

Blueprint topped our '14 sale to Accelerated Genetics. He stacks 11 traits in the top one third of the breed and is royally bred. Co-owned with Accelerated Genetics.



ANDRAS JLJ SMART CHOICE R264

09/01/12 1A 100.0% WSA/R264 #1600121

ANDRAS BANDO B120

ANDRAS MR BLACK JEANS R179

ANDRAS AMY B121

**\$25
per
unit**

ANDRAS THUNDER B106

ANDRAS KURUBA R194

ANDRAS KURUBA B71

RAAA EPDs

HB	GM	CED	BW	WW	YW	MILK	ME	HPG	CEM	ST	MB	REA
101	52	7	-1.6	61	106	33	-2	10	3	9	0.63	0.26

Exciting \$14,000 second high seller from the '14 Andras bull sale, Smart Choice is a complete outcross. Co-owned with Andras Stock Farm, IL.

JEFFRIES CHECOTAH 817C

01/06/15 1A 100.0% JLJ/817C #1750203

VGW JUSTICE 614

FRITZ JUSTICE 8013

FRITZ CHRIS 6047

RED FINE LINE MULBERRY 26P

JEFFRIES MS LAKOTA Z11

BASIN LAKOTA 8331

RAAA EPDs

HB	GM	CED	BW	WW	YW	MILK	ME	HPG	CEM	ST	MB	REA
160	52	8	-0.4	93	150	28	2	11	13	13	0.52	0.06

Checotah was a member of our '16 NWSS Pen of Three Bulls and sold in the Mile High Classic sale to ABS in WI.

JEFFRIES REDDINGTON 865C

01/15/15 1A 100.0% JLJ/865C #1750221

ANDRAS IN FOCUS B152

ANDRAS NEW DIRECTION R240

ANDRAS KURUBA B111

RED FINE LINE MULBERRY 26P

JEFFRIES W563

JEFFRIES LA ANN L42-P298

RAAA EPDs

HB	GM	CED	BW	WW	YW	MILK	ME	HPG	CEM	ST	MB	REA
113	51	3	-0.7	75	120	27	-3	14	9	9	0.63	0.10

Reddington 865C was a member of our '16 NWSS Pen of Three bulls and sold in the Mile High Classic sale to Pieper's, NE, and McEntire Red Angus, OK.

**Our '16 NWSS
Pen of Three
Bulls!**



JEFFRIES CHECOTAH 817C...

*Pictured last
December at the
ranch!*



JEFFRIES COMMANDER 793C...



JEFFRIES REDDINGTON 865C...



JEFFRIES RED ANGUS - HERDSIRES



JEFFRIES COMMANDER 793C

01/01/15 1A 100.0% JLJ/793C #1750180

VGW JUSTICE 614

FRITZ JUSTICE 8013

FRITZ CHRIS 6047

BECKTON EPIC U368 KM

JEFFRIES MS TWYLA X764

BASIN SAM 8948

RAAA EPDs

HB	GM	CED	BW	WW	YW	MILK	ME	HPG	CEM	ST	MB	REA
144	52	12	-1.3	83	134	31	-6	10	11	11	0.49	0.38



Commander 793C was a member of out 2016 NWSS Pen of Three Bulls. He posted a 793 AWW, 113 WR, 1285 AYW and 118 YR, with only a 73 BW, and he scanned with a huge 16.2 REA! He was used exclusively at Jeffries and is the service sire for some of the Basin cows selling as well as the sire of several ET matings in the sale. Inquire about unique semen packages available in the spring of '17.

Jeffries Age-Advantaged Red Angus Bulls...



from LOT 1...



...to LOT 72...

...are ready to go to work for you!





JEFFRIES RED ANGUS - AGE ADVANTAGED 18 MONTH OLD BULLS



Herd Bull Prospect...



LOT	JEFFRIES GOLDEN OLY 873C			
1	1/17/2015	JLJ/873C	A-100% AR	#1750256

RED SSS OLY 554T	Performance	
VGW OLY 903	BW	71
VGW TM-DORA 0758	AWW	730
UBAR GOLD CAP 6017	8/1 WT	1515
JEFFRIES U495	8/1 SC	40 cm
JEFFRIES J1394-P257	%IMF	3.86
MPPA: 106.2	REA	14.5

	HBLD	GRID	CED	BW	WW	YW	MILK	ME	HPG	CEM	STAY	MB	YG	CW	REA
EPDs	94	52	4	-3.5	68	113	21	2	9	4	9	0.36	0	33	0.46
Top%	52	6	51	8	20	10	43	62	70	54	72	61	45	22	6



- Golden Oly 873C isn't Lot 1 so he can warm up the sale... if you are looking for a bigtime calving ease bull with performance and style don't miss this stud!

- His dam, U495, has built quite a record for herself, earning a 106.2 MPPA, with a 107 AWR and 104 AYR on five sons. More impressive is the 106 average Ribeye ratio on her sons, including Golden Oly 873C, who posted a 112 REA ratio!

- Selling 1/2 interest and full possession.





JEFFRIES RED ANGUS - AGE ADVANTAGED 18 MONTH OLD BULLS



A pair of 3/4 brothers... Oly 903 x Mulberry!

Lot 2... loaded with many of the good traits this breed is looking for!



LOT 2		JEFFRIES PRIME OLY 890C													
		1/24/2015 JLJ/890C A-100% AR #1750270													
RED SSS OLY 554T VGW OLY 903 VGW TM-DORA 0758 RED FINE LINE MULBERRY 26P BASIN PRIMROSE 8216 BASIN PRIMROSE 2893 MPPA: 106.9										Performance					
										BW		83			
										AWW		789			
										8/1 WT		1590			
										8/1 SC		44 cm			
										%IMF		3.56			
										REA		13.8			
	HBLD	GRID	CED	BW	WW	YW	MILK	ME	HPG	CEM	STAY	MB	YG	CW	REA
EPDs	129	52	4	-1.8	75	131	16	4	11	9	11	0.24	0.08	46	0.28
Top%	14	6	57	25	7	1	82	77	39	3	30	85	77	4	19

- Prime Oly 890C is one of those bulls that has yet to take a bad step! From his exceptional performance, type, structure and testicles he is a complete package.
- His dam, Primrose 8216, is a Mulberry daughter that has rocked the program, earning a 106.9 MPPA and producing one of our top donor cows, Primrose X667. Her Hughes son topped our '12 sale to Kats Red Angus, KS.
- Selling 1/2 interest and full possession.



- Oly 923C is a real eye-catcher! Loaded with performance and muscle he posted a 101 WR, 105 YR and 116 REA ratio.
- His dam, Bonnebell 8410, is a beautiful, productive Mulberry daughter from the famed Basin program in MT. She is a sale feature this year, selling as Lot 113.

LOT 3		JEFFRIES OLY 923C													
		2/4/2015 JLJ/923C A-100% AR #1750301													
RED SSS OLY 554T VGW OLY 903 VGW TM-DORA 0758 RED FINE LINE MULBERRY 26P BASIN BONNEBELL 8410 BASIN BONNEBELL 4225 MPPA: 99.2										Performance					
										BW			83		
										AWW			655		
										8/1 WT			1470		
										8/1 SC			40 cm		
										%IMF			4.25		
										REA			14.6		
	HBLD	GRID	CED	BW	WW	YW	MILK	ME	HPG	CEM	STAY	MB	YG	CW	REA
EPDs	121	51	2	-1.3	65	111	20	6	12	9	12	0.32	0.04	35	0.36
Top%	20	15	79	33	30	13	49	90	33	6	24	68	64	18	11



JEFFRIES RED ANGUS - AGE ADVANTAGED 18 MONTH OLD BULLS



Herd Bull Prospect...

*Lot 4... looks
good no matter
what direction he
is headed!*



LOT		JEFFRIES ONLY DIRECTION 752B													
4		12/25/2014 JLJ/752B A-100% AR #1750142													
ANDRAS IN FOCUS B152 ANDRAS NEW DIRECTION R240 ANDRAS KURUBA B111 BIEBER H HUGHES W109 JEFFRIES MS DYNAMO Z97 BASIN DYNAMO 8359 MPPA: 102.9										Performance					
										BW		66			
										AWW		658			
										8/1 WT		1545			
										8/1 SC		38 cm			
										%IMF		3.92			
										REA		13.1			
	HBLD	GRID	CED	BW	WW	YW	MILK	ME	HPG	CEM	STAY	MB	YG	CW	REA
EPDs	121	51	6	-1.8	69	110	25	-3	13	9	10	0.56	0.16	33	0.27
Top%	19	14	40	25	17	14	14	19	12	5	46	21	95	21	20



- Where are you going to find this much bull with only a 66 BW! Only Direction 752B is a clean made, heavy muscled bull with great looks and structure.
- His dam, Ms Dynamo Z97, has been batting 1000, producing Jeffries Stacked Beef 456A, a Conquest son that sold last year to Kolle Red Angus in TX, for \$10,000. She is royally bred, stacking Hughes W109 with Mulberry and Basin EXT H695.
- Selling 1/2 interest and full possession.





JEFFRIES RED ANGUS - AGE ADVANTAGED 18 MONTH OLD BULLS



Lots 5 & 6... will move your program in the 'right direction'!

**Lot 5... boasts a 127
IMF ratio and a
105 REA ratio!**

LOT 5	JEFFRIES DIRECTION 791B														
	12/31/2014 JLJ/791B A-100% AR #1750178														
ANDRAS IN FOCUS B152 ANDRAS NEW DIRECTION R240 ANDRAS KURUBA B111 RED BCAR WILD CARD RED KBJ MOLLY 1030T RED GOLD-BAR MOLLY RA 130N MPPA: 96.7										Performance					
										BW		76			
										AWW		680			
										8/1 WT		1515			
										8/1 SC		41 cm			
										%IMF		5.73			
										REA		14			
	HBLD	GRID	CED	BW	WW	YW	MILK	ME	HPG	CEM	STAY	MB	YG	CW	REA
EPDs	79	51	8	-2.2	50	83	23	-5	10	7	6	0.88	0.09	17	0.05
Top%	74	10	21	20	79	65	24	13	64	13	94	3	83	69	58



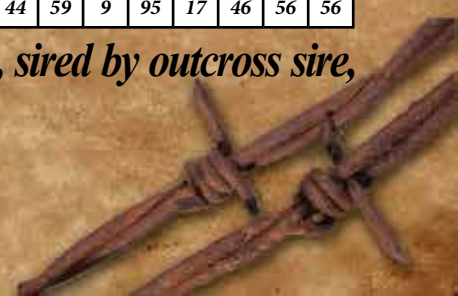
- Dark red, awesome type, 76 BW and -2.2 BW EPD, and a carcass scan through the roof... posting a 127 IMF ratio and 105 REA ratio!



LOT		JEFFRIES DIRECTION 810C													
6		1/4/2015 JLJ/810C A-100% AR #1750196													
ANDRAS IN FOCUS B152 ANDRAS NEW DIRECTION R240 ANDRAS KURUBA B111 BASIN SALUTE R060 BASIN PRIDE 8025 BASIN PRIDE 0503 MPPA: 94.4										Performance					
										BW		79			
										AWW		600			
										8/1 WT		1480			
										8/1 SC		40 cm			
										%IMF		4.43			
										REA		14.6			
	HBLD	GRID	CED	BW	WW	YW	MILK	ME	HPG	CEM	STAY	MB	YG	CW	REA
EPDs	71	51	6	-0.9	47	87	25	0	10	8	6	0.6	0.01	21	0.07
Top%	83	16	39	41	85	58	11	44	59	9	95	17	46	56	56

- You know when you look at a bull and say "he is way better than his record!" Lot 6 is that bull! One thing his record doesn't lie about, is his 79 BW and 14.6 REA with a 109 ratio!

- His dam, Pride 8025, is one of those good foundation Basin cows, sired by outcross sire, Basin Salute R060. She is featured in the sale, selling as Lot 114.



JEFFRIES RED ANGUS - AGE ADVANTAGED 18 MONTH OLD BULLS

Lots 7 & 8... they don't make 'em much stouter!

Lot 7...

**was a member of
our '16 NWSS
Pen of Three!**



LOT		JEFFRIES ON COURSE 794C													
7		1/2/2015 JLJ/794C A-100% AR #1750181													
ANDRAS IN FOCUS B152 ANDRAS NEW DIRECTION R240 ANDRAS KURUBA B111 BIEBER H HUGHES W109 JEFFRIES MS FLOWER Y923 RED KBJ FLOWER 1062 MPPA: 98										Performance					
										BW		89			
										AWW		652			
										8/1 WT		1580			
										8/1 SC		40 cm			
										%IMF		3.93			
										REA		14.6			
	HBLD	GRID	CED	BW	WW	YW	MILK	ME	HPG	CEM	STAY	MB	YG	CW	REA
EPDs	72	50	2	1.9	69	116	19	-5	14	7	6	0.39	0.1	42	0.16
Top%	82	31	73	88	17	8	57	13	7	15	95	51	83	6	37

- On Course 794C was one of the elite few that were selected to be a part of our first-ever NWSS Pen of Three Bulls. Super deep bodied, he posted a 14.6 REA with a 110 ratio!
- His dam is a top young daughter of Bieber H Hughes W109 and goes back to an outcross Canadian foundation.

**Lot 8...
redefines
the
saying...
Wide body!**



LOT 8	JEFFRIES EVERY DIRECTION 730B														
	12/21/2014 JLJ/730B A-100% AR #1750121														
ANDRAS IN FOCUS B152 ANDRAS NEW DIRECTION R240 ANDRAS KURUBA B111 MESSMER PACKER S008 JEFFRIES MS KATY X658 MS ADVANCER OF 4L 89R MPPA: 103.6										Performance					
										BW	82				
										AWW	767				
										8/1 WT	1625				
										8/1 SC	44 cm				
										%IMF	2.78				
										REA	16.3				
	HBLD	GRID	CED	BW	WW	YW	MILK	ME	HPG	CEM	STAY	MB	YG	CW	REA
EPDs	65	49	3	0.9	75	113	23	1	9	4	7	0.29	0.07	38	0.4
Top%	88	48	69	73	7	11	23	52	78	53	90	75	73	11	9

- This slosher has meat coming out his ears!
- Every Direction 730B is as stout and as wide as they come. The natural calf out of our ET donor cow, Ms Katy X658, he posted an awesome 109 WR, 106 YR and 122 REA ratio!
- His dam, X658, has earned her ET donor status with a 105 AWR, 101 AYR and 103.6 MPPA on her 4 calves. She is also the donor dam of Lot 83, a featured halter heifer. Selling 1/2 interest & full possession.



JEFFRIES RED ANGUS - AGE ADVANTAGED 18 MONTH OLD BULLS



Lots 9 & 10... genetics headed in the right 'direction'!

Lot 9...
a lot of bull
for only a
78 BW!



LOT	JEFFRIES DIRECTION 731B														
9	12/21/2014 JLJ/731B A-100% AR #1750122														
ANDRAS IN FOCUS B152 ANDRAS NEW DIRECTION R240 ANDRAS KURUBA B111										Performance					
BASIN EXT 8926										BW	78				
JEFFRIES MS PRIDE Z176										AWW	676				
SIX MILE PRIDE 571U										8/1 WT	1555				
MPPA: 100										8/1 SC	39 cm				
										%IMF	4.26				
										REA	12.7				
HBLD	GRID	CED	BW	WW	YW	MILK	ME	HPG	CEM	STAY	MB	YG	CW	REA	
EPDs	71	49	4	0.8	63	103	27	1	13	7	6	0.44	0.1	33	0.03
Top%	82	37	51	71	34	24	5	45	18	16	95	40	84	21	63

- 731B is another one of those dark red, long and attractive New Direction sons. He started out with only a 78 BW and by sale time should be tipping the scales at over 1600 lbs!



- Bigtime carcass genetics here! 766B posted a 5.74 %IMF scan with a 127 ratio, earning him a 0.80 Marbling EPD ranked in the top 5% of the breed! His performance isn't too shabby either, posting a 779 AWW and 111 WR!

- His dam, Y822, is one of our top cows, earning a 108.7 MPPA!

LOT	JEFFRIES DIRECTION 766B														
10	12/27/2014 JLJ/766B A-100% AR #1750156														
ANDRAS IN FOCUS B152 ANDRAS NEW DIRECTION R240 ANDRAS KURUBA B111										Performance					
SIX MILE INTEGRITY 691W										BW	84				
JEFFRIES MS TPIE Y822										AWW	779				
JEFFRIES W537										8/1 WT	1480				
MPPA: 108.7										8/1 SC	40 cm				
										%IMF	5.74				
										REA	12.2				
HBLD	GRID	CED	BW	WW	YW	MILK	ME	HPG	CEM	STAY	MB	YG	CW	REA	
EPDs	83	50	4	-0.4	67	106	25	-3	12	6	7	0.8	0.36	32	-0.24
Top%	69	25	52	50	23	20	12	18	21	21	88	5	99	23	98

JEFFRIES RED ANGUS - AGE ADVANTAGED 18 MONTH OLD BULLS

Age-advanted bulls that will hold up better during the breeding season!

LOT	JEFFRIES DIRECTION 827C														
11	1/7/2015 JLJ/827C A-100% AR #1750237														
ANDRAS IN FOCUS B152 ANDRAS NEW DIRECTION R240 ANDRAS KURUBA B111 RED SIX MILE SAKIC 832S JEFFRIES W555 MS ADVANCER OF 4L R28P MPPA: 97.7										Performance					
										BW	89				
										AWW	733				
										8/1 WT	1600				
										8/1 SC	41 cm				
										%IMF	4.15				
										REA	12.9				
EPDs	59	47	1	2.6	71	105	24	2	9	10	6	0.35	0.26	36	-0.07
Top%	92	87	86	93	13	22	20	63	81	3	93	61	99	15	85



- One of the smoothest made bulls in the offering, 827C should be mashing the scales down around 1700 lbs. by sale time!

- His dam has previously produced a pair of sons that have sold into Texas, including one last year that sold for \$6,500. She sells this year as Lot 149.



- Boss 854C is one of the more powerful bulls in the offering, posting a 112 WR and 117 YR! He also sports a 15.1 in. REA with a 116 ratio.

- His dam has been a great cow, earning a 107.2 MPPA, with a 109 AWR and 109 AYR on her progeny. Back in '11, her Packer son sold to Krull Ranch in SD.

LOT	JEFFRIES BOSS 854C														
12	1/13/2015 JLJ/854C A-100% AR #1750210														
COLEY'S MOJITO 503R COLEY'S 503R TRAILBOSS 7170 MKM PRINCESS 3F RED BWB ROB ROY 43P RED WRIGHTS 43P LASSIE 737T RED BEAR HILLS LASSIE 37P MPPA: 107.2										Performance					
										BW	83				
										AWW	730				
										8/1 WT	1615				
										8/1 SC	36.5 cm				
										%IMF	4.1				
										REA	15.1				
EPDs	91	48	1	1.7	70	111	21	2	10	5	10	0.18	0.16	39	0.11
Top%	57	66	87	84	16	13	43	56	59	42	44	90	94	10	45



JEFFRIES RED ANGUS - AGE ADVANTAGED 18 MONTH OLD BULLS



Lots 12-14... if you like 'em stout, your'e gonna love these Trailboss sons!

Lot 13...
combines his
756 AWW with
only a 72 BW!



LOT 13		JEFFRIES BOSS 787B													
		12/31/2014 JLJ/787B A-100% AR #1750174													
COLEY'S MOJITO 503R COLEY'S 503R TRAILBOSS 7170 MKM PRINCESS 3F RED SIX MILE UTAH 455U C-BAR BONNIE BELLE X29 TLS BONNE BELLE T701 MPPA: 108.7										Performance					
										BW		72			
										AWW		756			
										8/1 WT		1550			
										8/1 SC		37 cm			
										%IMF		3.52			
										REA		12.9			
	HBLD	GRID	CED	BW	WW	YW	MILK	ME	HPG	CEM	STAY	MB	YG	CW	REA
EPDs	96	47	6	-1.6	63	89	22	-1	10	9	9	-0.06	0.03	20	-0.2
Top%	49	89	37	28	38	53	32	32	66	4	63	99	56	59	97

- Big spread genetics here, Boss 787B posted a 756 AWW and 107 WR with only a 78 BW!

- His dam, X29, is a top young cow we purchased from C-Bar Ranch in KS. She has been cruising along with a 112 AWR on her progeny!



- Top performance in this attractive Trailboss son, Boss 809C posted a 105 WR and 105 YR.

- His dam, X504, is another female that we purchased that has gone on to be one of our best, earning a 103.3 MPPA. Her Trailboss son last year sold to Akers Ranch in TX, for \$5,500.



LOT		JEFFRIES BOSS 809C													
14		1/4/2015 JLJ/809C A-100% AR #1750195													
COLEY'S MOJITO 503R COLEY'S 503R TRAILBOSS 7170 MKM PRINCESS 3F RED DMM BRYLOR THUMP 2T 3J MS BETHANY X504 BUF CRK AMBER M096 MPPA: 103.3										Performance					
										BW		90			
										AWW		739			
										8/1 WT		1490			
										8/1 SC		36.5 cm			
										%IMF		4.1			
										REA		12			
	HBLD	GRID	CED	BW	WW	YW	MILK	ME	HPG	CEM	STAY	MB	YG	CW	REA
EPDs	74	47	1	1.8	66	100	19	0	11	4	9	0.16	0.19	32	-0.31
Top%	79	90	84	86	27	31	58	40	49	61	70	92	97	24	99



JEFFRIES RED ANGUS - AGE ADVANTAGED 18 MONTH OLD BULLS



Lots 15-17... super-stout sons of Trotter's Stronghold!



LOT		JEFFRIES MAGNITUDE 864C													
15		01-15-2015		JLJ/864C		A-100% AR		#1750220							
LJT CITADEL 812										Performance					
TROTTERS STRONGHOLD 156										BW		89			
LJT PEARL 579										AWW		722			
RED SIX MILE PRICELESS 268P										8/1 WT		1410			
SIX MILE WITZEL 533U										8/1 SC		38 cm			
RED SIX MILE WITZEL 333P										%IMF		4.36			
MPPA: 93.1										REA		12.5			
	HBLD	GRID	CED	BW	WW	YW	MILK	ME	HPG	CEM	STAY	MB	YG	CW	REA
EPDs	87	46	4	1.2	62	82	16	0	9	7	10	0.36	0.1	20	-0.22
Top%	71	97	57	88	34	64	78	36	60	12	69	65	86	53	97



- *Magnitude 864C is as stout and easy doing as you can make one in his similar frame! He posted an impressive 722 AWW and 111 WR!*

- *He leads off a set of super stout, extremely sound, good footed sons of Trotter's Stronghold 156, the powerful growth bull at Genex that was a bull test winner in Nevada. Last year he sired our \$17,000 high selling heifer calf to Nine Mile Ranch in WA.*





JEFFRIES RED ANGUS - AGE ADVANTAGED 18 MONTH OLD BULLS

Hold on to something... here come the Stronghold sons!



LOT 16		JEFFRIES STRONGHOLD 825C														
		01-07-2015 JLJ/825C A-100% AR #1750235														
LJT CITADEL 812 TROTTERS STRONGHOLD 156 LJT PEARL 579 RED STEWART PATHFINDER 5L SIX MILE URRISAL 4W RED YY URRISAL 330N ET MPPA: 95.4										<i>Performance</i> BW 82 AWW 621 8/1 WT 1465 8/1 SC 40 cm %IMF 4.15 REA 13.7						
	HBLD	GRID	CED	BW	WW	YW	MILK	ME	HPG	CEM	STAY	MB	YG	CW	REA	
EPDs	87	47	4	0.8	55	77	16	-2	8	6	10	0.34	-0.04	17	0.17	
Top%	71	90	59	84	59	73	81	24	79	17	65	71	27	63	35	

Performance	
BW	82
AWW	621
8/1 WT	1465
8/1 SC	40 cm
%IMF	4.15
REA	13.7

- This guy is built like a tank! Moderate, deep and loaded with muscle, 825C scanned with a 13.7 REA and 103 ratio.
- His dam, 4W, is a Canadian outcross cow from the famed Six Mile Red Angus herd, one of the oldest and most prestigious programs in the North.



LOT 17		JEFFRIES STRONGHOLD 818C														
		01-06-2015 JLJ/818C A-100% AR #1750204														
		LJT CITADEL 812										Performance				
		TROTTERS STRONGHOLD 156										BW		79		
		LJT PEARL 579										AWW		655		
		RED SIX MILE PARK AVE. 392P										8/1 WT		1440		
		SIX MILE SIERRA 825W										8/1 SC		38.5 cm		
		DAISY OF TIR EACHUINN										%IMF		3.68		
		MPPA: 90.0										REA		13.0		
	HBLD	GRID	CED	BW	WW	YW	MILK	ME	HPG	CEM	STAY	MB	YG	CW	REA	
EPDs	76	46	4	0.3	55	72	10	-1	9	4	9	0.25	0.01	13	-0.07	
Top%	82	98	60	77	59	80	98	29	69	45	74	87	47	73	82	

- Lot 17 is one of the most complete bulls in the offering. Besides his added length and smooth lines, he is also the lowest BW son of Stronghold and should be fine on larger heifers.

- His dam is another outcross Six Mile bred cow. In '14, her son sold to Liss Ranch in CO.





JEFFRIES RED ANGUS - AGE ADVANTAGED 18 MONTH OLD BULLS



Herd Bull Prospect...



*Lot 18... jumped through
all the hoops!*

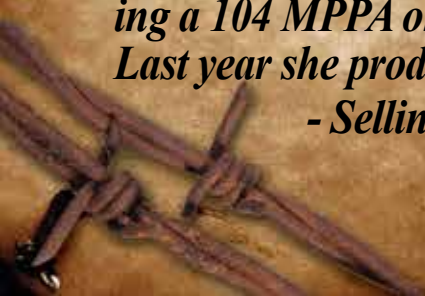
LOT 18		JEFFRIES QUALITY CHOICE 949C															
		2/13/2015		JLJ/949C		A-100% AR		#1750326									
ANDRAS MR BLACK JEANS R179										Performance							
ANDRAS JLJ SMART CHOICE R264										BW		84					
ANDRAS KURUBA R194										AWW		704					
BASIN EXT 8926										8/1 WT		1455					
JEFFIES MS DIXIE Y947										8/1 SC		38 cm					
MS ADVANCER OF 4L RM37										%IMF		3.74					
MPPA: 104										REA		14.3					
	HBLD	GRID	CED	BW	WW	YW	MILK	ME	HPG	CEM	STAY	MB	YG	CW	REA		
EPDs	82	49	4	1.3	68	111	26	8	13	2	8	0.26	-0.05	38	0.40		
Top%	70	35	57	79	21	14	9	96	15	84	78	80	24	12	8		

- Here is a bull that kinda does everything right. Moderate, deep and smooth made, he posted impressive performance figures of: 108 WR, 106 YR and he scanned with a 14.3 in. REA with a 110 ratio.

- He represents the first set of Andras Smart Choice sons to sell. Our pick of the bulls in Andras' '14 sale, Smart Choice is a complete outcross to most, combining Bando, Focus and New Day from the Angus side.

- His dam, Ms Dixie Y947, is the top young EXT 8926 daughter in the herd, earning a 104 MPPA on her progeny with a 106 AWR, 107 AYR and 112 REA average. Last year she produced a herdbull that sold to R & G Cattle in OK, for \$7,000.

- Selling 1/2 interest and full possession.



EFFRIES RED ANGUS - AGE ADVANTAGED 18 MONTH OLD BULLS
Lots 19-21... a 'smart choice' to enhance your genetics!



LOT 19	JEFFRIES SMART CHOICE 871C														
	1/16/2015 JLJ/871C A-100% AR #1750227														
ANDRAS MR BLACK JEANS R179 ANDRAS JLJ SMART CHOICE R264 ANDRAS KURUBA R194 SIX MILE WIND CHILL 828W JEFFRIES MS DREAM GIRL Y832 SIX MILE DREAM GIRL 32W MPPA: 94.3										Performance					
										BW		87			
										AWW		645			
										8/1 WT		1365			
										8/1 SC		38.5 cm			
										%IMF		3.92			
										REA		13.4			
	HBLD	GRID	CED	BW	WW	YW	MILK	ME	HPG	CEM	STAY	MB	YG	CW	REA
EPDs	77	47	3	0.8	52	80	21	-8	8	1	10	0.19	-0.08	19	0.14
Top%	77	80	70	71	74	70	37	5	88	88	51	90	14	63	41

- Long and attractive, Lot 19 offers a very fresh outcross pedigree with new Angus blood on the sire side, and proven Canadian bloodlines on the maternal side.

LOT 20	JEFFRIES SMART CHOICE 903C														
	1/28/2015 JLJ/903C A-100% AR #3502542														
ANDRAS MR BLACK JEANS R179 ANDRAS JLJ SMART CHOICE R264 ANDRAS KURUBA R194 RED SIX MILE SAKIC 832S JEFFRIES MS LASSIE-Y886 SIX MILE LASSIE 321T MPPA: 104										Performance					
										BW		65			
										AWW		600			
										8/1 WT		1340			
										8/1 SC		40 cm			
										%IMF		6.32			
										REA		13.0			
	HBLD	GRID	CED	BW	WW	YW	MILK	ME	HPG	CEM	STAY	MB	YG	CW	REA
EPDs	116	51	6	-2.8	47	73	31	-2	10	8	11	0.89	0.03	10	0.02
Top%	24	14	38	14	85	80	1	24	66	10	30	3	55	84	67



- Bigtime heifer bull with breed leading top 3% Marbling, Lot 20 posted an amazing 6.32 %IMF with a 145 ratio! A maternal brother sold last year to R & G Cattle in OK, for \$6,500.



LOT 21	JEFFRIES SMART CHOICE 945C														
	2/11/2015 JLJ/945C A-100% AR #1750322														
ANDRAS MR BLACK JEANS R179 ANDRAS JLJ SMART CHOICE R264 ANDRAS KURUBA R194 RED 6 MILE FULL THROTTLE171T JEFFRIES MS GLORIA Y934 SIX MILE GLORIA 125T MPPA: 93.1										Performance					
										BW		71			
										AWW		560			
										8/1 WT		1340			
										8/1 SC		39 cm			
										%IMF		4.01			
										REA		10.4			
	HBLD	GRID	CED	BW	WW	YW	MILK	ME	HPG	CEM	STAY	MB	YG	CW	REA
EPDs	100	49	5	-1.8	45	79	24	-1	13	3	10	0.35	0.09	15	-0.3
Top%	43	47	44	25	88	71	20	33	16	68	45	61	83	72	99

- Another top heifer bull, Lot 21 is very complete in his type, kind and muscle pattern... he is stouter than his record!



JEFFRIES RED ANGUS - AGE ADVANTAGED 18 MONTH OLD BULLS



Lots 22 & 23... there is no limit to their genetic leadtime!



LOT 22	JEFFRIES LIMIT 886C														
	1/22/2015 JLJ/886C A-100% AR #1750274														
WHITE OAKS COPPER 873 ANDRAS OUTER LIMIT A032 ANDRAS ROSE 9027 BIEBER H HUGHES W109 JEFFRIES MS DUCHESS A266 RED KBJ DUCHESS 1020U MPPA: 106										Performance					
										BW		87			
										AWW		801			
										8/1 WT		1450			
										8/1 SC		40 cm			
										%IMF		4.3			
										REA		11.9			
	HBLD	GRID	CED	BW	WW	YW	MILK	ME	HPG	CEM	STAY	MB	YG	CW	REA
EPDs	96	49	-1	2.8	81	120	21	5	13	5	10	0.44	0.14	45	0.05
Top%	50	52	95	94	2	5	45	84	16	34	45	40	93	4	60

- One of the top performing bulls in the offering, Lot 22 boasts an 801 AWW with a 115 WR!

- His dam, A266, raised this stud on her first attempt, earning a 106 MPPA and a spot in the herd.

Lot 23... comes from the famed Abigrace tribe!



LOT 23	JEFFRIES LIMIT 880C														
	1/21/2015 JLJ/880C A-100% AR #1750263														
WHITE OAKS COPPER 873 ANDRAS OUTER LIMIT A032 ANDRAS ROSE 9027 BUF CRK THE RIGHT KIND U199 JEFFRIES MS RIGHT A408 BROWN C- ABIGRACE S602 MPPA: 102.8										<i>Performance</i>					
										BW		72			
										AWW		750			
										8/1 WT		1360			
										8/1 SC		38.5 cm			
										%IMF		4.37			
										REA		12.5			
	HBLD	GRID	CED	BW	WW	YW	MILK	ME	HPG	CEM	STAY	MB	YG	CW	REA
EPDs	113	50	5	-0.7	70	111	27	3	12	8	10	0.51	0.1	35	0.16
Top%	27	18	45	43	15	13	5	71	27	10	48	28	83	16	36

- He posted a 108 WR and 106 YR with only a 72 BW!

- His first calf dam, A408, is an ET Right Kind daughter out of Abigrace S602, also the dam of the Contour bull at Accelerated Genetics.



JEFFRIES RED ANGUS - AGE ADVANTAGED 18 MONTH OLD BULLS

Lots 24 & 25... low birth sons of Andras Outer Limit!



Andras Outer Limit A032...
Sire of Lots 22-25!

LOT 24		JEFFRIES LIMIT 855C													
		1/14/2015 JLJ/855C A-100% AR #1750211													
WHITE OAKS COPPER 873 ANDRAS OUTER LIMIT A032 ANDRAS ROSE 9027 RED SIX MILE GRINGE 269X JEFFRIES MS DAY A342 MS ADVANCER OF 4L 69R MPPA: 101.6										Performance					
										BW		77			
										AWW		726			
										8/1 WT		1380			
										8/1 SC		38 cm			
										%IMF		3.00			
										REA		12.8			
	HBLD	GRID	CED	BW	WW	YW	MILK	ME	HPG	CEM	STAY	MB	YG	CW	REA
EPDs	82	47	1	1.3	77	118	24	7	11	7	9	0.04	0.19	42	0.06
Top%	70	77	85	80	5	6	16	95	42	16	73	98	97	6	56



- Lot 24 posted a 726 AWW and 104 WR, 104 YR, and 104 REA ratio... all with only a 77 BW! He is out of a first calf Gringe daughter from our proven VonForrel donor cow, 69R.



LOT 25		JEFFRIES LIMIT 904C													
		1/29/2015 JLJ/904C A-100% AR #1750285													
WHITE OAKS COPPER 873 ANDRAS OUTER LIMIT A032 ANDRAS ROSE 9027 SIX MILE WILD WEST 0913W JEFFRIES MS DAY Z202 MS ADVANCER OF 4L 79R MPPA: 98										Performance					
										BW		71			
										AWW		663			
										8/1 WT		1310			
										8/1 SC		39 cm			
										%IMF		5.25			
										REA		12.9			
	HBLD	GRID	CED	BW	WW	YW	MILK	ME	HPG	CEM	STAY	MB	YG	CW	REA
EPDs	89	49	0	0.7	66	100	29	3	11	5	10	0.64	0.17	31	0.1
Top%	60	38	88	70	27	29	2	73	48	46	51	13	96	27	47

- Lot 25 is a 71 BW heifer bull with a great carcass scan, posting a 118 IMF ratio and a 104 REA ratio! His dam is another first calf Wild West daughter.

JEFFRIES RED ANGUS - AGE ADVANTAGED 18 MONTH OLD BULLS

Lots 26 & 27... will 'extend' your program in the right direction!



LOT	JEFFRIES EXTEND 862C															
26	1/15/2015 JLJ/862C A-100% AR #1750218															
BASIN EXT 5233 LSF RR EXTEND 2313Z LSF RAINDANCE P4063 U8229										Performance						
BASIN EXT 8628 JEFFRIES MS BONNIE X749 BASIN BONNEBELL 8564 MPPA: 97.3										BW	77					
										AWW	659					
										8/1 WT	1575					
										8/1 SC	38 cm					
										%IMF	5.15					
										REA	13.4					
HBLD	GRID	CED	BW	WW	YW	MILK	ME	HPG	CEM	STAY	MB	YG	CW	REA		
EPDs	96	51	3	-0.1	73	115	19	12	10	6	9	0.51	0.01	38	0.16	
Top%	50	14	62	54	10	9	57	99	68	20	61	28	46	11	36	

- Lot 26 did it all, posting figures of: 77 BW, 101 WR, 109 YR, 119 IMF ratio and 103 REA ratio!

- He stacks the great Angus Pathfinder sire, EXT, on both sides of his tabulation.

**Lots 26 & 27...
get their looks from
their sire, Extend,
the '13 NILE
Champion Red Angus
Bull!**



- Another moderate, thick made Extend son, Lot 27 posted a 106 WR, 103 YR and 102 REA ratio!

LOT	JEFFRIES EXTEND 877C															
27	1/20/2015 JLJ/877C A-100% AR #1750260															
BASIN EXT 5233 LSF RR EXTEND 2313Z LSF RAINDANCE P4063 U8229										Performance						
HUST CHIEF SEQUOYA R336 JEFFRIES LADY LUCK X715 BIEBER LADYLUCK 194U MPPA: 101.3										BW	85					
										AWW	687					
										8/1 WT	1355					
										8/1 SC	38 cm					
										%IMF	3.83					
										REA	13.3					
HBLD	GRID	CED	BW	WW	YW	MILK	ME	HPG	CEM	STAY	MB	YG	CW	REA		
EPDs	95	49	4	0.9	75	112	21	13	10	5	10	0.18	-0.06	38	0.27	
Top%	51	50	51	73	7	12	41	99	57	34	51	91	21	12	20	



JEFFRIES RED ANGUS - AGE ADVANTAGED 18 MONTH OLD BULLS

HERDBULL PROSPECT!



LOT 28	JEFFRIES GPS 772B														
	12/28/2014 JLJ/772B A-100% AR #1750161														
ANDRAS IN FOCUS B152 ANDRAS NEW DIRECTION R240 ANDRAS KURUBA B111 BIEBER H HUGHES W109 JEFFRIES MS DAY Z208 MS ADVANCER OF 4L 105R MPPA: 102.8										Performance					
										BW	79				
										AWW	724				
										8/1 WT	1475				
										8/1 SC	39 cm				
										%IMF	7.38				
										REA	12.7				
	HBLD	GRID	CED	BW	WW	YW	MILK	ME	HPG	CEM	STAY	MB	YG	CW	REA
EPDs	94	52	3	1.1	76	117	22	-5	11	7	8	1.29	0.25	41	0
Top%	53	3	66	76	6	7	37	13	37	16	79	1	99	7	70

*Lot 28...
his 7.38 %IMF
is one of the
highest ever
at Jeffries'!*

- Today when you get lost, you just look for directions on your GPS system on your cell phone. Jeffries GPS 772B can also get you back on the right track!
- His 79 BW is accompanied by a 724 AWW and 108 WR. His carcass scan was off the charts, posting a 7.38 %IMF with a 155 ratio and still scanned with a 102 REA ratio! His 1.29 MB EPD ranks him in the top 1% of the breed!
- Selling 1/2 interest and full possession.



JEFFRIES RED ANGUS - AGE ADVANTAGED 18 MONTH OLD BULLS



Lots 29-31... low birth sons of Andras New Direction!



*Lot 29...
can move like
a cat!*

LOT 29		JEFFRIES DIRECTION 783B																	
		12/30/2014 JLJ/783B A-100% AR #1750171																	
ANDRAS IN FOCUS B152 ANDRAS NEW DIRECTION R240 ANDRAS KURUBA B111 SIX MILE WILD WEST 0913W JEFFRIES MS PRECIOUS Z116 SIX MILE PRECIOUS 8W MPPA: 98.3										Performance					BW 67 AWW 660 8/1 WT 1370 8/1 SC 38 cm %IMF 5.66 REA 11.5				
	HBLD	GRID	CED	BW	WW	YW	MILK	ME	HPG	CEM	STAY	MB	YG	CW	REA				
EPDs	93	50	5	-1.4	57	89	27	-8	11	7	9	0.72	0.18	21	-0.23				
Top%	54	29	41	31	58	54	6	4	43	16	73	8	96	57	98				



- Lot 29 should have plenty of friends when sale day rolls around! This bigtime calving ease New Direction son can really move out, and his feet are some of the best in the offering.

- Note his 5.66 %IMF... it comes with a 119 ratio and earned him a .72 MB EPD ranked in the top 8% of the breed!





JEFFRIES RED ANGUS - AGE ADVANTAGED 18 MONTH OLD BULLS



Lots 30 & 31... low birth New Direction sons with Marbling!



LOT 30	JEFFRIES DIRECTION 753B														
	12/25/2014 JLJ/753B A-100% AR #1750143														
ANDRAS IN FOCUS B152 ANDRAS NEW DIRECTION R240 ANDRAS KURUBA B111 RED TER-RON RELOAD 703T SIX MILE & CO LASSIE 384X SIX MILE LASSIE 377P MPPA: 91.3										Performance					
										BW		78			
										AWW		636			
										8/1 WT		1390			
										8/1 SC		41 cm			
										%IMF		4.64			
										REA		13.8			
	HBLD	GRID	CED	BW	WW	YW	MILK	ME	HPG	CEM	STAY	MB	YG	CW	REA
EPDs	70	49	3	-0.7	48	77	19	-11	11	4	7	0.64	0.00	15	0.00
Top%	84	34	70	43	84	76	54	1	44	51	87	13	41	73	71

- Lot 30 is a deep ribbed, easy doing kind of bull. He was only 78 lbs. at birth, and his carcass scan put him in the top 13% of the breed for MB!



LOT 31		JEFFRIES DIRECTION 767B													
		12/28/2014		JLJ/767B		A-100% AR		#1750157							
ANDRAS IN FOCUS B152 ANDRAS NEW DIRECTION R240 ANDRAS KURUBA B111 LSF COMBINATION A301M BIEBER NOLINAGE 159U BIEBER NOLINAGE 10051 MPPA: 101.5										Performance					
										BW		77			
										AWW		775			
										8/1 WT		1415			
										8/1 SC		42 cm			
										%IMF		4.54			
										REA		13.0			
	HBLD	GRID	CED	BW	WW	YW	MILK	ME	HPG	CEM	STAY	MB	YG	CW	REA
EPDs	54	50	0	0.3	75	113	16	3	11	3	5	0.75	0.19	38	0.10
Top%	95	18	87	62	8	11	78	72	42	78	96	7	97	12	48

- Lot 31 is a very docile New Direction son with a 775 AWW, 110 WR, and he started out with only a 77 BW! His 0.75 Marbling EPD ranks him in the top 7% of the breed.



Lots 32 & 33... Fritz Justice sons with a little more fuel in the tank!



- Lot 32 is definitely one that will add some pounds and value to a calf crop! He posted a 779 AWW and 111 WR with only a 78 BW!

- His EPD profile has 7 traits in the top 25% or better in the breed.

Lot 32...

check out his

84 WW & 130 YW

EPDs!

LOT		JEFFRIES JUSTICE 749B													
32		12/25/2014 JLJ/749B A-100% AR #1750139													
VGW JUSTICE 614 FRITZ JUSTICE 8013 FRITZ CHRIS 6047 RED WILBAR PREDATOR 315X JEFFRIES MS FLOWER Z134 RED KBJ FLOWER 1062T MPPA: 106.3										Performance					
										BW		78			
										AWW		779			
										8/1 WT		1565			
										8/1 SC		40 cm			
										%IMF		4.61			
										REA		12.7			
	HBLD	GRID	CED	BW	WW	YW	MILK	ME	HPG	CEM	STAY	MB	YG	CW	REA
EPDs	119	50	4	2.8	84	130	23	-5	10	8	11	0.53	0.22	51	0.09
Top%	14	29	36	74	7	9	72	14	45	73	12	23	88	10	37

LOT 33		JEFFRIES JUSTICE 768B													
		12/28/2014 JLJ/768B A-100% AR #1750158													
VGW JUSTICE 614 FRITZ JUSTICE 8013 FRITZ CHRIS 6047 RED KBJ TORNADO 001T JEFFRIES W588 RED KBJ LADY ROSETTE 876R MPPA: 101.5										Performance					
										BW		92			
										AWW		764			
										8/1 WT		1525			
										8/1 SC		41 cm			
										%IMF		4.68			
										REA		12.9			
	HBLD	GRID	CED	BW	WW	YW	MILK	ME	HPG	CEM	STAY	MB	YG	CW	REA
EPDs	100	49	6	0.9	65	102	26	-7	10	9	9	0.57	0.26	32	-0.1
Top%	44	48	36	73	29	26	8	6	57	6	69	20	99	23	88



- These Justice calves are extra long and smooth, the way we like 'em! Lot 33 is no exception, posting an impressive 764 AWW and 108 WR.

- His dam, W588, has been a good cow for us, earning a 101.5 MPPA and producing a replacement daughter in the herd sired by Rollin Deep. In '13, her son sold to Summit Farms in IA.



JEFFRIES RED ANGUS - AGE ADVANTAGED 18 MONTH OLD BULLS

Lots 34-36... big EPD spread genetics by Fritz Justice!



LOT		JEFFRIES JUSTICE 763B													
34		12/27/2014 JLJ/763B A-100% AR #1750153													
VGW JUSTICE 614 FRITZ JUSTICE 8013 FRITZ CHRIS 6047 SIX MILE ITEGRITY 691W JEFFRIES MS ROSELLA Y845 SIX MILE ROSELLA 430U MPPA: 97.3										Performance					
										BW		84			
										AWW		718			
										8/1 WT		1525			
										8/1 SC		37 cm			
										%IMF		4.91			
										REA		15.1			
	HBLD	GRID	CED	BW	WW	YW	MILK	ME	HPG	CEM	STAY	MB	YG	CW	REA
EPDs	129	50	8	-0.4	67	105	27	-2	9	11	12	0.48	0.13	32	0.18
Top%	13	32	22	49	22	21	6	27	73	1	26	34	90	24	32

- Lot 34 has a great record of: 102 WR, 102 YR, 109 %IMF ratio and 113 REA ratio!

LOT 35		JEFFRIES JUSTICE 807C													
		1/4/2015 JLJ/807C A-100% AR #1750193													
VGW JUSTICE 614 FRITZ JUSTICE 8013 FRITZ CHRIS 6047 MESSMER JERICHO W041 JEFFRIES MS DAY Z60 JEFFRIES MULBERRY W544 MPPA: 96										Performance					
										BW		71			
										AWW		635			
										8/1 WT		1505			
										8/1 SC		40 cm			
										%IMF		4.97			
										REA		12.6			
	HBLD	GRID	CED	BW	WW	YW	MILK	ME	HPG	CEM	STAY	MB	YG	CW	REA
EPDs	155	52	10	-1.7	71	115	27	0	11	11	13	0.7	0.11	36	0.05
Top%	4	5	11	27	12	8	6	38	36	1	12	10	88	14	60



- Lot 35 is a very long, smooth made heifer bull with a -1.7 BW to 115 YW EPD spread! He has 10 traits in the top 14% or better in the breed!



LOT 36	JEFFRIES JUSTICE 720B														
	12/16/2014 JLJ/720B A-100% AR #1750111														
VGW JUSTICE 614 FRITZ JUSTICE 8013 FRITZ CHRIS 6047 JEFFRIES WEST 830Y JEFFRIES MS FLOWER A341 JEFFRIES MS FLOWER Y923 MPPA: 96.4										Performance					
										BW		71			
										AWW		616			
										8/1 WT		1410			
										8/1 SC		40 cm			
										%IMF		4.00			
										REA		10.8			
	HBLD	GRID	CED	BW	WW	YW	MILK	ME	HPG	CEM	STAY	MB	YG	CW	REA
EPDs	113	48	8	0	68	109	24	-1	13	10	9	0.29	0.23	35	-0.12
Top%	27	54	22	56	19	16	22	35	18	2	60	76	99	17	91

- Lot 36 is a moderate tank! His dam is a maternal sister to Lot 7, Jeffries On Course, the New Direction son that was a part of our Denver Pen.

JEFFRIES RED ANGUS - AGE ADVANTAGED 18 MONTH OLD BULLS

Lots 37-39... Justice sons for Calving Ease and Marbling!



LOT		JEFFRIES JUSTICE 853C													
37		1/12/2015 JLJ/853C A-100% AR #1750209													
VGW JUSTICE 614												Performance			
FRITZ JUSTICE 8013												BW		77	
FRITZ CHRIS 6047												AWW		639	
RED GOLD-BAR RIP ET ML 116R												8/1 WT		1380	
RED GOLD-BAR BARBARA R 115U												8/1 SC		38 cm	
RED R & M 107K BARBARA 63R												%IMF		4.28	
MPPA: 100												REA		12.1	
	HBLD	GRID	CED	BW	WW	YW	MILK	ME	HPG	CEM	STAY	MB	YG	CW	REA
EPDs	120	48	9	-1	60	89	28	-3	8	7	12	0.39	0.14	22	-0.09
Top%	20	62	18	39	48	52	3	20	87	12	22	53	93	55	87

- Lot 37 is a heifer bull with top a top 20% Herdbuilder index!

LOT		JEFFRIES JUSTICE 838C													
38		1/10/2015 JLJ/838C A-100% AR #1750248													
VGW JUSTICE 614 FRITZ JUSTICE 8013 FRITZ CHRIS 6047 SIX MILE ITEGRITY 691W JEFFRIES MS LADY Y877 JEFFRIES W588 MPPA: 101.3											Performance				
											BW		80		
											AWW		727		
											8/1 WT		1370		
											8/1 SC		39 cm		
											%IMF		5.35		
											REA		13.5		
	HBLD	GRID	CED	BW	WW	YW	MILK	ME	HPG	CEM	STAY	MB	YG	CW	REA
EPDs	141	51	7	-0.7	66	105	30	-6	10	9	13	0.69	0.15	32	0.05
Top%	8	16	26	43	26	21	1	8	56	5	11	10	94	24	58



- Great indexes across the board: 103 WR, 104 YR, 118 %IMF and 101 REA!



LOT		JEFFRIES JUSTICE 733B													
39		12/21/2014 JLJ/733B A-100% AR #1750124													
VGW JUSTICE 614 FRITZ JUSTICE 8013 FRITZ CHRIS 6047 RED GOLD-BAR RIP ET ML 116R RED GOLD-BAR LACIER 1181U RED GOLD-BAR LACIE H 206P MPPA: 99.2										Performance					
										BW		65			
										AWW		678			
										8/1 WT		1335			
										8/1 SC		39 cm			
										%IMF		5.28			
										REA		12.9			
	HBLD	GRID	CED	BW	WW	YW	MILK	ME	HPG	CEM	STAY	MB	YG	CW	REA
EPDs	127	50	9	-2.2	60	89	28	-7	9	8	12	0.58	0.1	20	-0.11
Top%	15	32	14	21	48	53	4	6	82	10	26	19	86	61	89

- Lot 39 is a heifer bull deluxe, with a 65 BW, 9 CED, -2.2 BW EPD and 117 %IMF ratio!



JEFFRIES RED ANGUS - AGE ADVANTAGED 18 MONTH OLD BULLS

Lot 40 & 41... Vision sons with all the data!

Lot 40...
ranked #1 in
contemporaries for
WR, YR & IMF!



LOT 40		JEFFRIES WIDE ANGLE 922C													
		2/4/2015 JLJ/922C A-100% AR #1750300													
LJC MISSION STATEMENT P27 LEACHMAN VISION A278Z BROWN MS VICILA M7796 SIX MILE WILD WEST 0913W JEFFRIES MS MARTA Z111 SIX MILE MARTA 862W MPPA: 105.1										Performance					
										BW		83			
										AWW		724			
										8/1 WT		1520			
										8/1 SC		39 cm			
										%IMF		6.88			
										REA		12.1			
	HBLD	GRID	CED	BW	WW	YW	MILK	ME	HPG	CEM	STAY	MB	YG	CW	REA
EPDs	129	51	3	0	71	107	23	1	12	6	13	0.82	0.01	34	0.49
Top%	13	9	64	57	14	17	24	51	29	30	13	4	50	19	4

- Wow check out the data on this good-looking rascal! Wide Angle 922C blew the doors off, posting a 128 WR, 124 YR and 137 IMF ratio!

- The dam, Z111, is a young Wild West daughter

that already produced a replacement heifer back in the herd by Oly 903.

- Note the granddam, 862W, is also the dam of our #1 WW & YW bull in the offering, Jeffries Stronghold 859C, selling as Lot 44.

-Selling 1/2 interest and full possession.



LOT		JEFFRIES VISION 872C													
41		1/17/2015 JLJ/872C A-100% AR #1750229													
LJC MISSION STATEMENT P27 LEACHMAN VISION A278Z BROWN MS VICILA M7796										Performance					
BIEBER H HUGHES W109 JEFFRIES MS Z114 BASIN CHINOOK 8459 MPPA: 108.0										BW		72			
										AWW		633			
										8/1 WT		1455			
										8/1 SC		37 cm			
										%IMF		5.21			
										REA		12.4			
	HBLD	GRID	CED	BW	WW	YW	MILK	ME	HPG	CEM	STAY	MB	YG	CW	REA
EPDs	137	50	5	-1.8	71	104	23	8	14	5	14	0.51	-0.03	29	0.54
Top%	9	18	42	27	13	22	25	96	10	48	8	28	28	32	3

- Lot 41 has all the right data in all the right places! His 72 BW is combined with a 112 WR, 107 YR and 104 IMF ratio!

- His dam, Z114, is one of our top young cows, earning a 108 MPPA. She is a daughter of Basin Chinook 8459, the powerful EXT 5233 daughter that sold in '14 to Nine Mile Ranch in WA for \$14,500.

JEFFRIES RED ANGUS - AGE ADVANTAGED 18 MONTH OLD BULLS

Add Muscle with these Calving Ease Vision sons...

Lot 42...
his .57 REA EPD
ranks in the
top 3%!



LOT 42		JEFFRIES VISION 895C													
		1/27/2015 JLJ/895C A-100% AR #1750277													
LJC MISSION STATEMENT P27 LEACHMAN VISION A278Z BROWN MS VICILA M7796										Performance					
BASIN EXT 8926 JEFFRIES MS LADY R Z169 RED KBJ LADY ROSETTE 876R MPPA: 100										BW AWW 8/1 WT 8/1 SC %IMF REA		78 563 1325 42 cm 3.91 13.8			
	HBLD	GRID	CED	BW	WW	YW	MILK	ME	HPG	CEM	STAY	MB	YG	CW	REA
EPDs	93	48	5	-1.2	48	76	24	7	13	3	10	0.1	-0.26	14	0.57
Top%	54	58	41	35	82	76	17	96	13	76	55	95	2	76	3

- Lot 42 is very stout... you can definitely see his breed leading muscle, and he is a heifer bull to boot!
- His dam, Z169, is a top young daughter of Basin EXT 8926. Last year her Conquest son sold to Elizabeth Wright in OK, for \$7,500.

Lot 43...
his .67 REA EPD
ranks in the
top 1%!



- Lot 43 is a bigtime heifer bull with loads of muscle! He posted a 14.2 REA with a 112 ratio, earning him an elite top 1% rank, with a 0.67 REA EPD!

LOT 43		JEFFRIES VISION 894C													
		1/26/2015 JLJ/894C A-100% AR #1750276													
LJC MISSION STATEMENT P27 LEACHMAN VISION A278Z BROWN MS VICILA M7796 RED SOO LINE MOMENTUM 7051 JEFFRIES MS MONU Z89 MS ADVANCER OF 4L 106R MPPA: 93.1										Performance					
										BW		74			
										AWW		578			
										8/1 WT		1290			
										8/1 SC		40 cm			
										%IMF		4.38			
										REA		14.2			
	HBLD	GRID	CED	BW	WW	YW	MILK	ME	HPG	CEM	STAY	MB	YG	CW	REA
EPDs	87	49	4	-1.3	59	92	13	1	12	1	9	0.19	-0.15	23	0.67
Top%	63	42	51	33	49	47	93	46	28	91	66	90	6	51	1



JEFFRIES RED ANGUS - AGE ADVANTAGED 18 MONTH OLD BULLS



Herd Bull Prospect...

*Lot 44...
the heaviest
bull in the
offering,
he posted
an amazing
845 AWW!*



LOT		JEFFRIES POWERHOUSE 859C													
44		1/14/2015 JLJ/859C A-100% AR #1750215													
LJT CITADEL 812										Performance					
TROTTERS STRONGHOLD 156															
LJT PEARL 579										BW			95		
										AWW			843		
RED SIX MILE AVIATOR 217P										8/1 WT			1755		
SIX MILE MARTA 862W										8/1 SC			38 cm		
RED BAR-E-L MARTA 39H										%IMF			4.08		
MPPA: 103.1										REA			14.9		
	HBLD	GRID	CED	BW	WW	YW	MILK	ME	HPG	CEM	STAY	MB	YG	CW	REA
EPDs	116	47	1	4.8	87	124	19	0	9	11	12	0.28	0.03	50	0.45
Top%	29	70	69	87	7	18	62	15	81	2	33	91	14	15	2

- Powerhouse 859C is exactly what his name implies... he is the standout bull in the offering! Number one at both weaning and yearling, he posted an impressive 843 AWW, and 130 WR!

His dam, Marta 862W, is a 103.1 MPPA Aviator daughter that can rock with the best of them! Her Hughes daughter, Z114, is the dam of Lot 41.

- Selling 1/2 interest and full possession.



JEFFRIES RED ANGUS - AGE ADVANTAGED 18 MONTH OLD BULLS

Lots 45-50... Stronghold sons that will mash the scales!

LOT	JEFFRIES STRONGHOLD 847C															
45	1/11/2015 JLJ/847C A-100% AR #1750255															
LJT CITADEL 812 TROTTERS STRONGHOLD 156 LJT PEARL 579								Performance								
RED T-K SUM-MIT 28T								BW	90							
SIX MILE BARBIE 819W								AWW	816							
RED ROSE HILL BARBIE 3T								8/1 WT	1695							
MPPA: 103.1								8/1 SC	37 cm							
								%IMF	4.43							
								REA	15.0							
HBLD	GRID	CED	BW	WW	YW	MILK	ME	HPG	CEM	STAY	MB	YG	CW	REA		
EPDs	71	48	-2	5.5	86	127	13	-3	10	4	8	0.41	0.17	53	0.37	
Top%	83	73	96	99	1	2	92	18	58	53	74	46	95	1	11	



- Lot 45 leads off a set of 1/2 brothers like none other raised here at Jeffries'! These Stronghold sons are powerful, yet extremely sound and correct. This guy posted a 126 WR, 120 YR, 103 IMF and 115 REA!



LOT	JEFFRIES STRONGHOLD 823C															
46	01-07-2015 JLJ/823C A-100% AR #1750233															
LJT CITADEL 812 TROTTERS STRONGHOLD 156 LJT PEARL 579								Performance								
LSF JBOB EXPECTATION 6034S								BW	88							
JEFFRIES MS PRIMROSE X667								AWW	800							
BASIN PRIMROSE 8216								8/1 WT	1710							
MPPA: 108.0								8/1 SC	43 cm							
								%IMF	4.81							
								REA	13.3							
HBLD	GRID	CED	BW	WW	YW	MILK	ME	HPG	CEM	STAY	MB	YG	CW	REA		
EPDs	113	50	-1	3.9	93	138	18	5	11	5	12	0.65	0.12	57	0.08	
Top%	37	31	95	99	1	1	65	84	27	24	35	16	89	1	52	

- Lot 46 posted a 114 WR, 111 YR and 106 IMF ratio! He is out of our elite ET donor dam, Ms Primrose X667, also the dam of the halterbroke heifer selling as Lot 82.

LOT	JEFFRIES STRONGHOLD 806C															
47	01-04-2015 JLJ/806C A-100% AR #1750192															
LJT CITADEL 812 TROTTERS STRONGHOLD 156 LJT PEARL 579								Performance								
RED FINE LINE MULBERRY 26P								BW	92							
BASIN DYNAMO 8359								AWW	706							
BASIN DYNAMO 3016								8/1 WT	1570							
MPPA: 104.6								8/1 SC	40 cm							
								%IMF	5.06							
								REA	14.2							
HBLD	GRID	CED	BW	WW	YW	MILK	ME	HPG	CEM	STAY	MB	YG	CW	REA		
EPDs	113	49	1	1.8	74	109	15	0	11	10	11	0.68	0.13	37	0.27	
Top%	36	45	83	93	6	13	85	39	36	1	47	13	92	9	21	



- Lot 47 comes from one of the top cows in the program, Basin Dynamo 8359. He posted one of the best carcass scans with a 112 IMF ratio and 106 REA ratio!



JEFFRIES RED ANGUS - AGE ADVANTAGED 18 MONTH OLD BULLS



Lots 48-50... powerful Stronghold sons built to cover lots of country!



LOT 48	JEFFRIES STRONGHOLD 811C														
	01-05-2015 JLJ/811C A-100% AR #1750197														
LJT CITADEL 812 TROTTERS STRONGHOLD 156 LJT PEARL 579										Performance					
RED SIX MILE SAKIC 832S										BW	99				
SIX MILE SYRINGA 0906W										AWW	804				
RED SIX MILE SYRINGA 263T										8/1 WT	1570				
MPPA: 106.2										8/1 SC	37 cm				
										%IMF	4.14				
										REA	15.0				
	HBLD	GRID	CED	BW	WW	YW	MILK	ME	HPG	CEM	STAY	MB	YG	CW	REA
EPDs	95	47	-3	4.9	86	119	14	3	9	9	11	0.34	0.07	47	0.16
Top%	61	90	99	99	1	4	89	67	62	3	47	71	77	2	35

- Awesome performance with a 804 AWW, 114 WR, 105 YR, and 15 in. REA with a 112 ratio!

LOT 49	JEFFRIES STRONGHOLD 813C														
	01-05-2015 JLJ/813C A-100% AR #1750199														
LJT CITADEL 812 TROTTERS STRONGHOLD 156 LJT PEARL 579										Performance					
RED GOLD-BAR TANTALIZE R 122										BW	90				
JEFFRIES W599										AWW	778				
RED KBJ LADY BIRD 896T										8/1 WT	1570				
MPPA: 102.2										8/1 SC	41 cm				
										%IMF	3.80				
										REA	13.9				
	HBLD	GRID	CED	BW	WW	YW	MILK	ME	HPG	CEM	STAY	MB	YG	CW	REA
EPDs	97	47	1	3	72	99	16	-7	9	6	11	0.31	-0.02	33	0.2
Top%	58	90	86	98	9	28	76	6	64	13	45	76	33	16	29

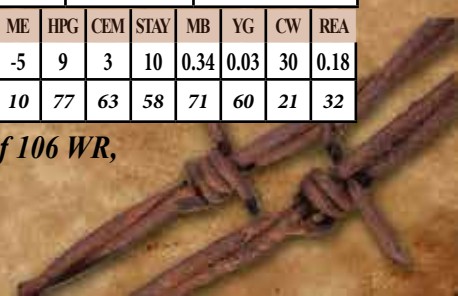


- Another top performer, Lot 49 posted a 778 AWW, 110 WR, 102 YR, and 104 REA ratio! A maternal brother, Jeffries Extra 306A, was one of the top herdbulls in '14 and sold to Horsley Red Angus in OK.



LOT 50	JEFFRIES STRONGHOLD 878C														
	01-20-2015 JLJ/878C A-100% AR #1750261														
LJT CITADEL 812 TROTTERS STRONGHOLD 156 LJT PEARL 579										Performance					
RED LAZY MC SMASH 41N										BW	95				
SIX MILE DREAM GIRL 32W										AWW	687				
RED YY DREAM 391N										8/1 WT	1455				
MPPA: 101.5										8/1 SC	38 cm				
										%IMF	4.58				
										REA	14.5				
	HBLD	GRID	CED	BW	WW	YW	MILK	ME	HPG	CEM	STAY	MB	YG	CW	REA
EPDs	77	46	0	3.2	69	95	16	-5	9	3	10	0.34	0.03	30	0.18
Top%	81	95	93	99	15	37	79	10	77	63	58	71	60	21	32

- Lot 50 is one of the stoutest boned bulls you will find! He too posted a fabulous record of 106 WR, 108 YR, 106 IMF and 111 REA!



JEFFRIES RED ANGUS - AGE ADVANTAGED 18 MONTH OLD BULLS

Lots 51 - 53... more Stronghold sons for putting on the pounds!



LOT		JEFFRIES STRONGHOLD 815C														
51		01-05-2015 JLJ/815C A-100% AR #1750201														
LJT CITADEL 812 TROTTERS STRONGHOLD 156 LJT PEARL 579 RED FINE LINE MULBERRY 26P SIX MILE DIXIE 0935W RED STEWART DIXIE 607S MPPA: 101.5											Performance					
											BW		96			
											AWW		703			
											8/1 WT		1470			
											8/1 SC		38 cm			
											%IMF		4.77			
											REA		12.6			
	HBLD	GRID	CED	BW	WW	YW	MILK	ME	HPG	CEM	STAY	MB	YG	CW	REA	
EPDs	115	48	0	3.7	76	114	14	-5	9	10	12	0.41	0.08	43	0.05	
Top%	34	70	92	99	4	8	88	12	73	1	30	53	78	3	59	

- If you sell your calves at weaning, these are the bulls that will sire the pounds! Lot 51 ranks in the top 4% for WW, the top 8% for YW, and the top 3% for CW!

LOT		JEFFRIES STRONGHOLD 770B													
52		12-28-2014 JLJ/770B A-100% AR #1750160													
LJT CITADEL 812 TROTTERS STRONGHOLD 156 LJT PEARL 579 LORENZEN CATALYST 6454 JEFFRIES W606 MS ADVANCER OF 4L 106R MPPA: 86.9											Performance				
											BW		96		
											AWW		593		
											8/1 WT		1515		
											8/1 SC		37 cm		
											%IMF		4.71		
											REA		10.9		
	HBLD	GRID	CED	BW	WW	YW	MILK	ME	HPG	CEM	STAY	MB	YG	CW	REA
EPDs	97	47	0	5.2	70	108	10	2	9	7	12	0.38	0.19	42	-0.24
Top%	48	88	91	99	15	17	98	60	75	15	27	56	97	6	98



- There is no doubt that Lot 52 is a Stronghold son... he is thick and powerful! Note his 70 WW and 108 YW!



LOT		JEFFRIES STRONGHOLD 882C														
53		01-21-2015 JLJ/882C A-100% AR #119														
LJT CITADEL 812 TROTTERS STRONGHOLD 156 LJT PEARL 579 BASIN DATELINE 5955 BR BASIN CENTURIA 8609 BASIN CENTURIA 6313 MPPA: 104.0											Performance					
											BW		102			
											AWW		770			
											8/1 WT		1550			
											8/1 SC		46 cm			
											%IMF		5.25			
											REA		14.2			
	HBLD	GRID	CED	BW	WW	YW	MILK	ME	HPG	CEM	STAY	MB	YG	CW	REA	
EPDs	109	49	5	1.2	80	109	18	1	11	7	10	0.55	0.03	35	0.39	
Top%	42	57	46	88	2	13	67	45	34	10	57	27	56	11	11	

- Out of a top Basin cow, Lot 53 posted indexes of: 119 WR, 107 YR, 122 IMF and 109 REA! His dam sells as Lot 111.



JEFFRIES RED ANGUS - AGE ADVANTAGED 18 MONTH OLD BULLS



Lots 54 & 55... powerhouse bulls to turn out with your cows!



**Lot 54... the
'Front Cover' bull!**

LOT		JEFFRIES CONQUEST 755B													
54		12/26/2014 JLJ/755B A-100% AR #1750145													
BECKTON JULIAN GG B571 HXC CONQUEST 4405P HXC ELLIE MAY MA638 RED SIX MILE GRINGE 269X JEFFRIES MS DIXIE A396 MS ADVANCER OF 4L RM37 MPPA: 97.2										Performance					
										BW		90			
										AWW		651			
										8/1 WT		1445			
										8/1 SC		37.5 cm			
										%IMF		6.60			
										REA		11.0			
	HBLD	GRID	CED	BW	WW	YW	MILK	ME	HPG	CEM	STAY	MB	YG	CW	REA
EPDs	107	50	5	1.5	69	106	18	4	12	4	11	0.92	0.23	35	-0.22
Top%	34	22	45	82	18	20	70	80	26	61	38	2	99	17	97

- Lot 54 just happens to be the bull pictured on the front cover of the catalog this year! With a 6.69 %IMF and 146 ratio, he ranks in the top 2% of the breed with a 0.92 MB EPD!

LOT		JEFFRIES BOSS 739B													
55		12/23/2014 JLJ/739B A-100% AR #1750130													
COLEY'S MOJITO 503R COLEY'S 503R TRAILBOSS 7170 MKM PRINCESS 3F RED WILDMAN DENALI 19L SIX MILE EMPRESS 201T RED SIX MILE EMPRESS 592R MPPA: 106.6										Performance					
										BW		82			
										AWW		617			
										8/1 WT		1490			
										8/1 SC		38 cm			
										%IMF		4.30			
										REA		10.5			
	HBLD	GRID	CED	BW	WW	YW	MILK	ME	HPG	CEM	STAY	MB	YG	CW	REA
EPDs	82	46	3	0.7	49	73	24	-1	11	7	9	0.13	0.13	15	-0.57
Top%	69	97	69	69	82	80	22	31	47	14	62	94	90	74	99



- Lot 55 is one of the stoutest bulls in the offering... the data doesn't always tell the whole story!



JEFFRIES RED ANGUS - AGE ADVANTAGED 18 MONTH OLD BULLS

Lots 56 & 57... Cowboy Way sons that are the cowboy kind!

Lot 56...
he has positive
ratios across
the board!



LOT 56		JEFFRIES COWBOY WAY 912C													
		2/1/2015 JLJ/912C A-100% AR #1750293													
RED LAZY MC COWBOY CUT 26U TJS COWBOY WAY Y423 TJS PRIDE T785 RED SIX MILE SAKIC 832S JEFFRIES W562 RED GOLD-BAR FIRST LADY R 11 MPPA: 96.9										Performance					
										BW		95			
										AWW		706			
										8/1 WT		1385			
										8/1 SC		40 cm			
										%IMF		4.52			
										REA		13.9			
	HBLD	GRID	CED	BW	WW	YW	MILK	ME	HPG	CEM	STAY	MB	YG	CW	REA
EPDs	99	48	4	0.5	66	93	16	-6	9	8	10	0.23	-0.05	26	0.23
Top%	45	74	57	66	27	44	80	8	74	6	54	86	24	42	25

- Lot 56 never missed a step, posting a record of: 109 WR, 104 YR, 105 IMF and 107 REA!

- His dam, W562, is a Sakic daughter that produced four replacement heifers before this stud.

Lot 57...
has the muscle
and the toolbox
to get the job done!



LOT 57		JLC COWBOY WAY 940C													
		JLJ/940C A-100% AR #3530647													
RED LAZY MC COWBOY CUT 26U TJS COWBOY WAY Y423 TJS PRIDE T785 LORENZEN CATALYST 6454 JEFFRIES W596 MS 12L HIGH MARK OF 4L R84P MPPA: 96										Performance					
										BW AWW 8/1 WT 8/1 SC %IMF REA		85 631 1295 39 cm			
	HBLD	GRID	CED	BW	WW	YW	MILK	ME	HPG	CEM	STAY	MB	YG	CW	REA
EPDs	102	48	5	-0.1	59	88	14	-2	11	8	10	0.17	-0.06	22	0.2
Top%	41	73	48	55	49	56	91	27	49	10	49	92	18	54	29

- Lot 57 is one of the stout bulls in the sale... loaded with muscle and rib.

- His dam, W596, produced an Oly son that sold last year to Gordon Beef in OK, for \$8,000.



JEFFRIES RED ANGUS - AGE ADVANTAGED 18 MONTH OLD BULLS



Herd Bull Prospect...

***Lot 58...
sports a
1.14 MB
EPD!***



LOT		JEFFRIES PRIME DIRECTION 867C														
58		1/16/2015 JLJ/867C A-100% AR #1750223														
ANDRAS IN FOCUS B152 ANDRAS NEW DIRECTION R240 ANDRAS KURUBA B111 LORENZEN CATALYST 6454 JEFFRIES W589 LSF JLJ KARI S409 MPPA: 100.7											Performance					
											BW		83			
											AWW		665			
											8/1 WT		1345			
											8/1 SC		39 cm			
											%IMF		7.16			
											REA		11.8			
	HBLD	GRID	CED	BW	WW	YW	MILK	ME	HPG	CEM	STAY	MB	YG	CW	REA	
EPDs	90	52	5	-0.4	61	99	24	3	10	9	7	1.14	0.2	29	-0.18	
Top%	58	5	46	49	45	33	18	70	64	5	86	1	98	33	96	

- With a 7.16 %IMF and 166 ratio, Prime Direction 867C has bolted into the upper echelons of the breed for Marbling, with a 1.14 EPD ranked in the elite top 1% of the breed!

***- A maternal brother by Rollin Deep sold last year to Akers Ranch in TX, for \$6,500,
- Selling 1/2 interest and full possession.***



JEFFRIES RED ANGUS - AGE ADVANTAGED 18 MONTH OLD BULLS

Lots 59 & 60... New Direction sons for use on heifers!

Lot 59...
comes from a
calving ease
cow family!



LOT 59		JEFFRIES DIRECTION 797C													
		1/3/2015 JLJ/797C A-100% AR #1750183													
ANDRAS IN FOCUS B152 ANDRAS NEW DIRECTION R240 ANDRAS KURUBA B111 BIEBER H HUGHES W109 JEFFRIES MS QUEEN Y930 BASIN RED QUEEN 8630 MPPA: 98.6										Performance					
										BW		73			
										AWW		578			
										8/1 WT		1325			
										8/1 SC		38.5 cm			
										%IMF		4.73			
										REA		12.4			
	HBLD	GRID	CED	BW	WW	YW	MILK	ME	HPG	CEM	STAY	MB	YG	CW	REA
EPDs	87	50	5	-0.2	63	98	21	-4	12	7	8	0.60	0.13	28	-0.04
Top%	63	32	44	54	36	33	45	17	26	18	84	17	91	33	79

- Lot 59 is a long and clean made bull that is very complete.

- His dam has produced two replacement heifers and last year, her ET son was a featured herdull, Jeffries Extra 629B, and sold to Texas for \$5,500.

Jeffries Ms Jolene Z243, a full sister to Lot 60's dam, sold in the '15 Mile High Classic Sale to B Good Cattle in TX and C-Bar in KS, for \$26,500!



- Check out the EPD spread of -2.5 BW to 102 YW, and a top 11% MB EPD!

- His dam is an ET Contour full sister to our top young donor cow as well as the \$26,500 female we sold in '15 in Denver!

LOT 60		JEFFRIES DIRECTION 727B													
		12/21/2014 JLJ/727B A-100% AR #1750118													
ANDRAS IN FOCUS B152 ANDRAS NEW DIRECTION R240 ANDRAS KURUBA B111 C-BAR CONTOUR 107X JEFFRIES MS JOLYN Z247 BROWN MS BIG SKY U7877 MPPA: 98.4										Performance					
										BW		67			
										AWW		652			
										8/1 WT		1305			
										8/1 SC		37 cm			
										%IMF		4.50			
										REA		12.6			
	HBLD	GRID	CED	BW	WW	YW	MILK	ME	HPG	CEM	STAY	MB	YG	CW	REA
EPDs	95	52	8	-2.5	62	102	26	-1	12	6	8	0.67	0.07	27	0.16
Top%	51	7	23	17	41	27	8	37	33	26	84	11	76	37	36



JEFFRIES RED ANGUS - AGE ADVANTAGED 18 MONTH OLD BULLS



Lots 61-63... Moderate & Stout sons of Extend!

LOT		JEFFRIES EXTEND 897C													
61		1/28/2015 JLJ/897C A-100% AR #1750279													
BASIN EXT 5233 LSF RR EXTEND 2313Z LSF RAINDANCE P4063 U8229 MESSMER PACKER S008 JEFFRIES MS LEAT X626 JEFF LEAT L58-P284 MPPA: 101.3										Performance					
										BW	67				
										AWW	581				
										8/1 WT	1330				
										8/1 SC	39 cm				
										%IMF	3.88				
										REA	13.9				
EPDs	HB	GR	CE	BW	WW	YW	MILK	ME	HPG	CEM	STAY	MB	YG	CW	REA
92	49	5	-0.9	63	98	22	10	9	2	10	0.2	-0.19	27	0.58	
Top%	56	33	50	40	36	35	33	99	73	83	47	90	4	39	2



- With a 67 BW, Lot 61 is a heifer bull deluxe loaded with muscle and shape! His 0.58 REA EPD puts him among the top 2% of the breed!



LOT		JEFFRIES EXTEND 925C													
62		2/5/2015 JLJ/925C A-100% AR #1750303													
BASIN EXT 5233 LSF RR EXTEND 2313Z LSF RAINDANCE P4063 U8229 RED SIX MILE MASTERMIND 490U C-BAR ABIGRACE X32 C-BAR & BROWN ABIGRACE T705 MPPA: 95.6										Performance					
										BW	73				
										AWW	538				
										8/1 WT	1340				
										8/1 SC	38 cm				
										%IMF	4.11				
										REA	12.1				
EPDs	HB	GR	CE	BW	WW	YW	MILK	ME	HPG	CEM	STAY	MB	YG	CW	REA
108	49	4	-1.3	55	83	21	6	9	6	12	0.35	-0.06	18	0.04	
Top%	33	49	59	33	66	65	38	89	76	21	24	61	19	67	63

- Another top calving ease bull, Lot 62 is extra long and sharp made. These Extend calves are very consistent... and their calves will be too! Note the dam stems from the famed Abigrace cow family.

LOT		JEFFRIES EXTEND 869C													
63		1/16/2015 JLJ/869C A-100% AR #1750225													
BASIN EXT 5233 LSF RR EXTEND 2313Z LSF RAINDANCE P4063 U8229 RED SIX MILE SAKIC 832S C-BAR ABIGRACE X40 BROWN C- A502M ABIGRACE R544 MPPA: 100										Performance					
										BW	60				
										AWW	507				
										8/1 WT	1295				
										8/1 SC	38 cm				
										%IMF	4.19				
										REA	10.3				
EPDs	HB	GR	CE	BW	WW	YW	MILK	ME	HPG	CEM	STAY	MB	YG	CW	REA
104	48	3	-0.9	65	95	22	9	8	10	11	0.19	-0.06	25	0.1	
Top%	38	60	61	40	28	40	32	99	86	3	38	90	21	44	49



- Lot 63 is very similar to Lot 62, and they both stem from the Abigrace tribe!



EFFRIES RED ANGUS - AGE ADVANTAGED 18 MONTH OLD BULLS

Lots 64-66... Proven Red Angus Genetics!



LOT		JEFFRIES PEERLESS 868C													
64		1/16/2015 JLJ/868C A-100% AR #1750224													
BECKTON JULIAN GG B571											Performance				
CRS DIAMND PEERLESS 9017											BW		80		
MS CASEY 575											AWW		709		
RED BRYLOR NEW TREND 22											8/1 WT		1395		
RED BRYLOR PRISCILLA 304S											8/1 SC		40 cm		
RED WIL-SEL PRISCILLA R. 21K											%IMF		4.86		
MPPA: 99.2											REA		13.0		
	HBLD	GRID	CED	BW	WW	YW	MILK	ME	HPG	CEM	STAY	MB	YG	CW	REA
EPDs	133	49	15	-4.1	43	66	20	-3	10	10	11	0.40	0.05	4	0.04
Top%	11	51	1	5	92	88	51	19	56	2	37	49	65	92	61

- Lot 60 sports the best calving ease numbers in the offering, with a 15 CED and 10 CEM, ranked in the top 1-2% of the breed respectively. He is an ET out of Priscilla 304S, the powerful donor featured as Lot 116.

LOT 65		JEFFRIES PACKER 831C														
		1/9/2015 JLJ/831C A-100% AR #1750241														
MESSMER JOSHUA 019P MESSMER PACKER S008 MESSMER MILLIE 124P PERKS ADVANCER 9088 MS ADVANCER OF 4L R87P HMY SUPER STARESS 503 MPPA: 115.2											Performance					
											BW		83			
											AWW		594			
											8/1 WT		1255			
											8/1 SC		41 cm			
											%IMF		3.89			
											REA		12.8			
	HBLD	GRID	CED	BW	WW	YW	MILK	ME	HPG	CEM	STAY	MB	YG	CW	REA	
EPDs	78	49	2	2.3	74	114	18	12	9	1	10	0.36	0	41	0.46	
Top%	75	44	78	91	8	10	68	99	72	92	57	58	41	7	6	



- Lot 65 is a lone ET son of the highly proven Messmer Packer S008, and out of our 115 MPPA VonForrel donor cow, Ms Advancer of 4L R87P. Check out the Growth and Muscle!



LOT 66		JEFFRIES CONQUEST 830C													
		1/8/2015 JLJ/830C A-100% AR #1750240													
BECKTON JULIAN GG B571 HXC CONQUEST 4405P HXC ELLIE MAY MA638 SIX MILE WILD WEST 0913W JEFFRIES MS GOLD CUP A404 JEFFRIES LAKINA U474 MPPA: 94.8										Performance					
										BW		68			
										AWW		587			
										8/1 WT		1310			
										8/1 SC		36 cm			
										%IMF		4.62			
										REA		12.6			
	HBLD	GRID	CED	BW	WW	YW	MILK	ME	HPG	CEM	STAY	MB	YG	CW	REA
EPDs	129	49	10	-2.9	53	82	26	1	12	5	12	0.47	0.05	15	0.1
Top%	14	33	12	13	72	66	10	53	27	48	17	36	65	73	49

- Sleep easy at night when you turn Lot 66 out with your heifers! This Conquest son posted a 68 BW, and ranks in the top %s for Herdbuilder, Gridmaster, CED, BW, Milk, and Stayability!



JEFFRIES RED ANGUS - AGE ADVANTAGED 18 MONTH OLD BULLS



Lots 67 -69... the last of the Integrity & Wild West sons!

LOT	JEFFRIES ITEGRITY 900C														
67	1/28/2015 JLJ/900C A-100% AR #1750282														
RED TOWAW INDEED 104H SIX MILE ITEGRITY 691W SIX MILE MARTA 138T RED HIPS EL GRANDE 9R RED KBJ INATEX 1055U RED KBJ INATEX 969P MPPA: 91.3										Performance					
										BW	62				
										AWW	536				
										8/1 WT	1300				
										8/1 SC	36 cm				
										%IMF	3.69				
										REA	9.3				
	HBLD	GRID	CED	BW	WW	YW	MILK	ME	HPG	CEM	STAY	MB	YG	CW	REA
EPDs	100	46	4	-2.6	41	65	23	-12	8	3	12	0.06	0.17	5	-0.56
Top%	44	95	56	16	94	90	24	1	94	76	19	97	95	91	99



- What we have come to expect from Six Mile Integrity sons... Lot 67 is a calving ease dream, posting a 62 BW and a -2.6 BW EPD! Keep all his daughters!



LOT	JEFFRIES WILD WEST 884C														
68	1/22/2015 JLJ/884C A-100% AR #1750268														
RED SIX MILE MASTERMIND 854M SIX MILE WILD WEST 0913W JCC ELORA 45S RD TER-RON FULLY LOADED 540R SIX MILE BAYBERRY 150T RED SIX MILE BAYBERRY 498P MPPA: 95										Performance					
										BW	66				
										AWW	573				
										8/1 WT	1235				
										8/1 SC	38 cm				
										%IMF	4.2				
										REA	11.6				
	HBLD	GRID	CED	BW	WW	YW	MILK	ME	HPG	CEM	STAY	MB	YG	CW	REA
EPDs	92	46	-2	0.9	52	69	17	-9	11	4	12	0.28	0.02	12	-0.05
Top%	55	97	96	73	72	85	77	3	36	61	24	78	50	80	80

- The last Wild West sons to sell, Lot 68 and 69 are twin brothers with an all Canadian outcross Six Mile pedigree.

LOT	JEFFRIES WILD WEST 885C														
69	1/22/2015 JLJ/885C A-100% AR #1750271														
RED SIX MILE MASTERMIND 854M SIX MILE WILD WEST 0913W JCC ELORA 45S RD TER-RON FULLY LOADED 540R SIX MILE BAYBERRY 150T RED SIX MILE BAYBERRY 498P MPPA: 95										Performance					
										BW	67				
										AWW	565				
										8/1 WT	1205				
										8/1 SC	37.5 cm				
										%IMF	6.54				
										REA	10.5				
	HBLD	GRID	CED	BW	WW	YW	MILK	ME	HPG	CEM	STAY	MB	YG	CW	REA
EPDs	92	46	-2	0.9	52	69	17	-9	11	4	12	0.28	0.02	12	-0.05
Top%	55	97	96	73	72	85	77	3	36	61	24	78	50	80	80



- Lot 69 is the twin brother to Lot 68.



JEFFRIES RED ANGUS - AGE ADVANTAGED 18 MONTH OLD BULLS

Lots 70 & 71... the last of our Age-Advantaged bulls!



LOT 70		MLCRA MASSEY'S COOLIDGE C003													
		3/11/2015 MLCRA/C003 A-100% AR #1750444													
BIEBER ROUGH RIDER 10712 BIEBER ROOSEVELT W384 BIEBER SHEBA 9602 LCC STERLING B055M BIEBER RED BEVERLY 148T BIEBER REDBEVERLY 8027 MPPA: 96.6											Performance				
											BW	83			
											AWW	668			
											8/1 WT	1180			
											8/1 SC	39 cm			
											%IMF	5.27			
											REA	10.4			
	HBLD	GRID	CED	BW	WW	YW	MILK	ME	HPG	CEM	STAY	MB	YG	CW	REA
EPDs	95	46	3	2	62	89	13	1	11	6	11	0.4	0.23	26	-0.29
Top%	51	92	63	89	39	52	92	49	35	28	42	51	99	41	99

- From the Massey's in Cabool, MO, Lot 70 posted a 106 WR and 121 %IMF ratio!

LOT		JEFFRIES CONQUEST 802C													
71		1/3/2015 JLJ/802C A-100% AR #1750188													
BECKTON JULIAN GG B571 HXC CONQUEST 4405P HXC ELLIE MAY MA638 BUF CRK THE RIGHT KIND U199 JEFFRIES MS KIND A418 C-BAR ABIGRACE W9100 MPPA: 98.4											Performance				
											BW	52			
											AWW	648			
											8/1 WT	1205			
											8/1 SC	38 cm			
											%IMF	4.66			
											REA	13.2			
	HBLD	GRID	CED	BW	WW	YW	MILK	ME	HPG	CEM	STAY	MB	YG	CW	REA
EPDs	151	51	16	-5.5	55	83	25	0	12	7	13	0.6	0.02	11	0.17
Top%	5	12	1	1	64	65	15	40	34	17	15	18	54	82	34



- As we were doing the catalog, Lot 71's DNA results came back with a problem on both his parents so we submitted a new sample and should have the results on or before sale day.



**Thanks for attending the Jeffries bull sale...
don't go yet, the females are next!**



JEFFRIES RED ANGUS - AGE ADVANTAGED 18 MONTH OLD BULLS



Herd Bull Prospect...



*Lot 72...
we can't
sell all
the good ones
first!*

LOT 72	JEFFRIES HOLD ON 848C														
	01-11-2015 JLJ/848C A-100% AR #1750205														
LJT CITADEL 812 TROTTERS STRONGHOLD 156 LJT PEARL 579 LEACHMAN END CUT 1383G SIX MILE PRECIOUS 8W RED JEWEL PRECIOUS 25P MPPA: 98.5											Performance				
											BW	77			
											AWW	648			
											8/1 WT	1240			
											8/1 SC	40 cm			
											%IMF	3.52			
											REA	10.8			
	HBID	GRID	CED	BW	WW	YW	MILK	ME	HPG	CEM	STAY	MB	YG	CW	REA
EPDs	93	46	2	2.4	65	91	15	-5	9	7	11	0.28	0.06	27	-0.04
Top%	63	95	75	96	23	44	83	12	69	11	54	81	74	29	78

- Wow... where has this stud been. Hold On 848C is what we like to call, "A little man!" He is everything you want in a bull... thick, big testicles, masculine, docile... he just puts it all in a little more moderate package!

- His dam, Precious 8W, stacks foundation Leachman bloodlines, None Heavier and Grand Canyon in her tabulation. Last year her son sold to Dry Creek Cattle Co. in OK.





EFFRIES RED ANGUS - ADDED VALUE PROGRAMS

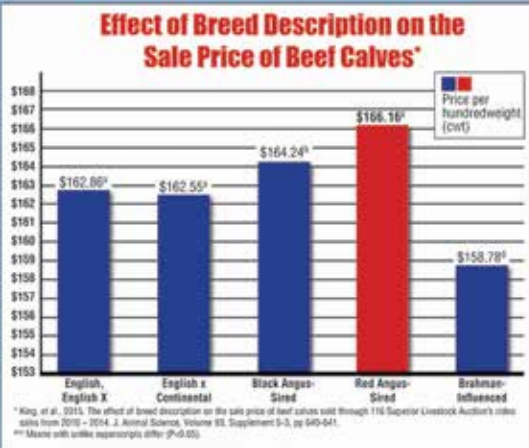


Achieve it!

RETURN ON INVESTMENT

Independent research shows Red Angus-sired calves sold for a higher price than all other breed groups.

Red Angus bulls make a positive difference in your breeding program's bottom line.



Invest in your future today!

Ranch Tested. Rancher Trusted.

Red Angus

RedAngus.org
(940) 387-3502



Red Angus Pro-Cow

Pro-Cow is a tool used by the Red Angus Association of America to identify replacement-quality females. Only females enrolled in the FCCP will be eligible to be labeled as Pro-Cows, therefore ensuring at least 50% Red Angus bloodlines.

How to label females as Pro-Cow:

- Enroll calf crop in the Feeder Calf Certification Program (FCCP).
- Purchase 99-cent Pro-Cow tags or have the Pro-Cow logo imprinted on your FCCP tag.



RedAngus.org • (940) 387-3502



Keep the Tags – Keep the Premiums!

FCCP yellow-tagged calves qualify exclusively for these Red Angus grids:



Choice⁺
Premium Red Angus Grid



G.O. RED
RED ANGUS GRID



Enroll your calves today – Free enrollment and only 99¢ per tag.

Feeder Calf Certification Program

- Traceability to at least 50% Red Angus genetics
- Source verified to ranch of origin
- Group age



Allied Access*

- Source verified to ranch of origin
- Group age

*Not eligible for Choice+ or G.O. Red Grids



Contact us today and take advantage of these VALUE-ADDED OPTIONS.

Ranch Tested. Feedlot Trusted.

Red Angus

RedAngus.org
(940) 387-3502

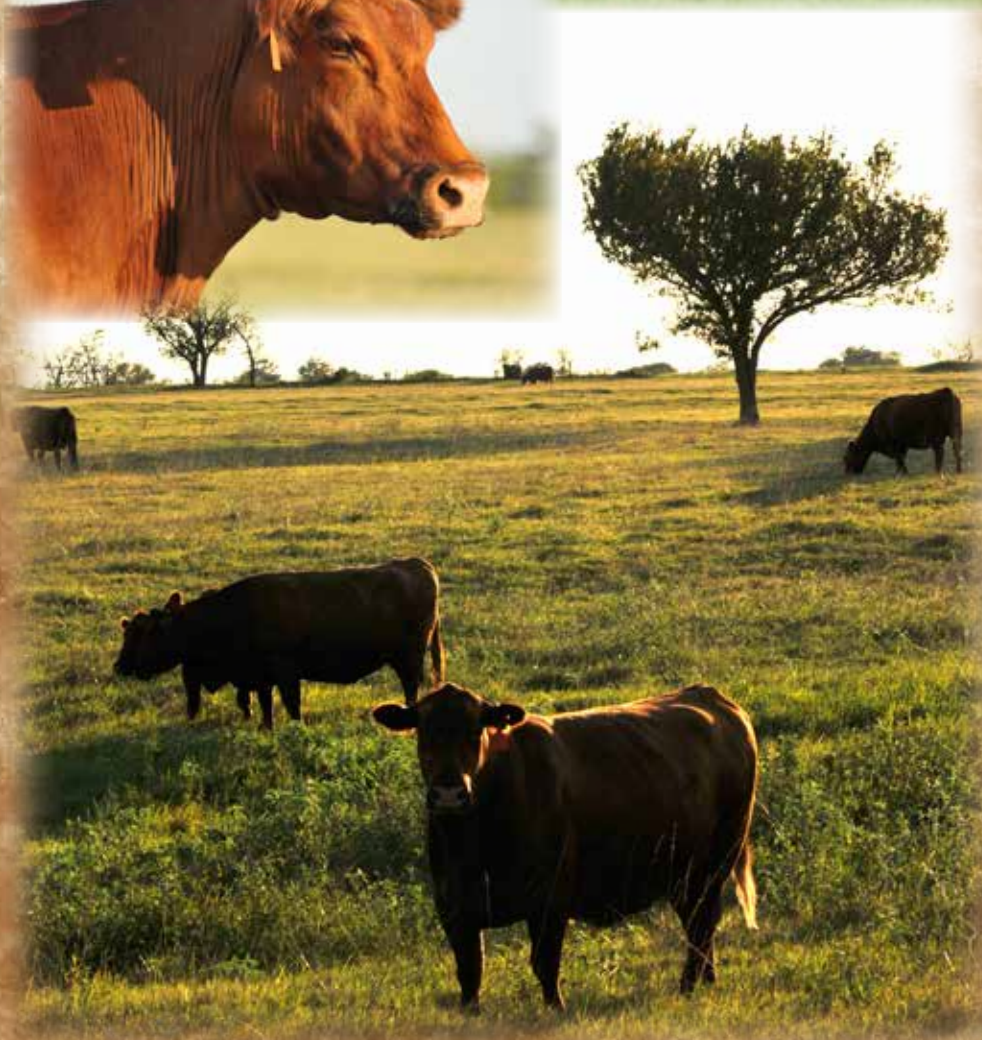




JEFFRIES RED ANGUS - THE HOTTEST BREED GOING!



RED ANGUS FEMALES...
the difference makers in the cattle industry!



**Don't miss
your
chance to
get involved
with the
hottest
breed in the
industry!**

**Jeffries
Red Angus
Females...
Lots 81 - 158**



Lots 81-86... the best of our Open Heifers **They are all halterbroke and ready to go!**



*Lot 81...
 she is the kind
 you can design
 a program
 around!*

- This one was a hard one for the Jeffries' crew to let go of! Ms Jo C15 offers a bigtime genetic package, and the heifer matches her data!

- Her dam, Ms Jo Z246, is a member of our elite ET donor program. Purchased from C-Bar in KS, she is by Accelerated Genetics sire, Contour 107X, and maternally is out of a Big Sky x Major League bred dam going back to the famed Jaylo cow at Hueftle's in NE. We sold the pick of our 2yr old heifers in the '14 Mile High Classic sale, going to B Good Cattle Co. in TX,

and C-Bar Red Angus in KS, for \$26,500, and they selected a full sister to Ms Jo Z246! A pair of pregnant recipients carrying her ET progeny sell as Lots 133 & 134.

- Retaining the right to two (2) ET flushes with a minimum of four (4) good embryos per flush, at buyers convenience and our expense.

LOT		JEFFRIES MS JO C15													
81		12/21/2015 JLJ/C15 A-100% AR #PENDING													
BIEBER ROUSE SAMURAI X22 BIEBER SPARTACUS A193 BIEBER TILLY 233U C-BAR CONTOUR 107X JEFFRIES MS JO Z246 BROWN MS BIG SKY U7877 MPPA: 100										Performance BW AWW WR 64					
	HBLD	GRID	CED	BW	WW	YW	MILK	ME	HPG	CEM	STAY	MB	YG	CW	REA
EPDs			8	-3.9	63	98	21	7	11	4	12	0.85	0.03	23	0.26
Top%															

*Lot 82...
she has the
mail too!*



LOT 82		JEFFRIES MS PRIMORSE C28													
		12/23/2015 JLJ/C28 A-100% AR #PENDING													
BIEBER ROUSE SAMURAI X22		Performance													
BIEBER SPARTACUS A193		BW													
BIEBER TILLY 233U		AWW													
LSF JBOB EXPECTATION 6034S		WR													
JEFFRIES MS PRIMROSE X667		ET													
BASIN PRIMROSE 8216															
MPPA: 108.0															
HBLD	GRID	CED	BW	WW	YW	MILK	ME	HPG	CEM	STAY	MB	YG	CW	REA	
EPDs		6	-2.4	71	112	25	9	13	7	13	0.85	0.12	33	0.18	
Top%															

- Ms Primrose C28 has a very promising future ahead of her... she is the kind that will make a great cow when your done showing her!

- From the heart of our ET program, she is out of Ms Primrose X667, a Expectation x Mulberry bred cow

that is one of our elite ET donors, earning a 108 MPPA! Lot 82's maternal brother, Jeffries Stronghold 818C, is a featured herdbull selling as Lot 46!



Ref. Sire - Bieber Spartacus A193...

BIEBER SPARTACUS A193												
3/05/13			1A 100.0%			RAB/A193			#1617230			
LCC CHEYENNE B221L												
BIEBER ROUSE SAMURAI X22												
GHR MARITA R31												
LCOC HIGH NOON A093R												
BIEBER TILLY 233U												
BIEBER TILLY 7334												
RAAA EPDs												
HB	GM	CED	BW	WW	YW	MILK	ME	HPG	CEM	STAY	MB	REA
127	53	8	-4.8	63	96	21	9	10	5	12	0.97	0.21

Spartacus A193 is the exciting new herdsire at Jeffries', posting a yearling record of 100 WR, 109 YR, 127 IMF and 102 REA. This spring, he sired the high seller in Bieber's Spring Bull Sale. SEMEN AVAILABLE. Co-owned with Bieber Red Angus, Leola, SD, and Accelerated Genetics, WI.

Lot 83...

**deep cherry red
and deep!**

LOT	JEFFRIES MS KATY C53													
83	12/21/2015	JLJ/C53	A-100% AR	#PENDING										
HXC CONQUEST 4405P C-T THE QUEST 1103 C-T TINA 0972					Performance									
MESSMER PACKER S008 JEFFRIES MS KATY X658 MS ADVANCER OF 4L 89R MPPA: 103.6					BW		78							
					AWW									
					WR		ET							

	HBLD	GRID	CED	BW	WW	YW	MILK	ME	HPG	CEM	STAY	MB	YG	CW	REA
EPDs			6	0.6	69	101	17	3	8	0	8	0.50	0.07	31	0.19
Top%															

- You have to love and appreciate the massive rib cage and shape on this dark cherry red female!

- Ms Katy C53 is no accident... rather a result of our extensive ET program. Her donor dam, X658, is one of the

best in the herd, and she is also the dam of Lot 8, Jeffries Every Direction 730B... don't miss him!

Lot 84...

**stacks two of the
premier sires
in the breed!**

LOT	JEFFRIES MS LANA C95													
84	12/31/2015	JLJ/C95	A-100% AR	#PENDING										
BECKTON JULIAN GG B571 HXC CONQUEST 4405P HXC ELLIE MAY MA638					Performance									
BIEBER H HUGHES W109 JEFFRIES LANA B564 RED KBJ LANA 873U MPPA: 100					BW		55							
					AWW									
					WR									

	HBLD	GRID	CED	BW	WW	YW	MILK	ME	HPG	CEM	STAY	MB	YG	CW	REA
EPDs			8	-1.4	70	105	17	-1	10	5	14	0.49	0.12	30	-0.03
Top%															

- Ms Lana C95 is a moderate, easy made heifer with perfect type and a wonderful disposition. She would be great for a young kid just getting started in the business.

- Her pedigree is stacked with goodness, including her popular sire, Conquest, and her maternal grandsire, Hughes W109.



Lot 85...
*her breed leading
 looks come
 naturally!*

LOT 85	JEFFRIES MS EXTEND D199													
	1/28/2016 JLJ/D199 A-100% AR #PENDING													
BASIN EXT 5233 LSF RR EXTEND 2313Z LSF RAINDANCE P4063 U8229 RED FINE LINE MULBERRY 26P JEFFRIES MULBERRY W544 4L MS RAMBO 323 R35N MPPA: 98.0										Performance				
										BW AWW WR	72			

	HBLD	GRID	CED	BW	WW	YW	MILK	ME	HPG	CEM	STAY	MB	YG	CW	REA
EPDs			3	-0.6	61	94	20	5	12	9	12	0.29	-0.06	25	0.10
Top%															

- Ms Extend D199 is a real looker... long and clean, and that attitude of "I know I look good!"

- She is bred to look this way, stacking Extend, the '13 NILE Champion Bull, with Mulberry and Rambo!

Lot 86...
*her dam is a full
 sister to
 TJS Berry Cherry!*



LOT 86	JEFFRIES MS HONESTY D223													
	2/01/2016 JLJ/d223 A-100% AR #PENDING													
WHITE OAKS COPPER 873 ANDRAS OUTER LIMIT A032 ANDRAS ROSE 9027 RED FINE LINE MULBERRY 26P TJS RED HONESTY X0199 TJS RED HONESTY MA521 MPPA: 100										Performance				
										BW AWW WR	81			

	HBLD	GRID	CED	BW	WW	YW	MILK	ME	HPG	CEM	STAY	MB	YG	CW	REA
EPDs			0	0.9	74	117	24	5	12	5	12	0.45	0.14	41	0.25
Top%															

- Ms Honesty D223 has extra volume and muscle shape!
 - Her dam is a full sister to TJS Berry Cherry at Shick's in MT, going back to their famed donor, TJS Red Honesty MA521.



Foundation Red Angus cows from the Basin Reds herd in MT!

Lot 105... is an elite ET donor... and so is her daughter!



- Lakota 8331 earned her elite ET donor status with a 105.8 MPPA. Her daughter, Lakota Z11, is also a donor cow at Jeffries' and the dam of new ABS sire, Jeffries Checotah 817C.

- She is AI bred on 3/24/16 to Jeffries Reddington 865C. Pasture exposed 4/5 - 5/24 to Andras Smart Choice R264. Examined safe to the AI date and due 1/01/2017.

LOT 105	BASIN LAKOTA 8331														
	3/14/2008			DES/8331			A-100% AR			#1262302					
BASIN EXT 1925 BASIN EXT 5233 BASIN PRIMROSE 2043 BASIN LOGAN 0882 BASIN LAKOTA 3005 BASIN LAKOTA 0331												Progeny Performance			
												Avg BR		97	
												Avg WR		108	
												Avg YR			
												MPPA		105.8	
	HBLD	GRID	CED	BW	WW	YW	MILK	ME	HPG	CEM	STAY	MB	YG	CW	REA
EPDs	121	49	7	-1.7	56	79	31	9	10	9	12	0.53	-0.12	14	0.14
Top%	17	30	26	26	55	67	3	95	55	8	22	21	8	71	35

Lot 106... she earned her walking rights with a 105.8 MPPA!



LOT		BASIN LAURA 8524													
106		2/5/2008		DES/8524		A-100% AR		#1262354							
BFCK CHEROKEE CNYN 4912												Progeny Performance			
BASIN CHEROKEE 5856												Avg BR		103	
BASIN INDIGO H680												Avg WR		107	
BASIN MAX 2840												Avg YR		103	
BASIN LAURA 5046												MPPA		105.8	
BASIN LAURA 0890															
	HBLD	GRID	CED	BW	WW	YW	MILK	ME	HPG	CEM	STAY	MB	YG	CW	REA
EPDs	78	50	7	-0.4	60	90	6	4	11	3	7	0.59	-0.02	23	0.09
Top%	69	23	25	46	41	43	99	65	37	71	85	13	38	45	44

- She is AI bred on 3/24/16 to Jeffries Reddington 865C. Pasture exposed 4/5 - 5/24 to Andras Smart Choice R264. Examined safe and due in January 2017.

Lots 107-109... from the famed Basin Rose tribe!

LOT		BASIN ROSE 8165													
107		3/15/2008		DES/8165		A-100% AR		#1262287							
STEVENS SALUTE											Progeny Performance				
BASIN SALUTE R060											Avg BR		102		
BASIN SAM J778											Avg WR		103		
BASIN EXT H695											Avg YR		99		
BASIN ROSE L185											MPPA		103.2		
BASIN ROSE 414F															
	HBLD	GRID	CED	BW	WW	YW	MILK	ME	HPG	CEM	STAY	MB	YG	CW	REA
EPDs	59	49	6	-0.4	40	69	23	7	10	9	5	0.52	0.02	11	-0.25
Top%	89	45	33	48	93	83	31	87	59	9	96	23	52	78	97



Lot 107, Basin Rose 8165...

- Rose 8165 produced the first NAJRAE Foundation Heifer to Emmett Caldwell in NE. She was AI bred on 3/23/16 to Jeffries Checotah 817C. Pasture exposed 4/5 - 5/24 to Andras Smart Choice R264. Examined safe and due in January 2017.



Lot 108, Basin Rose 8612...

- AI bred on 3/23/16 to Jeffries Checotah 817C. Pasture exposed 4/5 - 5/24 to Andras Smart Choice R264. Examined safe to the AI date and due 12/31/16.

LOT		BASIN ROSE 8612													
108		1/24/2008 DES/8612 A-100% AR #1236865													
BASIN PAYWEIGHT M205												Progeny Performance			
BASIN DATELINE 5955 BR												Avg BR		96	
BASIN LIL J783												Avg WR		104	
BASIN TREND SETTER 6074												Avg YR		104	
BASIN ROSE 6441												MPPA		102.9	
BASIN ROSE 4166															
	HBLD	GRID	CED	BW	WW	YW	MILK	ME	HPG	CEM	STAY	MB	YG	CW	REA
EPDs	102	49	6	-1.6	54	78	27	7	11	8	10	0.52	-0.08	14	0.1
Top%	38	31	29	28	63	67	13	91	43	11	55	21	15	70	44

LOT		BASIN ROSE 8321													
109		2/20/2008		DES/8321		A-100% AR		#1262314							
STEVENSON SALUTE											Progeny Performance				
BASIN SALUTE R060											Avg BR		95		
BASIN SAM J778											Avg WR		95		
GLACIER MARIAS 548											Avg YR		95		
BASIN ROSE 3345											MPPA		97.1		
BASIN ROSE 414F															
	HBLD	GRID	CED	BW	WW	YW	MILK	ME	HPG	CEM	STAY	MB	YG	CW	REA
EPDs	68	49	1	2.1	51	87	21	8	9	7	7	0.57	-0.02	26	-0.25
Top%															



Lot 109, Basin Rose 8321...

- AI bred on 3/24/16 to Jeffries Reddington 865C. Pasture exposed 4/5 - 5/24 to Andras Smart Choice R264. Examined safe to the AI date and due 1/01/2017.

Foundation Red Angus cows from the Basin Reds herd in MT!



Lot 110, Basin Duchess 8120...

- AI bred on 3/24/16 to Jeffries Commander 793C. Pasture exposed 4/5 - 5/24 to Andras Smart Choice R264. Examined safe to the natural service and due late January 2017.

LOT 110		BASIN DUCHESS 8120													
		2/26/2008		DES/8120		A-100% AR		#1262263							
STEVENSON SALUTE BASIN SALUTE R060 BASIN SAM J778 BASIN SENSATION 702E BASIN DUCHESS 1412 BASIN DUCHESS 208D												Progeny Performance			
												Avg BR		96	
												Avg WR		107	
												Avg YR		107	
												MPPA		105.4	
	HBLD	GRID	CED	BW	WW	YW	MILK	ME	HPG	CEM	STAY	MB	YG	CW	REA
EPDs	67	46	4	4.3	52	83	15	6	11	5	8	0.29	0.08	26	-0.21
Top%	82	94	55	98	69	58	83	83	39	38	80	73	81	34	96

LOT		BASIN CENTURIA 8609													
111		1/26/2008 DES/8609 A-100% AR #1236859													
BASIN PAYWEIGHT M205											Progeny Performance				
BASIN DATELINE 5955 BR															
BASIN LIL J783											Avg BR		102		
											Avg WR		105		
BASIN TREND SETTER 6074											Avg YR		101		
BASIN CENTURIA 6313											MPPA		104.0		
BASIN CENTURIA 3921															
	HBLD	GRID	CED	BW	WW	YW	MILK	ME	HPG	CEM	STAY	MB	YG	CW	REA
EPDs	104	48	7	-1.7	53	71	26	0	12	7	10	0.45	-0.11	9	0.2
Top%	35	55	26	26	66	80	16	33	32	22	50	34	9	82	27



Lot 111, Basin Centuria 8609...

- AI bred on 3/23/16 to Jeffries Reddington 865C. Pasture exposed 4/5 - 5/24 to Andras Smart Choice R264. Examined safe to the AI due 12/31/2016.

'15 was a good year for Lot 112's progeny...



Her Rollin Deep son, 533B, sold to Elizabeth Wright, OK, for \$7,000!

Her Justice daughter was a featured halter heifer and sold to Olivia Hoots, IL, for \$15,000.

LOT		BASIN BONNEBELL 8564													
112		2/11/2008		DES/8564		A-100% AR		#1262352							
BFCK CHEROKEE CNYN 4912												Progeny Performance			
BASIN CHEROKEE 5856												Avg BR		107	
BASIN INDIGO H680												Avg WR		106	
BASIN LOGAN 0882												Avg YR		108	
BASIN BONNEBELL 5018 BR												MPPA		103.9	
BASIN BONNEBELL 0323															
	HBLD	GRID	CED	BW	WW	YW	MILK	ME	HPG	CEM	STAY	MB	YG	CW	REA
EPDs	109	49	7	-0.6	65	93	13	7	10	3	12	0.6	0.08	24	0.07
Top%	29	33	29	44	26	37	91	87	58	71	26	13	81	41	48

- Pasture exposed 4/5 - 5/24 to Andras Smart Choice R264. Examined safe and due in early January 2017.



JEFFRIES RED ANGUS - BRED MATURE COWS



Foundation Red Angus cows from the Basin Reds herd in MT!



LOT		BASIN BONNEBELL 8410															
113		2/13/2008		DES/8410		A-100% AR		#1236785									
RED COMPASS MULBERRY 449M												Progeny Performance					
RED FINE LINE MULBERRY 26P																	
RED DUS FAYETTE 8G																	
BASIN EXT H695												Avg BR				99	
BASIN BONNEBELL 4225												Avg WR				99	
BASIN BONNEBELL 2851												Avg YR				95	
												MPPA				99.2	
	HBLD	GRID	CED	BW	WW	YW	MILK	ME	HPG	CEM	STAY	MB	YG	CW	REA		
EPDs	136	48	3	0.2	66	102	17	7	15	9	14	0.35	0.18	31	0.11		
Top%	8	51	66	59	21	20	75	89	6	8	8	61	97	22	42		

Lot 113's Oly son, 923C, sells as Lot 3!

- AI bred on 3/24/16 to Jeffries Commander 793C. Pasture exposed 4/5 - 5/24 to Andras Smart Choice R264. Examined safe to natural service due late February 2017.

LOT		BASIN PRIDE 8025													
114		3/2/2008		DES/8025		A-100% AR		#1262252							
STEVENSON SALUTE												Progeny Performance			
BASIN SALUTE R060												Avg BR		101	
BASIN SAM J778												Avg WR		92	
BASIN HOB0 215D												Avg YR		98	
BASIN PRIDE 0503												MPPA		94.4	
BASIN NONE BETTER 235E															
	HBLD	GRID	CED	BW	WW	YW	MILK	ME	HPG	CEM	STAY	MB	YG	CW	REA
EPDs	83	49	5	0	46	83	14	6	10	8	8	0.47	0.03	20	-0.14
Top%	63	29	40	56	84	58	86	83	62	14	78	30	57	53	90



Lot 114, Basin Pride 8025...

- AI bred on 3/24/16 to Jeffries Commander 793C. Pasture exposed 4/5 - 5/24 to Andras Smart Choice R264. Examined safe to the AI due 1/01/2017.



Lot 115, Basin Sam 8948...

LOT		BASIN SAM 8948													
115		3/14/2008		DES/8948		A-100% AR		#1262229							
ANDRAS ENERGIZER 2222												Progeny Performance			
BASIN ENERGIZER 20R5												Avg BR		97	
BASIN ROSE F521												Avg WR		98	
BASIN NONE BETTER F119												Avg YR		101	
BASIN SAM J430												MPPA		98.4	
CHINOOK 06D															
	HBLD	GRID	CED	BW	WW	YW	MILK	ME	HPG	CEM	STAY	MB	YG	CW	REA
EPDs	79	49	5	0.1	59	96	14	5	11	5	8	0.43	0.1	28	-0.02
Top%	68	35	47	57	44	31	87	75	42	49	78	39	85	31	68

- Basin Sam 8948 produced Jeffries Depth Charge 556B, a powerful herd bull by Rollin Deep that sold last year to Arrowsmith Red Angus, NE for \$10,000. She was AI bred on 3/23/16 to Jeffries Checotah 817C. Pasture exposed 4/5 - 5/24 to Andras Smart Choice R264. Examined safe to the natural service and due February 2017.



JEFFRIES RED ANGUS - MATURE BRED COWS



Priscilla 304S... an elite ET Donor and a rare specimen!



LOT		RED BRYLOR PRISCILLA 304S													
116		1/30/2006		LMP/304S		A-100% AR		#1504870							
SSS BLACK TREND 13B RED BRYLOR NEW TREND 22 MEADOW CK MS SEAMAN 31A RED WIL-SEL PRESIDIO 26E RED WIL-SEL PRISCILLA R. 21K RED WIL-SEL MISS REDFORD 45E										Progeny Performance					
										Avg BR			99.2		
										Avg WR					
										Avg YR					
										MPPA					
HBLD		GRID	CED	BW	WW	YW	MILK	ME	HPG	CEM	STAY	MB	YG	CW	REA
EPDs	76	45	-8	5.3	64	95	11	-7	13	-1	12	0.15	0.01	34	-0.11
Top%															

- A rare opportunity to own on of the deepest ribbed, prettiest cows in the business, Priscilla 304S! Purchased from Brylor Ranch in Canada, she has been a very prolific donor here at Jeffries.

- She is pasture exposed 4/2 to 5/24 to Jeffries Blueprint 258Z. Examined safe and due early February 2017.



Priscilla 304S, pictured as a 2yr old when we purchased her from Brylor Ranch in Canada!



Her Rollin Deep son, Even Deeper 531B, was a sale feature last year!



Registered Red Angus recipients carrying the ET progeny of Meado-West Persuasion 403P!

**Lots 117
thru 124...
all are
carrying
ET progeny
of
Meado-West
Persuasion!**



We acquired this phenomenal donor two years ago at the Solution Genetics sale. Persuasion was one of Cassie's first show heifers, but she soon became much more than that, producing several herdsires, including Wide Load at the Mann Ranch in KS, and X-Files at Solution Genetics. Of course, she produced many show winners too!

LOT 117 118	MEADO-WEST PERSUASION 403P X VGW OLY 903														
	RED SSS OLY 554T VGW OLY 903 VGW TM-DORA 0758 BFCK CHEROKEE CNYN 4912 MEADO-WEST PERSUASION DFRA AL THEA 107														
	HBLD	GRID	CED	BW	WW	YW	MILK	ME	HPG	CEM	STAY	MB	YG	CW	REA
EPDs		4	-3.7	63	106	23	4	8	0	10	0.57	-0.08	28	0.30	
Top%															

LOT 119 120	MEADO-WEST PERSUASION 403P X JEFFRIES BLUEPRINT 258Z														
	C-BAR CONTOUR 107X JEFFRIES BLUEPRINT 258Z BROWN MS BIG SKY U7877														
	BFCK CHEROKEE CNYN 4912 MEADO-WEST PERSUASION DFRA AL THEA 107														
	HBLD	GRID	CED	BW	WW	YW	MILK	ME	HPG	CEM	STAY	MB	YG	CW	REA
EPDs			7	-2.8	70	104	20	4	11	-3	11	0.84	-0.07	27	0.42
Top%															

- Lot 117: Jeffries W562, Reg #1305248. Due 12/30/16.

- Lot 118: Jeffries W577, Reg #1305213. Due 12/30/16.

- Lot 119: Jeffries W589, Reg #1305230. Due 12/30/16.

- Lot 120: TJS Sadie W995, Reg #1315902. Due 12/30/16.

Registered Red Angus recipients carrying the ET progeny of Meado-West Persuasion 403P!

LOT		MEADO-WEST PERSUASION 403P X FRITZ JUSTICE 8013													
121															
122															
123															
VGW JUSTICE 614 FRITZ JUSTICE 8013 FRITZ CHRIS 6047 BFCK CHEROKEE CNYN 4912 MEADO-WEST PERSUASION DFRA AL THEA 107															
	HBLD	GRID	CED	BW	WW	YW	MILK	ME	HPG	CEM	STAY	MB	YG	CW	REA
EPDs			8	-1.3	77	122	27	2	8	3	10	0.72	0.11	40	0.17
Top%															



Fritz Justice 8013...

- Lot 121: Jeffries Mulberry W544, Reg #1305221. Due 12/30/16.
- Lot 122: Six Mile Lakiska 707W, Reg #1399027. Due 12/30/16.
- Lot 123: Six Mile Fanny 837W, Reg #1399017. Due 12/30/16.

**Jeffries
American
Brew 553B...**

Jeffries American Brew 533B, pictured at 18 months, was the top selling bull last fall, going to Guthrie Red Angus in Woodward, OK, for \$25,000!

LOT 124	MEADO-WEST PERSUASION 403P X JEFFRIES AMERICAN BREW 533B														
VGW OLY 903 JEFFRIES AMERICAN BREW 533B JEFFRIES MS RIDGE Z69 BFCK CHEROKEE CNYN 4912 MEADO-WEST PERSUASION DFRA AL THEA 107															
HBLD	GRID	CED	BW	WW	YW	MILK	ME	HPG	CEM	STAY	MB	YG	CW	REA	
EPDs		3	-1.1	69	112	19	5	9	-2	10	0.60	-0.04	35	0.26	
Top%															

- Lot 124: Six Mile Marta 862W, Reg #1399022. Due 12/30/2016.



Registered Red Angus recipients carrying the ET progeny of Jeffries Ms Primrose X667!

Here comes the power! Ms Primrose X667 is on of the elite cows in the herd, earning a 108 MPPA with a 111 AWR and 107 AYR on her four natural sons. She is sired by Expectation and is out of a Mulberry x Sensation x Heavenly bred dam going back to the famed Basin Primrose 258 cow by Rainmaker.



Primrose X667's Stronghold son, 823C, posted an 800 AWW and he sells as Lot 46!

LOT 125, 126 127 128	JEFFRIES MS PRIMROSE X667 X JEFFRIES COMMANDER 793C														
	FRITZ JUSTICE 8013 JEFFRIES COMMANDER 793C JEFFRIES MS TWYLA X764 LSF JBOB EXPECTATION 6034S JEFFRIES MS PRIMROSE X667 BASIN PRIMROSE 8216														
	HBLD	GRID	CED	BW	WW	YW	MILK	ME	HPG	CEM	STAY	MB	YG	CW	REA
	EPDs		8	-0.6	81	131	30	1	13	10	12	0.61	0.15	47	0.27
Top%															



Primrose X667 is also the donor dam to this beautiful Sparticus daughter that is a featured halter heifer selling as Lot 82!

- Lot 125: Jeffries W588, Reg #1305244. Due 12/30/16.

- Lot 126: Six Mile Abby 841W, Reg #1399046. Due 12/30/16.

- Lot 127: Six Mile Libra 889W, Reg #1399024. Due 12/30/16. - Lot 128: Six Mile Syringa 0906W, Reg# 1399048. Due 12/30/16.

Registered Red Angus recipient carrying the ET progeny of Jeffries Ms Twyla X764!

Cutting Edge Genetics!! Jeffries Ms Twyla X764 is the dam to our new young herdsire, Jeffries Commander 793C, the Fritz Justice son that posted a 113 WR, 118 YR and 16.1 REA with only a 73 BW!

LOT 129	JEFFRIES MS TWYLA X764 X JEFFRIES CHECOTAH 817C														
FRITZ JUSTICE 8013															
JEFFRIES CHECOTAH 817C															
JEFFRIES MS LAKOTA Z11															
BECKTON EPIC U368 KM															
JEFFRIES MS TWYLA X764															
BASIN SAM 8948															
	HBLD	GRID	CED	BW	WW	YW	MILK	ME	HPG	CEM	STAY	MB	YG	CW	REA
EPDs			9	-0.9	78	125	30	-5	11	11	12	0.61	0.18	43	0.10
Top%															

- Lot 129: Red Wrights 43P Lassie 737T, Reg #1276244. Due 12/30/2016.

Registered Red Angus recipients carrying the ET progeny of Jeffries Ms Lakota Z11!

Jeffries Ms Lakota Z11 is one of the exciting young cows on the ranch. She is the dam of Jeffries Checotah 817C, the 123 WR, 122 YR Fritz Justice son that we sold in the '16 Mile High Classic sale in Denver this past January to ABS. Her dam, Basin Lakota 8331, is a model of productivity and longevity. At 8 years of age, she is an elite ET donor in our program and SHE SELLS as Lot 105!

LOT	JEFFRIES MS LAKOTA Z11														LOT	JEFFRIES MS JO Z246																							
130	X														133	X																							
131	JEFFRIES COMMANDER 793C														134	JEFFRIES REDDINGTON 865C																							
132																																							
FRITZ JUSTICE 8013																				ANDRAS NEW DIRECTION R240																			
JEFFRIES COMMANDER 793C																				JEFFRIES REDDINGTON 865C																			
JEFFRIES MS TWYLA X764																				JEFFRIES W563																			
RED FINE LINE MULBERRY 26P																				C-BAR CONTOUR 107X																			
JEFFRIES MS LAKOTA Z11																				JEFFRIES MS JO Z246																			
BASIN LAKOTA 8331																				BROWN MS BIG SKY U7877																			
	HBLD	GRID	CED	BW	WW	YW	MILK	ME	HPG	CEM	STAY	MB	YG	CW	REA		HBLD	GRID	CED	BW	WW	YW	MILK	ME	HPG	CEM	STAY	MB	YG	CW	REA								
EPDs			9	-1.7	76	121	30	-1	12	12	13	0.45	0.11	40	0.24		EPDs			6	-1.8	69	110	24	1	14	6	11	0.68	0.06	33	0.20							
Top%																	Top%																						

- Lot 135: Bieber Kanna 147U, Reg #1237258. Due 12/30/16.

- Lot 136: TJS Lakota U852, Reg #1230478. Due 12/30/16.

- Lot 137: Six Mile Empress 201T, Reg #1399045. Due 12/30/16.

- Lot 133: Red KBJ Misty 944U, Reg #1289272. Due 12/30/16.

- Lot 134: Six Mile Marta 138T, Reg #1399036. Due 12/30/16.

Registered Red Angus recipients carrying the ET progeny of Jeffries Ms Jo Z246!



Jeffries Ms Jolene Z243, is a full sister to Jo Z246 that we sold as the pick of our bred 2yr olds in the '15 Mile High Classic Sale in Denver. She was purchased by Brett Goodson, TX and C-Bar Ranch, KS for \$26,500.

Jeffries Ms Jo Z246 is the result of pregnant recipients we purchased from the C-Bar Red Angus program in KS back in '12. She is sired by Accelerated Genetics sire, C-Bar Contour 107X, and is out of a Big Sky x Major League bred dam going back to the famed Jolene cow family. Ms Jo Z246's '16 natural born calf, Jeffries Ms Jo C15, is the powerful Bieber Sparticus daughter featured in the haltered heifers as Lot 81!



Registered Red Angus recipients carrying the ET progeny of Jeffries Ms Lass B542!

Jeffries Ms Lass B542 is one of the most powerful young females in the herd. She is sired by Rollin Deep and out of Basin Lass 8544, a Trendsetter daughter that is in our ET program. Lass B542 posted an impressive yearling record of: 73 BW, 667 AWW, 108 WR, 940 AYW, 116 YR, 5.26 IMF with a 109 ratio, and 10.5 REA with a 108 ratio!

LOT	JEFFRIES MS LASS B542														
	X														
	JEFFRIES REDDINGTON 865C														
135															
136															
137															
ANDRAS NEW DIRECTION R240															
JEFFRIES REDDINGTON 865C															
JEFFRIES W563															
BIEBER ROLLIN DEEP Y118															
JEFFRIES MS LASS B542															
BASIN LASS 8544															
	HBLD	GRID	CED	BW	WW	YW	MILK	ME	HPG	CEM	STAY	MB	YG	CW	REA
EPDs			4	0.1	74	118	25	-2	13	7	9	0.58	0.19	40	0.17
Top%															



Jeffries Reddington 865C, the sire of the ET mating in Lot 135-137, is a super sound, powerful made New Direction x Mulberry bred bull that was a member of out NWSS Pen of Three and sold in the '16 Mile High Classic sale to Pieper Red Angus, NE.

- Lot 135: Bieber Kanna 147U, Reg #1237258. Due 12/30/16.
- Lot 136: TJS Lakota U852, Reg #1230478. Due 12/30/16.
- Lot 137: Six Mile Empress 201T, Reg #1399045. Due 12/30/16.



Jeffries Checotah 817C, the sire of the ET mating in Lots 141 & 142, is a Fritz Justice x Mulberry son that we sold in the '16 Mile High Classic Sale to ABS. His dam and granddam are both donors in our program.

LOT 138 139	JEFFRIES MS LASS B542 X JEFFRIES CHECOTAH 817C														
FRITZ JUSTICE 8013															
JEFFRIES CHECOTAH 817C															
JEFFRIES MS LAKOTA Z11															
BIEBER ROLLIN DEEP Y118															
JEFFRIES MS LASS B542															
BASIN LASS 8544															
	HBLD	GRID	CED	BW	WW	YW	MILK	ME	HPG	CEM	STAY	MB	YG	CW	REA
EPDs			7	0.2	83	133	25	1	12	9	11	0.52	0.24	49	0.15
Top%															

- Lot 138: Gold Bar Barbara R 115U, Reg #1276255. Due 12/30/16.
- Lot 139: Six Mile Lana 118T, Reg #1399034. Due 12/30/16.



Registered Red Angus recipients carrying the ET progeny of Jeffries Ms Abigrace B717!

We purchased C-Bar Abigrace 257Z as a top bred heifer in 2014. Her first calf, Ms Abigrace B717, was one of our top replacement heifers in '15, posting a 698 AWW and 115 WR!



**C-Bar Abigrace 257Z...
the granddam!**

<div>LOT</div> <div>140</div>		<div>JEFFRIES MS ABIGRACE B717</div> <div>X</div> <div>JEFFRIES COMMANDER 793C</div>													
FRITZ JUSTICE 8013															
JEFFRIES COMMANDER 793C															
JEFFRIES MS TWYLA X764															
C-BAR ELDORADO 114Z															
JEFFRIES MS ABIGRACE B717															
C-BAR ABIGRACE 257Z															
	HBLD	GRID	CED	BW	WW	YW	MILK	ME	HPG	CEM	STAY	MB	YG	CW	REA
EPDs			7	-0.6	79	125	22	-1	12	9	12	0.64	0.14	43	0.19
Top%															

- Lot 140: Bieber Clemensy 115U, Reg #1237149. Due 12/30/16.



Jeffries Commander 793C, the sire of the ET mating in Lot 140, is a very exciting Fritz Justice son out of our donor, Twyla X764, by Epic.



Jeffries Checotah 817C, the sire of the ET mating in Lots 141 & 142, is a Fritz Justice x Mulberry son that we sold in the '16 Mile High Classic Sale to ABS. His dam and granddam are both donors in our program.

LOT 141 142	JEFFRIES MS ABIGRACE B717 X JEFFRIES CHECOTAH 817C													
FRITZ JUSTICE 8013 JEFFRIES CHECOTAH 817C JEFFRIES MS LAKOTA Z11														
C-BAR ELDORADO 114Z JEFFRIES MS ABIGRACE B717 C-BAR ABIGRACE 257Z														
HBLD	GRD	CED	BW	WW	YW	MILK	ME	HPG	CEM	STAY	MB	YG	CW	REA
EPDs		7	-0.2	84	133	22	2	12	10	13	0.65	0.19	48	0.03
Top%														

- Lot 141: Six Mile Rosela 430U, Reg #1399057. Due 12/30/16.

- Lot 142: Six Mile Witzel 533U, Reg #1399043. Due 12/30/16.



JEFFRIES RED ANGUS - BRED MATURE COWS



Lots 143-145... might be carrying an ET calf!

LOT 143		JEFFRIES W596													
		2/21/2009		JLJ/W596		A-100% AR		#1305227							
GP CATALYST 025 LORENZEN CATALYST 6454 HEAVEN SENT 3617 4L MR HIGH MARK R12L MS 12L HIGH MARK OF 4L R84P MS ADVANCER OF 4L R164										Progeny Performance					
										Avg BR		94			
										Avg WR		96			
										Avg YR					
										MPPA		96.0			
	HBLD	GRID	CED	BW	WW	YW	MILK	ME	HPG	CEM	STAY	MB	YG	CW	REA
EPDs	117	47	8	-2	53	76	10	3	11	10	11	0.15	-0.05	12	-0.19
Top%	21	74	22	22	65	72	96	62	40	5	34	93	25	75	94



Lot 143s Oly 903 son, 505A, sold last year to Gordon Beef, Fletcher, OK, for \$8,000.

- Implanted on 3/22 with an embryo from Meado-West Persuasion x Fritz Justice 8013. Pasture exposed 4/2 to 5/24 to Jeffries Blueprint 258Z.



**Lot 144's Stronghold son, 770B...
he sells as Lot 52!**

LOT		JEFFRIES W606													
144		3/9/2009 JLJ/W606 A-100% AR #1305188													
GP CATALYST 025 LORENZEN CATALYST 6454 HEAVEN SENT 3617 PERKS ADVANCER 9088 MS ADVANCER OF 4L 106R 4L MS MAKE MY DAY R061												Progeny Performance			
												Avg BR		104	
												Avg WR		83	
												Avg YR		89	
												MPPA		86.9	
	HBLD	GRID	CED	BW	WW	YW	MILK	ME	HPG	CEM	STAY	MB	YG	CW	REA
EPDs	96	45	1	2.2	60	84	-3	3	8	6	12	0.15	0.07	23	-0.28
Top%	46	98	79	88	42	57	99	56	90	25	22	93	76	46	98

- Implanted on 3/22 with an embryo from Meado-West Persuasion x Fritz Justice 8013. Pasture exposed 4/2 to 5/24 to Jeffries Blueprint 258Z.

LOT		RED KBJ RED GIRL 899T													
145		3/15/2007 *KBJ/899T A-100% AR #1289254													
RED WILDMAN EL GRANDE 5M RED HIPS EL GRANDE 9R RED SLC ANGEL 71L RED GEIS PREMIER PLUS 72'96 RED GEIS RED GIRL 63'01 RED EAGLE ACRES RED GIRL 102											Progeny Performance				
											Avg BR		111		
											Avg WR		107		
											Avg YR		110		
											MPPA		105.8		
	HBLD	GRID	CED	BW	WW	YW	MILK	ME	HPG	CEM	STAY	MB	YG	CW	REA
EPDs	57	46	-7	5.4	75	110	19	2	2	-2	12	0.02	0.05	43	-0.11
Top%	90	97	99	99	5	10	57	53	99	96	17	98	68	4	85

- Implanted on 3/22 with an embryo from Jeffries Ms Lakot Z11 x Jeffries Commander 793C. Pasture exposed 4/5 to 5/24 to Andras Smart Choice R264

Lots 143-145 were all implanted with elite embryos from our ET program. At pregcheck, they were too close to call, so if they calve January 1st... you have an elite ET calf from Jeffries!



Foundation dams from the famed Six Mile Red Angus herd in Canada!



*Lot 146's Stronghold son, 878C...
he sells as Lot 50!*

LOT		SIX MILE DREAM GIRL 32W															
146		2/2/2009		SIXM/32W		A-100% AR		#1399060									
SSS BOOMER 803B												Progeny Performance					
RED LAZY MC SMASH 41N												Avg BR		105			
RED LAURON YB ROSA 11G												Avg WR		102			
RED SHODEREE RAMBO 72D												Avg YR		95			
RED YY DREAM 391N												MPPA		101.5			
RED SHODEREE DREAM 201E																	
	HBLD	GRID	CED	BW	WW	YW	MILK	ME	HPG	CEM	STAY	MB	YG	CW	REA		
EPDs	92	45	2	0.4	45	63	18	-11	10	0	12	0.06	-0.03	8	-0.09		
Top%	51	98	75	62	86	88	66	2	60	92	18	97	32	83	82		

- Pasture exposed 4/2 to 5/24 to Jeffries Blueprint 258Z. Examined safe and due early February 2017.

Come join us for lunch!



LOT		SIX MILE NETTIE 765W													
147		2/21/2009		SIXM/765W				A-100% AR #1399020							
RED SIX MILE AVIATOR 217P												Progeny Performance			
RED SIX MILE SAKIC 832S															
RED SIX MILE SIERA 257P															
RED SIX MILE RICOCHET 478R															
RED SIX MILE NETTIE 283T												Avg BR		105	
RED SIX MILE NETTIE 8N												Avg WR		98	
												Avg YR		95	
												MPPA		98.6	
	HBLD	GRID	CED	BW	WW	YW	MILK	ME	HPG	CEM	STAY	MB	YG	CW	REA
EPDs	84	44	5	0.5	46	58	19	-10	10	12	8	0.04	-0.01	5	-0.27
Top%	62	99	47	64	85	92	57	3	61	1	73	98	41	88	98



*Lot 148's Stronghold son, 847C...
he sells as Lot 45!*

LOT		SIX MILE BARBIE 819W																	
148		3/4/2009		SIXM/819W				A-100% AR		#1399049									
RED T-K PERCISION 21P												Progeny Performance							
RED T-K SUM-MIT 28T												Avg BR		112					
RED BWB TROPHY 4'02 OF CANYO												Avg WR		104					
ROSE HILL ROYCE 8N												Avg YR		102					
RED ROSE HILL BARBIE 3T												MPPA		103.1					
ROSE HILL MISS BARBIE 5H																			
	HBLD	GRID	CED	BW	WW	YW	MILK	ME	HPG	CEM	STAY	MB	YG	CW	REA				
EPDs	31	45	-2	3.4	49	68	15	-8	10	1	6	0.35	0.09	15	0				
Top%	99	99	96	96	79	84	85	4	67	86	93	60	83	68	63				

- Pasture exposed 4/2 to 5/24 to Jeffries Blueprint 258Z. Examined safe and due January 2017.



JEFFRIES RED ANGUS - BRED MATURE COWS



Home-grown proven females with the Jeffries prefix!

LOT		JEFFRIES W555													
149		1/20/2009 JLJ/W555 A-100% AR #1305219													
RED SIX MILE AVIATOR 217P											Progeny Performance				
RED SIX MILE SAKIC 832S															
RED SIX MILE SIERA 257P															
PERKS ADVANCER 9088															
MS ADVANCER OF 4L R28P											Avg BR		104		
4L MS RAMBO R710											Avg WR		96		
											Avg YR		96		
											MPPA		96.9		
	HBLD	GRID	CED	BW	WW	YW	MILK	ME	HPG	CEM	STAY	MB	YG	CW	REA
EPDs	66	44	-3	5.5	76	107	17	10	7	11	9	-0.01	0.15	41	-0.04
Top%	83	99	98	99	4	13	72	97	93	2	66	99	95	6	72

- Pasture exposed 4/2 to 5/24 to Jeffries Blueprint 258Z. Examined safe and due February 2017.



Lot 149's Trailboss son, 490A, sold last year for \$6,500.



Lot 150's son, 506A, was the lead Trailboss son in our sale last year!

LOT		JEFFRIES W584													
150		2/7/2009		JLJ/584W		A-100% AR		#1305234							
UBAR HIGH CAPACITY 224												Progeny Performance			
UBAR GOLD CAP 6017												Avg BR		98	
UBAR MARIGOLD 251												Avg WR		103	
LCC NO DOUBT A378L												Avg YR		104	
LSF JLJ KYLA S439												MPPA		103.6	
JEFF KYLA K15															
	HBLD	GRID	CED	BW	WW	YW	MILK	ME	HPG	CEM	STAY	MB	YG	CW	REA
EPDs	74	50	7	-2.8	55	89	20	1	12	4	6	0.6	0.17	19	-0.02
Top%	75	14	25	13	60	45	52	43	24	54	94	13	97	57	68

- Pasture exposed 4/2 to 5/24 to Jeffries Blueprint 258Z. Examined safe and due January 2017.

LOT		JEFFRIES W585													
151		2/9/2009 JLJ/W585 A-100% AR #1305198													
COLEY'S MOJITO 503R COLEY'S 503R TRAILBOSS 7170 MKM PRINCESS 3F											Progeny Performance				
											Avg BR		99		
											Avg WR		100		
CIRCLE A MY DAY 0512											Avg YR		102		
JRSF RACHEL 702N											MPPA		100.0		
LSF RACHEL R239 K1444															
	HBLD	GRID	CED	BW	WW	YW	MILK	ME	HPG	CEM	STAY	MB	YG	CW	REA
EPDs	84	48	5	-1.1	55	83	16	-4	11	3	9	0.37	0.08	18	-0.3
Top%	62	56	44	35	59	58	81	13	42	68	68	54	79	60	99

- Pasture exposed 4/2 to 5/24 to Jeffries Blueprint 258Z. Examined safe and due January 2017.



A typical afternoon at Jeffries Red Angus!

Registered Red Angus cows that have stood the test of time!



Jeffries Blueprint 258Z...

the service sire of Lots 152 & 153, he sold in our '14 sale to Accelerated Genetics, WI,

LOT	TJS LASS W9032														
153	4/20/2009 TJS/W9032 A-100% AR #1315764														
BASIN HOB0 3003 PIE ROBO 7004 PIE RUBY 5020 BUF-MRM VAGABOND 9506 BUF CRK LASS 4649 BUF CRK LASS 3965										Progeny Performance					
										Avg BR	94				
										Avg WR	104				
										Avg YR	95				
										MPPA	102.9				
	HBLD	GRID	CED	BW	WW	YW	MILK	ME	HPG	CEM	STAY	MB	YG	CW	REA
EPDs	83	47	5	0.5	54	74	32	4	11	4	9	0.31	-0.02	14	-0.05
Top%															

- Pasture exposed 4/2 to 5/24 to Jeffries Blueprint 258Z. Examined safe and due March 2017.



LOT	TR KARINA RANGER W904														
152	1/6/2009 TR/W904 A-100% AR #1304318														
PIE ATLANTIC 2204 TPIE RANGER 6029 RCRA MORNIN HORIZN 1065 LCC MR. MARBLING 1309K JEFFRIES KARINA K79-R338 JEFFRIES KARINA K79										Progeny Performance					
										Avg BR	100				
										Avg WR	95				
										Avg YR	103				
										MPPA	96.2				
	HBLD	GRID	CED	BW	WW	YW	MILK	ME	HPG	CEM	STAY	MB	YG	CW	REA
EPDs	74	47	1	0.6	45	69	13	5	13	5	9	0.35	0.01	12	0.03
Top%	74	82	85	66	86	82	91	75	21	47	66	60	50	75	57

- Pasture exposed 4/2 to 5/24 to Jeffries Blueprint 258Z. Examined safe and due January 2017.



LOT	BIEBER MINOLA 206U														
154	3/30/2008 RAB/206U A-100% AR #1237312														
BIEBER BOONE 6927 BIEBER BOONE 8000 BIEBER QUE 6007 OLC DAYMAKER J293 OLC MINOLA N443 OLC MINOLA L489										Progeny Performance					
										Avg BR	99				
										Avg WR	102				
										Avg YR	97				
										MPPA	101.5				
	HBLD	GRID	CED	BW	WW	YW	MILK	ME	HPG	CEM	STAY	MB	YG	CW	REA
EPDs	41	49	2	-0.2	71	104	21	11	9	3	5	0.44	0.11	31	-0.14
Top%	97	37	73	52	11	17	43	98	80	73	97	38	89	21	89

- Pasture exposed 4/5 to 5/24 to Andras Smart Choice R264. Examined safe and due February 2017.

Registered Red Angus cows that have stood the test of time!

LOT 155	RED GOLD-BAR LACIER 1181U														
	1/18/2008 *GBL/1181U A-100% AR #1276263														
LCC MAJOR LEAGUE A502M RED GOLD-BAR RIP ET ML 116R RED HOWE MS KURUBA DDH 25E RED GOLD-BAR HUNK 803B 104H RED GOLD-BAR LACIE H 206P RED SIX MILE LACIE 761L											Progeny Performance				
											Avg BR		97		
											Avg WR		99		
											Avg YR		97		
											MPPA		99.2		
	HBLD	GRID	CED	BW	WW	YW	MILK	ME	HPG	CEM	STAY	MB	YG	CW	REA
EPDs	106	46	5	-1.5	45	55	20	-15	9	2	13	0.2	-0.05	0	-0.16
Top%	32	97	47	28	87	94	54	1	73	82	13	89	25	93	92

- Pasture exposed 4/5 to 5/24 to Andras Smart Choice R264. Examined safe and due February 2017.

LOT		RED GOLD-BAR AUDRY RG 2121U													
156		2/21/2008 *GBL/2121U 2-100% AR #1276256													
RED GOLD-BAR LOTTO J 120L RED GOLD-BAR RINGER LOT 205R RED SOO LINE MS ANNE 72M RED GOLD-BAR KING V415 107K RED R & M 107K AUDRY 21N RED R & M 131G AUDRY G 125K												Progeny Performance			
												Avg BR		95	
												Avg WR		90	
												Avg YR		95	
												MPPA		91.8	
	HBLD	GRID	CED	BW	WW	YW	MILK	ME	HPG	CEM	STAY	MB	YG	CW	REA
EPDs	88	44	4	0	46	59	9	-6	6	2	12	-0.14	0.02	5	-0.12
Top%	57	99	52	55	85	91	97	7	97	80	19	99	54	88	87

- Pasture exposed 4/5 to 5/24 to Andras Smart Choice R264. Examined safe and due January 2017.

LOT		SIX MILE BAYBERRY 150T														
157		2/14/2007 SIXM/150T A-100% AR #1399038														
RED HEARTLAND KNIGHT CHARM 1 RD TER-RON FULLY LOADED 540R RED TER-RON GOLDIE 240L RED TOWAW INDEED 104H RED SIX MILE BAYBERRY 498P RED SIX MILE BARBERRY 316J												Progeny Performance				
												Avg BR			97	
												Avg WR			94	
												Avg YR				
												MPPA			95.0	
	HBLD	GRID	CED	BW	WW	YW	MILK	ME	HPG	CEM	STAY	MB	YG	CW	REA	
EPDs	84	46	-3	-0.3	42	59	10	-6	10	3	12	0.27	-0.02	5	-0.08	
Top%	63	93	97	49	91	92	96	7	62	70	26	78	36	88	80	

- Pasture exposed 4/5 to 5/24 to Andras Smart Choice R264. Examined safe and due late February 2017.

LOT		TJS REBELLO T787													
158		3/18/2007		TJS/T787		A-100% AR		#1168230							
JHE CANYON HAWK 1062												Progeny Performance			
HXC BIG DAWG 5515R												Avg BR		99	
HXC JOLENE 301N												Avg WR		103	
SRR CHARGER 102												Avg YR		102	
TJS REBELLO P429												MPPA		100.8	
BLUE SPRUCE REBELLO 51F															
	HBLD	GRID	CED	BW	WW	YW	MILK	ME	HPG	CEM	STAY	MB	YG	CW	REA
EPDs	77	47	4	0.8	64	103	20	12	12	4	8	-0.19	-0.08	33	0.15
Top%															

- Pasture exposed 4/5 to 5/24 to Andras Smart Choice R264. Examined safe and due February 2017.



LOT 101

Gordon Beef, Fletcher, OK

**9 Hd of Commerical Red Angus 2yr olds(Red & Red Baldy)
with VGW Oly 903 calves at side!**

- Powerful Red and red baldy first calf heifers that were AI'd to VGW Oly 903.
- They have all calved in September and sell with babies at side!
- The littermates to these heifers sold earlier this summer for \$2,750 per head before calving!

For information on these heifers contact...

Chad Gordon - (580) 678-1918
chadgordon8g@gmail.com



VGW Oly 903

*Proven Calving Ease Sire
Extremely Structurally Sound
Progeny excel in the Feedlot
and are desirable by the
Commercial Cowman!*



LOT 102 A & B

Cowling Land & Cattle Co, Yukon, OK

Commerical 2yr Old Pairs & Bred Heifers!

- Lot 102A - 25 Head of 2yr old commercial Red Angus pairs with July calves at side. Cows have been exposed back to Red Angus bulls.
- Lot 102B - 8 Head of commercial Red Agnus heifers due to calve in December and January.

For information on these heifers contact...
Bob Cowley 405-620-7362.



LOT 103 A & B

Alfadale Stock Farms, El Reno, OK

15 Head of spring bred commercial Red Angus heifers!

- Lot 103A - 10 Hd of commercial Red Angus heifers AI bred to calve 2/16/17 to VGW Oly 903.
- Lot 103B - 5 Hd of commercial Red Angus heifers naturally bred to a son of VGW Oly 903 and due to calve 3/9/17.

For information on these heifers contact...
Peter Jeffrey (405) 202-7694.



Hours:
Mon-Fri 8:00-5:00
Sat 8:00-Noon

GOLDEN
AG INC.

918.473.0335

416917 Hwy. 266
Checotah, OK 74426

At **GOLDEN AG INC.** We possess a broad range of knowledge gained through years in the industry and a passion for helping you succeed. Call or visit us today!
We are located 3 miles west of Checotah on Highway 266

Vermeer®



We are a Full-Service parts provider for Vermeer & have an on-site Vermeer certified technician



We provide services ranging from new and used Vermeer equipment sales to parts, service and support.



Werk Weld troughs are available in many sizes & types



Call for more information & prices for Pearson cattle chutes



WW corrals are durable & easy-to-set-up



They can be set up in several different configurations



PARTS
FOR MANY BRANDS
OF FARM EQUIPMENT

Hydraulic hoses and fittings for many applications.
Custom built to meet your needs.
Give us a call for more information & prices



WWW.GOLDENAGINC.COM

SALE TERMS AND CONDITIONS

Except for those stated in the terms and conditions below, there are no warranties, either expressed or implied, as to the merchantability or fitness for a particular purpose with respect to the cattle being sold at this auction. The warranties and guarantees set forth in the "Terms and Conditions" are in lieu of all other warranties, either expressed or implied, and the remedies provided therein shall be the sole and exclusive remedy for the Buyer, or any party claiming through Buyer, for any breach of warranty or guarantee therein provided, and all other obligations or liabilities.

All cattle in this sale are offered according to the laws of the State wherein the sale is conducted. The right to bid, as provided under law, is reserved for all sellers unless otherwise announced.

1. BIDDING

The Auctioneer in charge will settle any disputes as to bids, and his decision on such matters shall be final.

2. TERMS

Terms of sale are cash unless satisfactory credit arrangements have been made with Sale Management prior to sale.

3. PURCHASER'S RISK

Each animal becomes the risk of the Buyer as soon as sold, but it shall be the obligation of the Seller to see that animals are fed and cared for free of charge to Buyer, until loaded for shipment or until the expiration of 48 hours after the sale, whichever occurs sooner.

4. CERTIFICATE OF REGISTRY

A transferred certificate of registry will be furnished to the Buyer for each animal.

5. HEALTH

All animals are eligible for interstate shipment, except as otherwise announced. Interstate health papers will be furnished for each animal requiring tuberculosis and brucellosis tests in accordance with Federal Regulations.

6. ANNOUNCEMENTS

Any changes from information of any kind in the sale catalog or related materials will be announced from the auction block and such announcements shall take precedence.

7. BREEDING GUARANTEE

The nature and extent of the Breeding Guarantee is set forth in section 10 of the Red Angus Association of America's Sale Terms and Conditions.

8. DEFAULT

In the event the Buyer defaults on payment, the Buyer shall be responsible for all costs, including attorney's costs, incurred by Sale Management or Seller in connection with collecting, or attempting to collect, payment due.

9. SELLER'S SEMEN RIGHTS

The Seller reserves the right to 1/3 semen interest in every bull sold, unless specified differently in the sale catalog. Any semen collected for the Seller will be at their cost and the Buyer's convenience.

10. LIABILITIES

All persons who attend the sale do so at his or her own risk. The Seller, and the Sale Manager assume no liability of accidents that may occur. It is to be clearly understood that the Sale Manager and their representatives act only as a medium between the Buyer and Seller.

11. CONTRACT

The above terms and conditions shall constitute as a contract between the Buyer and Seller for each sale animal and shall be equally binding upon both. Each sale and/or resale of a sale animal constitutes a separate transaction.

Thank You... Please Join Us Again!

JERRY & TRICIA JEFFRIES
419526 E 1070 Road
Checotah, Oklahoma 74426

DATED MATERIAL

...our Genetics can help move your Program too!



WWW.JEFFRIESCATTLE.COM