



EFFRIES RED ANGUS

ANNUAL BULL & FEMALE SALE

FRIDAY, SEPTEMBER 29TH 12:30PM CHECOTAH, OKLAHOMA



***Our
Program
is on the
move...***

Legacy...

*a knowledge of the industry handed down from generations of
experience in the Seedstock business!*

Dear Red Angus Enthusiasts & Cattlemen,

Legacy Genetics is proud to be associated with Jerry Jeffries and his family here at Jeffries Red Angus. He is one of the most progressive breeders in the country and is committed to raising Red Angus genetics that work in the hot and humid Southeast portion of this country.

The Jeffries program has been on the move... moving towards better, sounder, more predictable genetics to provide to the commercial cowman. With extensive embryo transplant work, they have taken their best genetics and are mass producing them to provide a superior genetic product to their customers.

As a member of Legacy Genetics, they are involved with a very select group of Red Angus breeders around the country that all have similar goals in mind... providing the genetics and services for their customers that will increase the productivity and profitability of their operations.

This offering features a set of functional, sound, rugged age-advantaged bulls that are ready to go to work! Jeffries is also offering a beautiful set of bred heifers right from the heart of his replacements!

Be sure and take advantage of Jeffries' new bull guarantee, where they are willing to pay for one half of the first year's insurance policy on any bull in the offering. This policy will cover 100% Mortality as well as 100% for Fertility.

If you have any questions about the offering or Legacy Genetics please feel free to contact me, via my email (sal1968@msn.com) or by phone (406) 591-5651.

Sincerely,

Seth Leachman

Josh Dykes

(509) 366-1968

joshdykes@legacydirect.com

Seth Leachman

(406) 591-5651

sal1968@msn.com

**LEGACY
GENETICS**



JEFFRIES RED ANGUS



ANNUAL BULL & FEMALE SALE

FRIDAY, SEPTEMBER 29TH, 2017 12:30 PM CHECOTAH, OKLAHOMA

Schedule of Events:

Thursday, September 28th –

Pre-sale viewing of cattle all day. Refreshments and snacks available.

6:00pm - Prime rib steak dinner served at the sale barn, followed by comments from RAAA Director of Business Development, Harold Bertz!

Friday, September 29th –

11:30 pm – Lunch is served!

12:30 pm – Jeffries Annual Bull & Female Sale

Please join us after the sale for a ribeye steak diner at the sale barn!

Auctioneer:

Colonel James M. Birdwell
Fletcher, Oklahoma
(580) 549-6636

Special Sale Representatives:

Chisholm Kinder – Oklahoma Cowman
(405) 235-4391

Doug Paul – The Stock Exchange
(405) 820-3982

Phil Stoll - The Weekly Livestock Reporter
(817) 366-7332

Delvin Heldermon - Special Agent
(405) 205-1116

Bill Schermer - Midwest Beef Producer
(641) 425-2541

Breed Representatives:

Harold Bertz – RAAA Director of Business Development
(816) 661-2289 harold@redangus.org

Ranch Manager:

Kirk Breed - (405) 830-5279

Herdsmen:

J C Andras - (580) 399-9730

Sale Day Phones:

Sale Barn Office – (918) 473-0335

Jerry Jeffries – (918) 638-3317

Tricia Jeffries - (918) 638-3042

Kirk Breed – (405) 830-5279

Seth Leachman – (406) 591-5651

J C Andras - (580) 399-9730

Deb Andras - (580) 371-1110

Lodging:

Stay Inn Eufaula – Checotah, OK

(918) 689-3999 Hwy 150 & Hwy 69

Best Western Eufaula Inn - Eufaula, OK

(918) 689-5553

Americas Best Value Inn – Checotah, OK

(918) 473-2381 Hwy 266 & Hwy 69

Delivery/Trucking:

Free delivery for purchases over 5 head. All other deliveries at \$150/head or less. All commercial heifers delivered at buyer's expense.

Livestock Insurance:

Jeffries is offering to pay for 1/2 of the first year insurance policy on every bull. See pg 7 for more details.

Sale Managed by

Seth Leachman

LEGACY GENETICS

Bid online at:

DVAuction
Broadcasting Real-Time Auctions

CONTACTO EN MEXICO

(406) 591-5651 sal1968@msn.com

BILLY ESTRADA CEL: 618-815-1495

NEXTEL: 72*14*44493

WWW.JEFFRIESCATTLE.COM

JERRY & TRICIA JEFFRIES
CHECOTAH OKLAHOMA 74426

918-638-3317

EFFRIES RED ANGUS- ARTICLE FROM AMERICAN CATTLEMEN

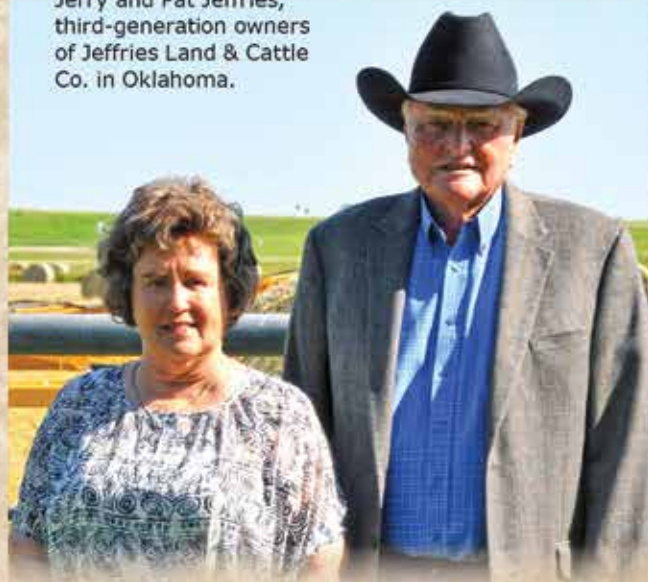
This article was featured in the 2015 Cattle Auction Guide of the American Cattlemen magazine.

When it comes to breeding and raising cattle, it all comes down to one key: choice of breed and quality. One of the premiere cattle breeds in the world is the Red Angus. One of the most respected breeders in the industry is Jerry L. Jeffries, who along with his wife Patricia, owns Jeffries Land & Cattle Co., (www.jeffriescattle.com) located near Checotah, Oklahoma. With a breeding program based on Red Angus quality and the needs of the industry, Jeffries Land & Cattle Co., has built a clientele of satisfied customers, large and small, commercial or registered cattlemen.

Jeffries takes great pride in the heritage of the land on which Jeffries Land & Cattle is located. "I grew up right here where I live today." Originally purchased by his grandfather, Jeffries has grown and expanded the original property and says members of the fifth and sixth generation also live on the ranch. Even though he could take the time to slow down, Jeffries has no intentions of retiring and currently raises 370 head of Red Angus on the ranch. "I'm just having too much fun. I like to meet and work with people."

In discussing his Red Angus cattle, Jeffries believes it is important to always be looking to improve the genetics of his cattle. "As genetics evolve and types may change, we will continue to place our emphasis on the beef-industry traits that have carried us to our success — fertility, soundness, conformation, muscle, and style. We believe in the Red Angus breed and its place in the global beef industry, and work hard to make sure our cattle meet the criteria and characteristics that help feed the world. We

Jerry and Pat Jeffries, third-generation owners of Jeffries Land & Cattle Co. in Oklahoma.



have a strict culling process to maintain the high standard of cows that produce the type of bull that we are proud to sell. This is required to satisfy the needs of every step in the production chain."

Jeffries continues, "We're always looking for the freshest genetics out there." Jeffries is a member of the newly formed Legacy Genetics, a group working together to improve genetics with the goal of making Red Angus one of the most valued breeds on the market.

KEEPING ON THE CUTTING EDGE

One of the keys to the success of Jeffries Land & Cattle Co., has been the ability to make changes as the market changes. "We put a high emphasis on phenotype and structural soundness in the Jeffries Land & Cattle Co. breeding programs. As the focus of the industry has shifted to added value from carcass genetics, the Jeffries Land & Cattle Co. herd sires have set the standard for the industry with young sires set to push the bar even higher. Through the years, our sales have been private treaty sales negotiated at the ranch and in the last five years our annual Bull and Female Sale."

According to Jeffries, several employees have been instrumental in the growth and overall success of Jeffries Land & Cattle Co. Kirk Breed has been Operations Manager for over 25 years, J. C. Andras has been herdsman for over four years and for the past six years Jeff Taylor has been overseer of all of the part time help and FFA members that come to work at the ranch. "Without these guys, our operation wouldn't be where it is today. They are hard workers and take pride in what we do here."



This article was featured in the 2015 Cattle Auction Guide of the American Cattlemen magazine.



THE ANNUAL AUCTION

Jeffries Land & Cattle Co., is the source for Red Angus seedstock and commercial genetics in the Southeast. Highlight of the year comes the last Friday in September, when Jeffries Land & Cattle Co., holds its annual Bull and Female Sale. This year's sale takes place on Friday, September 25, 2015 with 100 of the finest Red Angus bulls and 50 of the finest Red Angus females to be auctioned off. At the same time, 10-12 Red Angus show heifers will be sold. "Kids that have bought one of our heifers have done very well. We like to say, 'we grow 'em; you show 'em!'"



"This will be our fifth annual Bull and Female Sale." According to Jeffries, the sale continues to grow each year. "We sell bulls all over the United States and Mexico, and our females have been purchased by producers across the country and in Canada. We start off on Thursday evening with several ag-related speakers and a prime rib dinner. Then on Friday, we grill up burgers and all the fixings for lunch with the auction starting promptly at 12:30 p.m."

In addition to the annual sale, Jeffries also offers private sales for producers who want to come to the ranch and pick out their bulls or heifers. "We have cattle that are not quite ready for the September sale, so when they are ready, we then sell them privately."

Jeffries is quick to point out the pride that he has for the region of Oklahoma where he resides, and believes in giving back. "We support the local FFA chapters any way that we can. They can arrange visits to the ranch and use our cattle to work with their judging teams. We also do the same for the local colleges. We have also hosted the Oklahoma Cattleman's Association." For Jeffries, it is truly about giving back! ♦

LIVING A GOLDEN LIFE

In addition to their passion for ranching and Red Angus cattle, Jeffries and his wife also have other interests. "My wife has owned the Checotah Flower and Gift Shop nearby Checotah for nearly 25 years." Jerry, meanwhile, has over 40 years of experience in surveying, mapping, inspection of pipelines, right-of-way and construction management throughout the United States.

Jeffries founded Jeffries & Associates, Inc. in 1976 headquartered in Tulsa, Oklahoma with nationwide operations to the pipeline, gas transmissions, and telecommunications fields. He later sold Jeffries & Associates in 1984 and continued employment as President until leaving in 1994.

Jeffries founded Golden Field Services, Inc. (jjeffries@golden-fieldservices.com) in 1997 endeavoring to organize and furnish to the pipeline, power, and telecommunications industries coordinated survey, mapping, inspection, rights-of-way, and construction management services. Jeffries has worked with and identified the most qualified resources in terms of capabilities, experience, safety, quality standards, specifications and permit compliance.

Once again, it's about the people. "I like meeting and working with people." Jeffries will do all of the preliminary work to get bids accepted and then turn the next steps over to his project managers. According to Jeffries, success is based on the quality people working at Golden Field Services. "I have people who have been working with me since the 1970s!

Yes, owning a ranch, selectively breeding Red Angus cattle and running Golden Field Services take a lot of time, and although he could retire, Jeffries is quick to say, "I'm having too much fun to quit!"

Jeffries family members from all generations help to run the ranch.



In Loving Memory...



Lisa Reeves McCartney
October 2, 1968 - August 15, 2017

Lisa Reeves McCartney, devoted and loving mother, wife, daughter and friend passed away at the age of 48 on Tuesday, August 15, 2017 in Dallas, Texas after a short, hard-fought battle. She was born October 2, 1968 in Ft. Walton Beach, Florida.

She is survived by her sons Zach McCartney and Braden Beeson, along with her husband, Jeremy Beeson. She leaves behind her parents Jerry and Patricia Jeffries and Richard and Becky Reeves, along with her two sisters, Denice Shipley and Kimberly Wilmoth, in addition to several nieces, nephews, extended family and friends. Lisa was loved dearly by her family and wonderful friends.

Lisa owned and operated Southpark Florist in Bixby, Oklahoma for 18 years before selling the shop and moving with her family to Allen, Texas. Lisa was a remarkable person that positively touched many lives. Her amazing laugh and remarkable ability to place positive energy into any situation will be missed. When Lisa entered the room, everyone just felt a sense of happiness – she truly brightened the world.

JEFFRIES RED ANGUS - THE CREW

The people behind the scenes that make the difference!



Kirk Breed... Ranch Manager



JC Andras... Herdsman



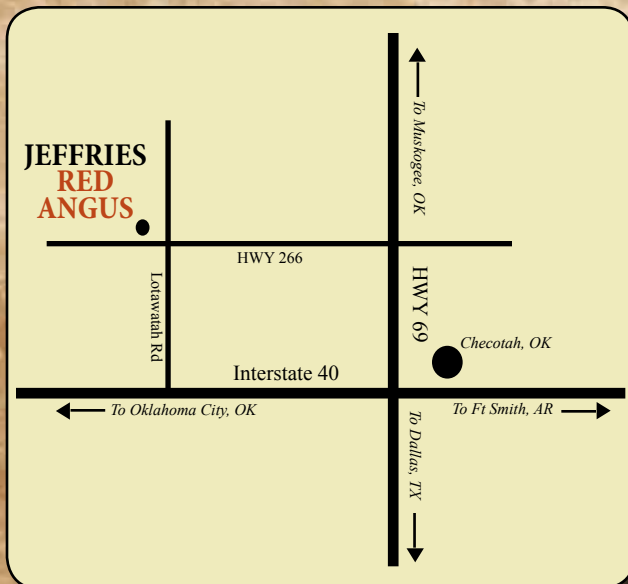
Mike Breed



Zach McCartney



Deb Andras



*Look for
the
Orange
Boot!*



Directions to our new sale facility...

From Muskogee, take 69S to Hwy 266 exit, go 3.3 miles west on Hwy 266.

From Eufala, take 69N to Hwy 266 exit, go 3.3 miles west on Hwy 266.

From Oklahoma City, take 40E to Exit 262, go 2 miles north on Lotawatah Rd.

From Ft Smith, take 40W to Exit 262, go 2 miles north on Lotawatah Rd.

EFFRIES RED ANGUS - NEW INSURANCE POLICY!

New simple way to insure your bulls...
You pick an option at time of settlement and Jeffries Red Angus will pay for 1/2 of the first year policy. If you choose to decline the insurance then you will assume all risk on your purchases.

Dakota AG INSURANCE

FARM / RANCH • MORTALITY & INFERTILITY • LIVESTOCK • EQUINE • TRUCKING

WHERE OVER 20 YEARS OF LIVESTOCK & RANCHING EXPERIENCE GOES TO WORK FOR YOU!

Coverage: The coverage provides traditional, full mortality for death from natural causes or humane destruction as a result of a life-threatening injury. The endorsement for Accident, Sickness & Disease Infertility provides coverage in the event of permanent impotency, infertility or the bulls inability to naturally service cows as a result of an accident, sickness or disease sustained during the policy.

OPTION 1

Bull Mortality and Infertility Coverage

Values: Not to exceed purchase price

Term: Renewable 6 month or 1 year policy term for bulls 6 months to 7 years of age

Premium: 10% of the purchase price

Minimum: \$200 minimum per animal

Testing: All bulls must be tested, certified & listed in the official herd sale catalog.

Mortality Payout: 100% of the value of the bull in the event of death or humane destruction as a result of a life-threatening injury.

Accident, Sickness & Disease Infertility: (Winter Freeze & Frostbite Covered)

80% of the value of the bull, less salvage value, in the event of permanent impotency, infertility or being incapable of serving females as a result of an accident, illness or disease sustained during policy period.

- Testing- The animal must pass a BSE and Health exam
- Volume rates may apply, please call for details.
- Special Rates apply for Stud Bulls that don't breed live cattle

OPTION 2

Bull Mortality and Infertility Coverage

Values: Not to exceed purchase price

Term: Renewable 6 month or 1 year policy term for bulls 6 months to 7 years of age

Premium: 12% of the purchase price

Minimum: \$200 minimum per animal

Testing: All bulls must be tested, certified & listed in the official herd sale catalog.

Mortality Payout: 100% of the value of the bull in the event of death or humane destruction as a result of a life-threatening injury.

Accident, Sickness & Disease Infertility: (Winter Freeze & Frostbite Covered)

100% of the value of the bull, less salvage value, in the event of permanent impotency, infertility or being incapable of serving females as a result of an accident, illness or disease sustained during policy period.

- Testing- The animal must pass a BSE and Health exam
- Volume rates may apply, please call for details.
- Special Rates apply for Stud Bulls that don't breed live cattle

OPTION 3

Mortality Only Coverage: Rate - 5.5% of purchase price - Mortality Payout: 100% of the value of the bull in the event of death or humane destruction as a result of a life-threatening injury.

• Veterinarian examination required on cattle \$50,000 +, 7 years of age and older and show steers valued at \$25,000 + unless bound the date of the auction.

Semen Suitability Endorsement: Rate - 3% additional to options 1, 2 or 3. A new and exciting endorsement people have been talking about! This policy will pay in the event the bull becomes totally and permanently unable to produce semen that will freeze in liquid nitrogen. Once a bull freezes a straw of semen in liquid nitrogen, we can then insure the bull in case he quits freezing within the policy period to better eliminate the risk to you the insured.



Jared Mohnen
Owner/Agent

Other Insurance options available: Farm & Ranch, Cattle Herd, Feedlot, Trucking, Prospective Offspring Coverage (Pregnancy), Frozen Semen & Embryo Insurance, Single Trip Transit Coverage, Cargo Coverage & More!

Thank You, Your Business Is Truly Appreciated!
Hope to see you sale day!



Cell: 605-682-1368 - Office: 605-990-5355 - jm@dakotaaginsurance.com - 721 W. Havens - Mitchell, SD 57301

This sale will be broadcast live on the internet.

DVAuction

Broadcasting Real-Time Auctions

Real time bidding & proxy bidding available.

*For information on the offering contact
Chad Gordon, our DVAuction representative
(580) 678-1918*



Watch & Bid online for FREE!

Can't make the sale?

Let DVAuction bring the sale to you!

Busy during the sale?

Let DVAuction represent your bid!

Visit www.dvauction.com and Register!

It's as easy as 1, 2, 3...

1. Create an account at www.dvauction.com under the "create new account" tab
2. Apply for bidding by clicking "apply for bidding" in the upper left corner of your screen, at least 24 hours prior to the auction
3. Tune into the sale and make your purchases!

For General Questions Please Contact Our Office:
(402) 316-5460 or support@dvauction.com

**High Speed Internet Access Required*



ANDRAS NEW DIRECTION R240

09/25/11 1A 100.0% WSA/R240 #1506922

MYTTY IN FOCUS

ANDRAS IN FOCUS B152

ANDRAS PINETA B91

MORGANS DIRECTION 111 9901

ANDRAS KURUBA B111

ANDRAS KURUBA B71

RAAA EPDs

HB	GM	CED	BW	WW	YW	MILK	ME	HPG	CEM	STAY	MB	REA
70	51	5	-2.9	60	104	29	-7	11	8	4	0.54	0.03

One of the breed's premier AI sires, New Direction offers a complete outcross pedigree for most. His calves are big ribbed, dark red and loaded with performance and eye appeal. He has sired some of our best performing and high selling offspring the past two years, and once again has an exciting set of sons selling.



VGW OLY 903

01/27/09 1A 100.0% VGW/903 #1322060

RED CROWFOOT OLE'S OSCAR

RED SSS OLY 554T

RED SSS GOLD EDGE 77R

VGW TRADEMARK 4101

VGW TM-DORA 0758

VGW PT- DORY 0361

**\$25
per
unit**

RAAA EPDs

HB	GM	CED	BW	WW	YW	MILK	ME	HPG	CEM	STAY	MB	REA
103	54	2	-6.4	52	108	26	4	8	10	9	0.30	0.28

Oly 903 is one of the breed's premier EPD spread bulls and a favorite among many of our customers. His daughters are now some of our best mature cows, with beautiful udders and loads of longevity. Co-owned with Bieber Red Angus, Leola, SD. SEMEN AVAILABLE!



BIEBER SPARTACUS A193

03/05/13 1A 100.0% RAB/A193 #1617230

LCC CHEYENNE B221L

BIEBER ROUSE SAMURAI X22

GHR MARITA R31

LCOC HIGH NOON A093R

BIEBER TILLY 233U

BIEBER TILLY 7334

RAAA EPDs

HB	GM	CED	BW	WW	YW	MILK	ME	HPG	CEM	STAY	MB	REA
131	53	8	-4.7	73	107	20	11	14	3	11	1.04	0.25

Spartacus is one of the breed's elite curve bending sires that also offers breed leading carcass traits. His progeny perform and are well accepted by the commercial cowman, and they also have great dispositions. Co-owned with Bieber Red Angus, Leola, SD and Accelerated Genetics, WI.



TROTTERS STRONGHOLD 156
 10/25/11 1A 100.0% LJT/156 #1496650
 GMRA CITADEL 6109
LJT CITADEL 812
 RCJS JERRI
 TROTTERS ADVANCE 140
LJT PEARL 579
 TROTTER PEARL 312

RAAA EPDs

HB	GM	CED	BW	WW	YW	MILK	ME	HPG	CEM	STAY	MB	REA
105	51	0	5.9	90	140	12	3	5	8	12	0.83	0.34

Stronghold is one of the breed's premier power sires. A top AI sire with Genex, he is off the charts for growth and sports great carcass traits. His progeny excel for sound structure and breed leading type. The last two years he has sired some of our most sought after bulls and females.

BIEBER ROLLIN DEEP Y118
 02/10/11 1A 100.0% RAB/Y118 #1436844
 BIEBER ROUGH RIDER 10712
BIEBER ROOSEVELT W384
 BIEBER SHEBA 9602
 BIEBER BOONE 8000
BIEBER TILLY 399W
 BIEBER TILLY 303S

RAAA EPDs

HB	GM	CED	BW	WW	YW	MILK	ME	HPG	CEM	STAY	MB	REA
89	51	4	0.0	75	121	28	-1	16	0	8	0.52	0.31



Rollin Deep is one of the breed's premier sires for growth and carcass traits. His semen has been very hard to obtain since he quit producing a year ago.



TJS COWBOY WAY Y423
 05/26/11 1A 100.0% TJS/Y423 #1466391
 RED LAZY MC STOUT 30S
RED LAZY MC COWBOY CUT 26U
 RED LAZY MC STAR 185M
 LORENZEN JULIAN 3811
TJS PRIDE T785
 TJS PRIDE P419

RAAA EPDs

HB	GM	CED	BW	WW	YW	MILK	ME	HPG	CEM	STAY	MB	REA
109	49	6	-2.4	55	85	18	-7	9	7	11	0.11	0.57

**\$25
per
unit**

Cowboy Way was our pick of the Shick's '13 bull sale, and his progeny have earned him a very solid calving ease proof with loads of muscle. Co-owned with TJS Red Angus, Lodge Grass, Montana. SEMEN AVAILABLE.



ANDRAS THUNDER A092

11/05/13 1A 100.0% A092/WSA #1671538

ANDRAS THUNDER B106

ANDRAS THUNDER R196

ANDRAS PINETA B73

BFECK CHEROKEE CNYN 4912

MLK CRK LAKINA 502

MLK CRK LAKINA 156

**\$25
per
unit**

RAAA EPDs

HB	GM	CED	BW	WW	YW	MILK	ME	HPG	CEM	STAY	MB	REA
82	53	3	-0.5	80	125	26	-2	13	-3	8	0.81	0.61

Thunder is the exciting top selling outcross bull from Andras' 2015 spring bull sale. His first progeny have earned him top percentiles for growth and carcass. Co-owned with Andras Stock Farm, IL, and 9 Mile Ranch, WA. SEMEN AVAILABLE.

ANDRAS OUTER LIMIT A032

03/12/13 1A 100.0% WSA/A032 #1648338

HLH OUTER LIMIT 851 4073

WHITE OAKS COPPER 873

WOF MISS COPPERTOP 674

MCPHEE PACIFIC PRIDE 4127

ANDRAS ROSE 9027

ANDRAS RAMBLIN ROSE 7007

**\$25
per
unit**

RAAA EPDs

HB	GM	CED	BW	WW	YW	MILK	ME	HPG	CEM	STAY	MB	REA
83	50	0	0.9	70	113	35	8	10	6	9	0.52	0.25



Outer Limit was one of two bulls we selected from Andras Stock Farm's '14 Bull sale, posting a record of: 76 BW, 106 WR, 107 YR, 122 IMF and 108 REA. Maternally he is out of a daughter of perpetual growth and muscle leader, Pacific Pride. Co-owned with Andras Stock Farm, Manchester, IL. SEMEN AVAILABLE.



FRITZ JUSTICE 8013

01/31/08 1A 100.0% FJE/8013 #1255322

BUF CRK PATRIOT M183

VGW JUSTICE 614

VGW M82-FIREFLY 0479

5L HOBO BEN 04-4422

FRITZ CHRIS 6047

FRITZ CRIS 1051

RAAA EPDs

HB	GM	CED	BW	WW	YW	MILK	ME	HPG	CEM	STAY	MB	REA
124	52	9	-1.9	79	128	31	0	7	10	10	0.57	0.07

Justice is the powerful growth sire at Accelerated Genetics. He sired many of our top calves the past two years including two of our Pen of Three Bulls at the NWSS this past January. A son, Jeffries Checotah 817C sold in the Mile High Classic Red Angus sale to ABS, and Jeffries Commander 793C was retained in the herd.

Our Latest Herdsires...

JEFFRIES BLUEPRINT 258Z

12/29/12 1A 100.0% JLJ/258Z #1603489

HXC CONQUEST 4405P

C-BAR CONTOUR 107X

BROWN C- ABIGRACE S602

FEDDES BIG SKY R9

BROWN MS BIG SKY U7877

BROWN C- JOLENE S605

RAAA EPDs

HB	GM	CED	BW	WW	YW	MILK	ME	HPG	CEM	ST	MB	REA
126	53	6	-0.9	84	125	19	4	13	2	12	0.86	0.56



Blueprint topped our '14 sale to Accelerated Genetics. He stacks 11 traits in the top one third of the breed and is royally bred. Co-owned with Accelerated Genetics.

ANDRAS JLJ SMART CHOICE R264

09/01/12 1A 100.0% WSA/R264 #1600121

ANDRAS BANDO B120

ANDRAS MR BLACK JEANS R179

ANDRAS AMY B121

**\$25
per
unit**

ANDRAS THUNDER B106

ANDRAS KURUBA R194

ANDRAS KURUBA B71

RAAA EPDs

HB	GM	CED	BW	WW	YW	MILK	ME	HPG	CEM	ST	MB	REA
106	52	9	-3.1	60	104	32	-2	11	4	9	0.63	0.21

Exciting \$14,000 second high seller from the '14 Andras bull sale, Smart Choice is a complete outcross. Co-owned with Andras Stock Farm, IL.

JEFFRIES REDDINGTON 865C

01/15/15 1A 100.0% JLJ/865C #1750221

ANDRAS IN FOCUS B152

ANDRAS NEW DIRECTION R240

ANDRAS KURUBA B111

**Semen
Available**

RED FINE LINE MULBERRY 26P

JEFFRIES W563

JEFFRIES LA ANN L42-P298

RAAA EPDs

HB	GM	CED	BW	WW	YW	MILK	ME	HPG	CEM	ST	MB	REA
105	51	4	-2.0	68	114	27	-4	16	9	8	0.48	0.09

Reddington 865C was a member of our '16 NWSS Pen of Three bulls and sold in the Mile High Classic sale to Pieper's, NE, and McEntire Red Angus, OK.

JEFFRIES CHECOTAH 817C

01/06/15 1A 100.0% JLJ/817C #1750203

VGW JUSTICE 614

FRITZ JUSTICE 8013

FRITZ CHRIS 6047

RED FINE LINE MULBERRY 26P

JEFFRIES MS LAKOTA Z11

BASIN LAKOTA 8331

RAAA EPDs

HB	GM	CED	BW	WW	YW	MILK	ME	HPG	CEM	ST	MB	REA
184	52	5	-0.6	87	141	26	1	12	11	17	0.54	0.19



Checotah was a member of our '16 NWSS Pen of Three Bulls and sold in the Mile High Classic sale to ABS Global in WI, and he is now one of their best young sires.

JEFFRIES COMMANDER 793C

01/01/15 1A 100.0% JLJ/793C #1750180

VGW JUSTICE 614

FRITZ JUSTICE 8013

FRITZ CHRIS 6047

BECKTON EPIC U368 KM

JEFFRIES MS TWYLA X764

BASIN SAM 8948

RAAA EPDs

HB	GM	CED	BW	WW	YW	MILK	ME	HPG	CEM	ST	MB	REA
132	53	11	-3.5	71	120	33	-6	9	9	10	0.56	0.41*



Commander 793C was a member of out 2016 NWSS Pen of Three Bulls. He posted a 793 AWW, 113 WR, 1285 AYW and 118 YR, with only a 73 BW, and he scanned with a huge 16.2 REA! He has been used exclusively at Jeffries and is a service sire as well as the sire of several ET matings born this past spring. HE IS FOR SALE, INQUIRE TODAY.

Jeffries Age-Advantaged Red Angus Bulls...



...can walk the walk...



and talk the talk...

...and are ready to go to work for you!



JEFFRIES RED ANGUS - AGE ADVANTAGED 18 MONTH OLD BULLS



Herd Bull Prospect...



LOT 1	JEFFRIES NAVIGATOR 114D														
	01-05-2016 JLJ/114D A-100% AR #3534178														
ANDRAS IN FOCUS B152 ANDRAS NEW DIRECTION R240 ANDRAS KURUBA B111 LSF JBOB EXPECTATION 6034S JEFFRIES MS PRIMROSE X667 BASIN PRIMROSE 8216 MPPA: 113.0									<i>Performance</i>						
									BW			78			
									AWW			905			
									7/25 WT			1570			
									7/25 SC			37.0 cm			
									%IMF			5.85			
									REA			15.2			
HBLD	GRID	CED	BW	WW	YW	MILK	ME	HPG	CEM	STAY	MB	YG	CW	REA	
EPDs	100	53	5	-1.5	79	132	28	0	14	9	7	0.63	0.20	46	0.07
Top%	50	6	54	50	3	1	7	49	16	5	85	18	98	2	61



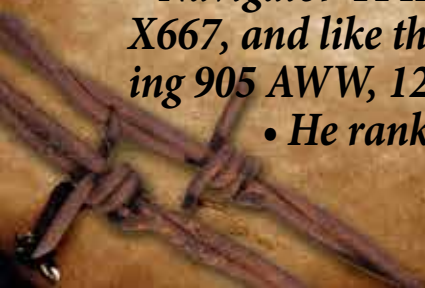
• This year we are leading off the sale with a pair of maternal brothers by two different sires. Both bulls were used to clean up our replacement heifers

and we feel that both bulls have big-time herd bull potential.

• Navigator 114D is the natural calf out of our top donor cow, Ms Primrose X667, and like the rest of her progeny he didn't disappoint us, posting an amazing 905 AWW, 124 WR, 1347 AYW, 122 YR, 138 IMF ratio and 110 REA ratio!

• He ranks in the top 18% or better for 8 traits!

• Selling 1/2 interest and full possession.





JEFFRIES RED ANGUS - AGE ADVANTAGED 18 MONTH OLD BULLS



Herd Bull Prospect...



LOT 2		JEFFRIES GLADIATOR 24C													
		12-22-2015 JLJ/24C A-100% AR #3534240													
BIEBER ROUSE SAMURAI X22 BIEBER SPARTACUS A193 BIEBER TILLY 233U LSF JBOB EXPECTATION 6034S JEFFRIES MS PRIMROSE X667 BASIN PRIMROSE 8216 MPPA: 113.0										Performance					
										BW			78		
										AWW			731		
										7/25 WT			1490		
										7/25 SC			39.0 cm		
			%IMF			5.26									
			REA			14.8									
	HBLD	GRID	CED	BW	WW	YW	MILK	ME	HPG	CEM	STAY	MB	YG	CW	REA
EPDs	142	53	6	-2.5	75	118	25	8	15	6	13	0.92	0.19	36	0.21
Top%	11	5	49	33	5	6	19	98	10	26	13	3	97	10	34

• We feel that Gladiator 24C could be one of the best bulls we have ever raised! We've used him to clean up our replacement heifers and we would

like to collect and use semen back in our program.

• His data is flawless, ranking him in the top 19% or better for 9 traits. He also scanned extremely well, posting a 121 IMF ratio and a 108 REA ratio.

• His dam is our top donor, earning an impressive 113 MPPA with a 114 AWR and 110 AYR on five natural calves.

• Selling 1/2 interest and 1/2 possession.





JEFFRIES RED ANGUS - AGE ADVANTAGED 18 MONTH OLD BULLS



Herd Bull Prospect...



LOT 3	JEFFRIES THUNDER ROLLS 230D														
	02-03-2016 JLJ/230D A-100% AR #3615373														
ANDRAS THUNDER R196 ANDRAS THUNDER A092 MLK CRK LAKINA 502 BIEBER H HUGHES W109 JEFFRIES MS JANE Z236 MS ADVANCER OF 4L R28P MPPA: 106.2										Performance					
										BW		71			
										AWW		739			
										7/25 WT		1365			
										7/25 SC		40.0 cm			
										%IMF		5.26			
										REA		13.2			
	HBID	GRID	CED	BW	WW	YW	MILK	ME	HPG	CEM	STAY	MB	YG	CW	REA
EPDs	98	50	4	-0.5	78	116	23	2	12	3	10	0.48	0.12	38	0.21
Top%	54	37	66	69	3	7	34	66	39	80	54	40	90	8	33



Lot 3's maternal sister, Ms Jane B735, is pictured here in '15 when she topped our heifer calf offering to 9 Mile Ranch in WA, for \$17,000!

• **Wow... check out this stud! Thunder Rolls 230D jumped through all the hoops, posting a 104 WR and 104 YR with only a 93 BR, and he was the #1 IMF bull in a 27 head contemporary group, posting a 131 ratio!**

• **His dam, Ms Jane Z236, has been cruising along with a 106.2 MPPA. Her first calf was a beautiful New Direction daughter that topped our '15 sale to 9 Mile Ranch in WA, for \$17,000.**

• **Selling 1/2 interest and full possession.**



Lots 4 & 5... Herd Bull Prospect by Rollin Deep!



Lot 4... packed with performance, carcass and good looks!

• This powerhouse did it all... posting a 116 WR, 114 YR, 104 IMF and 111 REA!

• His dam, Dynamo 8359, is one of elite ET donor cows, earning a 107 MPPA on her natural calves, including two top daughters retained in the herd and two more working in purebred herds. Her ET Quest sons are featured as Lots 15-17... don't miss them!

• Selling 1/2 interest and full possession.

LOT 4		JEFFRIES ROLLIN DEEP 128D													
		01-07-2016 JLJ/128D A-100% AR #3534187													
BIEBER ROOSEVELT W384 BIEBER ROLLIN DEEP Y118 BIEBER TILLY 399W RED FINE LINE MULBERRY 26P BASIN DYNAMO 8359 BASIN DYNAMO 3016 MPPA: 107.0										Performance					
										BW			89		
										AWW			849		
										7/25 WT			1590		
										7/25 SC			42.0 cm		
%IMF			4.41												
REA			15.3												
	HBLD	GRID	CED	BW	WW	YW	MILK	ME	HPG	CEM	STAY	MB	YG	CW	REA
EPDs	118	51	1	0.8	78	126	23	0	18	6	11	0.61	0.23	46	0.27
Top%	29	23	89	88	3	2	32	42	1	35	37	20	99	2	25



Lot 5... was good enough to clean up our replacement heifers!

• The result of our ET program, Rollin Deep 136D was a top performer as well as one of our best scanning bulls, posting a 112 IMF ratio and 107 REA ratio!

• We used this bull to clean up our replacement heifers this spring.

• Selling 1/2 interest and full possession.

LOT 5	JEFFRIES ROLLIN DEEP 136D														
	01-08-2016 JLJ/136D A-100% AR #3534194														
BIEBER ROOSEVELT W384 BIEBER ROLLIN DEEP Y118 BIEBER TILLY 399W BASIN EXT 8926 JEFFRIES MS GOLD CAP X665 JEFFRIES GOLD CAP 505U MPPA: 104.2										Performance					
										BW			90		
										AWW			838		
										7/25 WT			1485		
										7/25 SC			40.0 cm		
%IMF			4.51												
REA			15.3												
HBLD	GRID	CED	BW	WW	YW	MILK	ME	HPG	CEM	STAY	MB	YG	CW	REA	
EPDs	101	51	6	-1.2	69	111	24	5	16	2	9	0.54	0.15	35	0.25
Top%	49	25	44	56	15	11	25	90	4	83	67	29	94	13	28

JEFFRIES RED ANGUS - AGE ADVANTAGED 18 MONTH OLD BULLS

Lots 6-8... a set of Rollin Deep sons with explosive growth & less birth!

LOT	JEFFRIES ROLLIN DEEP 110D														
6	01-04-2016 JLJ/110D A-100% AR #3534176														
BIEBER ROOSEVELT W384 BIEBER ROLLIN DEEP Y118 BIEBER TILLY 399W										Performance					
RED FINE LINE MULBERRY 26P BASIN BONNEBELL 8410 BASIN BONNEBELL 4225 MPPA: 100.0										BW	75				
										AWW	721				
										7/25 WT	1435				
										7/25 SC	41.5 cm				
										%IMF	3.98				
										REA	12.5				
HBLD	GRID	CED	BW	WW	YW	MILK	ME	HPG	CEM	STAY	MB	YG	CW	REA	
EPDs	135	49	5	-1.2	65	101	22	2	18	5	13	0.35	0.12	28	0.23
Top%	15	56	53	56	26	27	43	62	1	47	13	68	90	27	30



• Here is one of the most attractive bulls in the offering. Lot 6 possesses the power and performance of his sire with the length and style of his maternal grandsire. Two maternal brothers have sold to TX.



LOT	JEFFRIES ROLLIN DEEP 124D														
7	01-06-2016 JLJ/124D A-100% AR #3534185														
BIEBER ROOSEVELT W384 BIEBER ROLLIN DEEP Y118 BIEBER TILLY 399W										Performance					
BFCK CHEROKEE CNYN 4912 MEADO-WEST PERSUASION DFRA AL THEA 107 MPPA: 103.0										BW	62				
										AWW	619				
										7/25 WT	1415				
										7/25 SC	39.0 cm				
										%IMF	3.87				
										REA	15.2				
HBLD	GRID	CED	BW	WW	YW	MILK	ME	HPG	CEM	STAY	MB	YG	CW	REA	
EPDs	86	51	4	-1.5	71	110	25	1	13	-4	9	0.45	0.00	33	0.34
Top%	68	24	66	50	12	13	19	56	22	99	60	45	43	16	17

• An extra long made, huge ribeye Rollin Deep son out of Persuasion, one of the most influential cows in the breed with over 112 progeny to her record to date! A pair of maternal brothers by New Direction sell as Lots 72 and 73.

LOT	JEFFRIES ROLLIN DEEP 30C														
8	12-23-2015 JLJ/30C A-100% AR #3534250														
BIEBER ROOSEVELT W384 BIEBER ROLLIN DEEP Y118 BIEBER TILLY 399W										Performance					
C-BAR CONTOUR 107X JEFFRIES MS JOLINE Z243 BROWN MS BIG SKY U7877 MPPA: 99.2										BW	70				
										AWW	732				
										7/25 WT	1290				
										7/25 SC	38.0 cm				
										%IMF	4.31				
										REA	13.8				
HBLD	GRID	CED	BW	WW	YW	MILK	ME	HPG	CEM	STAY	MB	YG	CW	REA	
EPDs	105	51	6	-1.5	69	111	26	1	15	1	10	0.59	0.14	34	0.22
Top%	45	21	48	50	15	12	12	58	7	91	56	23	93	14	32



• Wow, check out the beef in this dude's shorts! This powerhouse is out of Ms Joline Z243, the \$26,500 pick of the herd that sold in Denver back in '15 to B Good Beef Genetics in TX.



JEFFRIES RED ANGUS - AGE ADVANTAGED 18 MONTH OLD BULLS



Lots 9 & 10... a pair of full brothers that will take you in the right direction!



LOT 9		JEFFRIES NEW DIRECTION 130D														
		01-07-2016 JLJ/130D A-100% AR #3534188														
ANDRAS IN FOCUS B152 ANDRAS NEW DIRECTION R240 ANDRAS KURUBA B111 C-BAR CONTOUR 107X JEFFRIES MS JENA Z244 BROWN MS BIG SKY U7877 MPPA: 97.4										Performance						
										BW		82				
										AWW		797				
										7/25 WT		1420				
										7/25 SC		36.5 cm				
										%IMF		4.14				
										REA		13.9				
HBLD		GRID	CED	BW	WW	YW	MILK	ME	HPG	CEM	STAY	MB	YG	CW	REA	
EPDs	75	51	6	-3.1	61	99	26	-1	12	5	5	0.56	0.04	25	0.18	
Top%	80	16	40	23	43	31	14	33	45	38	92	27	62	39	39	

- *Unreal dimension and shape in this stud! The first of two full brothers, Lot 9 posted an impressive 797 AWW!*
- *His dam, Ms Jena Z244, is a full sister to Ms Joline Z243 that sold in the '15 Denver sale as the \$26,500 pick of the herd.*



LOT 10		JEFFRIES NEW DIRECTION 148D														
		01-10-2016 JLJ/148D A-100% AR #3534201														
ANDRAS IN FOCUS B152 ANDRAS NEW DIRECTION R240 ANDRAS KURUBA B111 C-BAR CONTOUR 107X JEFFRIES MS JENA Z244 BROWN MS BIG SKY U7877 MPPA: 97.4										Performance						
										BW		83				
										AWW		688				
										7/25 WT		1220				
										7/25 SC		36.0 cm				
										%IMF		5.34				
										REA		14.6				
	HBLD	GRID	CED	BW	WW	YW	MILK	ME	HPG	CEM	STAY	MB	YG	CW	REA	
EPDs	78	53	6	-3.1	61	99	26	-1	12	5	5	0.81	-0.04	25	0.25	
Top%	77	5	40	23	43	31	14	33	45	38	92	7	30	39	27	

- *The second of two full brothers, this guy posted an impressive carcass scan with a 123 IMF ratio and 106 REA ratio!*
- *They come from the Jolene-Jaylo cow family that is responsible for some of the breed's EPD profiling cattle.*



JEFFRIES RED ANGUS - AGE ADVANTAGED 18 MONTH OLD BULLS

Lots 11 & 12... a pair of full brothers that define the word 'smooth'!



LOT	JEFFRIES NEW DIRECTION 76C													
11	12/29/2015 JLJ/76C A-100% AR #3534270													
ANDRAS IN FOCUS B152 ANDRAS NEW DIRECTION R240 ANDRAS KURUBA B111							Performance							
BASIN TREND SETTER 6074							BW		77					
BASIN LASS 8544							AWW		670					
BASIN LASS 5250							7/25 WT		1400					
MPPA: 102.7							7/25 SC		38.0 cm					
							%IMF		4.51					
							REA		12.6					
HBLD	GRID	CED	BW	WW	YW	MILK	ME	HPG	CEM	STAY	MB	YG	CW	REA
EPDs	65	49	5	-1.6	55	87	25	-4	12	5	5	0.61	0.16	-0.17
Top%	87	49	54	49	62	57	22	18	48	38	92	21	95	96

• Here is a super stout, deep and easy doing bull that will add pounds... and he only had a 77 BW!

• His dam, Lass 8544, is one of our top donors from the foundation Basin herd.



Lot 12... will add length and style to your next calf crop!

LOT	JEFFRIES NEW DIRECTION 37C													
12	12-24-2015 JLJ/37C A-100% AR #3534253													
ANDRAS IN FOCUS B152 ANDRAS NEW DIRECTION R240 ANDRAS KURUBA B111							Performance							
BASIN TREND SETTER 6074							BW		87					
BASIN LASS 8544							AWW		674					
BASIN LASS 5250							7/25 WT		1365					
MPPA: 102.7							7/25 SC		37.5 cm					
							%IMF		4.63					
							REA		12.7					
HBLD	GRID	CED	BW	WW	YW	MILK	ME	HPG	CEM	STAY	MB	YG	CW	REA
EPDs	65	49	5	-1.6	55	87	25	-4	12	5	5	0.64	0.22	-0.16
Top%	88	52	53	49	62	57	22	18	48	38	92	18	98	95

• This dark red, stylish full brother to Lot 11 is very attractive, and he is loaded with carcass quality!

• His maternal sisters lead off our bred heifer offering!



JEFFRIES RED ANGUS - AGE ADVANTAGED 18 MONTH OLD BULLS



Lots 13 & 14... New Direction sons out of foundation Basin dams!



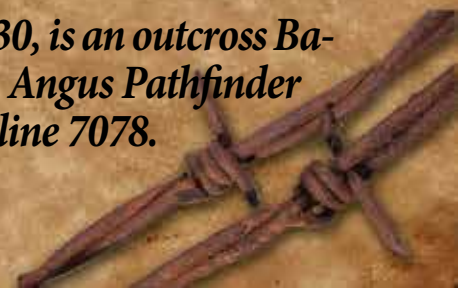
- Lot 13 is a dark red tank with a super quiet disposition!
- His dam, Lakota 8331, is a foundation Basin donor cow that we sold last year to Linthicum Red Angus in Welch, OK.

LOT 13	JEFFRIES NEW DIRECTION 44C														
	12-25-2015 JLJ/44C A-100% AR #3534257														
ANDRAS IN FOCUS B152 ANDRAS NEW DIRECTION R240 ANDRAS KURUBA B111 BASIN EXT 5233 BASIN LAKOTA 8331 BASIN LAKOTA 3005 MPPA: 102.6										Performance					
										BW		81			
										AWW		675			
										7/25 WT		1350			
										7/25 SC		37.5 cm			
										%IMF		3.98			
										REA		12.8			
	HBLD	GRID	CED	BW	WW	YW	MILK	ME	HPG	CEM	STAY	MB	YG	CW	REA
EPDs	80	50	7	-2.6	60	99	30	-2	11	9	6	0.45	0.12	25	-0.11
Top%	76	32	38	31	44	32	2	30	63	4	91	45	91	38	91



LOT 14	JEFFRIES NEW DIRECTION 138D														
	01-08-2016 JLJ/138D A-100% AR #3534196														
ANDRAS IN FOCUS B152 ANDRAS NEW DIRECTION R240 ANDRAS KURUBA B111 BASIN TREND SETTER 6074 BASIN RED QUEEN 8630 BASIN RED QUEEN 6114 MPPA: 99.2										Performance					
										BW		89			
										AWW		708			
										7/25 WT		1290			
										7/25 SC		39.5 cm			
										%IMF		4.31			
										REA		13.0			
	HBLD	GRID	CED	BW	WW	YW	MILK	ME	HPG	CEM	STAY	MB	YG	CW	REA
EPDs	51	50	4	-0.9	57	90	23	-3	10	7	4	0.50	0.03	23	0.11
Top%	93	47	68	62	57	50	31	23	79	19	95	36	59	46	52

- Stout, long and clean best describe this good looking rascal!
- His dam, Queen 8630, is an outcross Basin cow going back to Angus Pathfinder sire, Vermillion Dateline 7078.



Herd Bull Prospect...



LOT 15		JEFFRIES VISION QUEST 81C														
		12-29-2015 JLJ/81C A-100% AR #3534273														
HXC CONQUEST 4405P C-T THE QUEST 1103 C-T TINA 0972 RED FINE LINE MULBERRY 26P BASIN DYNAMO 8359 BASIN DYNAMO 3016 MPPA: 107.0										Performance						
										BW AWW 7/25 WT 7/25 SC %IMF REA			80 724 1350 40.0 cm 5.24 14.1			
	HBLD	GRID	CED	BW	WW	YW	MILK	ME	HPG	CEM	STAY	MB	YG	CW	REA	
EPDs	107	51	3	-0.9	64	103	19	1	14	5	10	0.77	0.11	30	0.18	
Top%	42	17	71	62	30	23	73	55	16	50	50	8	87	22	38	



Lots 15-17 are paternal brothers to the \$100,000 5L Out In Front that we own with 9 Mile Ranch, 5L Red Angus and the Legacy Genetics group.

• I don't know if we have ever raised a more attractive and complete bull than Vision Quest 81C! He's got it all, from his awesome performance to his exceptional ultrasound scan with a 121 IMF ratio and 103 REA ratio!

• His dam, Dynamo 8359, is one of our Elite donors. Her progeny include a Rollin Deep daughter who is the dam of Lot 54, and her natural born Rollin Deep son is featured herdbull selling as Lot 4.

• Selling 1/2 interest and full possession.



JEFFRIES RED ANGUS - AGE ADVANTAGED 18 MONTH OLD BULLS

Lots 15-17... this powerful set of flush brothers will put you in the driver's seat!



Lot 16... you have to appreciate the uniformity of these ET brothers!

- Lot 16 is a spitting image of his ET brother, Lot 15! Imagine the consistency of the calves sired by these bulls.
- His dam, Dynamo 8359, has earned a 107 MPPA with two daughters in the herd, a daughter at Chain Ranch, and another daughter working at Barry Horsley's.

Lot 17... the deepest and the lightest BW of the three brothers!

LOT 16		JEFFRIES QUEST 51C													
		12-26-2015 JLJ/51C A-100% AR #3534259													
HXC CONQUEST 4405P C-T THE QUEST 1103 C-T TINA 0972 RED FINE LINE MULBERRY 26P BASIN DYNAMO 8359 BASIN DYNAMO 3016 MPPA: 107.0										Performance					
										BW			78		
										AWW			690		
										7/25 WT			1325		
										7/25 SC			38.0 cm		
										%IMF			4.32		
REA			12.4												
HBLD		GRID	CED	BW	WW	YW	MILK	ME	HPG	CEM	STAY	MB	YG	CW	REA
EPDs	104	50	3	-0.9	64	103	19	1	14	5	10	0.58	0.18	30	-0.01
Top%	45	35	71	62	30	23	73	55	16	50	50	24	97	22	76

LOT 17		JEFFRIES QUEST 157D													
		01-14-2016 JLJ/157D A-100% AR #3534207													
HXC CONQUEST 4405P C-T THE QUEST 1103 C-T TINA 0972 RED FINE LINE MULBERRY 26P BASIN DYNAMO 8359 BASIN DYNAMO 3016 MPPA: 107.0										Performance					
										BW AWW 7/25 WT 7/25 SC %IMF REA		68 690 1285 38.0 cm 4.02 13.9			
	HBLD	GRID	CED	BW	WW	YW	MILK	ME	HPG	CEM	STAY	MB	YG	CW	REA
EPDs	104	50	3	-0.9	64	103	19	1	14	5	10	0.52	0.18	30	0.16
Top%	46	40	71	62	30	23	73	55	16	50	50	32	97	22	43



- Just close your eyes and throw a rock at these three brothers... believe me you can't go wrong with any of them!
- Lot 17 was the lightest at birth, and he might be the deepest bodied of the three!

JEFFRIES RED ANGUS - AGE ADVANTAGED 18 MONTH OLD BULLS

Lots 18-21... you will not find a set of brothers that are stouter than these studs!



- Leading off this unreal set of full brothers, Lot 18 is absolutely stuffed with performance and carcass quality!
- His dam, Ms Katy X658, is one of our elite ET donors and she has some of our stoutest calves every year!

Remember this guy... Jeffries Every Direction is a mat. bro. to Lots 19-21 that sold last year to Jake Gross in Arcadia, KS!



LOT 18	JEFFRIES QUEST 85C														
	12-30-2015 JLJ/85C A-100% AR #3534274														
HXC CONQUEST 4405P C-T THE QUEST 1103 C-T TINA 0972 MESSMER PACKER S008 JEFFRIES MS KATY X658 MS ADVANCER OF 4L 89R MPPA: 102.7										Performance					
										BW		85			
										AWW		769			
										7/25 WT		1450			
										7/25 SC		41.0 cm			
										%IMF		5.59			
										REA		13.3			
	HBLD	GRID	CED	BW	WW	YW	MILK	ME	HPG	CEM	STAY	MB	YG	CW	REA
EPDs	70	50	3	-0.3	65	96	18	5	10	0	8	0.78	0.22	27	0.03
Top%	84	46	71	72	28	37	79	86	76	97	77	8	98	33	70



This full sister was a featured halter heifer that sold last year to Caelyn Ellison in MO!

LOT 19	JEFFRIES QUEST 40C														
	12-25-2015 JLJ/40C A-100% AR #3534256														
HXC CONQUEST 4405P C-T THE QUEST 1103 C-T TINA 0972 MESSMER PACKER S008 JEFFRIES MS KATY X658 MS ADVANCER OF 4L 89R MPPA: 102.7										Performance					
										BW		70			
										AWW		706			
										7/25 WT		1350			
										7/25 SC		41.0 cm			
										%IMF		5.09			
										REA		13.4			
	HBLD	GRID	CED	BW	WW	YW	MILK	ME	HPG	CEM	STAY	MB	YG	CW	REA
EPDs	70	49	3	-0.3	65	96	18	5	10	0	8	0.67	0.14	27	0.04
Top%	85	49	71	72	28	37	79	86	76	97	77	14	94	33	68



- Lot 19 is another deep made, easy doing Quest son with a 117 IMF ratio!
- A pair of juniors, William Guthrie and Brock Hutchinson, purchased the pick of our '16 calf crop for \$18,000, and selected Ms Katy X658's daughter by Thunder.



JEFFRIES RED ANGUS - AGE ADVANTAGED 18 MONTH OLD BULLS



Lots 20 & 21... same pedigree with more ribeye area!



**Lot 20...
posted a
14.6 REA with
a 103 ratio!**

- Lot 20 might be the longest and growthiest of the flush brothers.
- Another maternal brother by Fritz Justice is featured as Lot 22.

LOT 20	JEFFRIES QUEST 133D														
	01-07-2016 JLJ/133D A-100% AR #3534191														
HXC CONQUEST 4405P C-T THE QUEST 1103 C-T TINA 0972 MESSMER PACKER S008 JEFFRIES MS KATY X658 MS ADVANCER OF 4L 89R MPPA: 102.7										Performance					
										BW		80			
										AWW		672			
										7/25 WT		1370			
										7/25 SC		39.0 cm			
										%IMF		3.74			
										REA		14.6			
	HBLD	GRID	CED	BW	WW	YW	MILK	ME	HPG	CEM	STAY	MB	YG	CW	REA
EPDs	68	49	3	-0.3	65	96	18	5	10	0	8	0.40	0.07	27	0.17
Top%	86	66	71	72	28	37	79	86	76	97	77	58	74	33	40

**Lot 21...
posted the largest
REA of the
brothers at 15.9in!**



LOT 21	JEFFRIES QUEST 32C														
	12-24-2015 JLJ/32C A-100% AR #3534251														
HXC CONQUEST 4405P C-T THE QUEST 1103 C-T TINA 0972 MESSMER PACKER S008 JEFFRIES MS KATY X658 MS ADVANCER OF 4L 89R MPPA: 102.7										Performance					
										BW		71			
										AWW		661			
										7/25 WT		1250			
										7/25 SC		39.0 cm			
										%IMF		4.00			
										REA		15.9			
	HBLD	GRID	CED	BW	WW	YW	MILK	ME	HPG	CEM	STAY	MB	YG	CW	REA
EPDs	74	50	5	-1.4	64	94	18	5	10	0	8	0.52	0.03	24	0.15
Top%	81	45	55	52	31	41	79	86	76	96	77	32	61	42	45

- The biggest REA of all four brothers with a 15.9in REA!
- You will travel far and long to find a better set of full brothers... we hope you take advantage of their genetic lead-time!



JEFFRIES RED ANGUS - AGE ADVANTAGED 18 MONTH OLD BULLS

Lots 22-24... Fritz Justice sons out of our top ET donor dams!

LOT 22		JEFFRIES JUSTICE 149D													
		01-10-2016 JLJ/149D A-100% AR #3534202													
VGW JUSTICE 614 FRITZ JUSTICE 8013 FRITZ CHRIS 6047 MESSMER PACKER S008 JEFFRIES MS KATY X658 MS ADVANCER OF 4L 89R MPPA: 102.7										Performance					
										BW		81			
										AWW		738			
										7/25 WT		1410			
										7/25 SC		40.0 cm			
										%IMF		4.26			
										REA		13.4			
	HBLD	GRID	CED	BW	WW	YW	MILK	ME	HPG	CEM	STAY	MB	YG	CW	REA
EPDs	98	50	5	-0.4	74	113	25	4	8	6	10	0.59	0.12	36	0.16
Top%	53	30	54	71	6	9	19	81	94	29	55	22	91	10	43



- A powerful maternal brother to Lots 18-21. These Justice sons will add pounds of performance at weaning!



LOT		JEFFRIES JUSTICE 11C													
23		12-20-2015 JLJ/11C A-100% AR #3534182													
VGW JUSTICE 614 FRITZ JUSTICE 8013 FRITZ CHRIS 6047 BASIN CHEROKEE 5856 BASIN LAURA 8524 BASIN LAURA 5046 MPPA: 108.6										Performance					
										BW			71		
										AWW			882		
										7/25 WT			1500		
										7/25 SC			40.0 cm		
%IMF			4.36												
REA			14.9												
	HBLD	GRID	CED	BW	WW	YW	MILK	ME	HPG	CEM	STAY	MB	YG	CW	REA
EPDs	103	51	8	-2.2	76	115	20	4	10	6	9	0.65	0.11	35	0.17
Top%	47	15	28	38	4	7	61	81	73	30	71	16	88	12	40

- One of the stoutest bulls in the offering, Lot 23 posted an amazing 882 AWW with only a 71 BW! He is the natural born calf out of our elite ET donor dam, Basin Laura 8524, who has earned a 108.6 MPPA.

LOT 24		JEFFRIES JUSTICE 86C													
		12-30-2015 JLJ/86C A-100% AR #3534275													
VGW JUSTICE 614 FRITZ JUSTICE 8013 FRITZ CHRIS 6047 BASIN TREND SETTER 6074 BASIN LASS 8544 BASIN LASS 5250 MPPA: 102.7										Performance					
										BW			76		
										AWW			741		
										7/25 WT			1345		
										7/25 SC			38.0 cm		
			%IMF			4.22									
			REA			15.8									
HBLD	GRID	CED	BW	WW	YW	MILK	ME	HPG	CEM	STAY	MB	YG	CW	REA	
EPDs	110	50	7	-1.5	63	96	26	0	9	7	10	0.61	0.13	25	0.10
Top%	38	40	35	50	33	37	16	42	84	21	43	20	91	39	54



- Powerful REA in this natural born calf out of our donor, Basin Lass 8544. He has two maternal siblings by New Direction selling as Lots 11 and 12.



JEFFRIES RED ANGUS - AGE ADVANTAGED 18 MONTH OLD BULLS



Lots 25-27... full brothers from the famed Jolene cow family!

LOT		JEFFRIES JUSTICE 29C													
25		12-23-2015 JLJ/29C A-100% AR #3534247													
VGW JUSTICE 614 FRITZ JUSTICE 8013 FRITZ CHRIS 6047 C-BAR CONTOUR 107X JEFFRIES MS JENA Z244 BROWN MS BIG SKY U7877 MPPA: 97.4										Performance					
										BW	76				
										AWW	819				
										7/25 WT	1375				
										7/25 SC	36.0 cm				
										%IMF	4.35				
										REA	14.1				
HBLD	GRID	CED	BW	WW	YW	MILK	ME	HPG	CEM	STAY	MB	YG	CW	REA	
EPDs	120	52	8	-2.6	70	111	27	2	10	6	10	0.65	0.03	32	0.33
Top%	27	9	26	31	13	11	12	64	82	22	43	17	57	17	18



• Huge EPD spread on this 819 AWW honker! His full brother sells as Lot 26, and a pair of maternal brothers by New Direction are featured as Lots 9 and 10.



LOT		JEFFRIES JUSTICE 74C													
26		12-29-2015 JLJ/74C A-100% AR #3534268													
VGW JUSTICE 614 FRITZ JUSTICE 8013 FRITZ CHRIS 6047 C-BAR CONTOUR 107X JEFFRIES MS JENA Z244 BROWN MS BIG SKY U7877 MPPA: 97.4										Performance					
										BW	65				
										AWW	692				
										7/25 WT	1320				
										7/25 SC	39.0 cm				
										%IMF	5.86				
										REA	15.4				
HBLD	GRID	CED	BW	WW	YW	MILK	ME	HPG	CEM	STAY	MB	YG	CW	REA	
EPDs	123	54	8	-2.6	70	111	27	2	10	6	10	0.96	0.00	32	0.47
Top%	24	2	26	31	13	11	12	64	82	22	43	3	43	17	9

• This dark red, attractive bull puts it all together... posting a 65 BW, 135 IMF ratio and 112 REA ratio! His full brother sells as Lot 25, and maternal brothers are featured as Lots 9 and 10.

LOT		JEFFRIES JUSTICE 117D													
27		01-05-2016 JLJ/117D A-100% AR #3534180													
VGW JUSTICE 614 FRITZ JUSTICE 8013 FRITZ CHRIS 6047 C-BAR CONTOUR 107X JEFFRIES MS JOLINE Z243 BROWN MS BIG SKY U7877 MPPA: 99.2										Performance					
										BW	80				
										AWW	683				
										7/25 WT	1410				
										7/25 SC	40.0 cm				
										%IMF	3.74				
										REA	13.8				
HBLD	GRID	CED	BW	WW	YW	MILK	ME	HPG	CEM	STAY	MB	YG	CW	REA	
EPDs	118	52	8	-2.4	71	114	28	2	10	6	10	0.53	0.06	34	0.25
Top%	29	13	28	34	10	8	8	65	82	22	43	31	74	13	27



• Extra length and dimension on this powerful Justice son... his dam was the \$26,500 pick of the herd that sold in Denver back in '15 to B Good Beef Genetics in TX.



JEFFRIES RED ANGUS - AGE ADVANTAGED 18 MONTH OLD BULLS

Lots 28 & 29... for those that like to wean heavy, stout calves!



• Extra length and performance in this hoss, Lot 28 posted an awesome 842 AWW!

• His dam, Abigrace 257Z, was our pick of the females in C-Bar's '14 fall sale, and she has never dissapointed us!



Lot 28's dam, 257Z, pictured as a yearling when we purchased her from C-Bar Ranch

LOT 28	JEFFRIES JUSTICE 160D														
	01-15-2016 JLJ/160D A-100% AR #3534209														
VGW JUSTICE 614 FRITZ JUSTICE 8013 FRITZ CHRIS 6047 TR COLT 45 UT806 C-BAR ABIGRACE 257Z C-BAR ABIGRACE U875 MPPA: 105.4										Performance					
										BW		83			
										AWW		842			
										7/25 WT		1320			
										7/25 SC		38.0 cm			
										%IMF		3.96			
										REA		13.2			
	HBLD	GRID	CED	BW	WW	YW	MILK	ME	HPG	CEM	STAY	MB	YG	CW	REA
EPDs	114	51	6	-1.4	72	117	25	0	11	8	10	0.51	0.15	38	-0.01
Top%	34	20	41	52	9	6	19	44	58	9	55	35	94	8	78



• Lot 29 is a real eye catcher with extra style and an impressive muscle pattern!

• His dam, Priscilla 304S, is not for the meek or timid... this powerhouse cow is loaded with performance!



Lot 29's dam, Priscilla 304S, is one beast of a cow!

LOT 29	JEFFRIES ALLIANCE 52C														
	12-27-2015 JLJ/52C A-100% AR #3534260														
BECKTON NEBULA P P707 BROWN ALLIANCE X7795 C-BAR & BROWN ABIGRACE T714 RED BRYLOR NEW TREND 22 RED BRYLOR PRISCILLA 304S RED WIL-SEL PRISCILLA R. 21K MPPA: 100.0										Performance					
										BW		79			
										AWW		581			
										7/25 WT		1430			
										7/25 SC		40.0 cm			
										%IMF		3.88			
										REA		14.0			
	HBLD	GRID	CED	BW	WW	YW	MILK	ME	HPG	CEM	STAY	MB	YG	CW	REA
EPDs	120	50	-1	1.4	70	113	16	-3	16	2	13	0.45	0.02	39	0.03
Top%	27	37	96	93	14	10	87	23	6	88	11	45	56	6	70



EFFRIES RED ANGUS - AGE ADVANTAGED 18 MONTH OLD BULLS



Lots 30-32... powerful bulls from Charles & Kelly Massey!

LOT 30	MLCRA MASSEYS CHUTBSS C113														
	09-29-2015 MLCRA/C113 A-100% AR #3520567														
RED COMPASS MULBERRY 449M RED FINE LINE MULBERRY 26P RED DUS FAYETTE 8G K BAR C BARN ONE 404 CBR DINA 928-8105 CBR WRANGAL 632-314 MPPA: 100.8										Performance					
										BW			89		
										AWW			689		
										7/25 WT			1650		
										7/25 SC			37.0 cm		
										%IMF			3.47		
										REA			11.1		
	HBLD	GRID	CED	BW	WW	YW	MILK	ME	HPG	CEM	STAY	MB	YG	CW	REA
EPDs	106	47	-1	0.4	63	96	15	2	15	7	11	0.03	-0.02	28	0.34
Top%	43	87	97	83	34	37	90	67	8	13	29	96	38	29	18



• This guy will be a full 2yr old come sale time and he already was weighing 1650lbs back in July! He will cover a lot of country and a lot of cows!

LOT 31		MLCRA MASSEY S CAM C115													
		12-04-2015 MLCRA/C115 A-100% AR #3530148													
RED COMPASS MULBERRY 449M RED FINE LINE MULBERRY 26P RED DUS FAYETTE 8G LORENZEN CATALYST 6454 JEFFRIES P256-W591 JEFFRIES G1171-P256 MPPA: 104.0										Performance					
										BW			58		
										AWW			716		
										7/25 WT			1500		
										7/25 SC			39.0 cm		
%IMF			2.83												
REA			11.7												
HBLD	GRID	CED	BW	WW	YW	MILK	ME	HPG	CEM	STAY	MB	YG	CW	REA	
EPDs	142	49	1	-0.2	74	110	11	5	17	8	14	0.22	0.08	35	0.05
Top%	11	67	88	73	7	13	98	91	2	6	7	88	80	12	64



• Another deep, heavy made Mulberry son, Lot 31 comes from one of the foundation cow families at Jeffries. Expect this guy to put pounds on the plate and daughters in the herd.

LOT 32		MLCRA MASSEY S CORE C117													
		12-13-2015 MLCRA/C117 A-100% AR #3530145													
LSF TAKEOVER 9943W BIEBER TAKEOVER Z206 BIEBER ROSE 116W UBAR BARNEY 4016 JDRA MS BONNEBELL 866 JDRA BONNEBELLE 289 MPPA: 101.7										Performance					
										BW				79	
										AWW				659	
										7/25 WT				1390	
										7/25 SC				40.0 cm	
				%IMF				3.42							
				REA				12.4							
HBLD		GRID	CED	BW	WW	YW	MILK	ME	HPG	CEM	STAY	MB	YG	CW	REA
EPDs	104	51	5	0.5	67	108	27	2	11	5	10	0.82	0.07	35	0.31
Top%	46	17	51	85	19	16	9	68	66	50	51	6	74	12	20



• Super long made Takeover grandson from the Bonnell cow family. Lot 32 sports a 0.82 MB EPD ranked in the top 6% of the breed!



JEFFRIES RED ANGUS - AGE ADVANTAGED 18 MONTH OLD BULLS



Lots 33 & 34... a pair of sharp made outcross ET brothers!

LOT		JEFFRIES LEGACY 127D													
33		01-07-2016 JLJ/127D A-100% AR #3534186													
RED LAZY MC EYE SPY 64Y WPRA LEGACY A-314 WPRA EVERLEDA ENTENSE 610 RED FINE LINE MULBERRY 26P RED RED TIDE MARTINI 25W RED JD LANN MARTA 130P MPPA: 102.8										Performance					
										BW				82	
										AWW				700	
										7/25 WT				1350	
										7/25 SC				35.0 cm	
%IMF				3.86											
REA				13.8											
HBLD	GRID	CED	BW	WW	YW	MILK	ME	HPG	CEM	STAY	MB	YG	CW	REA	
EPDs	108	48	0	1.6	65	94	23	-10	15	4	12	0.31	-0.23	28	0.24
Top%	41	70	95	94	26	43	33	2	8	69	26	76	5	30	28



• Lot 33 and 34 are a pair of ET brothers that have looked good ever since they were babies. They will add length, performance and style to any calf crop.



LOT		JEFFRIES LEGACY 140D													
34		01-09-2016 JLJ/140D A-100% AR #3534198													
RED LAZY MC EYE SPY 64Y WPRA LEGACY A-314 WPRA EVERLEDA ENTENSE 610 RED FINE LINE MULBERRY 26P RED RED TIDE MARTINI 25W RED JD LANN MARTA 130P MPPA: 102.8										Performance					
										BW		83			
										AWW		652			
										7/25 WT		1220			
										7/25 SC		40.0 cm			
										%IMF		5.46			
										REA		13.0			
	HBLD	GRID	CED	BW	WW	YW	MILK	ME	HPG	CEM	STAY	MB	YG	CW	REA
EPDs	109	49	0	1.6	65	94	23	-10	15	4	12	0.74	-0.03	28	0.12
Top%	39	51	95	94	26	43	33	2	8	69	26	10	34	30	51

• Lot 34 is the second of two full ET brothers sired by WPRA Legacy A-314, the Canadian bred outcross sire that comes from the famed Angus family, Everelda Intense. Lot 34 posted a 136 IMF ratio!

Our granddaughter, Marcela Wilmoth... you have come a long way!



In 2011 at the ranch...



At the '17 OYE...



At the '17 NAJRAE...

... and we are very proud of you!



JEFFRIES RED ANGUS - AGE ADVANTAGED 18 MONTH OLD BULLS



ABS South America visits Jeffries Red Angus...



JEFFRIES RED ANGUS - AGE ADVANTAGED 18 MONTH OLD BULLS

Lots 35 & 36... power bulls that are athletic too... full brothers by Stronghold!

**Lot 35...
weighed in
on 7/25 at
1600 lbs!**



LOT 35	JEFFRIES STRONGHOLD 63C														
	12-28-2015 JLJ/63C A-100% AR #3534263														
LJT CITADEL 812 TROTTERS STRONGHOLD 156 LJT PEARL 579 VGW OLY 903 JEFFRIES MS QUEEN A470 JEFFIES MS DIXIE Y947 MPPA:										Performance					
										BW		90			
										AWW		784			
										7/25 WT		1600			
										7/25 SC		40.0 cm			
										%IMF		4.17			
										REA		14.7			
	HBLD	GRID	CED	BW	WW	YW	MILK	ME	HPG	CEM	STAY	MB	YG	CW	REA
EPDs	114	50	2	0.6	71	113	17	1	7	9	12	0.48	0.08	38	0.26
Top%	34	36	82	86	10	9	85	58	96	5	24	40	78	7	25

• This guy will cast a shadow over a large portion of ground! One of the biggest bulls in the offering, expect him to really sire the pounds!



• If the new owner were so inclined and wanted to have a little fun, just throw a halter on this handsome dude and you might just have a National Champion on your hands!

LOT 36	JEFFRIES STRONGHOLD 104D														
	01-03-2016 JLJ/104D A-100% AR #3534173														
LJT CITADEL 812 TROTTERS STRONGHOLD 156 LJT PEARL 579 VGW OLY 903 JEFFRIES MS QUEEN A470 JEFFIES MS DIXIE Y947 MPPA:										Performance					
										BW			88		
										AWW			776		
										7/25 WT			1355		
										7/25 SC			35.0 cm		
										%IMF			4.10		
										REA			16.0		
	HBLD	GRID	CED	BW	WW	YW	MILK	ME	HPG	CEM	STAY	MB	YG	CW	REA
EPDs	115	51	2	0.6	71	113	17	1	7	9	12	0.46	-0.05	38	0.40
Top%	32	27	82	86	10	9	85	58	96	5	24	43	24	7	12



JEFFRIES RED ANGUS - AGE ADVANTAGED 18 MONTH OLD BULLS



Lots 37 & 38... if the direction you want to go is... up, up and away!

**Lot 37...
weighed in
on 7/25 at
1600 lbs!**



• *This is one massive dude, and his weight is not from fat! His data doesn't truly reflect his growth potential because he is an ET and didn't have weaning or yearling ratios, but don't let that fool you!*

LOT		JEFFRIES NEW DIRECTION 106D													
37		01-03-2016 JLJ/106D A-100% AR #3534175													
ANDRAS IN FOCUS B152 ANDRAS NEW DIRECTION R240 ANDRAS KURUBA B111 GLACIER CHATEAU 744 MS CHATEAU ADVANCE 4L 406P 4L MS ADVANCER R26L MPPA: 104.7										Performance					
										BW			85		
										AWW			739		
										7/25 WT			1600		
										7/25 SC			37.0 cm		
										%IMF			3.95		
										REA			14.4		
HB	GRD	CED	BW	WW	YW	MILK	ME	HPG	CEM	STAY	MB	YG	CW	REA	
EPDs	50	49	2	-0.6	61	101	26	7	11	7	4	0.27	0.09	30	0.11
Top%	93	56	82	67	40	27	15	97	64	17	94	83	81	24	53



• *Wow what a lot of bull! Lot 38 has an amazing record with a 112 WR, 113 YR and 106 REA ratio all with only a 77 BW!*
 • *His dam sold to Linthicum's last fall, but not before producing a herdbull in '15 that sold Arrowsmith Red Angus in NE.*

LOT		JEFFRIES NEW DIRECTION 120D													
38		01-06-2016		JLJ/120D		A-100% AR		#3534183							
ANDRAS IN FOCUS B152 ANDRAS NEW DIRECTION R240 ANDRAS KURUBA B111 BASIN ENERGIZER 20R5 BASIN SAM 8948 BASIN SAM J430 MPPA: 100.0										Performance					
										BW		77			
										AWW		815			
										7/25 WT		1525			
										7/25 SC		42.0 cm			
										%IMF		4.16			
										REA		14.6			
	HBLD	GRID	CED	BW	WW	YW	MILK	ME	HPG	CEM	STAY	MB	YG	CW	REA
EPDs	61	51	5	-1.9	65	109	22	-1	11	6	4	0.49	0.17	33	-0.01
Top%	90	23	51	43	25	14	44	39	55	29	95	38	96	16	77



JEFFRIES RED ANGUS - AGE ADVANTAGED 18 MONTH OLD BULLS

Lots 39 & 40... full ET brothers by New Direction x Abigrace 257Z!



- This dark red stud is massive yet he is extremely clean made and attractive! His 16.6in REA is one of the largest in the offering!
- His dam, 257Z, is one of our favorite donors in the herd. Her Rollin Deep daughter was the one shown by Jerry's granddaughter, Marcela, this year at the OYE and NAJRAE shows.

LOT 39	JEFFRIES NEW DIRECTION 38C														
	12-25-2015 JLJ/38C A-100% AR #3534254														
ANDRAS IN FOCUS B152 ANDRAS NEW DIRECTION R240 ANDRAS KURUBA B111 TR COLT 45 UT806 C-BAR ABIGRACE 257Z C-BAR ABIGRACE U875 MPPA: 105.4										Performance					
										BW		89			
										AWW		772			
										7/25 WT		1440			
										7/25 SC		39.0 cm			
										%IMF		3.60			
										REA		16.6			
	HBLD	GRID	CED	BW	WW	YW	MILK	ME	HPG	CEM	STAY	MB	YG	CW	REA
EPDs	70	51	5	-2.0	63	105	24	-4	13	7	5	0.39	0.04	30	0.24
Top%	84	24	57	41	35	20	23	19	22	18	94	58	65	23	29



Lot 28's dam, 257Z, pictured as a yearling when we purchased her from C-Bar Ranch



- This bull is really dense! Lot 40 is a full ET littermate to Lot 39.
- Their dam was purchased from C-Bar in '14 and had an Eldorado daughter that is now also in our ET program.

LOT 40	JEFFRIES NEW DIRECTION 96D															
	01-01-2016 JLJ/96D A-100% AR #3534280															
ANDRAS IN FOCUS B152 ANDRAS NEW DIRECTION R240 ANDRAS KURUBA B111 TR COLT 45 UT806 C-BAR ABIGRACE 257Z C-BAR ABIGRACE U875 MPPA: 105.4										Performance						
										BW		85				
										AWW		706				
										7/25 WT		1360				
										7/25 SC		38.0 cm				
										%IMF		4.43				
										REA		13.8				
	HBLD	GRID	CED	BW	WW	YW	MILK	ME	HPG	CEM	STAY	MB	YG	CW	REA	
EPDs	70	51	5	-2.0	63	105	24	-4	13	7	5	0.56	0.18	30	-0.07	
Top%	84	23	57	41	35	20	23	19	22	18	94	26	97	23	86	



JEFFRIES RED ANGUS - AGE ADVANTAGED 18 MONTH OLD BULLS



Lots 41-43... a trio of New Direction sons that are definitely headed the right way!

LOT		JEFFRIES NEW DIRECTION 79C													
41		12-29-2015 JLJ/79C A-100% AR #3534272													
ANDRAS IN FOCUS B152 ANDRAS NEW DIRECTION R240 ANDRAS KURUBA B111 HXC CONQUEST 4405P JEFFRIES MS KAY A441 JEFFRIES MS KAY Z03 MPPA: 100.0										Performance					
										BW			79		
										AWW			683		
										7/25 WT			1445		
										7/25 SC			40.5 cm		
										%IMF			4.18		
										REA			14.8		
HBLD		GRID	CED	BW	WW	YW	MILK	ME	HPG	CEM	STAY	MB	YG	CW	REA
EPDs	82	51	5	-2.4	64	109	26	-4	12	5	7	0.47	0.19	32	0.18
Top%	74	22	58	34	30	14	16	18	49	37	87	42	97	19	39



• A very smooth made New Direction son out of a first calf Conquest daughter, Lot 41 posted a 100 WR and 104 YR with a 108 REA ratio.



LOT		JEFFRIES NEW DIRECTION 105D													
42		01-03-2016 JLJ/105D A-100% AR #3534174													
ANDRAS IN FOCUS B152 ANDRAS NEW DIRECTION R240 ANDRAS KURUBA B111 HXC CONQUEST 4405P JEFFRIES MS LADY B514 JEFFRIES MS LADY Z162 MPPA: 100.6										Performance					
										BW		78			
										AWW		696			
										7/25 WT		1345			
										7/25 SC		37.0 cm			
										%IMF		4.45			
										REA		14.7			
HBLD		GRID	CED	BW	WW	YW	MILK	ME	HPG	CEM	STAY	MB	YG	CW	REA
EPDs	69	50	5	-1.1	65	108	25	-3	12	5	5	0.41	0.12	33	0.05
Top%	85	33	52	58	27	16	19	21	47	47	92	54	90	16	65

• Another New Direction x Conquest, Lot 42 has a flawless record of: 101 WR, 105 YR, 106 IMF ratio and 107 REA ratio!

LOT 43	JEFFRIES NEW DIRECTION 169D														
	01-19-2016 JLJ/169D A-100% AR #3534214														
ANDRAS IN FOCUS B152 ANDRAS NEW DIRECTION R240 ANDRAS KURUBA B111 BASIN EXT 8926 JEFFRIES MS KAY X712 JEFFRIES N319-U531 MPPA: 103.4									Performance						
									BW			76			
									AWW			626			
									7/25 WT			1265			
									7/25 SC			36.0 cm			
									%IMF			3.62			
									REA			14.9			
	HBLD	GRID	CED	BW	WW	YW	MILK	ME	HPG	CEM	STAY	MB	YG	CW	REA
EPDs	82	51	6	-2.4	62	104	24	-1	12	6	6	0.47	0.12	28	0.15
Top%	73	25	43	34	35	22	23	35	36	23	89	42	89	27	45



• Phenomenal shape to this 76 BW, -2.4 BW EPD heifer bull! His dam has five replacement daughters in the herd!

JEFFRIES RED ANGUS - AGE ADVANTAGED 18 MONTH OLD BULLS
Lots 44 & 45... Oly sons with a little more Ole!



- He posted an unreal 920 AWW with a 123 WR!
- His dam, Flower 1062T, is our top producing cow with a 111.5 MPPA!

Lot 44..
the #1 weaning
bull in the offering
with a 920 AWW!

LOT		JEFFRIES OLY 245D													
44		02-07-2016 JLJ/245D A-100% AR #3615387													
RED SSS OLY 554T VGW OLY 903 VGW TM-DORA 0758 RED SIX MILE MATADOR 817M RED KBJ FLOWER 1062T RED WSS FLOWER 0423 MPPA: 111.5										Performance					
										BW			84		
										AWW			920		
										7/25 WT			1590		
										7/25 SC			42.5 cm		
%IMF			3.85												
REA			14.3												
HBLD	GRID	CED	BW	WW	YW	MILK	ME	HPG	CEM	STAY	MB	YG	CW	REA	
EPDs	84	50	1	-0.7	71	119	22	-2	11	6	8	0.27	0.06	40	0.10
Top%	71	28	90	65	10	5	43	32	62	25	79	83	72	5	54



- A powerful, long made bull with loads of growth!
- His dam is 12 years old this year and his sire is 8 years old, and both are still producing!

Lot 45...
bred for
longevity...
and he is long too!

LOT		JEFFRIES OLY 239D													
45		02-04-2016 JLJ/239D A-100% AR #3615383													
RED SSS OLY 554T										Performance					
VGW OLY 903										BW			93		
VGW TM-DORA 0758										AWW			616		
PERKS ADVANCER 9088										7/25 WT			1350		
MS ADVANCER OF 4L 69R										7/25 SC			39.0 cm		
4L MS MAKE MY DAY R903										%IMF			3.84		
MPPA: 104.3										REA			13.7		
	HBLD	GRID	CED	BW	WW	YW	MILK	ME	HPG	CEM	STAY	MB	YG	CW	REA
EPDs	59	50	-4	1.1	61	113	22	10	8	5	8	0.30	0.13	40	-0.06
Top%	90	37	99	91	40	9	40	99	96	40	81	78	91	5	85

JEFFRIES RED ANGUS - AGE ADVANTAGED 18 MONTH OLD BULLS
Lots 46 & 47... we like to refer to them as the 'Oly' kind!

**Lot 46..
the best
average bull
in the sale!**



LOT 46		JEFFRIES OLY 50C													
		12-26-2015 JLJ/50C A-100% AR #3534258													
RED SSS OLY 554T VGW OLY 903 VGW TM-DORA 0758 JEFFRIES PURSUIT 33Z JEFFRIES MS SUSIE B598 JEFFREIS MS SUSIE X677 MPPA: 100.0										Performance					
										BW			65		
										AWW			645		
										7/25 WT			1270		
										7/25 SC			37.5 cm		
										%IMF			4.02		
										REA			13.6		
	HBLD	GRID	CED	BW	WW	YW	MILK	ME	HPG	CEM	STAY	MB	YG	CW	REA
EPDs	104	52	3	-3.9	58	101	21	4	8	8	10	0.41	0.03	25	0.18
Top%	46	13	74	14	54	26	54	79	92	8	54	54	59	37	39

- Lot 46 might just have average figures, but he is far from average!
- His dam, Ms Susie B598, is a first calf heifer and maternal sister to Lots 1 & 2.



LOT 47		JEFFRIES OLY 307D													
		03-02-2016 JLJ/307D A-100% AR #3615445													
RED SSS OLY 554T VGW OLY 903 VGW TM-DORA 0758 PERKS ADVANCER 9088 MS SUPER VISION OF 4L 135R 4L MS MAKE MY DAY R999 MPPA: 100.9										Performance					
										BW			80		
										AWW			631		
										7/25 WT			1330		
										7/25 SC			37.0 cm		
										%IMF			4.21		
										REA			14.2		
	HBLD	GRID	CED	BW	WW	YW	MILK	ME	HPG	CEM	STAY	MB	YG	CW	REA
EPDs	76	51	0	-2.1	57	105	22	11	7	6	8	0.34	0.07	30	0.03
Top%	79	21	92	39	55	20	42	99	97	33	74	70	76	22	69

- Lot 47 is the bull pictured on the back cover of the catalog! He is one of the youngest bulls in the offering and one of the best.
- His dam, 135R, is a foundation VonForell cow that has always had good ones!

JEFFRIES RED ANGUS - AGE ADVANTAGED 18 MONTH OLD BULLS

Lots 48 & 49... grandsons of VGW Oly 903!



LOT		JEFFRIES 526B 267D													
48		02-11-2016 JLJ/267D A-100% AR #3534243													
VGW OLY 903 JEFFRIES 903-526B BASIN DUCHESS 8120 BIEBER ROLLIN DEEP Y118 JEFFRIES MS NAMO A503 BASIN DYNAMO 8359 MPPA: 99.3										Performance					
										BW		72			
										AWW		677			
										7/25 WT		1255			
										7/25 SC		38.0 cm			
										%IMF		4.17			
										REA		13.4			
	HBLD	GRID	CED	BW	WW	YW	MILK	ME	HPG	CEM	STAY	MB	YG	CW	REA
EPDs	103	51	3	-0.9	62	105	24	3	14	6	9	0.62	0.14	32	0.17
Top%	48	22	76	61	37	20	29	77	16	23	59	19	93	19	40

• As we get into the middle of these bulls we find studs like Lot 48! He could have just as easily started this sale.

• His dam, Ms Namo A503, is the exciting young donor by Rollin Deep and out our most powerful donor, Dynamo 8359.

**Lot 49...
posted a
104 WR &
108 YR!**



• A very smooth and attractive Oly grandson, Lot 49 was one of the top performers out of our heifers.

• His sire, 526B, sold in '15 to Mike Kats in KS.

LOT		JEFFRIES 526B 261D													
49		02-10-2016 JLJ/261D A-100% AR #3534242													
VGW OLY 903 JEFFRIES 903-526B BASIN DUCHESS 8120 HXC CONQUEST 4405P JEFFRIES MS KARINA A511 JEFFRIES MS KARINA Z48 MPPA: 102.3										Performance					
										BW		78			
										AWW		714			
										7/25 WT		1315			
										7/25 SC		34.0 cm			
										%IMF		4.11			
										REA		13.2			
	HBLD	GRID	CED	BW	WW	YW	MILK	ME	HPG	CEM	STAY	MB	YG	CW	REA
EPDs	87	51	3	-0.5	66	113	19	3	11	4	8	0.50	0.20	37	0.01
Top%	68	26	75	70	23	9	70	76	53	54	74	35	98	8	74



JEFFRIES RED ANGUS - AGE ADVANTAGED 18 MONTH OLD BULLS



Lots 50 & 51... top performing sons of Bieber Spartacus A193!

Lot 50...
for those that
fancy performance
& muscle!



LOT 50		JEFFRIES SPARTACUS 193D													
		01-27-2016 JLJ/193D A-100% AR #3534225													
BIEBER ROUSE SAMURAI X22 BIEBER SPARTACUS A193 BIEBER TILLY 233U BASIN EXT 8926 JEFFIES MS DIXIE Y947 MS ADVANCER OF 4L RM37 MPPA: 100.0										Performance					
										BW AWW 7/25 WT 7/25 SC %IMF REA		87 736 1385 38.5 cm 4.10 14.8			
	HBLD	GRID	CED	BW	WW	YW	MILK	ME	HPG	CEM	STAY	MB	YG	CW	REA
EPDs	99	50	2	0.2	73	115	16	12	14	1	11	0.51	0.13	38	0.11
Top%	52	34	84	80	8	8	88	99	12	95	35	34	91	7	52

- Lot 50 held his own on test, posting a 101 WR and 104 YR with a 107 REA ratio.
- His dam, Ms Dixie Y947, has produced three top sons, including a herdbull in '15 that sold to R&G Cattle in Heavner, OK.



Lot 51...
ranks in the top
16% for BW and
the top 9% for MB!

- Lot 51 is one of the premier heifer bulls in the offering, posting a 71 BW and a -3.7 BW EPD.
- A maternal brother sold in '13 to Heath Bundy in Idabel, OK.

LOT		JEFFRIES SPARTACUS 154D													
51		01-13-2016 JLJ/154D A-100% AR #3534205													
BIEBER ROUSE SAMURAI X22 BIEBER SPARTACUS A193 BIEBER TILLY 233U LSF JBOB EXPECTATION 6034S JEFFREIS MS SUSIE X677 BIEBER SUSIE 264U MPPA: 97.6										Performance					
										BW		71			
										AWW		684			
										7/25 WT		1250			
										7/25 SC		36.0 cm			
										%IMF		3.38			
										REA		14.6			
	HBLD	GRID	CED	BW	WW	YW	MILK	ME	HPG	CEM	STAY	MB	YG	CW	REA
EPDs	123	51	6	-3.7	60	89	22	9	14	5	12	0.76	0.14	17	0.10
Top%	24	25	47	16	43	52	40	99	17	42	24	9	93	63	54

JEFFRIES RED ANGUS - AGE ADVANTAGED 18 MONTH OLD BULLS

Lots 52 & 53... a pair of bulls that look good coming and going!

**Lot 52...
the
front
'Cover Boy'!**



• Here we are at Lot 52, and we're finally selling the bull that is featured on the front cover! Where else are you going to find a -4.8 BW heifer bull with this kind of shape and look?

LOT 52		JEFFRIES SPARTACUS 238D													
		02-04-2016 JLJ/238D A-100% AR #3615381													
BIEBER ROUSE SAMURAI X22 BIEBER SPARTACUS A193 BIEBER TILLY 233U SIX MILE ITEGRITY 691W JEFFRIES MS TPIE Y821 JEFFRIES W537 MPPA: 88.0										Performance					
										BW AWW 7/25 WT 7/25 SC %IMF REA		70 656 1320 36.0 cm 4.31 13.2			
	HBLD	GRID	CED	BW	WW	YW	MILK	ME	HPG	CEM	STAY	MB	YG	CW	REA
EPDs	117	50	8	-4.8	57	87	17	3	13	4	11	0.53	0.11	15	-0.03
Top%	31	30	28	7	55	56	82	77	33	54	39	31	88	70	81



• Lot 53 is another one of the younger bulls in the offering but he can handle the competition!
• His dam, Ms Gloria Y934, is a total outcross Canadian bred female that has done well at Jeffries, producing a herdbull in '15, Jeffries Deep End 498A, that sold to Pritchard Red Angus in Mountain View, OK.

LOT 53		JEFFRIES SPARTACUS 304D													
		02-29-2016 JLJ/304D A-100% AR #3615443													
BIEBER ROUSE SAMURAI X22 BIEBER SPARTACUS A193 BIEBER TILLY 233U RED 6 MILE FULL THROTTLE171T JEFFRIES MS GLORIA Y934 SIX MILE GLORIA 125T MPPA: 95.3										MPerformance					
										BW		82			
										AWW		674			
										7/25 WT		1240			
										7/25 SC		36.0 cm			
										%IMF		3.60			
										REA		13.1			
	HBLD	GRID	CED	BW	WW	YW	MILK	ME	HPG	CEM	STAY	MB	YG	CW	REA
EPDs	98	49	3	-1.8	60	89	16	4	14	3	10	0.53	0.13	20	-0.09
Top%	54	58	78	45	44	53	88	78	19	76	44	31	91	55	89



JEFFRIES RED ANGUS - AGE ADVANTAGED 18 MONTH OLD BULLS



Lots 54-56... Smart Choice sons with a little extra gas in the tank!



LOT		JEFFRIES SMART CHOICE 75C													
54		12-29-2015 JLJ/75C A-100% AR #3534269													
ANDRAS MR BLACK JEANS R179 ANDRAS JLJ SMART CHOICE R264 ANDRAS KURUBA R194 BIEBER ROLLIN DEEP Y118 JEFFRIES MS NAMO A503 BASIN DYNAMO 8359 MPPA: 99.3										Performance					
										BW				90	
										AWW				734	
										7/25 WT				1550	
										7/25 SC				41.0 cm	
										%IMF		4.01			
										REA		14.2			
	HBLD	GRID	CED	BW	WW	YW	MILK	ME	HPG	CEM	STAY	MB	YG	CW	REA
EPDs	95	52	6	-2.0	66	110	27	-1	15	5	7	0.59	0.07	33	0.23
Top%	57	13	41	41	23	13	9	34	11	37	84	23	74	17	31

• Lot 54 is one of the top bulls in this entire offering. He is an ET son out of one the top young cows in the herd, Ms Nammo A503, a powerful Rollin Deep x Mulberry bred dam.

LOT 55	JEFFRIES SMART CHOICE 135D																		
	01-08-2016 JLJ/135D A-100% AR #3534193																		
ANDRAS MR BLACK JEANS R179 ANDRAS JLJ SMART CHOICE R264 ANDRAS KURUBA R194 LSF RR DESERT DUDE 7807T BSRA LANA 927 HCFA LANA JR 242 MPPA: 96.7										Performance									
										BW					85				
										AWW					709				
										7/25 WT					1370				
										7/25 SC					41.0 cm				
										%IMF					3.79				
										REA					15.0				
HBLD	GRID	CED	BW	WW	YW	MILK	ME	HPG	CEM	STAY	MB	YG	CW	REA					
EPDs	80	50	8	-1.9	63	100	21	2	10	6	6	0.39	-0.07	27	0.17				
Top%	76	28	31	43	33	29	49	63	70	33	89	58	18	33	41				



• Check out the shorts on this muscle bound dude! Another top ET Smart Choice son out of Lana 927, the young female we purchased from Blue Stone Red Angus in WI. Her natural born Conquest son sells as Lot 63.



LOT 56		JEFFRIES SMART CHOICE 250D													
		02-08-2016 JLJ/250D A-100% AR #3615393													
ANDRAS MR BLACK JEANS R179 ANDRAS JLJ SMART CHOICE R264 ANDRAS KURUBA R194 BIEBER H HUGHES W109 JEFFRIES MS Z114 BASIN CHINOOK 8459 MPPA: 108.7										Performance					
										BW		83			
										AWW		772			
										7/25 WT		1340			
										7/25 SC		39.0 cm			
										%IMF		3.69			
										REA		13.7			
	HBLD	GRID	CED	BW	WW	YW	MILK	ME	HPG	CEM	STAY	MB	YG	CW	REA
EPDs	112	49	6	-1.7	64	95	29	-1	13	8	10	0.53	0.11	24	0.10
Top%	35	49	42	47	29	39	5	36	21	12	51	31	88	42	54

• Huge 772 AWW on this extra long made stud! His young dam is one of our up and comers, producing a show heifer to Dakota Cantrell, and a herd bull to Ely Ranch in Stuart, OK.



JEFFRIES RED ANGUS - AGE ADVANTAGED 18 MONTH OLD BULLS

Lots 57-59... three bulls that are all 'smart choices'!

LOT 57	JEFFRIES SMART CHOICE 60C														
	12-28-2015 JLJ/60C A-100% AR #3534261														
ANDRAS MR BLACK JEANS R179 ANDRAS JLJ SMART CHOICE R264 ANDRAS KURUBA R194 SIX MILE WILD WEST 0913W JEFFRIES MS ROSETTE B615 RED KBJ LADY ROSETTE 1070U MPPA:										Performance					
										BW		77			
										AWW		646			
										7/25 WT		1385			
										7/25 SC		40.0 cm			
										%IMF		3.62			
										REA		13.5			
	HBLD	GRID	CED	BW	WW	YW	MILK	ME	HPG	CEM	STAY	MB	YG	CW	REA
EPDs	79	50	4	-1.1	61	94	23	-6	12	4	7	0.62	0.07	24	0.05
Top%	76	39	62	58	40	43	34	10	43	66	84	19	76	41	65

• Lot 57 leads off this set of three Smart Choice sons that are all loaded with performance and type. He is an attractive, smooth made bull with a 77 BW and a .62 MB EPD that ranks in the top 19% of the breed.

LOT 58	JEFFRIES SMART CHOICE 132D														
	01-07-2016 JLJ/132D A-100% AR #3534190														
ANDRAS MR BLACK JEANS R179 ANDRAS JLJ SMART CHOICE R264 ANDRAS KURUBA R194 SIX MILE WILD WEST 0913W JEFFRIES MS GOLD CUP A404 JEFFRIES LAKINA U474 MPPA: 96.0										Performance					
										BW AWW 7/25 WT 7/25 SC %IMF REA			78 689 1365 36.0 cm		
	HBLD	GRID	CED	BW	WW	YW	MILK	ME	HPG	CEM	STAY	MB	YG	CW	REA
EPDs	97	49	5	-1.7	59	93	26	-1	12	5	9	0.45	0.07	23	0.07
Top%	55	48	52	47	48	45	16	41	34	47	63	46	76	46	61



• A nice calving ease bull here with balanced numbers. Last year a maternal brother sold to Terry Hollie in Stigler, OK.

LOT 59	JEFFRIES SMART CHOICE 266D														
	02-11-2016 JLJ/266D A-100% AR #3615409														
ANDRAS MR BLACK JEANS R179 ANDRAS JLJ SMART CHOICE R264 ANDRAS KURUBA R194 BASIN EXT 8926 JEFFRIES MS PRIDE Z118 BASIN PRIDE 8025 MPPA: 99.3										Performance					
										BW		83			
										AWW		703			
										7/25 WT		1375			
										7/25 SC		40.0 cm			
										%IMF		4.08			
										REA		14.3			
	HBLD	GRID	CED	BW	WW	YW	MILK	ME	HPG	CEM	STAY	MB	YG	CW	REA
EPDs	92	51	6	-0.4	65	115	20	4	12	5	8	0.43	0.11	39	0.09
Top%	61	20	43	71	26	7	58	83	36	38	80	50	88	7	57



• This guy really put on the pounds while on test, posting a 110 YR with carcass indexes of 101 for IMF and 103 for REA.



JEFFRIES RED ANGUS - AGE ADVANTAGED 18 MONTH OLD BULLS



Lots 60 & 61... the kind that will make your neighbors jealous!

Lot 60...
loaded with
performance
& muscle!



LOT 60		JEFFRIES EXTEND 236D													
		02-04-2016 JLJ/236D A-100% AR #3615379													
BASIN EXT 5233 LSF RR EXTEND 2313Z LSF RAINDANCE P4063 U8229 RED FINE LINE MULBERRY 26P JEFFRIES W577 JEFFRIES PR PRIDE 1207-P314 MPPA: 100.0										Performance					
										BW		89			
										AWW		799			
										7/25 WT		1340			
										7/25 SC		38.0 cm			
										%IMF		3.94			
										REA		16.0			
	HBLD	GRID	CED	BW	WW	YW	MILK	ME	HPG	CEM	STAY	MB	YG	CW	REA
EPDs	127	49	1	0.7	80	124	19	8	13	10	13	0.14	0.04	44	0.14
Top%	21	56	88	87	2	3	68	98	24	3	16	93	63	3	46

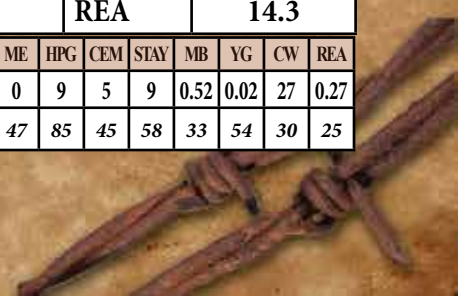
- Hold onto your hats... Lot 60 posted a 799 AWW with a 16.0 REA!
- His dam, W577, is one of several top producing Mulberry daughters in the herd. Her progeny include a son that sold in '12 to Pogue Bros. in Duncan, OK, and a daughter sold to Sydney Postle in CO back in '15.



Lot 61...
all his
ratios are
positive!

LOT 61		JEFFRIES CONQUEST 78C													
		12-29-2015 JLJ/78C A-100% AR #3534271													
BECKTON JULIAN GG B571 HXC CONQUEST 4405P HXC ELLIE MAY MA638 RED LONE STONE PURSUIT 81W JEFFRIES MS ROSE B565 BASIN ROSE 8612 MPPA: 104.0										Performance					
										BW			68		
										AWW			731		
										7/25 WT			1345		
										7/25 SC			39.0 cm		
%IMF			4.53												
REA			14.3												
HBLD	GRID	CED	BW	WW	YW	MILK	ME	HPG	CEM	STAY	MB	YG	CW	REA	
EPDs	107	51	9	-2.6	69	104	17	0	9	5	9	0.52	0.02	27	0.27
Top%	41	24	23	31	16	22	85	47	85	45	58	33	54	30	25

- Lot 61 is a bull with few holes, posting a positive yearling record across the board with indexes of: 97 BR, 107 WR, 103 YR, 108 IMF and 105 REA!
- His dam, Ms Rose B565, had this stud on her first try! She is a Pursuit daughter that stems from the famed Rose cow family at Basin Reds.



JEFFRIES RED ANGUS - AGE ADVANTAGED 18 MONTH OLD BULLS

Lots 62-64... sons of the old reliable, HXC Conquest 4405P!

LOT 62		JEFFRIES CONQUEST 72C													
		12-29-2015 JLJ/72C A-100% AR #3534267													
BECKTON JULIAN GG B571 HXC CONQUEST 4405P HXC ELLIE MAY MA638 RED LONE STONE PURSUIT 81W JEFFRIES MS JULY A276 MS ADVANCER OF 4L 105R MPPA: 104.6											Performance				
											BW		65		
											AWW		739		
											7/25 WT		1220		
											7/25 SC		36.0 cm		
											%IMF		4.47		
											REA		14.9		
	HBLD	GRID	CED	BW	WW	YW	MILK	ME	HPG	CEM	STAY	MB	YG	CW	REA
EPDs	101	49	9	-2.9	68	97	16	-4	8	4	9	0.38	0.04	23	0.09
Top%	49	50	21	26	17	35	90	18	93	67	59	61	63	45	57



• Heifer bull deluxe with a 65 BW, 739 AWW and 108 WR! He also had an awesome ultrasound scan with carcass indexes of 106 for IMF and 109 for REA!

LOT		JEFFRIES CONQUEST 137D													
63		01-08-2016 JLJ/137D A-100% AR #3534195													
BECKTON JULIAN GG B571 HXC CONQUEST 4405P HXC ELLIE MAY MA638 LSF RR DESERT DUDE 7807T BSRA LANA 927 HCFA LANA JR 242 MPPA: 96.7										Performance					
										BW		68			
										AWW		664			
										7/25 WT		1215			
										7/25 SC		36.5 cm			
										%IMF		4.38			
										REA		13.6			
	HBLD	GRID	CED	BW	WW	YW	MILK	ME	HPG	CEM	STAY	MB	YG	CW	REA
EPDs	110	50	11	-4.1	58	91	19	4	10	5	9	0.42	0.01	18	0.01
Top%	39	28	9	12	52	48	68	80	68	47	61	52	50	60	73



• Super calving ease bull with an 11 CED and -4.1 BW! This long and clean made Conquest son comes from the famed Lana cow family.

LOT		JEFFRIES CONQUEST 131D													
64		01-07-2016 JLJ/131D A-100% AR #3534189													
BECKTON JULIAN GG B571 HXC CONQUEST 4405P HXC ELLIE MAY MA638 VGW OLY 903 JEFFRIES MS MARTA A439 JEFFRIES MS MARTA Z111 MPPA: 96.8										Performance					
										BW		68			
										AWW		631			
										7/25 WT		1220			
										7/25 SC		38.0 cm			
										%IMF		4.23			
										REA		14.5			
	HBLD	GRID	CED	BW	WW	YW	MILK	ME	HPG	CEM	STAY	MB	YG	CW	REA
EPDs	128	51	8	-4.6	49	81	26	0	11	6	12	0.47	0.01	12	0.12
Top%	20	26	28	8	82	69	16	48	63	22	21	42	50	78	50



• Bred with calving ease and carcass in mind, this Conquest x Oly bred bull posted a 101 IMF ratio and a 106 REA ratio!



JEFFRIES RED ANGUS - AGE ADVANTAGED 18 MONTH OLD BULLS



Lots 65-67... our most advanced genetics out of first calf heifers!



LOT	JEFFRIES CONQUEST 256D														
65	02-10-2016 JLJ/256D A-100% AR #3534241														
HXC CONQUEST 4405P JEFFRIES CONQUEST 449A JEFFRIES MS DUCHES Z94 JEFFRIES SAKIC 27Z JEFFRIES MS SELMA B665 SELMA SUE OF SIX MILE 154Y MPPA: 99.4										Performance					
										BW	82				
										AWW	680				
										7/25 WT	1320				
										7/25 SC	37.0 cm				
										%IMF	4.09				
										REA	13.6				
	HBLD	GRID	CED	BW	WW	YW	MILK	ME	HPG	CEM	STAY	MB	YG	CW	REA
EPDs	102	49	6	-1.1	59	96	18	-1	11	5	10	0.39	0.15	26	0.08
Top%	49	55	41	57	48	37	73	38	52	43	53	58	94	35	58

• Lot 65 leads off a set of 1/2 brothers by Jeffries Conquest 449A, a top carcass Conquest son that we kept back from the '14 crop to clean up our heifers.

LOT	JEFFRIES CONQUEST 208D														
66	01-30-2016 JLJ/208D A-100% AR #3534231														
HXC CONQUEST 4405P JEFFRIES CONQUEST 449A JEFFRIES MS DUCHES Z94 VGW OLY 903 JEFFRIES MS MONO A480 JEFFRIES MS MONU Z89 MPPA: 99.4										Performance					
										BW	71				
										AWW	678				
										7/25 WT	1280				
										7/25 SC	35.0 cm				
										%IMF	3.82				
										REA	13.8				
	HBLD	GRID	CED	BW	WW	YW	MILK	ME	HPG	CEM	STAY	MB	YG	CW	REA
EPDs	95	49	5	-2.6	46	82	22	0	11	4	10	0.37	0.15	16	-0.02
Top%	57	56	54	32	87	68	41	47	61	63	52	65	94	68	80



• Sleep easy at night during calving season with this 71 BW, -2.6 BW EPD bull. He stacks two of our favorites... Conquest and Oly 903.



LOT	JEFFRIES CONQUEST 296D														
67	02-23-2016 JLJ/296D A-100% AR #3534246														
HXC CONQUEST 4405P JEFFRIES CONQUEST 449A JEFFRIES MS DUCHES Z94 VGW OLY 903 JEFFRIES MS NOLINAGE B525 JEFFRIES MS NOLINAGE Z149 MPPA: 100.8										Performance					
										BW	77				
										AWW	703				
										7/25 WT	1200				
										7/25 SC	35.0 cm				
										%IMF	4.45				
										REA	12.6				
	HBLD	GRID	CED	BW	WW	YW	MILK	ME	HPG	CEM	STAY	MB	YG	CW	REA
EPDs	94	50	2	0.0	60	95	20	2	12	5	10	0.69	0.16	26	0.09
Top%	59	44	80	77	45	40	59	68	35	50	55	13	96	33	58

• Lot 67 is a 3/4 brother to Lot 66, stacking Conquest and Oly 903. He posted an impressive 703 AWW with only a 77 BW, and he also had a 106 IMF ratio!



Lots 68 & 69... bring down the 'Thunder' with this pair of 3/4 brothers!



Lot 68...
boasts ultrasound
ratios of 112 IMF
& 116 REA!

- Lot 68 did everything right, posting a record of: 94 BR, 100 WR, 106 YR, 112 IMF and 116 REA!
- His dam, Ms Right A408, is a beautiful Right Kind daughter out of Abigrace S602, also the dam of the popular Accelerated Genetics sire, C-Bar Contour. Last year her son sold to the Bolin's in Strang, OK.

LOT 68	JEFFRIES THUNDER 204D														
	01-29-2016 JLJ/204D A-100% AR #3534229														
ANDRAS THUNDER R196 ANDRAS THUNDER A092 MLK CRK LAKINA 502 BUF CRK THE RIGHT KIND U199 JEFFRIES MS RIGHT A408 BROWN C- ABIGRACE S602 MPPA: 102.7										Performance					
										BW		70			
										AWW		683			
										7/25 WT		1315			
										7/25 SC		40.0 cm			
										%IMF		4.71			
										REA		15.8			
	HBLD	GRID	CED	BW	WW	YW	MILK	ME	HPG	CEM	STAY	MB	YG	CW	REA
EPDs	104	51	7	-2.3	68	108	25	-1	12	4	9	0.58	0.06	31	0.19
Top%	46	17	32	36	17	16	19	36	45	64	66	24	72	21	37



Lot 69...
started at 77 BW
and finished with
a 799 AWW!

- Lot 69 is one of the big spread bulls from BW to YW, and his 799 AWW is one of the best in the offering!
- His dam, Ms Right A145, is a full sister in blood to Lot 68's dam, sired by The Right Kind and out of Abigrace.

LOT 69	JEFFRIES THUNDER 265D														
	02-11-2016 JLJ/265D A-100% AR #3615407														
ANDRAS THUNDER R196 ANDRAS THUNDER A092 MLK CRK LAKINA 502 BUF CRK THE RIGHT KIND U199 JEFFRIES MS RIGHT A145 C-BAR ABIGRACE W9100 MPPA: 103.3										Performance					
										BW		77			
										AWW		799			
										7/25 WT		1285			
										7/25 SC		38.5 cm			
										%IMF		4.17			
										REA		12.6			
	HBLD	GRID	CED	BW	WW	YW	MILK	ME	HPG	CEM	STAY	MB	YG	CW	REA
EPDs	101	51	6	-1.3	76	115	24	-1	12	3	9	0.53	0.07	36	0.19
Top%	49	25	46	54	4	8	26	38	40	73	62	31	76	10	37



JEFFRIES RED ANGUS - AGE ADVANTAGED 18 MONTH OLD BULLS



Lots 70 & 71... a pair of powerhouses that will sire the pounds!

**Lot 70...
posted a
792 AWW with
only a 75 BW!**



LOT 70	JEFFRIES PISTOLERO 182D														
	01-23-2016 JLJ/182D A-100% AR #3534219														
TR COLT 45 UT806 JEFFRIES PISTOLERO 255Z LGS ABBY 689S GMRA MAKE IT EASY 8226 JEFFRIES MS MINOLA X743 BIEBER MINOLA 206U MPPA: 102.3										Performance					
										BW			75		
										AWW			792		
										7/25 WT			1420		
										7/25 SC			39.0 cm		
										%IMF			4.70		
										REA			13.0		
	HBLD	GRID	CED	BW	WW	YW	MILK	ME	HPG	CEM	STAY	MB	YG	CW	REA
EPDs	92	50	6	-2.4	63	99	24	5	10	4	9	0.46	0.03	25	-0.15
Top%	61	31	46	34	33	32	24	90	76	55	68	43	61	38	95

• Here is one of the top performers in the offering, with a record of: 95 BR, 109 WR, 110 YR and 111 IMF ratio!

• His sire, Pistolero 255Z, was one of our top bulls in '14, going to Mike Kats in KS. He is a full brother to the popular ABS sire, C-Bar Evolution.

**Lot 71...
posted a
797 AWW with
only a 77 BW!**



• This powerhouse pushed it to the outer limits with an amazing 797 AWW, and he started out with only a 77 BW!

• His dam, Chico X0294, is an awesome Berry Cherry daughter that has earned a 108.5 MPPA. She produced a \$7,500 show heifer in '15 to Abigail Hambrick in Cameron, OK.

LOT 71	JEFFRIES OUTER LIMIT 192D														
	01-27-2016 JLJ/192D A-100% AR #3534224														
WHITE OAKS COPPER 873 ANDRAS OUTER LIMIT A032 ANDRAS ROSE 9027 TJS BERRY CHERRY 8801 TJS CHICO X0294 LCC CHICA LA195 MPPA: 108.5										Performance					
										BW		77			
										AWW		797			
										7/25 WT		1265			
										7/25 SC		36.0 cm			
										%IMF		4.40			
										REA		12.9			
	HBLD	GRID	CED	BW	WW	YW	MILK	ME	HPG	CEM	STAY	MB	YG	CW	REA
EPDs	91	49	3	-0.4	63	96	34	4	11	6	9	0.50	0.12	26	0.16
Top%	63	59	75	71	32	37	1	80	56	22	60	36	90	33	42

JEFFRIES RED ANGUS - AGE ADVANTAGED 18 MONTH OLD BULLS

Lots 72 & 73... a pair of big REA brothers out of Persuasion!

**Lot 72...
showing off
his
15in. REA!**



LOT 72	JEFFRIES NEW DIRECTION 152D															
	01-11-2016 JLJ/152D II-100% AR(Scurs) #3534204															
ANDRAS IN FOCUS B152 ANDRAS NEW DIRECTION R240 ANDRAS KURUBA B111 BFCK CHEROKEE CNYN 4912 MEADO-WEST PERSUASION DFRA AL THEA 107 MPPA: 103.0									Performance							
									BW			85				
									AWW			735				
									7/25 WT			1355				
									7/25 SC			38.0 cm				
									%IMF			4.10				
									REA			15.0				
	HBLD	GRID	CED	BW	WW	YW	MILK	ME	HPG	CEM	STAY	MB	YG	CW	REA	
EPDs	56	51	5	-2.9	63	101	26	-2	10	0	5	0.52	0.03	26	0.22	
Top%	92	19	57	26	32	26	16	32	76	96	93	33	57	34	32	

• Loads of power and performance in this big REA son of New Direction out of Meado-West Persuasion.

• Note that this bull has been changed to Category II. When we clipped the bulls heads a month ago he had just a tiny little scur.

**Lot 73...
showing off
his
15.2in. REA!**



LOT 73	JEFFRIES NEW DIRECTION 142D														
	01-09-2016 JLJ/142D A-100% AR #3534199														
ANDRAS IN FOCUS B152 ANDRAS NEW DIRECTION R240 ANDRAS KURUBA B111 BFCK CHEROKEE CNYN 4912 MEADO-WEST PERSUASION DFRA AL THEA 107 MPPA: 103.0										Performance					
										BW		71			
										AWW		721			
										7/25 WT		1250			
										7/25 SC		39.5 cm			
										%IMF		4.03			
										REA		15.2			
	HBLD	GRID	CED	BW	WW	YW	MILK	ME	HPG	CEM	STAY	MB	YG	CW	REA
EPDs	56	51	5	-2.9	63	101	26	-2	10	0	5	0.50	0.00	26	0.24
Top%	91	18	57	26	32	26	16	32	76	96	93	35	47	34	29

• Lot 73 is a full ET brother to Lot 72, and he sports even a larger REA of 15.2 in!

• The dam, Persuasion, was one of Cassie Johnson's first show heifers, but she went on to produce such herdsires as the popular Wide Load bull at the Mann Ranch in KS.



JEFFRIES RED ANGUS - AGE ADVANTAGED 18 MONTH OLD BULLS

Lots 74 & 75... the last of the New Direction sons!

LOT 74	JEFFRIES NEW DIRECTION 167D													
	01-18-2016 JLJ/167D A-100% AR #3534213													
ANDRAS IN FOCUS B152 ANDRAS NEW DIRECTION R240 ANDRAS KURUBA B111 RED TOWAW INDEED 104H SIX MILE BERY 257T RED CUMNOCK BERY 765X MPPA: 94.1										Performance				
										BW	85			
										AWW	679			
										7/25 WT	1260			
										7/25 SC	41.5 cm			
										%IMF	3.63			
										REA	12.3			
HBLD	GRID	CED	BW	WW	YW	MILK	ME	HPG	CEM	STAY	MB	YG	CW	REA
EPDs	67	48	1	-1.4	44	72	21	-6	10	4	7	0.39	0.07	-0.08
Top%	86	76	86	52	90	83	53	10	72	56	83	59	76	88



• An attractive bull here... he is out of a 10 year old daughter of perpetual Canadian maternal leader, Towaw Indeed 104H. A maternal brother sold to Summit Farms in IA, back in our '13 sale.



LOT 75	JEFFRIES NEW DIRECTION 144D													
	01-10-2016 JLJ/144D A-100% AR #3534200													
ANDRAS IN FOCUS B152 ANDRAS NEW DIRECTION R240 ANDRAS KURUBA B111 JEFFRIES SAKIC 27Z JEFFRIES MS KATY B634 JEFFRIES MS KATY X658 MPPA: 98.9										Performance				
										BW	68			
										AWW	676			
										7/25 WT	1240			
										7/25 SC	37.5 cm			
										%IMF	4.20			
										REA	11.7			
HBLD	GRID	CED	BW	WW	YW	MILK	ME	HPG	CEM	STAY	MB	YG	CW	REA
EPDs	72	50	5	-1.9	64	103	24	0	11	7	5	0.48	0.18	-0.02
Top%	83	36	54	43	30	23	28	46	64	13	91	40	97	79

• Nice BW to YW spread on this New Direction son. His dam is a first calf Sakic 27Z daughter out of our top donor, Ms Katy X658, who has a group of her own ET sons selling this year as Lots 18-21.

Developing bulls at Jeffries Red Angus...



... requires plenty of grass...



...and the water has more than one purpose too!

JEFFRIES RED ANGUS - AGE ADVANTAGED 18 MONTH OLD BULLS

Lots 76-78... make the right choice with these Smart Choice sons!

LOT	JEFFRIES SMART CHOICE 231D														
76	02-03-2016 JLJ/231D A-100% AR #3615375														
ANDRAS MR BLACK JEANS R179 ANDRAS JLJ SMART CHOICE R264 ANDRAS KURUBA R194 A-1 HAY MAKER 511V JEFFRIES MS LADY Z162 RED KBJ LADY BIRD 896T MPPA: 104.6										Performance					
										BW	71				
										AWW	738				
										7/25 WT	1370				
										7/25 SC	37.0 cm				
										%IMF	4.15				
										REA	12.2				
	HBLD	GRID	CED	BW	WW	YW	MILK	ME	HPG	CEM	STAY	MB	YG	CW	REA
EPDs	89	51	8	-1.5	59	96	26	-1	12	3	8	0.64	0.01	25	0.18
Top%	65	22	28	50	49	38	12	34	46	73	81	17	50	38	39



• Top performing bull with a 103 WR, 107 YR, and only a 71 BW! He has a maternal sister by Conquest that is back in the herd and raised the powerful New Direction son selling as Lot 42.



LOT	JEFFRIES SMART CHOICE 150D														
77	01-11-2016 JLJ/150D A-100% AR #3534203														
ANDRAS MR BLACK JEANS R179 ANDRAS JLJ SMART CHOICE R264 ANDRAS KURUBA R194 BIEBER H HUGHES W109 JEFFRIES MS SUSIE A293 JEFFREIS MS SUSIE X677 MPPA: 104.0										Performance					
										BW	71				
										AWW	768				
										7/25 WT	1270				
										7/25 SC	35.0 cm				
										%IMF	4.16				
										REA	12.0				
	HBLD	GRID	CED	BW	WW	YW	MILK	ME	HPG	CEM	STAY	MB	YG	CW	REA
EPDs	118	51	8	-2.7	70	109	24	0	14	7	9	0.59	0.13	30	0.10
Top%	29	19	31	29	13	15	25	46	13	12	60	23	91	22	54

• Powerful ratios on this top performer: 95 BR, 112 WR and 109 YR. His dam is a top producing Hughes daughter and a maternal sister to our two lead-off bulls, Lots 1 & 2.

LOT	JEFFRIES SMART CHOICE 209D														
78	01-30-2016 JLJ/209D A-100% AR #3534232														
ANDRAS MR BLACK JEANS R179 ANDRAS JLJ SMART CHOICE R264 ANDRAS KURUBA R194 RED SOO LINE MOMENTUM 7051 JEFFRIES MS DUCHES Z94 BASIN DUCHESS 8120 MPPA: 100.7										Performance					
										BW	76				
										AWW	765				
										7/25 WT	1245				
										7/25 SC	36.0 cm				
										%IMF	4.03				
										REA	13.0				
	HBLD	GRID	CED	BW	WW	YW	MILK	ME	HPG	CEM	STAY	MB	YG	CW	REA
EPDs	68	50	6	-0.6	52	87	27	0	13	4	6	0.71	0.14	22	-0.07
Top%	86	38	41	67	73	57	12	41	32	67	91	12	93	49	86



• Another top Smart Choice son with low birth and great performance, posting a 105 WR and 104 YR.



JEFFRIES RED ANGUS - AGE ADVANTAGED 18 MONTH OLD BULLS



Lots 79-81... these age-advantaged bull will cover more cows!

LOT 79	JEFFRIES SMART CHOICE 247D														
	02-07-2016 JLJ/247D A-100% AR #3615391														
ANDRAS MR BLACK JEANS R179 ANDRAS JLJ SMART CHOICE R264 ANDRAS KURUBA R194 BASIN EXT 8926 JEFFRIES MS LARKABA Z167 BIEBER LARKABA 105U MPPA: 95.6										Performance					
										BW			83		
										AWW			622		
										7/25 WT			1245		
										7/25 SC			36.0 cm		
										%IMF			3.91		
										REA			12.9		
	HBLD	GRID	CED	BW	WW	YW	MILK	ME	HPG	CEM	STAY	MB	YG	CW	REA
EPDs	89	50	6	-0.5	58	99	22	4	12	5	8	0.35	0.08	29	0.11
Top%	66	47	43	69	52	31	44	82	34	45	77	68	79	26	52



• Lot 79 is a long spined, attractive made bull with a great disposition. He stems from the great Larkaba cow that produced perpetual maternal leader, Leachman Solid Gold.



A proud member for over 25 years!

LOT 80	JEFFRIES SMART CHOICE 271D														
	02-12-2016 JLJ/271D A-100% AR #3615413														
ANDRAS MR BLACK JEANS R179 ANDRAS JLJ SMART CHOICE R264 ANDRAS KURUBA R194 SIX MILE WILD WEST 0913W JEFFRIES MS BARBIE Z126 SIX MILE BARBIE 819W MPPA: 103.6										Performance					
										BW		81			
										AWW		732			
										7/25 WT		1175			
										7/25 SC		36.0 cm			
										%IMF		3.71			
										REA		12.9			
	HBLD	GRID	CED	BW	WW	YW	MILK	ME	HPG	CEM	STAY	MB	YG	CW	REA
EPDs	75	48	3	0.4	59	86	24	-6	12	4	8	0.44	0.05	22	0.15
Top%	80	79	78	83	50	59	24	9	35	62	80	48	68	49	44



LOT 81	JEFFRIES EXTEND 268D														
	02-11-2016 JLJ/268D A-100% AR #3615411														
BASIN EXT 5233 LSF RR EXTEND 2313Z LSF RAINDANCE P4063 U8229 RED SIX MILE SAKIC 832S SIX MILE FANNY 837W RED SIX MILE FANNY T 151H MPPA: 94.4										Performance					
										BW				83	
										AWW				697	
										7/25 WT				1255	
										7/25 SC				38.0 cm	
%IMF				3.98											
REA				13.7											
HBLD	GRID	CED	BW	WW	YW	MILK	ME	HPG	CEM	STAY	MB	YG	CW	REA	
EPDs	106	47	5	-1.1	56	80	21	5	10	10	11	0.06	-0.04	16	-0.01
Top%	44	93	54	58	58	71	52	89	78	2	37	96	28	68	77

• Lot 81 is a real chunk... loaded with red meat! Maternal brothers have sold to Liss Ranches in CO, Watson Ranch in OK, and Lloyd Ranch in OK.



JEFFRIES RED ANGUS - AGE ADVANTAGED 18 MONTH OLD BULLS

Lots 82-84... reliable genetics from a reliable source!

LOT 82		JEFFRIES OLY 165D													
		01-17-2016 JLJ/165D A-100% AR #3534211													
RED SSS OLY 554T VGW OLY 903 VGW TM-DORA 0758 RED LONE STONE PURSUIT 81W JEFFRIES MS KAY A509 JEFFRIES MS KAY X712 MPPA: 100.0										Performance					
										BW			68		
										AWW			686		
										7/25 WT			1190		
										7/25 SC			37.0 cm		
%IMF			4.58												
REA			13.1												
HBLD	GRID	CED	BW	WW	YW	MILK	ME	HPG	CEM	STAY	MB	YG	CW	REA	
EPDs	110	51	4	-3.1	64	107	16	0	7	8	11	0.29	-0.02	29	0.28
Top%	38	20	68	23	30	17	89	42	97	11	39	80	36	25	23



• Calving ease Oly son with a 68 BW and -3.1 BW EPD! He posted a 109 IMF ratio too!



LOT		JEFFRIES OLY 273D													
83		02-13-2016 JLJ/273D A-100% AR #3615415													
RED SSS OLY 554T VGW OLY 903 VGW TM-DORA 0758 RED SIX MILE AVIATOR 217P SIX MILE BONNY LASS 318T RED SIX MILE MS UMPIRE 42N MPPA: 101.7										Performance					
										BW		89			
										AWW		632			
										7/25 WT		1250			
										7/25 SC		38.0 cm			
										%IMF		3.80			
										REA		14.7			
	HBLD	GRID	CED	BW	WW	YW	MILK	ME	HPG	CEM	STAY	MB	YG	CW	REA
EPDs	100	49	0	-1.7	48	80	23	4	8	10	11	0.19	-0.04	16	0.01
Top%	51	68	93	47	84	71	34	82	94	2	33	91	28	68	73

• An image of his old man, Lot 83 posted a 14.7in REA with a 106 ratio! A maternal brother sold in the '14 sale to R & G Cattle in Heavner, OK.

LOT		JEFFRIES OUT FRONT 164D																		
84		01-17-2016 JLJ/164D A-100% AR #3534210																		
C-T THE QUEST 1103 5L OUT IN FRONT 1701-457B 5L FIREFLY 3109-1701 C-BAR CONTOUR 107X JEFFRIES MS JENA Z244 BROWN MS BIG SKY U7877 MPPA: 97.4											Performance									
											BW					72				
											AWW					676				
											7/25 WT					1175				
											7/25 SC					36.5 cm				
					%IMF					4.26										
					REA					13.2										
HBLD		GRID	CED	BW	WW	YW	MILK	ME	HPG	CEM	STAY	MB	YG	CW	REA					
EPDs	130	51	6	-1.4	70	107	20	1	11	2	13	0.49	-0.03	31	0.36					
Top%	18	24	48	52	14	16	62	59	53	85	10	38	32	19	15					



• The lone son in the sale sired by the \$100,000 5L Out In Front. We didn't receive semen until late in the breeding season last year, but we will have more sons available next year.



JEFFRIES RED ANGUS - AGE ADVANTAGED 18 MONTH OLD BULLS



Lots 85-87... you can sleep easy during calving season!

LOT		JEFFRIES OUTER LIMIT 216D													
85		01-31-2016 JLJ/216D A-100% AR #3534235													
WHITE OAKS COPPER 873 ANDRAS OUTER LIMIT A032 ANDRAS ROSE 9027 LORENZEN SANTIAM CHEROKEE TJS SPERA S652 LCC SPERA LA173 MPPA: 98.3										Performance					
										BW	60				
										AWW	705				
										7/25 WT	1120				
										7/25 SC	35.5 cm				
										%IMF	4.67				
										REA	13.7				
HBLD	GRID	CED	BW	WW	YW	MILK	ME	HPG	CEM	STAY	MB	YG	CW	REA	
EPDs	87	50	8	-3.9	48	75	31	4	9	3	8	0.57	-0.04	9	0.33
Top%	68	32	27	14	84	79	2	81	83	73	74	25	28	84	18



• This moderate little man started out with only a 60 BW but went on to post a 705 AWW! He also sports a 113 IMF ratio and 107 REA ratio!



LOT		JEFFRIES COWBOY WAY 215D													
86		01-31-2016 JLJ/215D A-100% AR #3534234													
RED LAZY MC COWBOY CUT 26U TJS COWBOY WAY Y423 TJS PRIDE T785 BASIN CHEROKEE 5856 BASIN BONNEBELL 8564 BASIN BONNEBELL 5018 BR MPPA: 103.3										Performance					
										BW	72				
										AWW	714				
										7/25 WT	1245				
										7/25 SC	37.5 cm				
										%IMF	3.86				
										REA	12.8				
HBLD	GRID	CED	BW	WW	YW	MILK	ME	HPG	CEM	STAY	MB	YG	CW	REA	
EPDs	112	49	7	-2.6	55	82	16	1	9	5	11	0.35	-0.02	15	0.28
Top%	36	60	36	31	63	67	89	58	84	47	28	68	36	70	23

• Our Cowboy Way sons are some of the best calving ease bulls we raise every year. This guy has a great spread of 72 BW to a 714 AWW!

LOT		JEFFRIES COWBOY WAY 264D													
87		02-11-2016 JLJ/264D A-100% AR #3615405													
RED LAZY MC COWBOY CUT 26U TJS COWBOY WAY Y423 TJS PRIDE T785 RED SIX MILE PRICELESS 268P SIX MILE WITZEL 533U RED SIX MILE WITZEL 333P MPPA: 90.9										Performance					
										BW	59				
										AWW	663				
										7/25 WT	1105				
										7/25 SC	37.5 cm				
										%IMF	4.10				
										REA	13.5				
HBLD	GRID	CED	BW	WW	YW	MILK	ME	HPG	CEM	STAY	MB	YG	CW	REA	
EPDs	105	47	11	-4.9	37	50	20	-5	9	8	9	0.19	-0.10	-8	0.04
Top%	45	89	9	6	97	98	61	14	82	12	58	91	13	99	67



• A double digit CED bull that will knock your socks off! He is smooth and attractive!



Lots 91 & 92... a pair of Alliance x Basin Lass 8544 ET sisters!

**Lot 91...
posted a
117 IMF
ratio!**



• Wow what a powerful set of bred heifers we have today! Lass C19 and her full sister are right from the heart of our ET program. The dam is a 102.7 MPPA Trend Setter daughter from the Basin program in MT.

• She was pasture bred 3/23-5/16 to Jeffries Gladiator 24C, the exciting Spartacus son selling as Lot 2. She is examined safe and due 1/08/2018.

LOT 91	JEFFRIES LASS C19														
	12/22/2015 JLJ/C19 A-100% AR #3534294														
BECKTON NEBULA P P707 BROWN ALLIANCE X7795 C-BAR & BROWN ABIGRACE T714 BASIN TREND SETTER 6074 BASIN LASS 8544 BASIN LASS 5250 MPPA: 102.7											Performance				
											BW	75			
											AWW	578			
											AYW	806			
											%IMF	5.62			
											REA	9.7			
	HBLD	GRID	CED	BW	WW	YW	MILK	ME	HPG	CEM	STAY	MB	YG	CW	REA
EPDs	133	52	5	-0.8	64	103	20	0	15	4	13	0.80	0.00	30	-0.01
Top%	13	10	51	62	27	21	63	43	7	68	13	5	47	20	79

**Lot 92...
posted a
111 IMF and
116 REA ratios!**



• Lass C27 is a very smooth made female with great genetics! She posted an amazing carcass scan with a 111 IMF ratio and 116 REA ratio.

• She was AI bred on 3/10/17 to Jeffries Reddington 865C. She is examined safe and due 12/18/17.

LOT 92	JEFFRIES LASS C27														
	12/23/2015 JLJ/C27 A-100% AR #3534298														
BECKTON NEBULA P P707 BROWN ALLIANCE X7795 C-BAR & BROWN ABIGRACE T714 BASIN TREND SETTER 6074 BASIN LASS 8544 BASIN LASS 5250 MPPA: 102.7											Performance				
											BW	75			
											AWW	728			
											AYW	896			
											%IMF	5.30			
											REA	11.6			
	HBLD	GRID	CED	BW	WW	YW	MILK	ME	HPG	CEM	STAY	MB	YG	CW	REA
EPDs	133	51	5	-0.8	64	103	20	0	15	4	13	0.75	0.01	30	0.18
Top%	14	13	51	62	27	21	63	43	7	68	13	8	52	20	36

Lots 93 & 94... ET daughters of the popular Andras New Direction!

*Lot 93...
the kind we've
come to expect
from her sire!*



• This dark cherry red, smooth made beauty is a mat. sis to Lots 91 and 92, and her full brothers sell as Lots 11 and 12!

• She was AI bred on 3/10/17 to Jeffries Checotah 817C. Examined safe and due 12/18/17.

LOT 93	JEFFRIES LASS C71														
	12/29/2015 JLJ/C71 A-100% AR #3534318														
ANDRAS IN FOCUS B152 ANDRAS NEW DIRECTION R240 ANDRAS KURUBA B111 BASIN TREND SETTER 6074 BASIN LASS 8544 BASIN LASS 5250 MPPA: 102.7										Performance					
										BW	75				
										AWW	635				
										AYW	857				
										%IMF	4.20				
										REA	7.9				
	HBLD	GRID	CED	BW	WW	YW	MILK	ME	HPG	CEM	STAY	MB	YG	CW	REA
EPDs	62	49	5	-1.6	55	87	25	-4	12	5	5	0.45	0.13	20	-0.2
Top%	88	57	51	46	61	55	21	18	46	37	91	42	92	54	99



• Here is a real sale highlight! Her dam is a top foundation Basin cow that we featured in the sale last year, going to Linthicum Red Angus in OK. A mat. sister is also a donor in our program.

• She was AI bred on 3/10/17 to Jeffries Commander 793C. Examined safe and due 12/18/17.



Lot 94's donor dam, Basin Lakota 8311...

LOT 94	JEFFRIES MS LAKOTA C02														
	12/15/2015 JLJ/C02 A-100% AR #3534282														
ANDRAS IN FOCUS B152 ANDRAS NEW DIRECTION R240 ANDRAS KURUBA B111 BASIN EXT 5233 BASIN LAKOTA 8331 BASIN LAKOTA 3005 MPPA: 102.6										Performance					
										BW		70			
										AWW		639			
										AYW		889			
										%IMF		4.49			
										REA		10.0			
	HBLD	GRID	CED	BW	WW	YW	MILK	ME	HPG	CEM	STAY	MB	YG	CW	REA
EPDs	77	50	7	-2.7	60	99	30	-2	11	9	6	0.45	0.19	25	0.00
Top%	77	34	35	29	43	30	2	30	62	4	90	42	98	37	75

Lots 95 & 96... a pair of ET sisters out from the famed Abigrace tribe!

**Lot 95...
posted a
113 IMF
ratio!**



- The first of two full ET sisters selling, and both are loaded with carcass goodness! A pair of full brothers are selling as Lots 39 and 40.
- She was AI bred on 3/10/17 to Jeffries Commander 793C. She is examined safe and due to calve on 12/18/17.

LOT 95	JEFFRIES MS ABIGRACE C17														
	12/21/2015 JLJ/C17 A-100% AR #3534292														
ANDRAS IN FOCUS B152 ANDRAS NEW DIRECTION R240 ANDRAS KURUBA B111 TR COLT 45 UT806 C-BAR ABIGRACE 257Z C-BAR ABIGRACE U875 MPPA: 105.4										Performance					
										BW		63			
										AWW		544			
										AYW		789			
										%IMF		5.39			
										REA		9.0			
	HBLD	GRID	CED	BW	WW	YW	MILK	ME	HPG	CEM	STAY	MB	YG	CW	REA
EPDs	69	51	5	-2.0	63	105	24	-4	13	7	5	0.62	0.15	30	-0.18
Top%	84	15	56	39	33	18	22	19	21	18	93	17	96	21	97

**Lot 96...
posted a
124 IMF
ratio!**



- Another full ET sister, and boy is this pair of heifers loaded with carcass quality! Their dam, Abigrace 257Z, was purchased from C-Bar in KS, and raised a 115 WR Eldorado daughter that is also in our ET program.

- She was AI bred on 3/10/17 to Jeffries Checotah 817C and due to calve 12/18/17.

LOT 96	JEFFRIES MS ABIGRACE C34														
	12/24/2015 JLJ/C34 A-100% AR #3534302														
ANDRAS IN FOCUS B152 ANDRAS NEW DIRECTION R240 ANDRAS KURUBA B111 TR COLT 45 UT806 C-BAR ABIGRACE 257Z C-BAR ABIGRACE U875 MPPA: 105.4											Performance				
											BW	72			
											AWW	588			
											AYW	820			
											%IMF	5.95			
											REA	10.1			
	HBLD	GRID	CED	BW	WW	YW	MILK	ME	HPG	CEM	STAY	MB	YG	CW	REA
EPDs	71	52	5	-2.0	63	105	24	-4	13	7	5	0.71	0.10	30	-0.06
Top%	82	9	56	39	33	18	22	19	21	18	93	9	85	21	87

Lots 97-99... more bred heifers from the heart of our ET program!

LOT 97	JEFFRIES MS CHATEAU C12														
	12/20/2015 JLJ/C12 A-100% AR #3534289														
ANDRAS MR BLACK JEANS R179 ANDRAS JLJ SMART CHOICE R264 ANDRAS KURUBA R194 GLACIER CHATEAU 744 MS CHATEAU ADVANCE 4L 406P 4L MS ADVANCER R26L MPPA: 104.7										Performance					
										BW		68			
										AWW		679			
										AYW		832			
										%IMF		3.55			
										REA		9.2			
HBLD	GRID	CED	BW	WW	YW	MILK	ME	HPG	CEM	STAY	MB	YG	CW	REA	
EPDs	66	49	4	-0.7	62	102	26	10	11	5	6	0.11	-0.01	30	0.01
Top%	85	57	60	62	37	24	12	99	60	36	89	95	42	23	73



• A very nice made Smart Choice daughter out of 406P, the foundation Chateau daughter from the VonForell's in WY. She was AI bred on 3/09/17 to Jeffries Checotah 817C, the popular young ABS sire. Examined safe and due 12/17/17.



LOT 98		JEFFRIES PRISCILLA C56													
		12/27/2015 JLJ/C56 2-100% AR(W/N) #3534313													
BECKTON NEBULA P P707 BROWN ALLIANCE X7795 C-BAR & BROWN ABIGRACE T714 RED BRYLOR NEW TREND 22 RED BRYLOR PRISCILLA 304S RED WIL-SEL PRISCILLA R. 21K MPPA: 100.0												Performance			
												BW	77		
												AWW	753		
												AYW	903		
												%IMF	6.13		
REA	11.0														
HBLD	GRID	CED	BW	WW	YW	MILK	ME	HPG	CEM	STAY	MB	YG	CW	REA	
EPDs	122	51	-1	1.4	70	113	16	-3	16	2	13	0.75	0.16	39	0.12
Top%	22	23	95	92	13	9	87	23	5	88	9	8	97	6	48

• Priscilla C56 is a powerful ET Alliance daughter out of our 304S cow from Canada. She posted an amazing carcass scan with a 128 IMF ratio and 110 REA ratio! She was AI bred on 3/9/17 to Jeffries Commander 793C and due 12/17/17.

LOT		JEFFRIES MS KAY C65														
99		12/28/2015 JLJ/C65 A-100% AR #3534315														
BIEBER ROOSEVELT W384 BIEBER ROLLIN DEEP Y118 BIEBER TILLY 399W BASIN EXT 8926 JEFFRIES MS KAY X712 JEFFRIES N319-U531 MPPA: 103.4											Performance					
											BW					88
											AWW					457
											AYW					709
											%IMF					4.34
REA					7.9											
HBLD	GRID	CED	BW	WW	YW	MILK	ME	HPG	CEM	STAY	MB	YG	CW	REA		
EPDs	115	51	5	-0.9	70	112	24	1	16	2	11	0.38	0.00	35	0.01	
Top%	29	23	47	58	13	10	27	60	4	83	36	59	46	11	73	



• Ms Kay C65 is the lone Rollin Deep daughter in the sale, out of our young donor, X712, by EXT 8926. She was AI bred on 3/09/17 to Jeffries Reddington 865C. She is examined safe and due 12/17/17.

Lots 100-103... heifers out of heifers, our most advanced genetics!

LOT	JEFFRIES MS ROSELLA C14														
100	12/21/2015 JLJ/C14 A-100% AR #3534290														
BECKTON JULIAN GG B571 HXC CONQUEST 4405P HXC ELLIE MAY MA638 TJS COWBOY WAY Y423 JEFFRIES MS ROSELLA A466 JEFFRIES MS ROSELLA Y845 MPPA: 104.0										Performance					
										BW	62				
										AWW	657				
										AYW	839				
										%IMF	3.74				
										REA	9.0				
	HBLD	GRID	CED	BW	WW	YW	MILK	ME	HPG	CEM	STAY	MB	YG	CW	REA
EPDs	127	49	10	-4.5	57	87	22	-2	11	5	12	0.13	0.03	15	0.15
Top%	18	57	15	8	56	56	42	29	63	41	17	94	57	69	42



• Ms Rosella C14 might be the best heifer in the offering with her awesome body and substance. She was AI bred on 3/10/17 to Jeffries Commander 793C, and is examined safe and due on 12/18/17.



LOT	JEFFRIES MS CHRISTINE C25														
101	12/23/2015 JLJ/C25 A-100% AR #3534297														
ANDRAS IN FOCUS B152 ANDRAS NEW DIRECTION R240 ANDRAS KURUBA B111 VGW OLY 903 JEFFRIES MS CHRISTINE A443 JEFFRIES MS CHRISTINE Z124 MPPA: 101.1										Performance					
										BW	64				
										AWW	623				
										AYW	806				
										%IMF	6.83				
										REA	9.3				
	HBLD	GRID	CED	BW	WW	YW	MILK	ME	HPG	CEM	STAY	MB	YG	CW	REA
EPDs	73	52	3	-2.6	56	93	25	-5	11	7	6	0.84	0.08	22	0.06
Top%	80	9	70	30	60	43	18	14	63	16	89	4	79	47	64

• Unreal 6.83 IMF with a 153 ratio, Ms Christine C25 also posted a 106 REA ratio! She was AI bred on 3/10/17 to Jeffries Checo-tah 817C, the exciting young sire at ABS. She is examined safe and due 12/18/17.

LOT	JEFFRIES MS FLOWER C43														
102	12/25/2015 JLJ/C43 A-100% AR #3534305														
BECKTON JULIAN GG B571 HXC CONQUEST 4405P HXC ELLIE MAY MA638 RED SIX MILE INTRIGUE 348X JEFFRIES MS FLOWER A302 RED KBJ FLOWER 1062 MPPA: 102.0										Performance					
										BW	67				
										AWW	633				
										AYW	869				
										%IMF	5.59				
										REA	10.9				
	HBLD	GRID	CED	BW	WW	YW	MILK	ME	HPG	CEM	STAY	MB	YG	CW	REA
EPDs	83	52	8	-1.8	66	112	15	-4	12	5	6	0.54	0.05	34	0.25
Top%	70	10	28	42	22	10	90	19	34	52	90	26	71	12	26



• Don't miss this tank! Ms Flower C43 is a carcass machine, posting an incredible 125 IMF ratio and 125 REA ratio! She was AI bred on 3/10/17 to Jeffries Reddington 865C and examined safe, due 12/18/17.

JEFFRIES RED ANGUS - REGISTERED BRED HEIFERS

Lots 103-105... enjoy their genetic lead-time!

LOT 103	JEFFRIES PRIMROSE D98														
	1/2/2016 JLJ/D98 A-100% AR #3534383														
ANDRAS IN FOCUS B152 ANDRAS NEW DIRECTION R240 ANDRAS KURUBA B111 RED FINE LINE MULBERRY 26P BASIN PRIMROSE 8216 BASIN PRIMROSE 2893 MPPA: 104.1										Performance					
										BW				78	
										AWW				670	
										AYW				948	
										%IMF				6.45	
REA				10.4											
HBLD	GRID	CED	BW	WW	YW	MILK	ME	HPG	CEM	STAY	MB	YG	CW	REA	
EPDs	99	52	6	-1.2	67	117	24	-2	14	9	7	0.81	0.34	38	0.19
Top%	50	9	45	53	19	6	25	28	13	4	84	5	99	7	34



• The natural calf out of our 104 MPPA ET donor cow, Primrose 8216. She posted one of the best ultrasound scans with a 147 IMF ratio and a 110 REA ratio! She was AI bred on 3/10/17 to Jeffries Checotah 817C and due 12/18/17.



LOT	JEFFRIES MS DAY D141														
104	1/9/2016 JLJ/D141 A-100% AR #3534339														
VGW JUSTICE 614 FRITZ JUSTICE 8013 FRITZ CHRIS 6047 BIEBER H HUGHES W109 JEFFRIES MS DAY Z223 MS ADVANCER OF 4L R28P MPPA: 99.3										Performance					
										BW		83			
										AWW		624			
										AYW		924			
										%IMF		4.45			
										REA		9.0			
	HBLD	GRID	CED	BW	WW	YW	MILK	ME	HPG	CEM	STAY	MB	YG	CW	REA
EPDs	114	50	3	2.0	81	127	22	2	9	9	11	0.51	0.15	49	0.20
Top%	30	33	71	96	1	1	40	64	82	6	29	32	95	1	34

• Ms Day D141 ranks in the elite top 1% of the breed for WW, YW and CW! She was AI bred on 3/10/17 to Jeffries American Brew 533B, the Oly son that topped our '15 bull sale. She is examined safe and due 12/18/17.

LOT 105		JEFFRIES DUCHESS D176													
		1/22/2016 JLJ/D176 A-100% AR #3534352													
RED LAZY MC COWBOY CUT 26U TJS COWBOY WAY Y423 TJS PRIDE T785 BASIN SALUTE R060 BASIN DUCHESS 8120 BASIN DUCHESS 1412 MPPA: 104.0												Performance			
												BW		72	
												AWW		610	
												AYW		875	
												%IMF		4.13	
												REA		9.6	
HBLD		GRID	CED	BW	WW	YW	MILK	ME	HPG	CEM	STAY	MB	YG	CW	REA
EPDs	86	48	5	0.1	46	82	23	2	11	6	9	0.26	-0.02	20	0.25
Top%	67	66	46	78	87	66	33	61	66	28	69	84	34	53	26



• Duchess D176 is a long and deep made, dark cherry red daughter of Cowboy Way and out of a Basin foundation dam. She was AI bred on 3/10/17 to Jeffries Reddington 865C, and due 12/18/17.

Lots 106-108... big record heifers out of top MPPA dams!

LOT	JEFFRIES MS KAY D177															
106	1/22/2016 JLJ/D177 A-100% AR #3534353															
TR COLT 45 UT806 JEFFRIES PISTOLERO 255Z LGS ABBY 689S BASIN EXT 8926 JEFFRIES MS KAY X712 JEFFRIES N319-U531 MPPA: 103.4										Performance						
										BW	70					
										AWW	725					
										AYW	955					
										%IMF	4.58					
										REA	9.5					
HBLD	GRID	CED	BW	WW	YW	MILK	ME	HPG	CEM	STAY	MB	YG	CW	REA		
EPDs	129	52	7	-2.5	73	122	21	3	14	4	11	0.43	0.01	39	0.24	
Top%	16	6	33	32	7	3	54	71	12	65	28	47	52	6	26	



• Positive ratios across the board: 97 BR, 107 WR, 108 YR, 104 IMF and 101 REA! She was AI bred 3/10/17 to Jeffries American Brew 533B, the Oly son that topped our '15 sale. She examined safe and due 12/18/2017.



LOT	JEFFRIES VERNICE D185															
107	1/24/2016 JLJ/D185 A-100% AR #3534356															
RED LAZY MC COWBOY CUT 26U TJS COWBOY WAY Y423 TJS PRIDE T785 LCOC HIGH NOON A093R BIEBER VERNICE 151U OLC VERNICE K861 MPPA: 104.0										Performance						
										BW	72					
										AWW	740					
										AYW	1026					
										%IMF	3.92					
										REA	11.1					
HBLD	GRID	CED	BW	WW	YW	MILK	ME	HPG	CEM	STAY	MB	YG	CW	REA		
EPDs	105	50	2	0.7	73	115	20	5	9	5	11	0.35	-0.10	39	0.60	
Top%	41	29	80	86	7	7	59	91	82	37	30	69	13	6	2	

• Vernice D185 is one of our top performers, posting a 109 WR, 109 YR and a huge 11.1 REA with a 117 ratio! She was pasture bred 3/23-5/16 to Jeffries Gladiator 24C, the herdbull prospect featured as Lot 2. She is examined safe and due 2/22/18

LOT	JEFFRIES DUCHESS D189															
108	1/25/2016 JLJ/D189 A-100% AR #3534357															
RED SSS OLY 554T VGW OLY 903 VGW TM-DORA 0758 RED HIPS EL GRANDE 9R RED KBJ DUCHESS 1025T RED ASPEN DUCHESS 38N MPPA: 104.9										Performance						
										BW	74					
										AWW	689					
										AYW	942					
										%IMF	4.34					
										REA	9.9					
HBLD	GRID	CED	BW	WW	YW	MILK	ME	HPG	CEM	STAY	MB	YG	CW	REA		
EPDs	89	51	2	-2.9	62	106	24	0	7	6	9	0.37	0.03	29	0.15	
Top%	64	14	84	24	37	17	25	43	99	26	64	61	24	42		



• Another top ratio heifer, this fancy Oly daughter has a record of 107 WR, 106 YR, 101 IMF and 100 REA. She was AI bred on 3/10/17 to Jeffries Reddington 865C. She is examined safe and due 12/18/17.

Lots 109 & 110... its obvious these are replacement quality heifers!

**Lot 109... posted
an impressive
802 AWW &
118 WR!**



- Larkisa D211 was the #1 performing heifer in her contemporary group, posting an amazing 802 AWW, 118 WR, 1019 AYW and 115 YR!
- She was pasture bred 3/23-5/16 to Jeffries Rollin Deep 136D, the herd bull prospect featured as Lot 4. She is examined safe and due 1/08/2018.

LOT		JEFFRIES LARKISA D211													
109		1/30/2016 JLJ/D211 A-100% AR #3534368													
BASIN EXT 5233 LSF RR EXTEND 2313Z LSF RAINDANCE P4063 U8229 RED SIX MILE SAKIC 832S SIX MILE LARKISA 707W RED SIX MILE LARKISA 46G MPPA: 100.0											Performance				
											BW	72			
											AWW	802			
											AYW	1019			
											%IMF	3.32			
											REA	8.8			
	HBLD	GRID	CED	BW	WW	YW	MILK	ME	HPG	CEM	STAY	MB	YG	CW	REA
EPDs	113	47	4	-0.3	77	112	19	8	8	10	12	-0.11	0.04	36	-0.09
Top%	31	86	58	69	4	9	67	98	92	2	23	99	66	10	91

**Lot 110... she is
the queen of
the carcass
show!**



- Ms Lady D220 is an easy doing tank! She posted an amazing carcass ultrasound scan with a 116 IMF ratio and a 112 REA ratio!
- She was pasture bred 3/23-5/16 to Jeffries Rollin Deep 136D, the herd bull prospect featured as Lot 4. She is examined safe and due 1/08/2018.

LOT 110		JEFFRIES MS LADY D220														
		2/1/2016 JLJ/D220 A-100% AR #3534373														
BIEBER ROUSE SAMURAI X22 BIEBER SPARTACUS A193 BIEBER TILLY 233U SIX MILE ITEGRITY 691W JEFFRIES MS LADY Y877 JEFFRIES W588 MPPA: 100.8											Performance					
											BW			67		
											AWW			648		
											AYW			941		
											%IMF			5.08		
REA			10.6													
HBLD		GRID	CED	BW	WW	YW	MILK	ME	HPG	CEM	STAY	MB	YG	CW	REA	
EPDs	122	51	5	-3.5	56	88	23	-2	13	3	12	0.70	0.13	17	0.18	
Top%	21	23	54	17	59	55	32	26	27	73	16	10	94	63	37	

LOT 111

Alfadale Stock Farms, El Reno, OK

8-10 Head of Open Yearling Heifers ready to fall breed!



For information on these heifers contact...

Peter Jeffrey (405) 202-7694

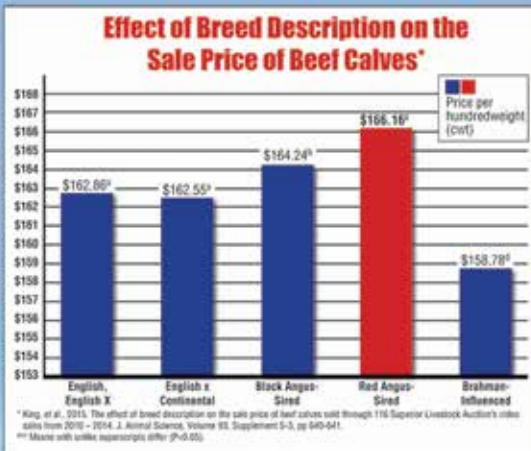
EFFRIES RED ANGUS - THE HOTTEST BREED GOING!

Achieve it!

RETURN ON INVESTMENT

Independent research shows Red Angus-sired calves sold for a higher price than all other breed groups.

Red Angus bulls make a positive difference in your breeding program's bottom line.



Invest in your future today!

Ranch Tested. Rancher Trusted.

Red Angus

RedAngus.org
(940) 387-3502



Red Angus Pro-Cow

Pro-Cow is a tool used by the Red Angus Association of America to identify replacement-quality females. Only females enrolled in the FCCP will be eligible to be labeled as Pro-Cows, therefore ensuring at least 50% Red Angus bloodlines.

How to label females as Pro-Cow:

- Enroll calf crop in the Feeder Calf Certification Program (FCCP).
- Purchase 99-cent Pro-Cow tags or have the Pro-Cow logo imprinted on your FCCP tag.



RedAngus.org • (940) 387-3502



Keep the Tags – Keep the Premiums!

FCCP yellow-tagged calves qualify exclusively for these Red Angus grids:



Choice⁺
Premium Red Angus Grid



G.O. RED
RED ANGUS GRID



Enroll your calves today – Free enrollment and only 99¢ per tag.

Feeder Calf Certification Program

- Traceability to at least 50% Red Angus genetics
- Source verified to ranch of origin
- Group age



Allied Access*

- Source verified to ranch of origin
- Group age



*Not eligible for Choice+ or G.O. Grids

Contact us today and take advantage of these VALUE-ADDED OPTIONS.

Ranch Tested. Feedlot Trusted.

Red Angus

RedAngus.org
(940) 387-3502



Hours:
Mon-Fri 8:00-5:00
Sat 8:00-Noon

GOLDEN
AG INC.

918.473.0335

416917 Hwy. 266
Checotah, OK 74426

At **GOLDEN AG INC.** We possess a broad range of knowledge gained through years in the industry and a passion for helping you succeed. Call or visit us today!
We are located 3 miles west of Checotah on Highway 266

Vermeer®



We are a Full-Service parts provider for Vermeer & have an on-site Vermeer certified technician



We provide services ranging from new and used Vermeer equipment sales to parts, service and support.



Werk Weld troughs are available in many sizes & types



Call for more information & prices for Pearson cattle chutes



WW corrals are durable & easy-to-set-up



They can be set up in several different configurations



PARTS
FOR MANY BRANDS
OF FARM EQUIPMENT

Hydraulic hoses and fittings for many applications.
Custom built to meet your needs.
Give us a call for more information & prices



WWW.GOLDENAGINC.COM

SALE TERMS AND CONDITIONS

Except for those stated in the terms and conditions below, there are no warranties, either expressed or implied, as to the merchantability or fitness for a particular purpose with respect to the cattle being sold at this auction. The warranties and guarantees set forth in the "Terms and Conditions" are in lieu of all other warranties, either expressed or implied, and the remedies provided therein shall be the sole and exclusive remedy for the Buyer, or any party claiming through Buyer, for any breach of warranty or guarantee therein provided, and all other obligations or liabilities.

All cattle in this sale are offered according to the laws of the State wherein the sale is conducted. The right to bid, as provided under law, is reserved for all sellers unless otherwise announced.

1. BIDDING

The Auctioneer in charge will settle any disputes as to bids, and his decision on such matters shall be final.

2. TERMS

Terms of sale are cash unless satisfactory credit arrangements have been made with Sale Management prior to sale.

3. PURCHASER'S RISK

Each animal becomes the risk of the Buyer as soon as sold, but it shall be the obligation of the Seller to see that animals are fed and cared for free of charge to Buyer, until loaded for shipment or until the expiration of 48 hours after the sale, whichever occurs sooner.

4. CERTIFICATE OF REGISTRY

A transferred certificate of registry will be furnished to the Buyer for each animal.

5. HEALTH

All animals are eligible for interstate shipment, except as otherwise announced. Interstate health papers will be furnished for each animal requiring tuberculosis and brucellosis tests in accordance with Federal Regulations.

6. ANNOUNCEMENTS

Any changes from information of any kind in the sale catalog or related materials will be announced from the auction block and such announcements shall take precedence.

7. BREEDING GUARANTEE

The nature and extent of the Breeding Guarantee is set forth in section 10 of the Red Angus Association of America's Sale Terms and Conditions.

8. DEFAULT

In the event the Buyer defaults on payment, the Buyer shall be responsible for all costs, including attorney's costs, incurred by Sale Management or Seller in connection with collecting, or attempting to collect, payment due.

9. SELLER'S SEMEN RIGHTS

The Seller reserves the right to 1/3 semen interest in every bull sold, unless specified differently in the sale catalog. Any semen collected for the Seller will be at their cost and the Buyer's convenience.

10. LIABILITIES

All persons who attend the sale do so at his or her own risk. The Seller, and the Sale Manager assume no liability of accidents that may occur. It is to be clearly understood that the Sale Manager and their representatives act only as a medium between the Buyer and Seller.

11. CONTRACT

The above terms and conditions shall constitute as a contract between the Buyer and Seller for each sale animal and shall be equally binding upon both. Each sale and/or resale of a sale animal constitutes a separate transaction.

Thank You... Please Join Us Again!

JERRY & TRICIA JEFFRIES
419526 E 1070 Road
Checotah, Oklahoma 74426

DATED MATERIAL

***We let our bulls do the walking...
...and our genetics do the talking!***



WWW.JEFFRIESCATTLE.COM